

# CONCERTO

## Flauto

**Allegro Maestoso**

Anónimo

*f*

5

*f*

9

13

*p*

18

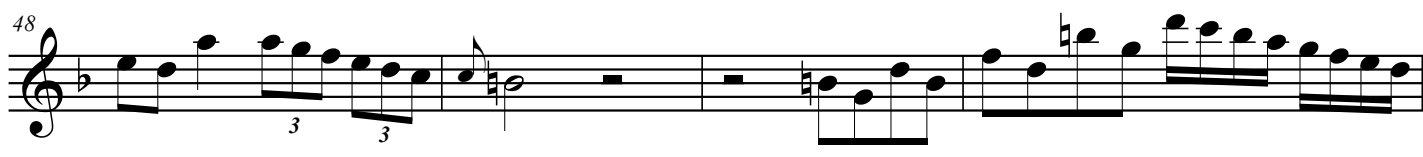
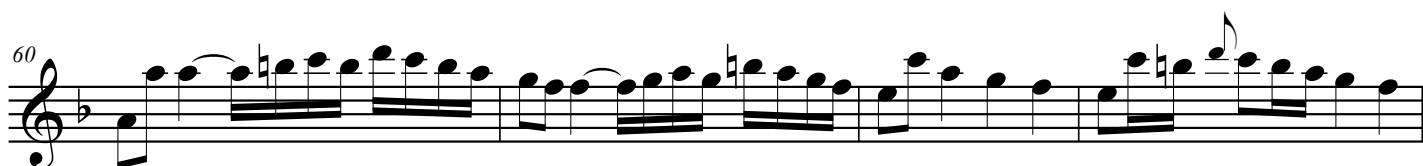
*f*

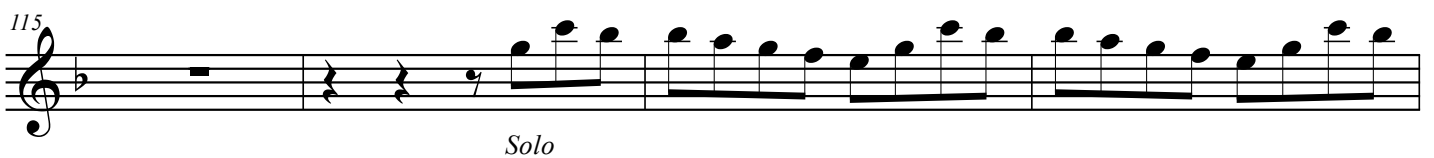
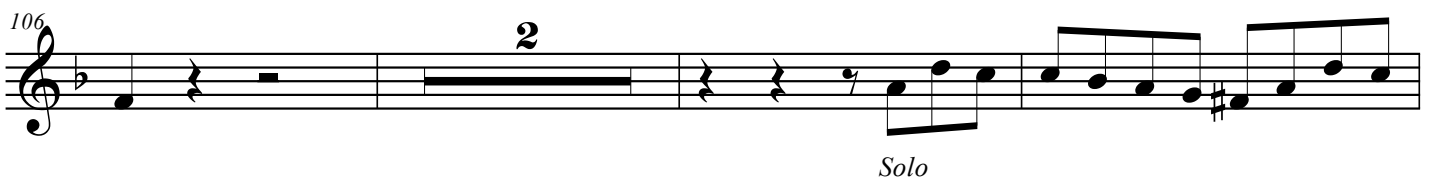
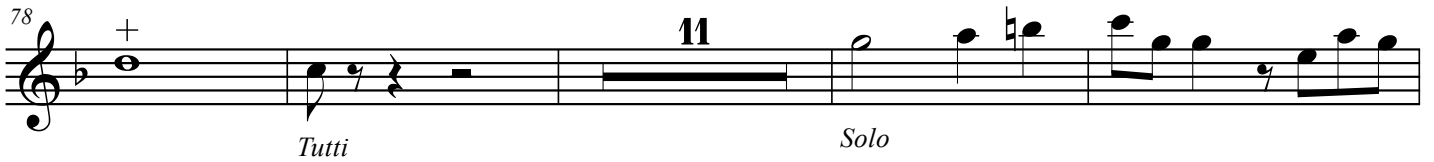
22

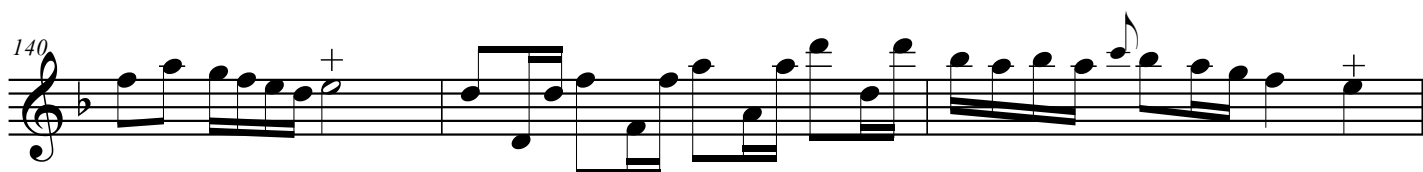
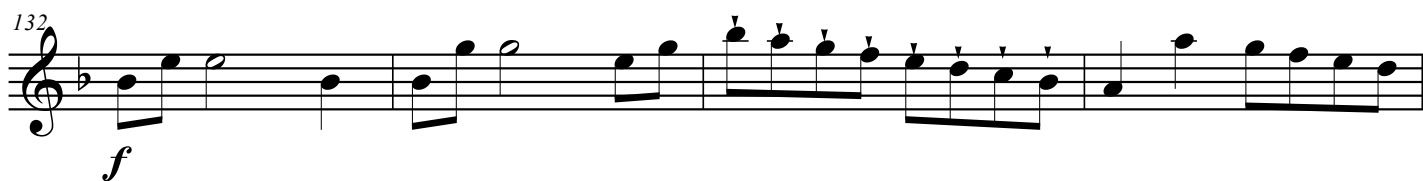
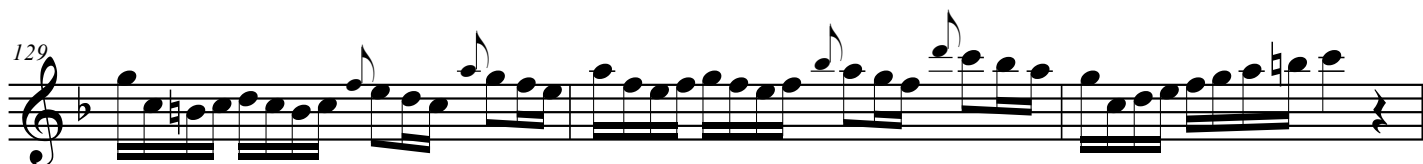
27

30

*Solo*

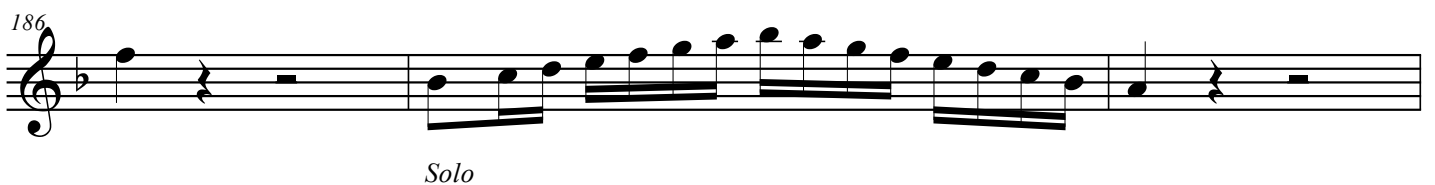
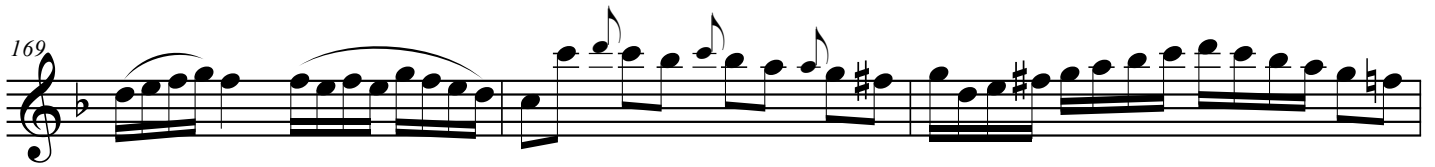
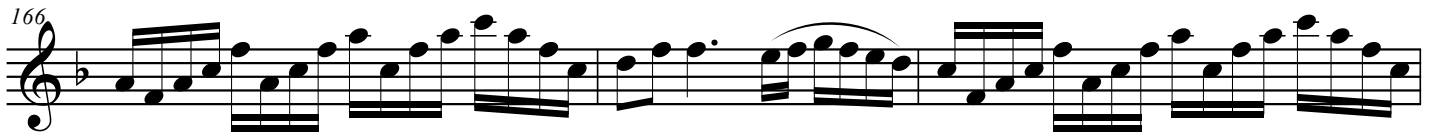
*Solo**Solo**Solo*





*Tutti*





*Tutti*

## II

**Largo**

17

*f*

Solo

2

+

28

Musical notation for measure 28, featuring a treble clef, a key signature of one sharp (F#), and a 3/4 time signature. The melody consists of eighth and sixteenth notes, with some beamed sixteenth notes and a final dotted quarter note.

32 

40

*f*

### III

## Rondó Allegretto

**Rondo Allegretto**



*p*

