

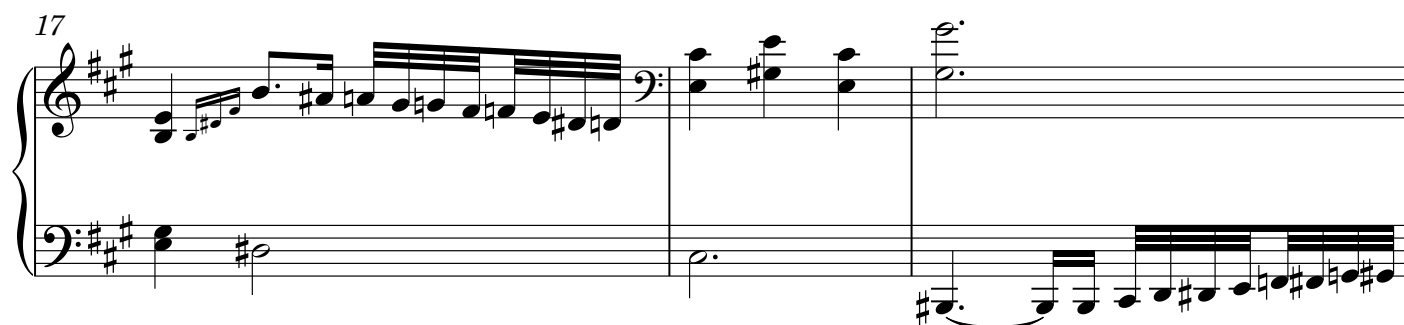
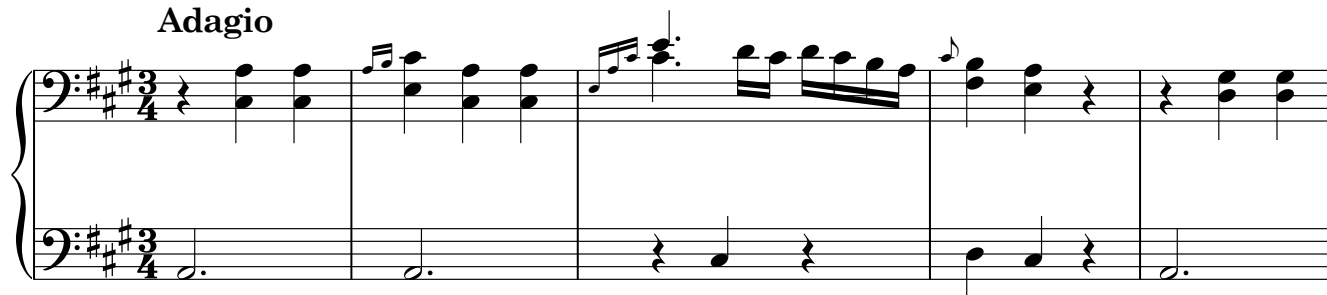
Josephine Aurnhammer

Harpsichord Sonata  
in A major

# Harpsichord Sonata in A major

Josephine Aurnhammer

Adagio



20

Measures 20-23 of a musical score in A major (three sharps). The system consists of two staves. The upper staff begins with a treble clef and a 3/2 time signature. It contains a melodic line with eighth and sixteenth notes, including a triplet of eighth notes in measure 21. The lower staff, in bass clef, provides a harmonic accompaniment with dotted half notes and whole notes.

24

Measures 24-27. The upper staff continues the melodic line with eighth and sixteenth notes. Measure 27 features a half note followed by a quarter note. The lower staff continues with dotted half notes and whole notes.

28

Measures 28-31. The upper staff features a melodic line with eighth and sixteenth notes, including a triplet of eighth notes in measure 28. The lower staff continues with dotted half notes and whole notes.

32

Measures 32-35. Measure 32 includes a trill (tr) over a sixteenth note. The upper staff continues with eighth and sixteenth notes. The lower staff continues with dotted half notes and whole notes.

36

Measures 36-39. The system concludes with a double bar line. The upper staff features a melodic line with eighth and sixteenth notes. The lower staff continues with dotted half notes and whole notes.

40

Measures 40-43 of a musical score in A major (three sharps). The system consists of four measures. Measure 40 begins with a repeat sign. The right hand features a melodic line with eighth and sixteenth notes, while the left hand provides a simple harmonic accompaniment with quarter and half notes.

44

Measures 44-47 of the musical score. Measures 44 and 45 show a more active right hand with sixteenth-note patterns. Measures 46 and 47 feature a descending melodic line in the right hand and sustained chords in the left hand.

48

Measures 48-51 of the musical score. Measure 48 has a melodic phrase in the right hand. Measures 49 and 50 contain complex chordal textures with many beamed notes in both hands. Measure 51 returns to a clearer melodic line in the right hand.

52

Measures 52-54 of the musical score. Measures 52 and 53 are characterized by rapid sixteenth-note runs in the right hand. Measure 54 features a long, sustained half-note chord in the left hand and a melodic phrase in the right hand.

55

Measures 55-57 of the musical score. Measures 55 and 56 contain fast, intricate sixteenth-note passages in the right hand. Measure 57 concludes the system with a melodic phrase in the right hand and a final chord in the left hand.

58

Measures 58-61 of a musical score in A major (three sharps). The treble clef staff features a complex melodic line with many beamed sixteenth and thirty-second notes, including a trill in measure 59. The bass clef staff provides a harmonic accompaniment with eighth and sixteenth notes, including a triplet in measure 60.

62

Measures 62-66 of the musical score. The treble clef staff continues with a melodic line of eighth and sixteenth notes. The bass clef staff features a steady accompaniment of half notes.

67

Measures 67-71 of the musical score. The treble clef staff has a melodic line with eighth and sixteenth notes. The bass clef staff continues with a steady accompaniment of half notes.

72

Measures 72-75 of the musical score. The treble clef staff features a melodic line with eighth and sixteenth notes. The bass clef staff has a steady accompaniment of half notes, with a more active line in measure 75.

76

Measures 76-79 of the musical score. The treble clef staff features a melodic line with eighth and sixteenth notes, including a triplet in measure 77. The bass clef staff has a steady accompaniment of half notes.

80

Tr

This system contains measures 80 through 83. The key signature is three sharps (F#, C#, G#). The melody in the treble clef consists of eighth and quarter notes, with a trill (tr) in measure 82. The bass line features dotted half notes and a half note in measure 83.

84

This system contains measures 84 through 87. The melody in the treble clef continues with eighth and quarter notes, often beamed together. The bass line consists of dotted half notes.

88

Tr

This system contains measures 88 through 91. The melody in the treble clef includes a trill (tr) in measure 88 and ends with a triplet of eighth notes in measure 91. The bass line features dotted half notes and quarter notes.

92

This system contains measures 92 through 95, which conclude the piece. The melody in the treble clef includes a triplet of eighth notes in measure 92 and ends with a double bar line. The bass line consists of quarter and half notes, also ending with a double bar line.

This page left blank  
to facilitate page turns.

## Menuetto 1

Menuetto 1, measures 1-11. The piece is in 3/4 time with a key signature of three sharps (F#, C#, G#). The first system (measures 1-6) features a treble staff with eighth and sixteenth notes and a trill (tr) in measure 2, and a bass staff with a simple harmonic accompaniment. The second system (measures 7-11) includes a triplet (3) in measure 7, a repeat sign in measure 8, and trills (tr) in measures 9 and 11. The third system (measures 12-16) contains a trill (tr) in measure 12, a triplet (3) in measure 14, and ends with a double bar line.

## Menuetto 2

Menuetto 2, measures 1-4. The piece is in 3/4 time with a key signature of three sharps (F#, C#, G#). The first system (measures 1-4) features a treble staff with eighth and sixteenth notes and a bass staff with a simple harmonic accompaniment. The second system (measures 5-8) includes a triplet (3) in measure 5, a repeat sign in measure 6, and ends with a double bar line.



9

Measures 9-12 of a musical piece in A major (three sharps). The melody in the right hand features eighth and sixteenth notes, while the left hand plays a steady eighth-note accompaniment.

13

Menuetto 1 D.C.

Measures 13-16 of the Minuet in D major. Measure 13 includes a triplet of eighth notes in the right hand. Measure 14 features a triplet of eighth notes in the right hand and a triplet of eighth notes in the left hand. Measure 15 contains a trill (tr) on a G note in the right hand. The piece concludes with a repeat sign in measure 16.

Rondo

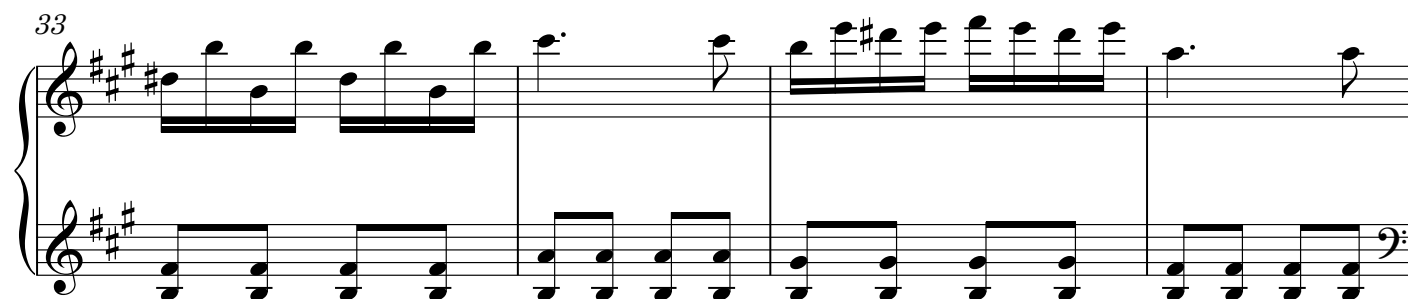
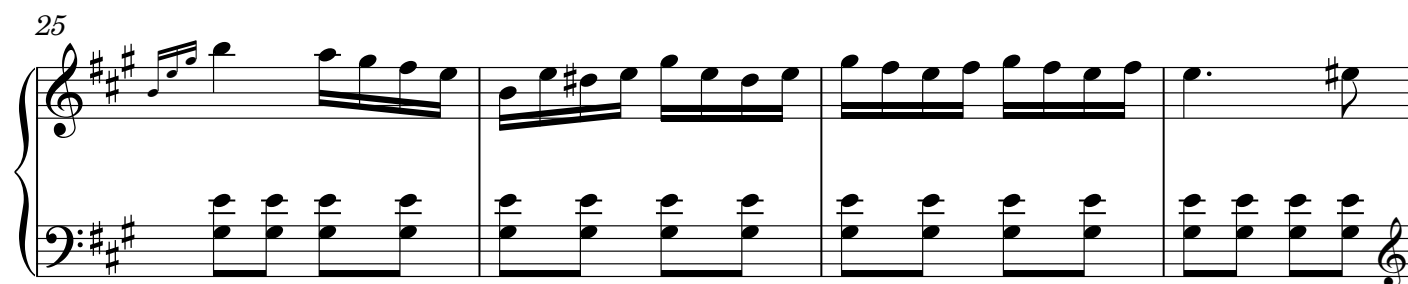
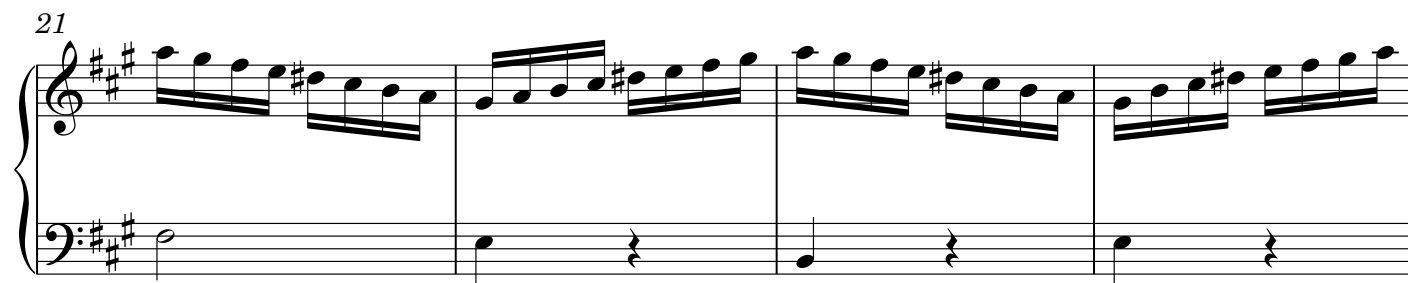
Measures 17-22 of the Rondo in A major, 2/4 time. The melody in the right hand is characterized by eighth-note patterns, and the left hand provides a simple accompaniment of eighth notes.

6

Measures 23-28 of the Rondo. Measure 23 features a triplet of eighth notes in the right hand. The piece continues with eighth-note patterns in both hands.

12

Measures 29-34 of the Rondo. The melody in the right hand consists of eighth-note patterns, and the left hand plays a simple accompaniment. The piece concludes with a repeat sign in measure 34.



37

System 1 (Measures 37-40): Treble clef, key of A major (three sharps). The melody in the treble clef features eighth-note patterns with various accidentals. The bass clef provides a simple accompaniment of quarter notes.

41

System 2 (Measures 41-44): Continuation of the piece. The treble clef melody continues with eighth-note patterns. The bass clef accompaniment remains consistent with quarter notes.

45

System 3 (Measures 45-50): Continuation of the piece. The treble clef melody continues with eighth-note patterns. The bass clef accompaniment remains consistent with quarter notes.

System 4 (Measures 51-55): Continuation of the piece. The treble clef melody continues with eighth-note patterns. The bass clef accompaniment remains consistent with quarter notes.

56

System 5 (Measures 56-61): Continuation of the piece. The treble clef melody continues with eighth-note patterns. The bass clef accompaniment remains consistent with quarter notes. A triplet of eighth notes is marked with a '3' in measure 56.

62

Measures 62-66 of a musical score in A major (three sharps). The treble clef contains eighth and sixteenth note patterns, while the bass clef features a dotted half note followed by quarter notes. A fermata is placed over the first bass note in measure 63.

67

Measures 67-70 of a musical score in A major. The treble clef has a melodic line with a slur over measures 69-70. The bass clef plays a steady eighth-note accompaniment.

71

Measures 71-74 of a musical score in A major. A trill (tr) is marked above the first note of measure 73 in the treble clef. The bass clef continues with eighth-note accompaniment.

75

Measures 75-78 of a musical score in A major. The treble clef features a continuous sixteenth-note pattern. The bass clef has a simple accompaniment of half notes.

79

Measures 79-82 of a musical score in A major. The treble clef continues with a sixteenth-note pattern. The bass clef accompaniment consists of half notes, with a quarter rest in measure 82.

83

Measures 83-87 of a musical score in A major (three sharps). The treble clef staff features a melodic line with eighth and sixteenth notes, including a triplet in measure 84 and a repeat sign in measure 85. The bass clef staff provides a harmonic accompaniment with eighth and sixteenth notes. Measure 87 ends with a double bar line.

88

Measures 88-92 of the musical score. The treble clef staff continues the melodic development with eighth and sixteenth notes. The bass clef staff maintains the accompaniment pattern. Measure 92 ends with a double bar line.

93

Measures 93-97 of the musical score. The treble clef staff shows a more active melodic line with frequent eighth and sixteenth notes. The bass clef staff continues with the accompaniment. Measure 97 ends with a double bar line.

98

Measures 98-101 of the musical score. The treble clef staff features a melodic line with eighth and sixteenth notes. The bass clef staff continues the accompaniment. Measure 101 ends with a double bar line.

102

Measures 102-105 of the musical score. The treble clef staff has a melodic line with eighth and sixteenth notes. The bass clef staff continues the accompaniment. Measure 105 ends with a double bar line.

105

Measures 105-109. Treble clef, key of D major (F# and C#). Measure 105: Treble has eighth notes D5, E5, F#5, G5; Bass has quarter notes D4, F#4. Measure 106: Treble has quarter notes G5, F#5, E5, D5; Bass has quarter notes D4, F#4. Measure 107: Treble has eighth notes D5, E5, F#5, G5, A5, G5, F#5, E5; Bass has quarter notes D4, F#4. Measure 108: Treble has eighth notes D5, E5, F#5, G5, A5, G5, F#5, E5; Bass has quarter notes D4, F#4. Measure 109: Treble has quarter notes D5, E5, F#5, G5; Bass has quarter notes D4, F#4.

110

Measures 110-114. Treble clef, key of D major. Measure 110: Treble has eighth notes D5, E5, F#5, G5, A5, G5, F#5, E5; Bass has quarter notes D4, F#4. Measure 111: Treble has quarter notes G5, F#5, E5, D5; Bass has quarter notes D4, F#4. Measure 112: Treble has quarter notes D5, E5, F#5, G5; Bass has quarter notes D4, F#4. Measure 113: Treble has quarter notes G5, F#5, E5, D5; Bass has quarter notes D4, F#4. Measure 114: Treble has quarter notes D5, E5, F#5, G5; Bass has quarter notes D4, F#4.

115

Measures 115-120. Treble clef, key of D major. Measure 115: Treble has eighth notes D5, E5, F#5, G5, A5, G5, F#5, E5; Bass has quarter notes D4, F#4. Measure 116: Treble has eighth notes D5, E5, F#5, G5, A5, G5, F#5, E5; Bass has quarter notes D4, F#4. Measure 117: Treble has eighth notes D5, E5, F#5, G5, A5, G5, F#5, E5; Bass has quarter notes D4, F#4. Measure 118: Treble has eighth notes D5, E5, F#5, G5, A5, G5, F#5, E5; Bass has quarter notes D4, F#4. Measure 119: Treble has eighth notes D5, E5, F#5, G5, A5, G5, F#5, E5; Bass has quarter notes D4, F#4. Measure 120: Treble has quarter notes D5, E5, F#5, G5; Bass has quarter notes D4, F#4.

121

Measures 121-124. Treble clef, key of D major. Measure 121: Treble has quarter notes D5, E5, F#5, G5; Bass has quarter notes D4, F#4. Measure 122: Treble has quarter notes G5, F#5, E5, D5; Bass has quarter notes D4, F#4. Measure 123: Treble has quarter notes D5, E5, F#5, G5; Bass has quarter notes D4, F#4. Measure 124: Treble has quarter notes G5, F#5, E5, D5; Bass has quarter notes D4, F#4.

125

Measures 125-128. Treble clef, key of D major. Measure 125: Treble has quarter notes D5, E5, F#5, G5; Bass has quarter notes D4, F#4. Measure 126: Treble has quarter notes G5, F#5, E5, D5; Bass has quarter notes D4, F#4. Measure 127: Treble has quarter notes D5, E5, F#5, G5; Bass has quarter notes D4, F#4. Measure 128: Treble has quarter notes G5, F#5, E5, D5; Bass has quarter notes D4, F#4.

129

Measures 129-132. Treble clef: eighth-note patterns. Bass clef: dotted half notes and quarter notes.

133

Measures 133-136. Treble clef: eighth-note patterns and a trill (tr). Bass clef: quarter notes.

137

Measures 137-140. Treble clef: eighth-note patterns and quarter notes. Bass clef: eighth-note patterns and quarter notes.

141

Measures 141-144. Treble clef: a long note and eighth-note patterns. Bass clef: eighth-note patterns and a long note.

145

Measures 145-148. Treble clef: a trill (tr) and a long note. Bass clef: eighth-note patterns and a long note.

