

CONCIERTO EN DO MENOR

RV 118

Antonio Vivaldi

Allegro

I

f

4

8

tr *p* *f*

12

A

15

p *f*

19

22

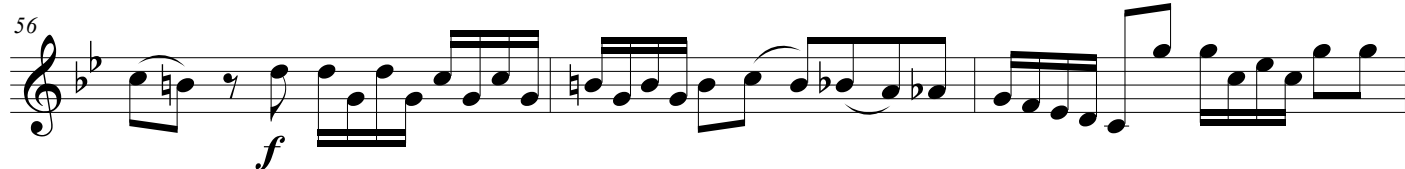
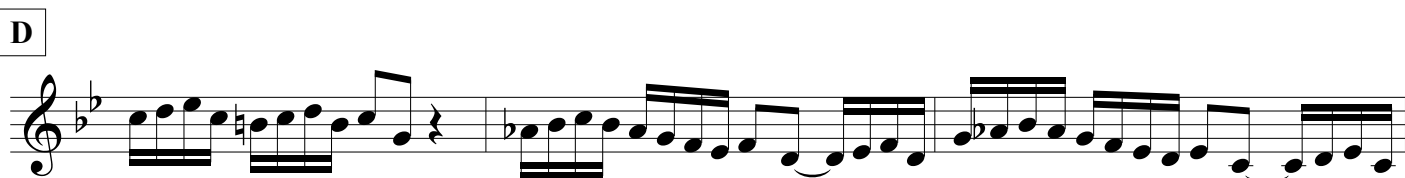
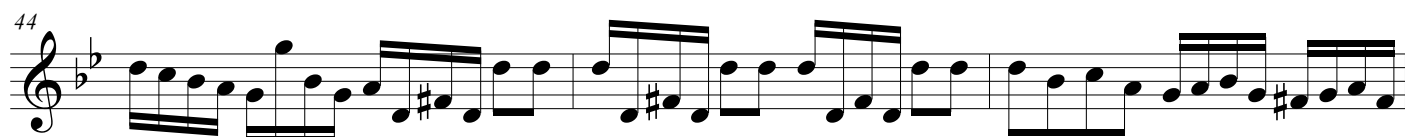
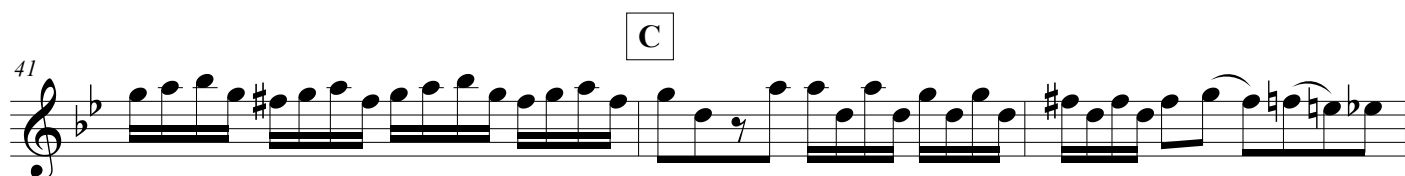
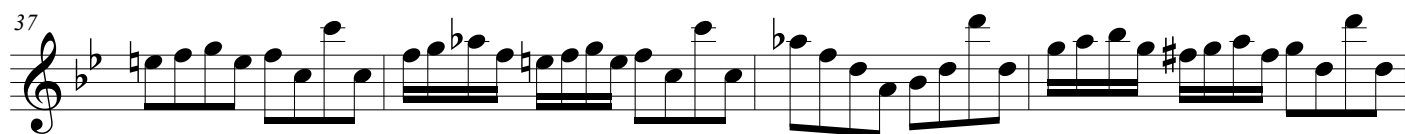
p *f*

B

26

29

tr *p*



Largo

II

E *f* *p* **F** *simile* *p* *simile*

16 25

III

Allegro

f *p* **G** *p* *p* **H** *p* *f*

10 19 26 35 43 52

59

66

I

74

81

p

88

J

f

96

105

Detailed description: This image shows a page of a musical score for a concerto in D minor. The page is numbered 4 at the top. The score is written for a single melodic line on a treble clef staff. The key signature has two flats (B-flat and E-flat). The music is divided into measures, with measure numbers 59, 66, 74, 81, 88, 96, and 105 marked at the beginning of their respective lines. The notation includes various rhythmic values, including eighth and sixteenth notes, and rests. There are two section markers, 'I' and 'J', enclosed in boxes. Dynamic markings include 'p' (piano) at measure 81 and 'f' (forte) at measure 88. The score ends with a double bar line at measure 105.