

Violon II

Concerto H.420 - Allegro

C.P.E. BACH

The musical score for Violon II, Concerto H.420 by C.P.E. Bach, is written in 3/4 time and the key of D major. The piece is marked Allegro. The score consists of 32 measures, organized into eight staves. The first staff begins with a forte (*f*) dynamic. The second staff includes a triplet of eighth notes. The third staff starts with a piano (*p*) dynamic. The fourth staff returns to forte (*f*). The fifth staff continues the forte passage. The sixth staff introduces a mezzo-forte (*mf*) dynamic followed by a piano (*p*) section. The seventh staff returns to forte (*f*). The eighth staff concludes the piece with a final chord.

4

8

14

18

22

27

32

f

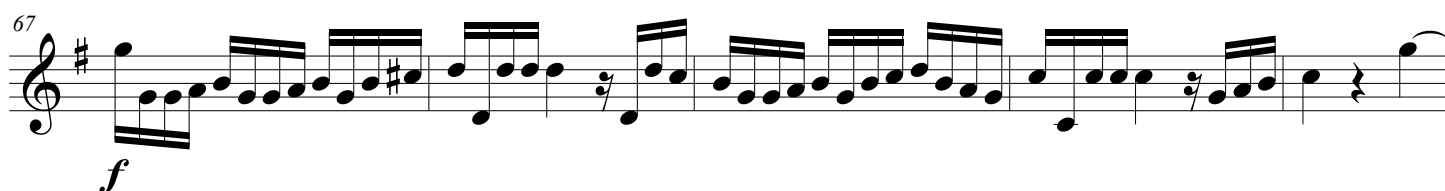
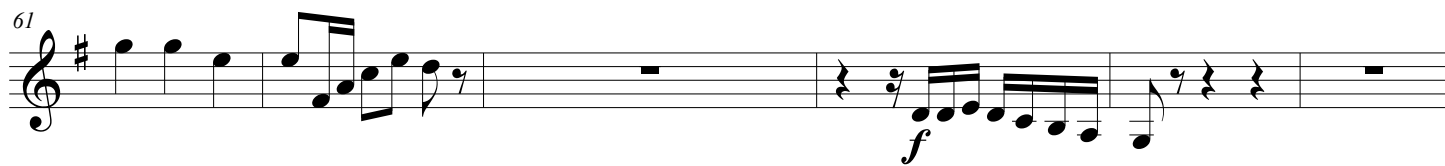
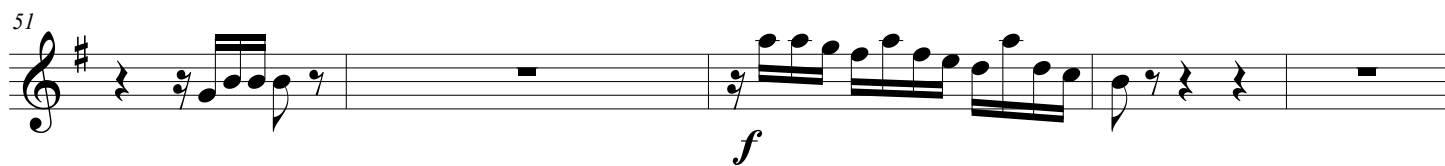
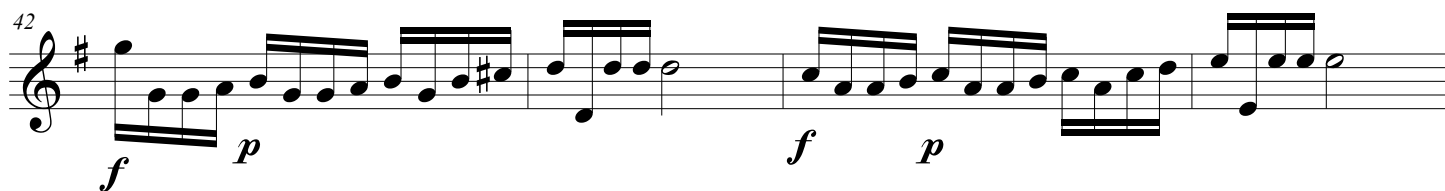
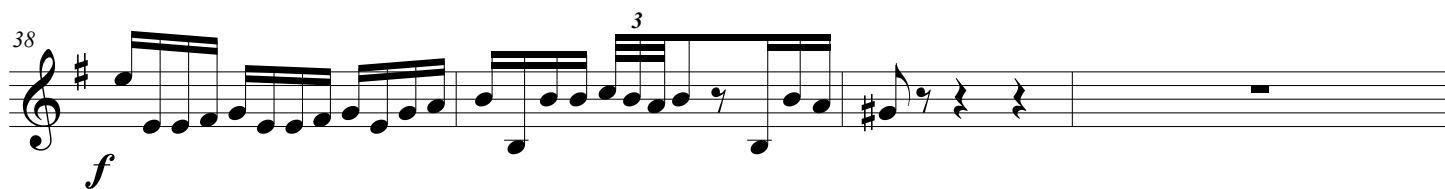
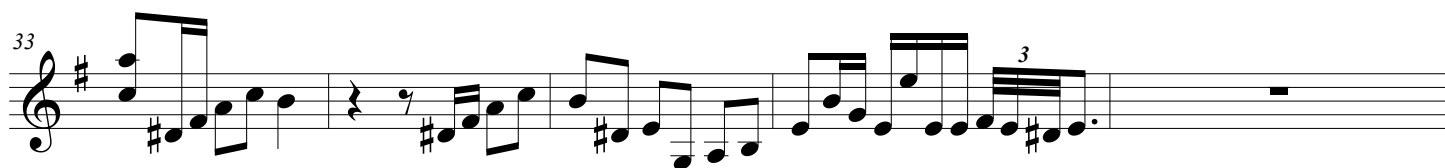
p

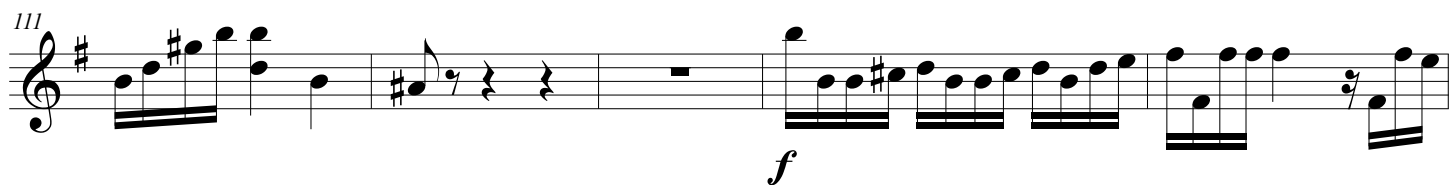
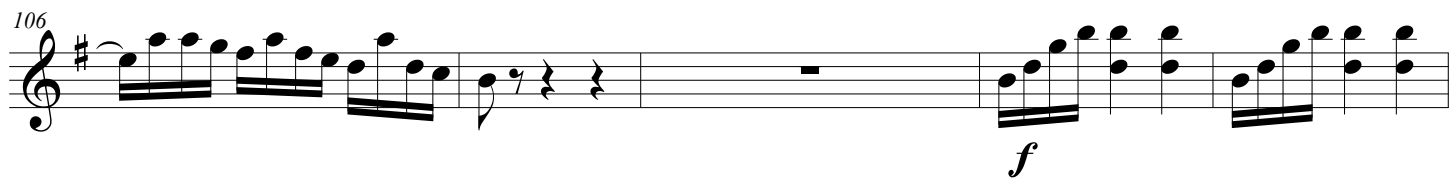
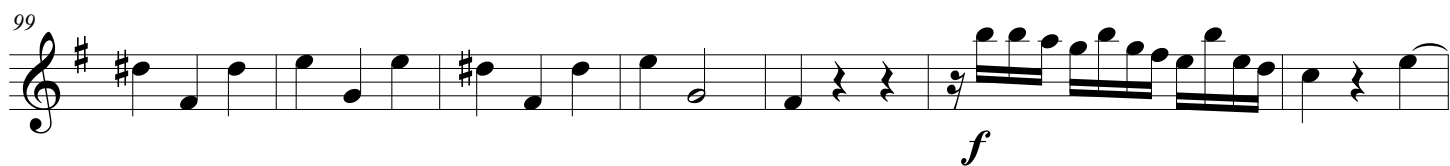
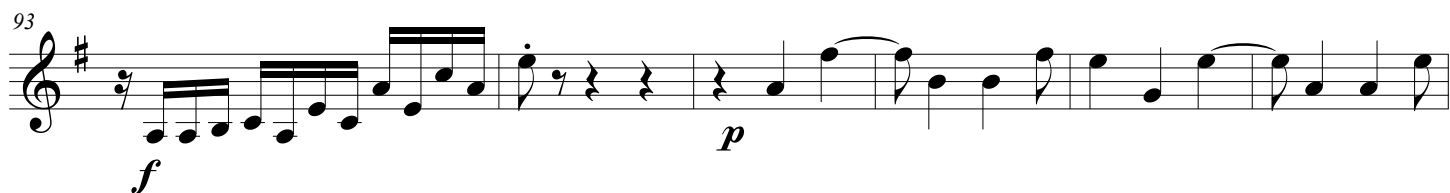
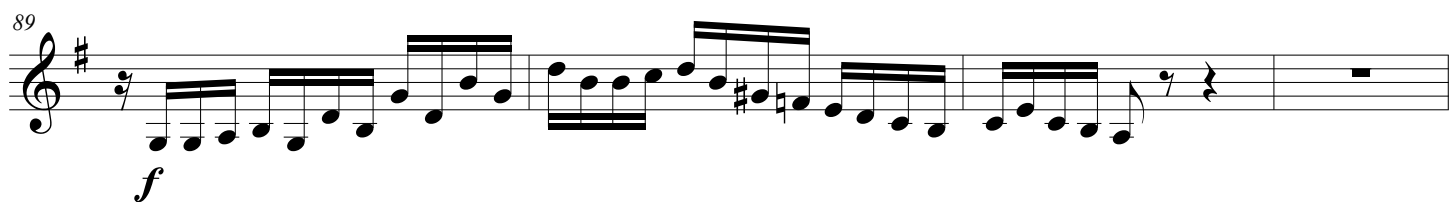
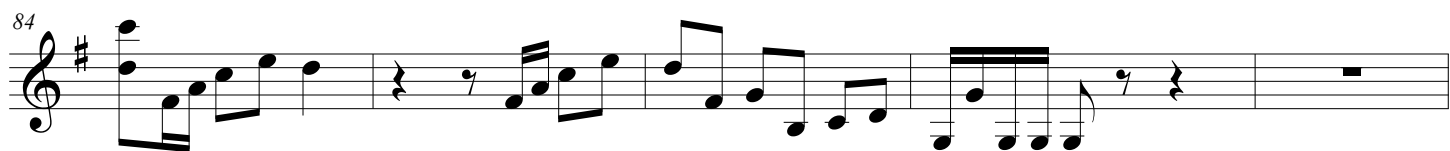
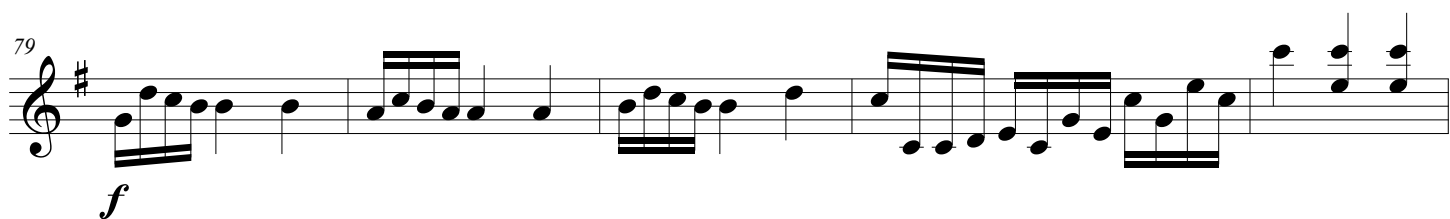
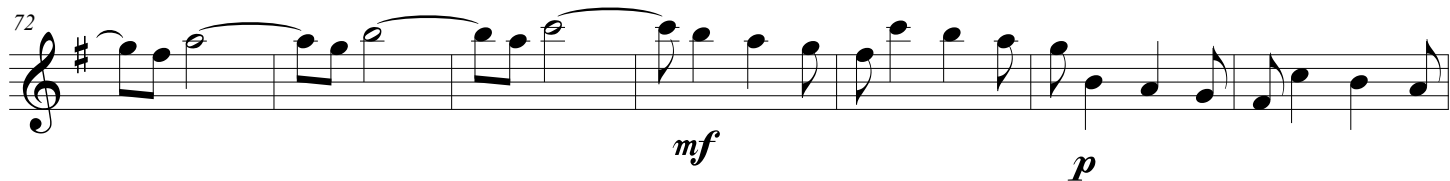
f

mf

p

f





116

p

123

f

127

p

131

p

135

p

140

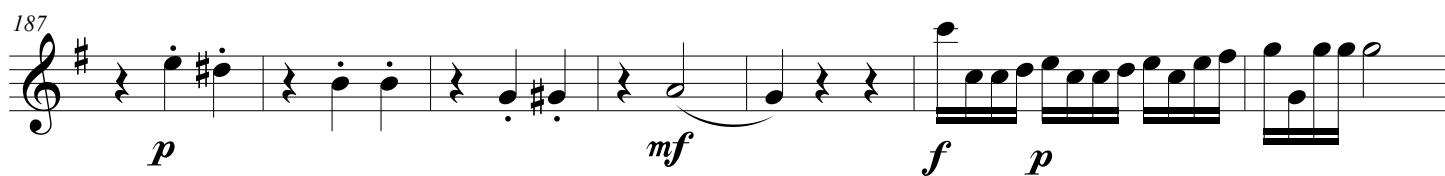
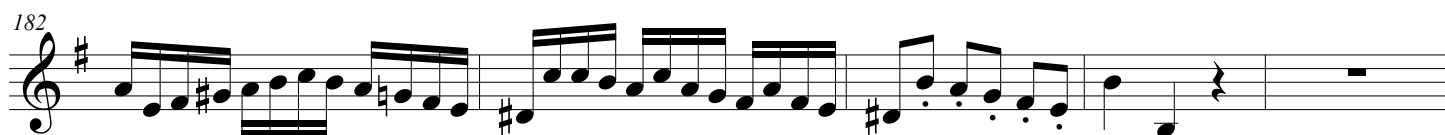
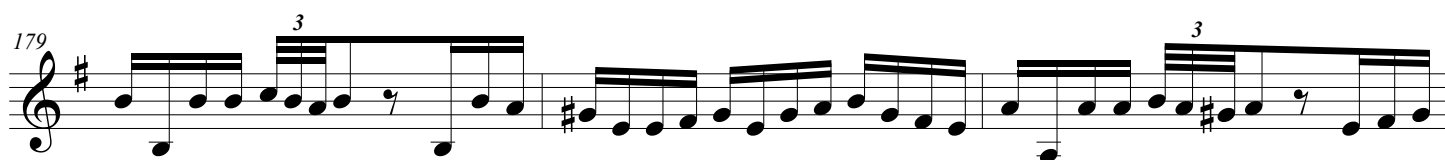
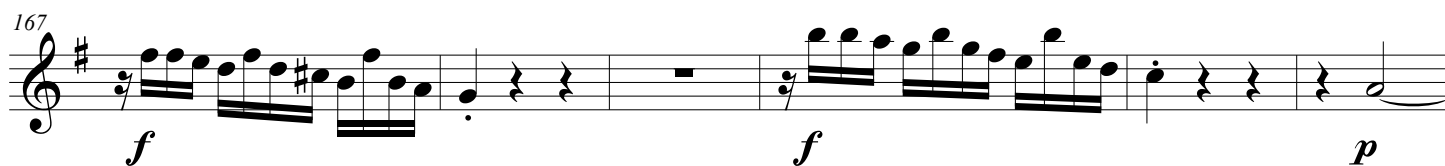
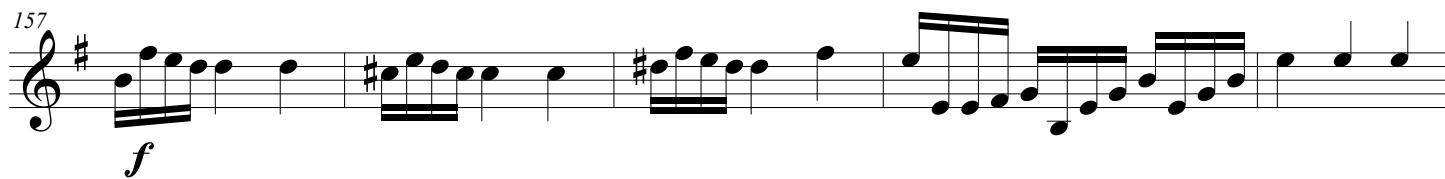
p

145

f

149

f



194

f *p* *f* *p*

199

p *f*

204

p *p*

210

f *p*

216

f

221

226

3

The musical score for Violon II spans measures 194 to 226. The key signature is one sharp (F#). The score is written in treble clef. Measures 194-198 show a sequence of eighth-note patterns with dynamics *f* and *p*. Measures 199-203 continue with similar patterns, including rests and slurs. Measures 204-208 feature more complex rhythmic figures with dynamics *p*. Measures 210-215 show a series of eighth-note runs with dynamics *f* and *p*. Measures 216-220 continue with eighth-note patterns and dynamics *f*. Measures 221-225 show a mix of eighth and sixteenth notes. Measure 226 concludes with a triplet of eighth notes.