

Alto

The Robin

for Alto, Bb Clarinet, and Piano

Joseph Fried

8 *mp*

A ro-bin he sat in a tree--- and he ne - ver stopped look - ing at

13

me---, and I won--- - dered, why do you stare---? Is it

16 *mf*

me-- or some - thing I wear---? You're a bird, not one thing

19

more---, and you do not ev - en know-- me---. And if I've been un-true at

23

all-----, it's noth - ing you-----would know. Go a -

26

way, you're not my friend-----. Let me be, I'm near the end----. Your

30

song is sad and I'll be glad when you have flown--- a - way----.

41 *mp* *mf*

A ro - bin he flew through the air-- and he ne - ver stopped cir - cling my

45

chair---, and I won - dered, how do you know----- that my

48



heart, it stopped long, long a - go---? You're a bird, not one thing more-- and you

52



do not ev - en know-- me---. And if I've been un - true at all-----, it's

56



noth - ing you----- would know. Go a - way, you're not my

59



friend----. Let me be, I'm near the end----. Your song is sad and

63



I'll be glad when you have flown--- a - way----. A

66



ro - bin I no long - er see----- but I sense he is still near to

69



me----- and I won----- - der---, why do you

71



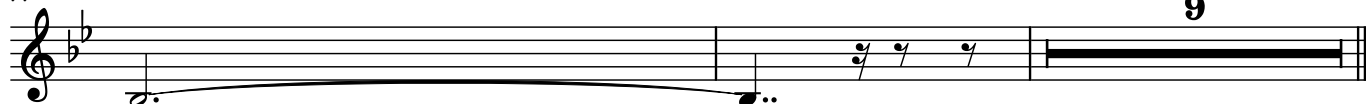
stay----? Is your song just an oth-er way to pray---? Lit - tle

74



bird---- say good - bye-----. Lit - tle bird, just say good -

77



bye-----.

The Robin

Joseph Fried

♩. = 76

7

20

34

40

54

79

84

p

Piano

The Robin

for Alto, Bb Clarinet, and Piano

Joseph Fried

8

mp

13

17

mf

21

25

29

Measures 29-32. Treble and bass staves. Measure 29 has a fermata on the treble staff. Measures 30-32 continue the melodic and harmonic progression.

33

6

6

mp

Measures 33-36. Measure 33 has a fermata. Measures 34-35 are marked with a '6' and a horizontal line, indicating a six-measure rest. Measure 36 begins with a mezzo-piano (*mp*) dynamic.

43

mf

Measures 43-46. Measure 43 begins with a mezzo-forte (*mf*) dynamic. The passage continues with various chords and melodic lines.

47

f

mf

Measures 47-50. Measure 47 has a forte (*f*) dynamic. Measure 49 has a mezzo-forte (*mf*) dynamic. The passage continues with various chords and melodic lines.

51

Measures 51-54. The passage continues with various chords and melodic lines.

55

Measures 55-58. The passage continues with various chords and melodic lines.

59

Measures 59-62 of a musical score in B-flat major. The right hand features a melodic line with eighth and sixteenth notes, while the left hand provides a harmonic accompaniment with chords and single notes. Measure 62 ends with a repeat sign.

63

Measures 63-66 of a musical score in B-flat major. The right hand continues the melodic line, and the left hand provides harmonic support. Measure 64 includes a *mp* (mezzo-piano) dynamic marking. Measure 66 ends with a repeat sign.

67

Measures 67-70 of a musical score in B-flat major. The right hand features a melodic line with eighth and sixteenth notes, and the left hand provides a harmonic accompaniment. Measure 70 ends with a repeat sign.

71

Measures 71-74 of a musical score in B-flat major. The right hand features a melodic line with eighth and sixteenth notes, and the left hand provides a harmonic accompaniment. Measure 74 ends with a repeat sign.

75

Measures 75-78 of a musical score in B-flat major. The right hand features a melodic line with eighth and sixteenth notes, and the left hand provides a harmonic accompaniment. Measure 78 ends with a repeat sign. The final measure (79) is a double bar line with a repeat sign, indicating the end of the section.