

Ouverture und Suiten aus Thésée

Ouverture

J.-B. Lully

6

11

16

1. 2. [Allegro]

21

27

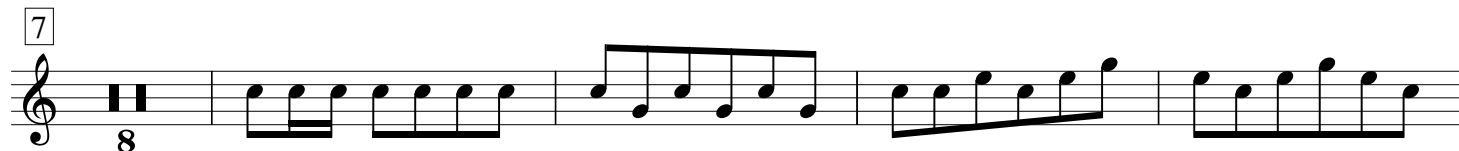
33

39

45

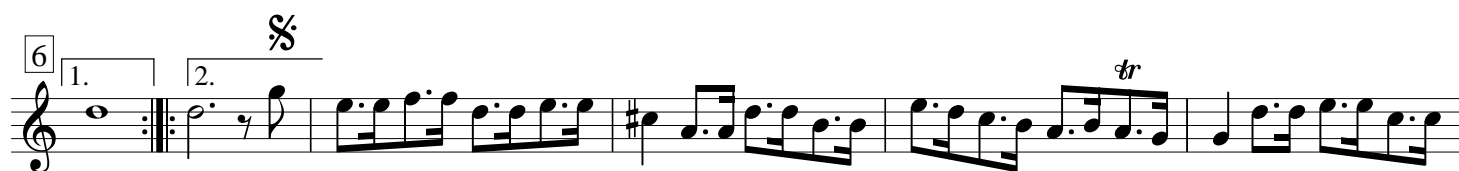
[1. Suite]

1. Prélude

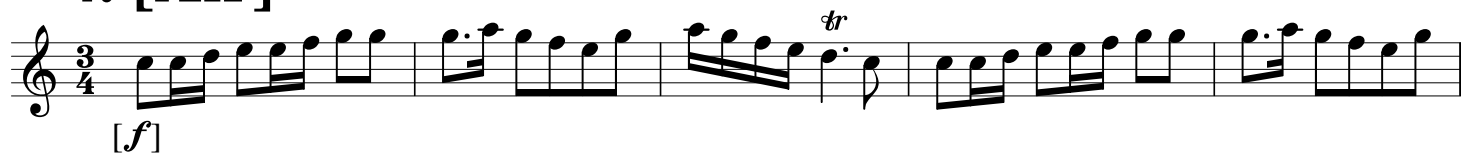


Trio tacet

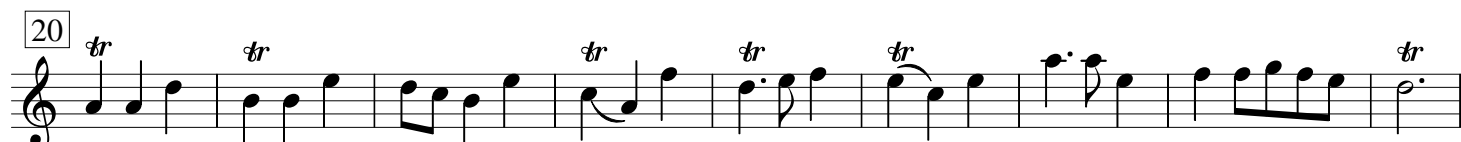
3. Combattans



4. [Air]



5. Air



Trio tacet

2. Suite 7. Prélude



8. Air

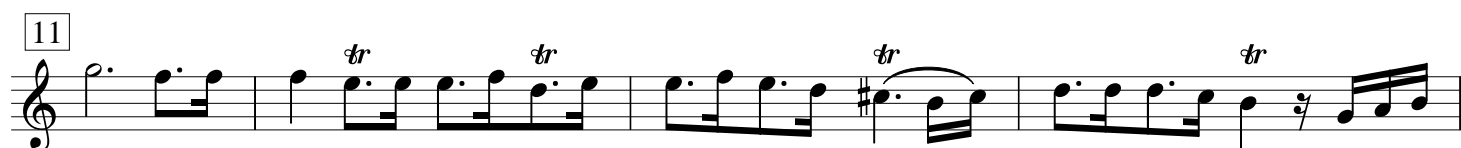
Musical score for '8. Air' in G major, 3/4 time. The score consists of five staves of music. The first staff begins with a treble clef, a key signature of one sharp (F#), and a 3/4 time signature. It features a series of eighth and sixteenth notes, including a triplet of eighth notes. The second staff starts at measure 6 and includes a trill (tr) and first/second endings. The third staff starts at measure 11 and includes trills. The fourth staff starts at measure 16 and includes a trill. The fifth staff starts at measure 21 and includes trills and first/second endings.

9. Air

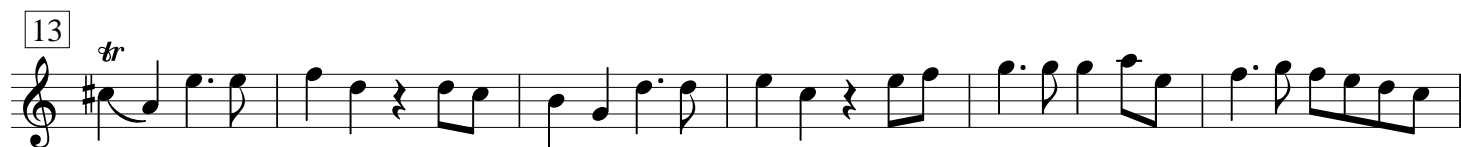
Musical score for '9. Air' in G major, 3/4 time. The score consists of four staves of music. The first staff begins with a treble clef, a key signature of one sharp (F#), and a 3/4 time signature. It features a series of eighth and sixteenth notes, including trills (tr). The second staff starts at measure 8 and includes trills and first/second endings. The third staff starts at measure 16 and includes a trill. The fourth staff starts at measure 22 and includes a trill.

3. Suite

10. Prélude



11. Air



Trio tacet

13. Air

Musical score for '13. Air' in 6/8 time. The score consists of three staves. The first staff begins with a repeat sign and a trill (tr) over a dotted quarter note. The second staff continues the melody with trills. The third staff includes first and second endings, both marked with repeat signs and trills.

4. Suite 14. Air

Musical score for '4. Suite 14. Air' in 3/4 time. The score consists of three staves. The first staff begins with a trill (tr) over a dotted quarter note. The second staff continues the melody with trills. The third staff includes first and second endings, both marked with repeat signs and trills.

15. Gigue

Musical score for '15. Gigue' in 6/4 time. The score consists of four staves. The first staff begins with a repeat sign and a trill (tr) over a dotted quarter note. The second staff continues the melody with trills. The third staff includes first and second endings, both marked with repeat signs and trills. The fourth staff concludes the piece with a trill (tr) over a dotted quarter note. The score ends with the instruction 'da capo' and a repeat sign.

da capo %