

## Trombone 1

## Variations on a theme of Paganini

## Set 1

Brahms/Johnson

## Thema

1 Non troppo presto [ $\text{♩} = 110$ ]

## Var. 1



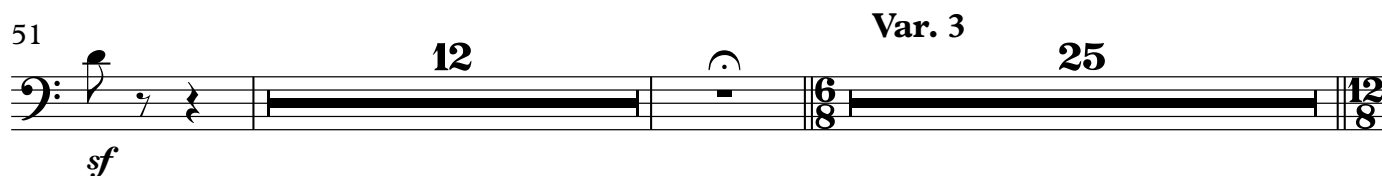
25



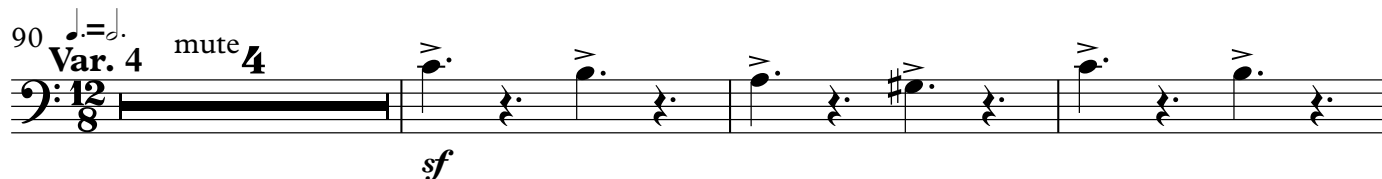
## 41 Var. 2



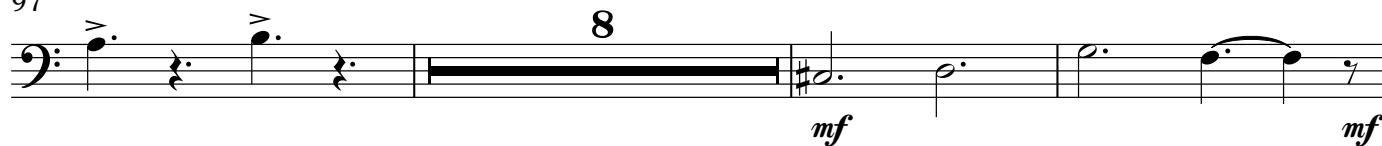
51



90



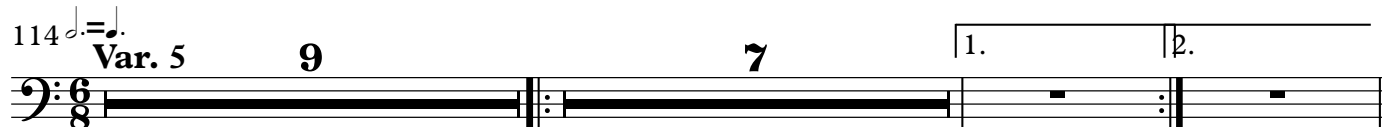
97



108

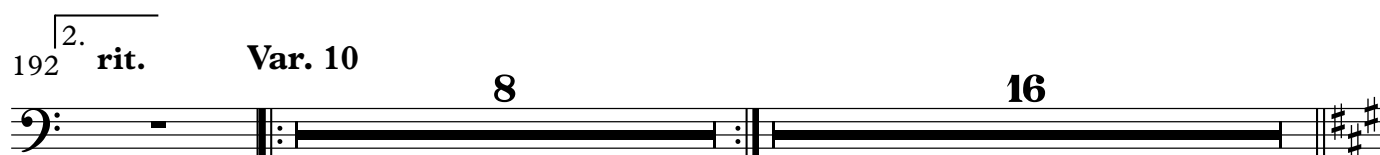
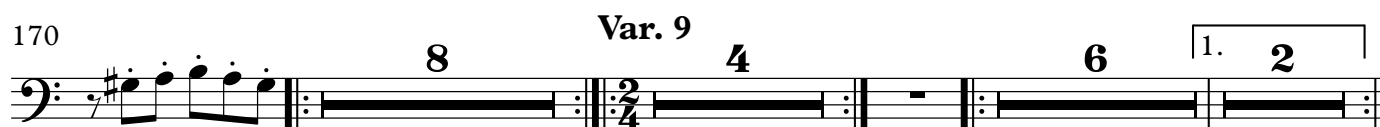


114



## 132 Var. 6



**Var. 7**  
 144 *senza*

**Var. 13**  
 248 **Vivace et scherzando**

**Var. 14**  
 261 **Allegro**


266



273



285

297 **Presto, ma non troppo**

335



Trombone 2

Variations on a theme of Paganini  
Set 1

Brahms/Johnson

**Thema**  
1 **Non troppo presto** [ $\text{♩} = 110$ ]

**Var. 1**

8 6 *sfp* *sfp* *sfp* *sfp*

21 **Var. 2** 20 5 *sf* *sf* *sf* *sf*

50 11 *sf* *sf*

65 **Var. 3** 25 **Var. 4** *mute* 4 *sf*

96 9 *mf*

108 2

114 **Var. 5** 9 7 1. 2.

132 **Var. 6** 4 8 **Var. 7** 9 7

160 1. 2. **Var. 8** senza *mf*

167

171 **Var. 9** 8 4 6 2

192 2. rit. **Var. 10** 8 16

217 **Var. 11** 8 7 1. 2. rit.

234 **Var. 12** 4 7 1. 2.

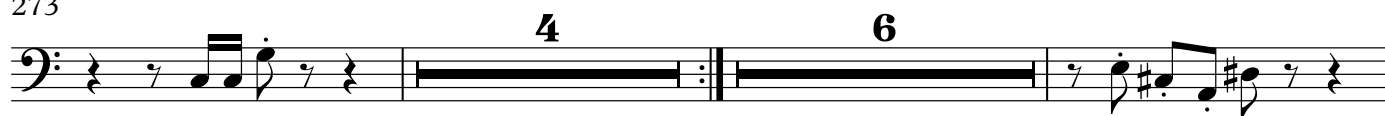
**Var. 13**  
248 **Vivace et scherzando** 4 7 1. 2.

**Var. 14**  
**261 Allegro**

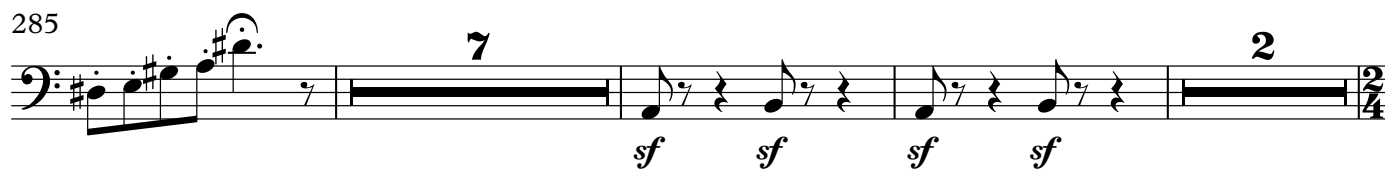
266



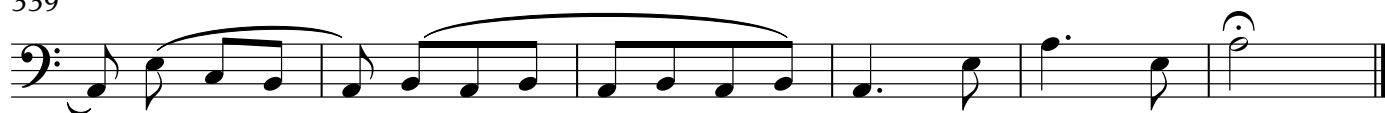
273



285

297 **Presto, ma non troppo**

339



## Bass Trombone

## Variations on a theme of Paganini

## Set 1

Brahms/Johnson

**Thema**  
1 **Non troppo presto** [ $\text{♩} = 110$ ]

**Var. 1**

8 8 4

*sfp* *sfp* *sfp* *sfp*

25

8

41 **Var. 2** 23 **Var. 3** 25

90 **Var. 4** 21

$\text{♩} = \text{♩}$   
mute

114 **Var. 5** 9 7 1. 2.

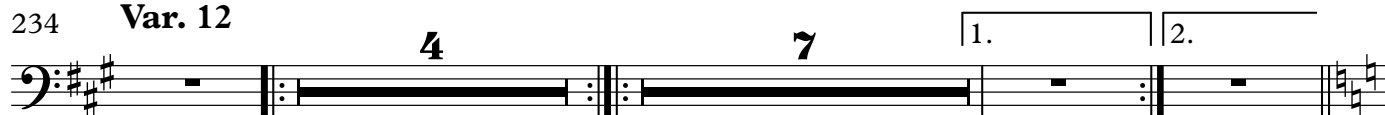
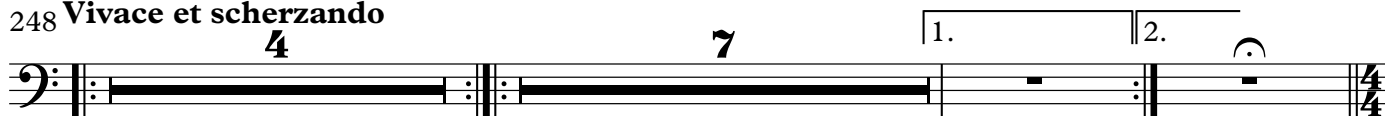
132 **Var. 6** 4 8 **Var. 7** 9 7 1.

161 2. **Var. 8** 9 8 **Var. 9** 4

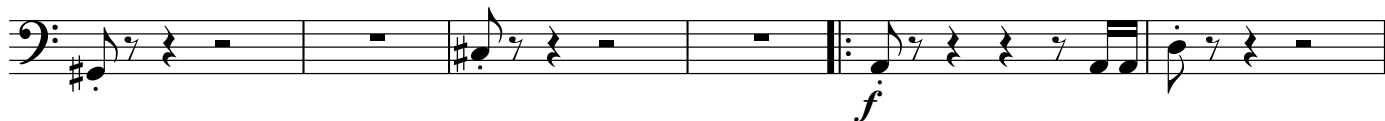
184 6 1. 2 2. rit. **Var. 10** 8 16

217 **Var. 11** 8 7 1. 2. rit.

## Bass Trombone

234 **Var. 12****Var. 13**  
248 **Vivace et scherzando****Var. 14**  
261 **Allegro**  
senza

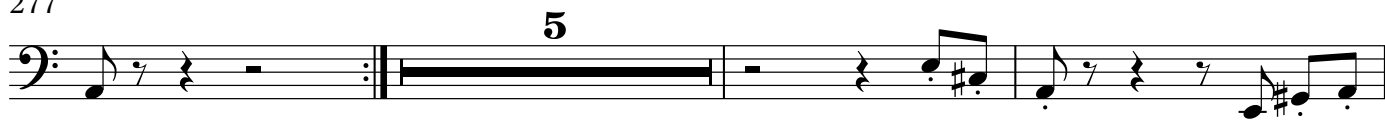
266



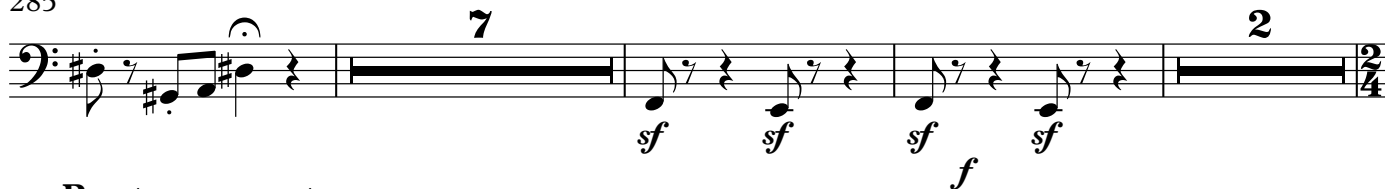
272



277



285

297 **Presto, ma non troppo**

337

