

Piccolo / Alto flute in G

# Concerto stilizzato

*paraphrase on a motif by Brahms*

## PARTE PRIMA: "CADENZA"

Adagio  $\text{♩} = 60$  Tamás Beischer-Matyó

7 ALTO FLUTE 10 5

*p* espressivo

20 3 Cadenza change to PICCOLO 25

*mf* *ff* *ppp* *ff*

30 poco rall. Poco sostenuto

2 *ff*

## PARTE SECONDA: "FORMA-SONATA"

Allegro con brio  $\text{♩} = 180$  ( $\text{♩} = 60$ )

35 40 17

*ff* *ff* *ff* *pp*

S. pno. 60

6

Copyright Tamás Beischer-Matyó, 1996

[www.beischermatyó.hu/concerto\\_stilizzato](http://www.beischermatyó.hu/concerto_stilizzato)

This work is licensed under the Creative Commons Attribution-NonCommercial-NoDerivatives 4.0 International License.  
To view a copy of this license, visit [www.creativecommons.org/licenses/by-nc-nd/4.0/](http://www.creativecommons.org/licenses/by-nc-nd/4.0/)

70 *f* 3 *f* 3 12

85 Fl. *ff*

90 *ff* 2

poco ritard. Sostenuto  $\text{♩} = 48$  ( $\text{♩} = 144$ )

allarg. - - - - -

95 *ff* grandioso

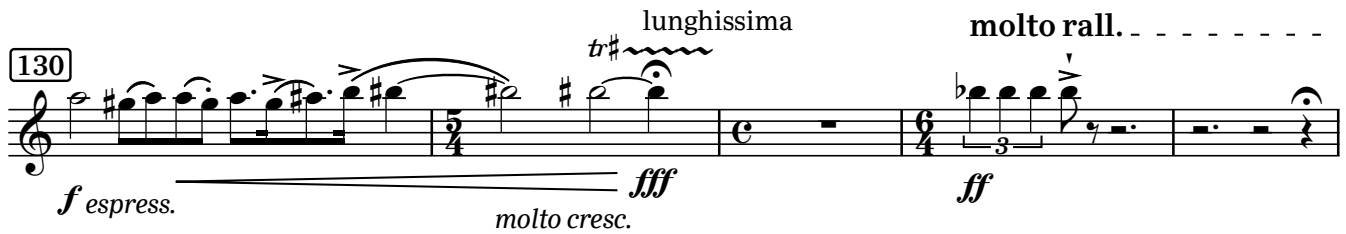
a tempo  $\text{♩} = 60$  ( $\text{♩} = 180$ )

100

105 poco ritard. a tempo poco ritard.

110 a tempo 115 *f* *espressivo* *f*

125

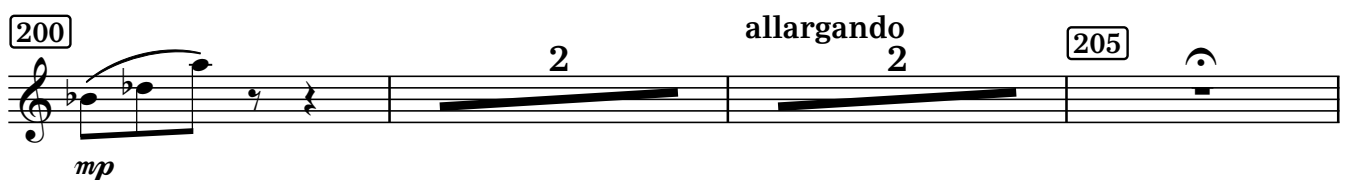
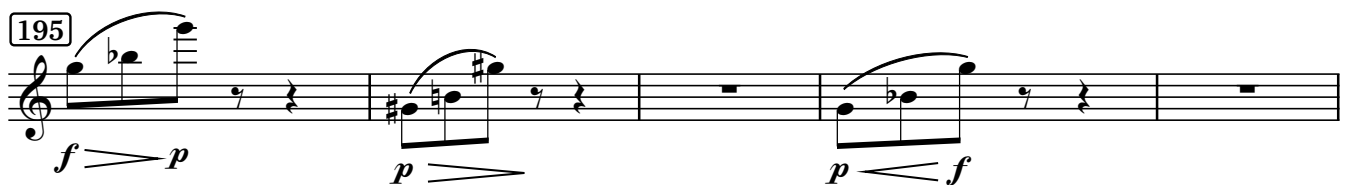


## PARTE TERZA: "LIED"

*accel.*  $\text{♩} = 180$  (a tempo)

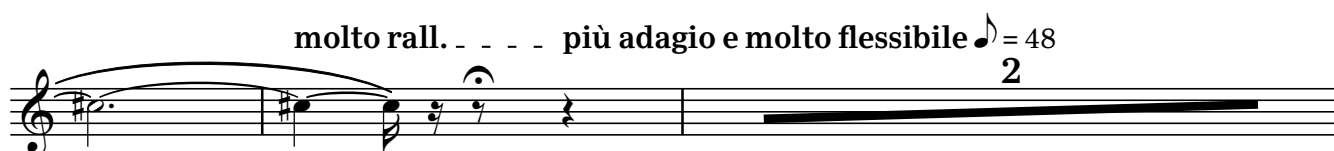
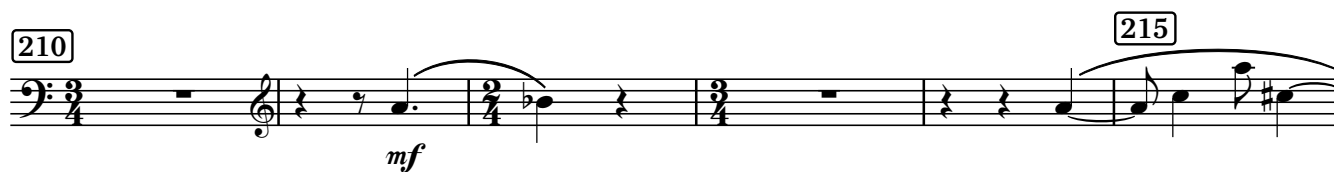
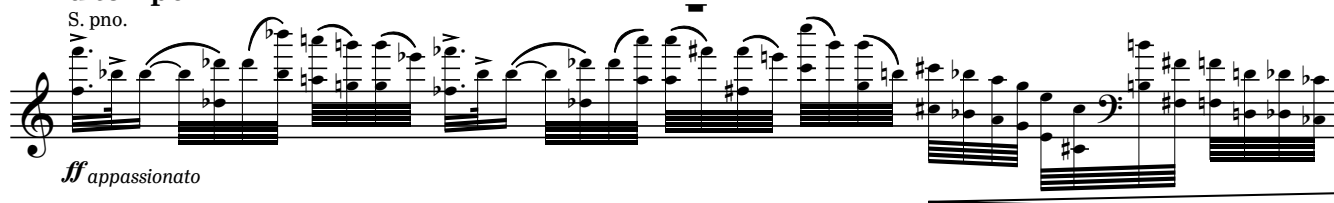
subito *Adagio molto*  $\text{♩} = 60$  ( $\text{♩} = \text{♩}$ )

change to ALTO FLUTE

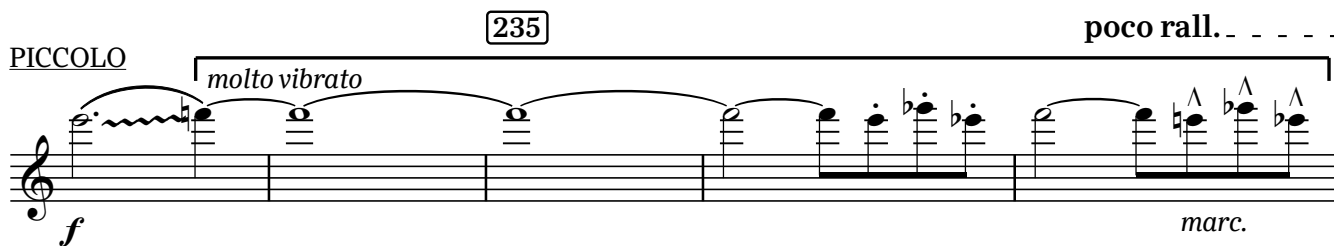
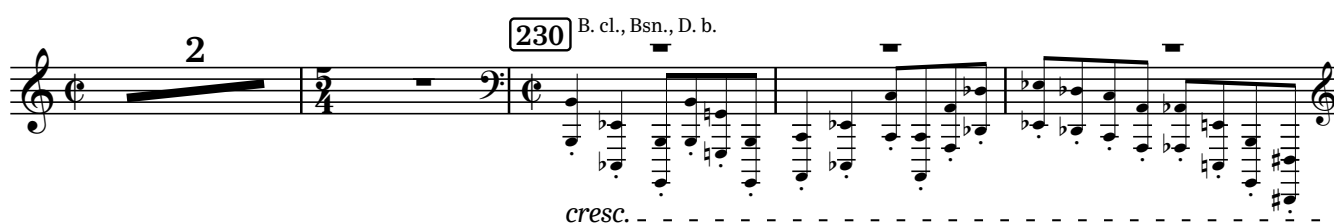
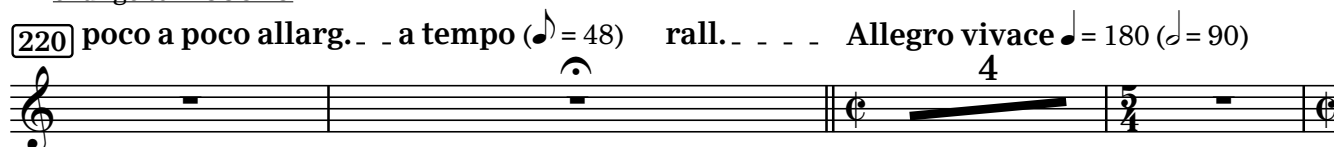


**a tempo**

S. pno.

**PARTE QUARTA: "RONDÒ"**

change to PICCOLO



**rall.** **a tempo**

*trb* **245** 2 **250** 2

C. a., B. cl. **255**

*mf espress.* *f* *mf* *fff*

Fl. **260**

*pp* *mf rigoroso*

**265**

**270** 2 **275** 5

**280** *tutta forza* *pp* **285**

*trb* **290** *trb*

**poco ritard.** **a tempo**

2 **295** *pp* **300**

**310** *f* *ff* Tpt. 1 Cl. 1 Tpt. 1 +Cl. 1

*rall.* -----

*ff*

flutt. ord. flutt.

**Meno vivace** ♩ = 144

315 10 325 14 340

*rall.* **a tempo**

Tpt. 1

*mp*

S. pno.

345

*ff*

ord.

*rall.* ----- **Allegro vivace** ♩ = 180

350 23 5

**poco rall. Sostenuuto** ♩ = 48 (♩ = 144)

Bsn., D. bsn., Tbn., Tba.

380

*ff* **grandioso**

**allarg.** ----- **a tempo** ♩ = 180

385

*tr*

**rall. molto**

390 2

## PARTE QUINTA: "CONCLUSIONE"

**a tempo** ♩ = 180

395

*fff* *sf* *sf* *sf* *ff* **marc.**

400

