

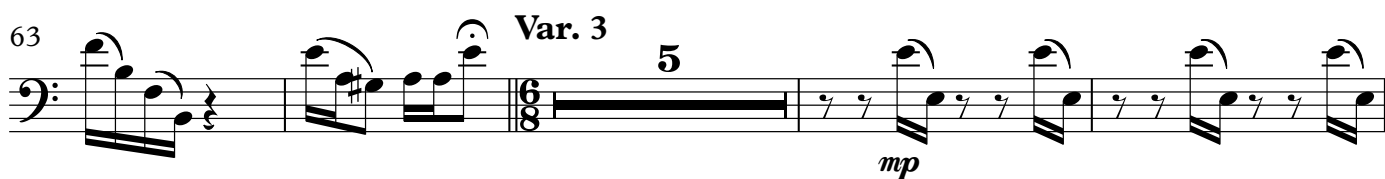
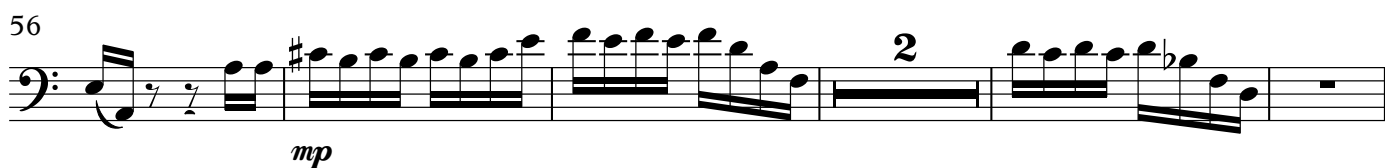
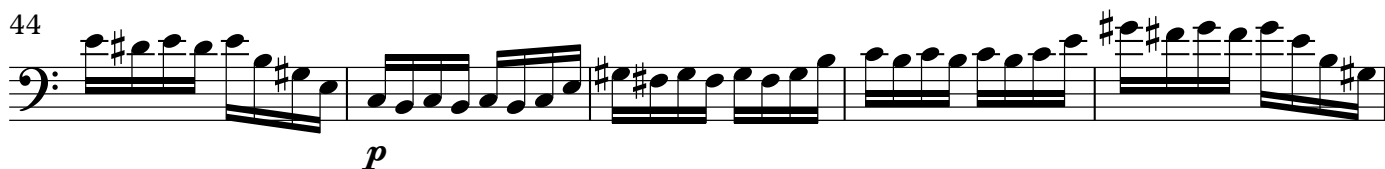
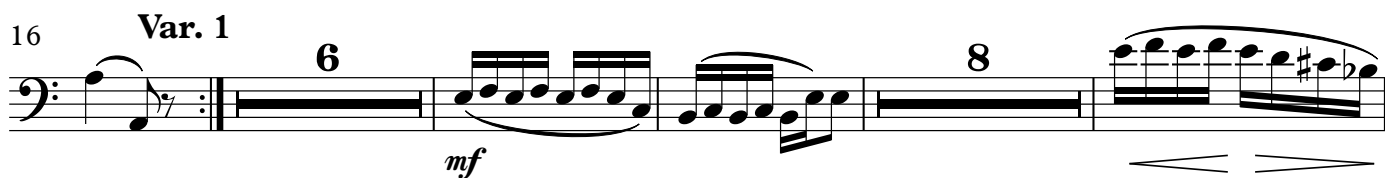
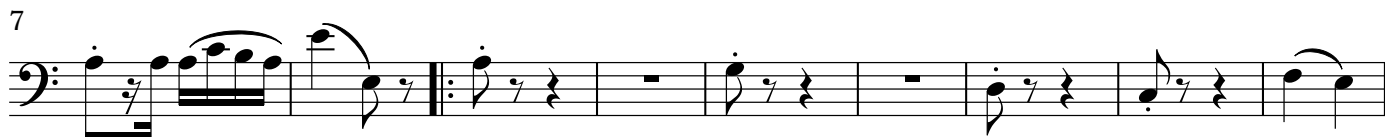
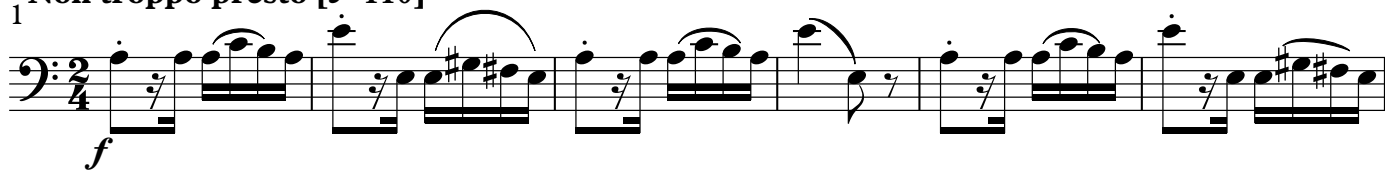
Bassoon 1

Variations on a theme of Paganini

Set 1

Brahms/Johnson

Thema

1 Non troppo presto [$\text{♩} = 110$]

144 **Var. 7**

153



160

**Var. 8**

175

**Var. 9**

180



186



191

**Var. 10**

197



205

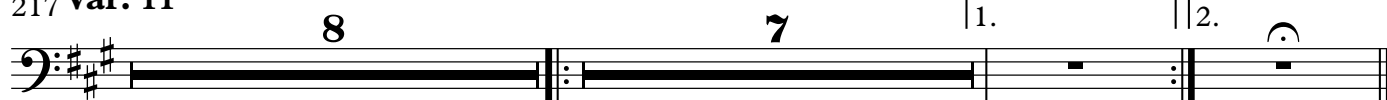


211

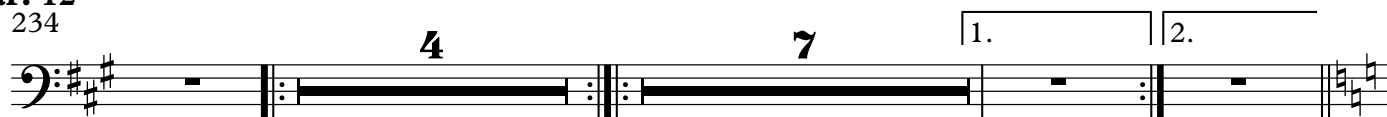


Bassoon 1

217 **Var. 11**



Var. 12



Var. 13

248 **Vivace et scherzando**



255



Var. 14

261 **Allegro**



266



270



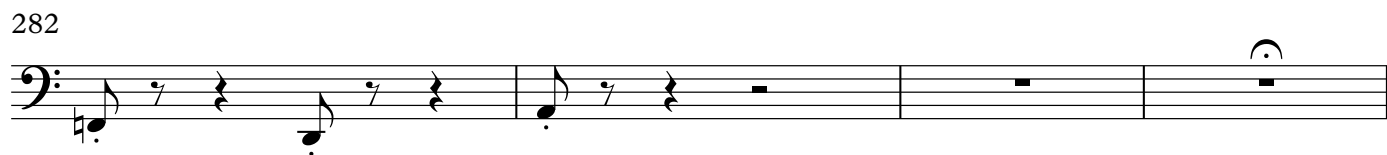
274



278



282



286



289



292

**Presto, ma non troppo**

297



311



323



334



Bassoon 2

Variations on a theme of Paganini

Set 1

Brahms/Johnson

Thema

1 Non troppo presto [$\text{♩} = 110$]

7 *f*

16 Var. 1

34 *mf*

40 Var. 2

45 *f*

51 *p*

59 *mp*

65 Var. 3

16

81 *mp*

88 *mp* Var. 4 9

101

104 8

Var. 5

114 *p* 2

123

130 1. 2. Var. 6

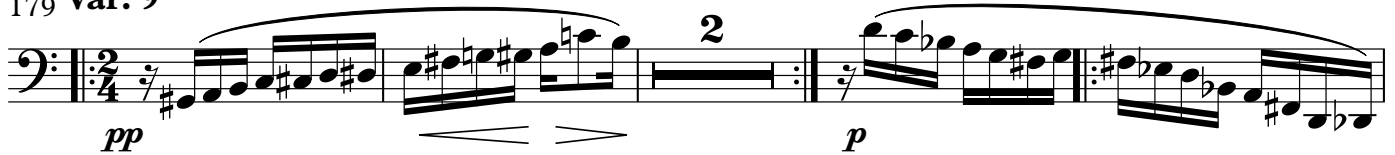
135 *p* < > < > < >

141 Var. 7 < > 2 *f*

149 4

159 1. 2. Var. 8 9

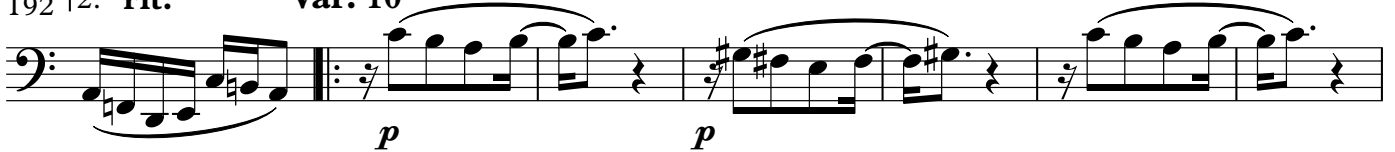
173

179 **Var. 9**

185



189

192 **2. rit. Var. 10**

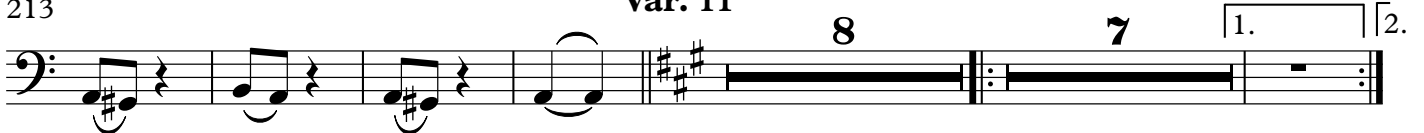
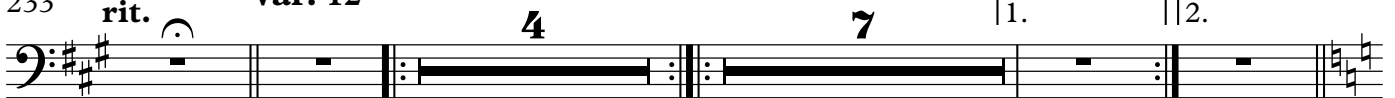
199



206



213

Var. 11233 **rit. Var. 12**

Var. 13248 **Vivace et scherzando***mp*

255

**Var. 14**261 **Allegro**

266



270



275



280



286



289



292

297 **Presto, ma non troppo**

324



335



Contrabassoon

Variations on a theme of Paganini

Set 1

Brahms/Johnson

Thema

1 Non troppo presto [♩=110]

Var. 1

8 8 6 8

mf

33

Var. 2

41

f

50

p

56

4

65

Var. 3

25

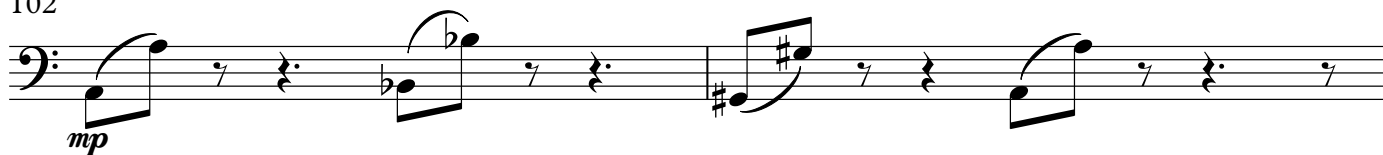
♩=♩.

Var. 4

12

8 12 8

102



104



Var. 5

114 $\text{♩} = \text{♩}$ 

121



129



135



142

Var. 7



148



154



160 1. 2. **Var. 8**

167

174 **Var. 9** 4

183

191 2. **rit. Var. 10** 8 2 2

207

214 **Var. 11** 8 7 1. 2.

233 **rit. Var. 12** 4 7 1. 2.

Var. 13248 **Vivace et scherzando**

255 *mp*

Var. 14
261 **Allegro**

266 *f* *ff*

271

276

281

290

295 **Presto, ma non troppo**

2 **22**

mp *cresc.*

324

15

ff