

Piano Sonata No. 25 in G Major

Viola

1. Presto alla tedesca

Ludwig van Beethoven
Joshua Choe

Presto alla tedesca

7

14

22

28

35

44

51

f *sf* *f* *p* *cresc.* *sf* *p* *cresc.* *sf* *dim.* *p* *cresc.* *sf* *sf* *dim.* *p* *f* *f*

Piano Sonata No. 25 in G Major

2

57



63



p dolce

69



75



f

82



p cresc. f

88

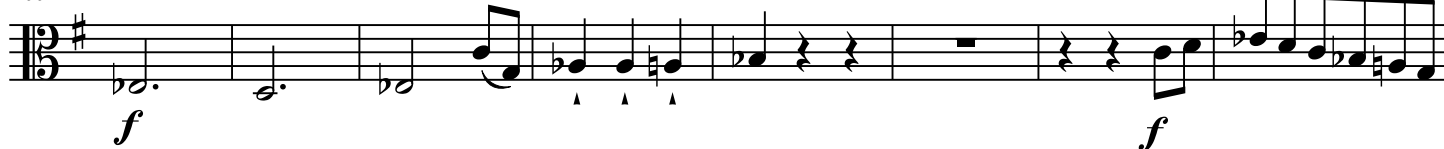


p dolce

94



100



f

f

108

113

p *cresc.* *p* *dolce*

This musical staff contains measures 108 through 113. It begins with a treble clef, a key signature of one sharp (F#), and a 3/4 time signature. The melody starts with a half note G4, followed by a quarter rest, then an eighth-note pair of G4 and A4. The music continues with a series of eighth and sixteenth notes, featuring a crescendo. A piano (*p*) dynamic is marked at measure 110, followed by a *dolce* marking at measure 113.

114

119

This musical staff contains measures 114 through 119. It continues the melodic line with a series of eighth and sixteenth notes, maintaining a steady rhythmic pattern.

120

125

p cresc. *f*

This musical staff contains measures 120 through 125. The melody consists of continuous eighth and sixteenth notes. A piano (*p*) dynamic with a crescendo (*cresc.*) is marked at measure 120, and a forte (*f*) dynamic is marked at measure 125.

126

132

This musical staff contains measures 126 through 132. The melodic line continues with eighth and sixteenth notes, ending with a half note G4 in measure 132.

133

140

p

This musical staff contains measures 133 through 140. It features a series of eighth and sixteenth notes, with a piano (*p*) dynamic marking at measure 138. A fermata is placed over the final note of measure 140.

141

147

p *cresc.*

This musical staff contains measures 141 through 147. It begins with a half note G4, followed by a quarter rest, then an eighth-note pair of G4 and A4. The music continues with a series of eighth and sixteenth notes, featuring a piano (*p*) dynamic and a crescendo (*cresc.*) leading to measure 147.

148

153

sf *p* *cresc.* *sf*

This musical staff contains measures 148 through 153. It features a series of eighth and sixteenth notes, with dynamics of *sf* (fortissimo), *p* (piano), *cresc.* (crescendo), and *sf* (fortissimo) marked throughout the staff.

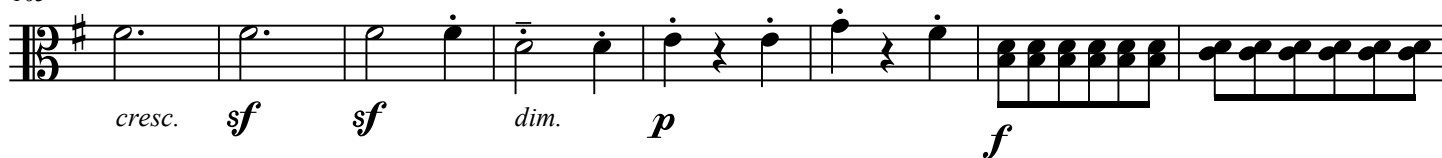
154

159

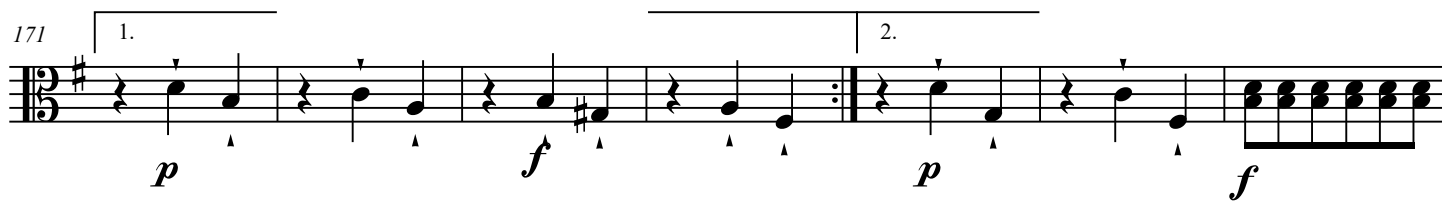
p *cresc.* *sf* *sf* *dim.*

This musical staff contains measures 154 through 159. It begins with a half note G4, followed by a quarter rest, then an eighth-note pair of G4 and A4. The music continues with a series of eighth and sixteenth notes, featuring a piano (*p*) dynamic, a crescendo (*cresc.*), and fortissimo (*sf*) dynamics, ending with a *dim.* (diminuendo) marking.

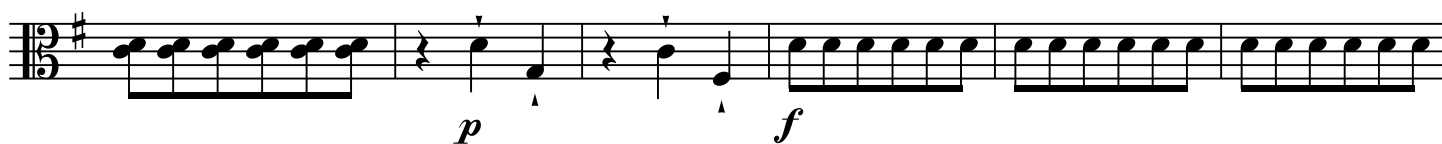
163



171



178



184



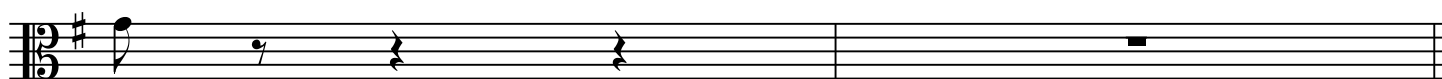
190



197



205



Piano Sonata No. 25 in G Major

Viola

2. Andante

Ludwig van Beethoven
Joshua Choe

Andante

5

9

12

14

16

18

20

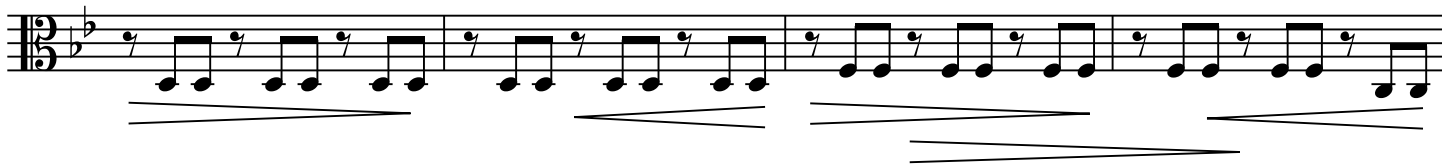
p *espress.*

p *cresc.*

p *dim.* *pp* *cresc.*

p *dim.* *pp* *espress.*

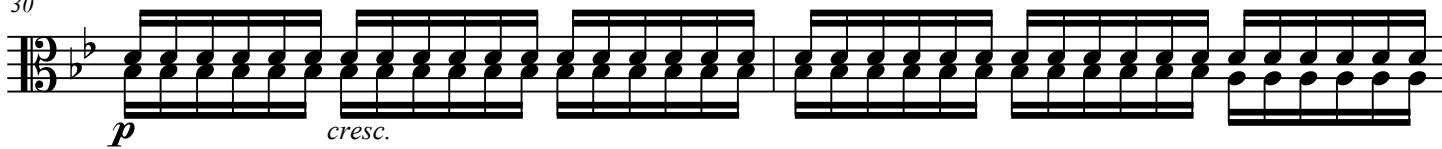
23



27



30



32



Piano Sonata No. 25 in G Major

Viola

3. Vivace

Ludwig van Beethoven
Joshua Choe

Vivace

10

1. 2.

19

25

38

45

52

59

66

p 3 3 3 3 3 3 3

74

79

85

p *f*

93

p *f*

99

p *f* *p*

106

112

p *cresc.* *p*

118

