

Markus-Passion

1

Parte prima
1. Sonata (Chor)

Violino 2

zugeschrieben:
Reinhard Keiser (1674-1739)

Adagio



6



12



18



22 Allegro



30



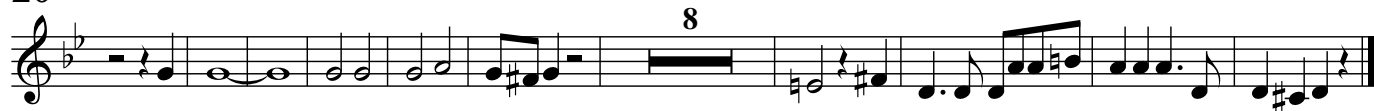
2. Recitativo



10



20



3. Aria: tacet

4. Recitativo

Adagio

4

8

6

5. Choral

4

7

10

13

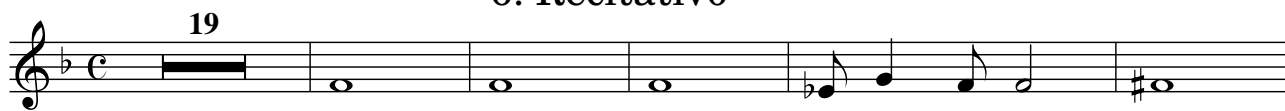
16

19

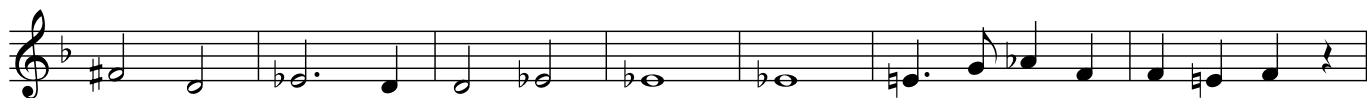
22

25

6. Recitativo



25



7. Recitativo: tacet

8. Aria

Adagio



6



13



18

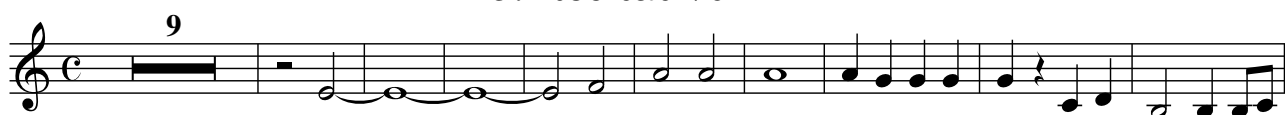


24



Da capo al fine

9. Recitativo



10. Recitativo: tacet

11. Chor



5



12. Recitativo



13. Chor

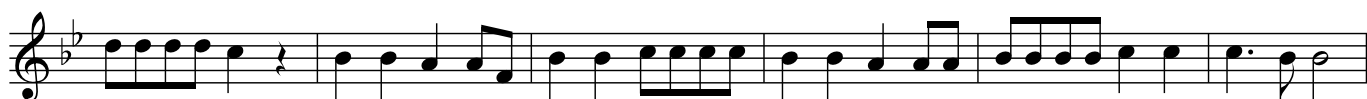


14. Recitativo: tacet

15. Chor



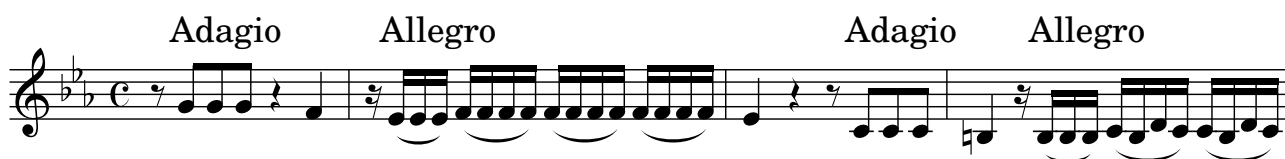
6



16. Recitativo: tacet

17. Aria: tacet

18. Sinfonia



5



19. Recitativo: tacet

20. Aria

Allegro

8

15

21

Fine Da capo al fine

21. Recitativo: tacet

22. Chor/ Recitativo/ Chor

Presto

4

Presto

23. Choral

6

11

Parte seconda

24. Sinfonia

Largo

Measures 6-18 of the Sinfonia. The music is in 3/4 time, key of B-flat major. Measure 6 starts with a treble clef and a B-flat key signature. The melody consists of eighth and quarter notes. Measure 18 ends with a double bar line.

25. Recitativo: tacet

26. Chor

Alla breve

3

Measures 9-30 of the Chor. The music is in 3/8 time, key of B-flat major. Measure 9 starts with a treble clef and a B-flat key signature. The melody consists of quarter and eighth notes. Measure 30 ends with a double bar line.

27. Recitativo: tacet

28. Aria

Poco allegro

7

12

18

25

32

39

46

50

29. Recitativo: tacet

30. Aria: tacet

31. Recitativo: tacet

32. Aria: tacet

33. Recitativo: tacet

34. Chor

Allegro

6

12

35. Recitativo: tacet

36. Chor

Andante

Allegro

11

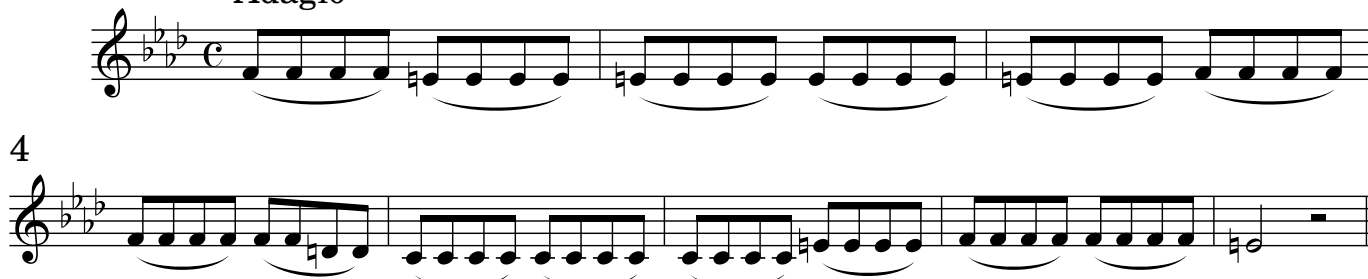
17

22

37. Recitativo: tacet

38. Aria

Adagio



39. Recitativo: tacet

40. Chor

Andante



41. Recitativo: tacet

42. Choral: tacet

43./44. Aria

Adagio



Fine




Da capo al fine

10



Musical notation for measure 10, featuring a treble clef, key signature of two flats, and a complex melodic line with eighth and sixteenth notes.

15



18

Musical notation for measure 18, featuring a treble clef, key signature of two flats, and a series of eighth and sixteenth notes.

47. Aria

[illegible]

9

Measure 9: Treble clef, key signature of one flat (Bb). The measure contains a series of eighth and sixteenth notes, some with accents and slurs, indicating a fast, rhythmic passage.

12

18

Musical notation for measure 18, featuring a treble clef, a key signature of one flat (B-flat), and a 4/4 time signature. The melody consists of eighth and quarter notes, with a final half note G4.

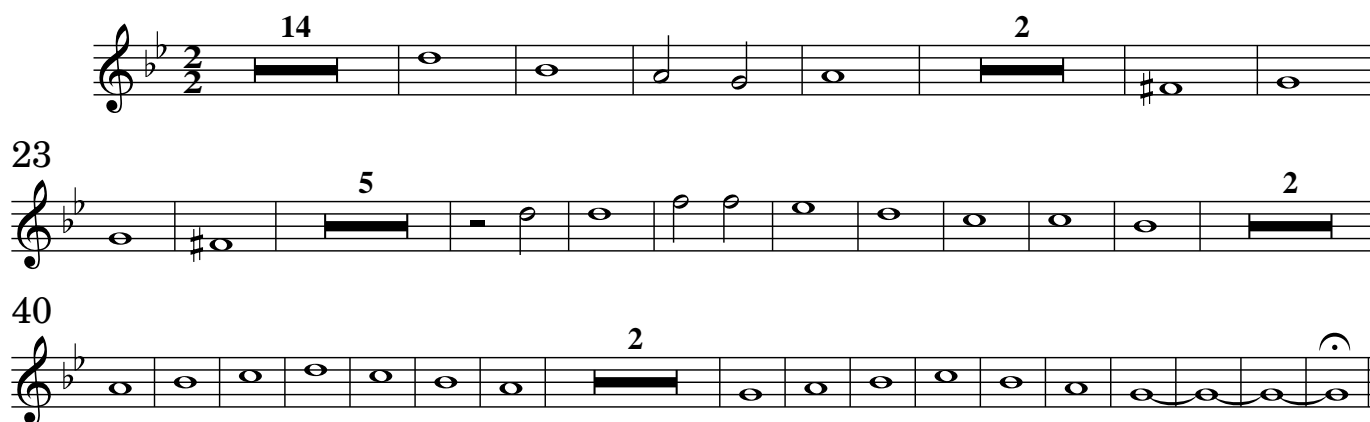
48. Recitativo: tacet

49. Choral



50. Chor

Alla breve



51. Choral



52. Chor

Presto

