

Viola

String Quartet

Opus 7 No. 3 in d-minor

Jacques Féréol Mazas (1782 - 1749)

Adagio M.M. ♩ = 58

The musical score for Viola, Opus 7 No. 3 in d-minor by Jacques Féréol Mazas, is presented in six staves. The key signature is d-minor (three flats) and the time signature is 3/4. The tempo is Adagio, with a metronome marking of M.M. ♩ = 58. The score includes various dynamics and articulations:

- Staff 1: *p* (piano) dynamic, starting with a half note D4, followed by eighth notes, and ending with a half note G4.
- Staff 2: Continuation of the eighth-note pattern, ending with a half note G4.
- Staff 3: Continuation of the eighth-note pattern, ending with a half note G4.
- Staff 4: Continuation of the eighth-note pattern, ending with a half note G4.
- Staff 5: Continuation of the eighth-note pattern, ending with a half note G4.
- Staff 6: Continuation of the eighth-note pattern, ending with a half note G4.

The score includes various dynamics and articulations:

- p* (piano) dynamic at the beginning of the first staff.
- f* (forte) dynamic at the beginning of the fourth staff.
- cresc.* (crescendo) marking at the beginning of the fifth staff.
- f* (forte) dynamic at the beginning of the sixth staff.
- pp* (pianissimo) dynamic at the beginning of the seventh staff.
- f* (forte) dynamic at the beginning of the eighth staff.

40

61

68

76

85

90

97

103

11C

2

114



119



127



132



137



142



147



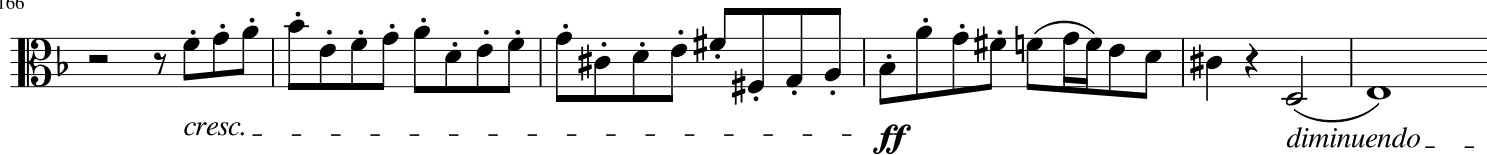
154



161



166



172



178



183



188



193



198



This page is left empty
to facilitate page turns.

This page is left empty toThis page is left empty to
facilitate page turns.facilitate page turns.

This page is left empty to
facilitate page turns.

Minuetto. Allegro M.M. ♩. = 92

9

16

26

36

45

52

63

67

Fine

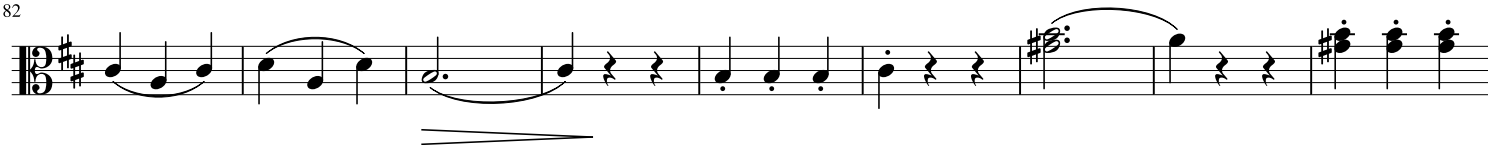
72

Trio

3



82



91



100



109

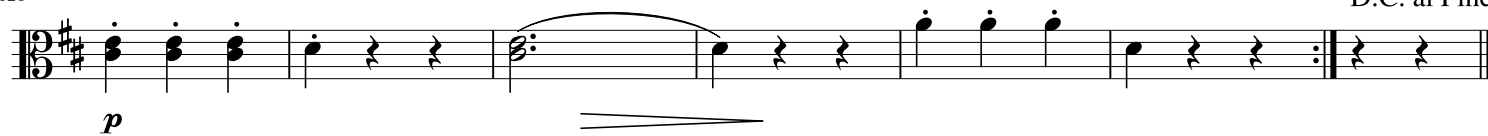


117



126

D.C. al Fine



Adagio molto sostenuto

[illegible]

25



28



32



36



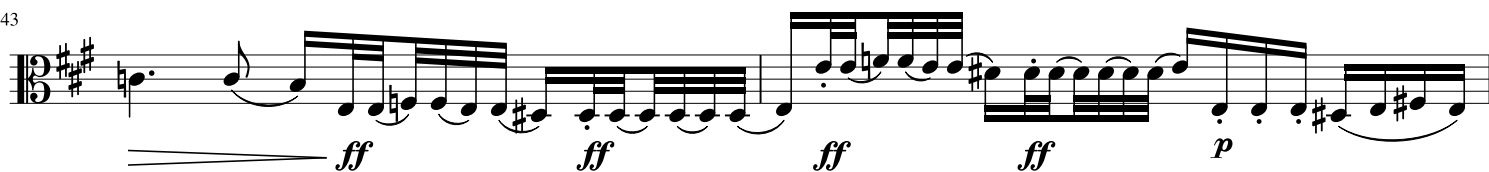
40



41



43



45



48



51



55



58



FINALE. Tempo d'Allegro M.M. ♩ = 138
sur la touche



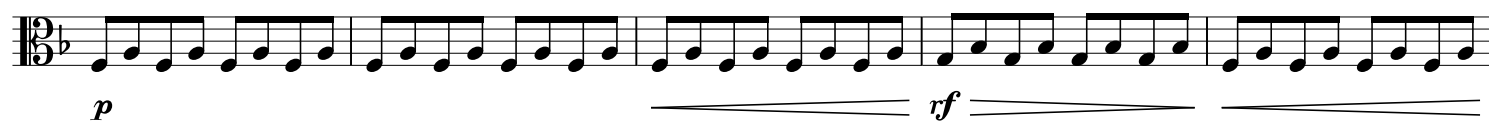
6



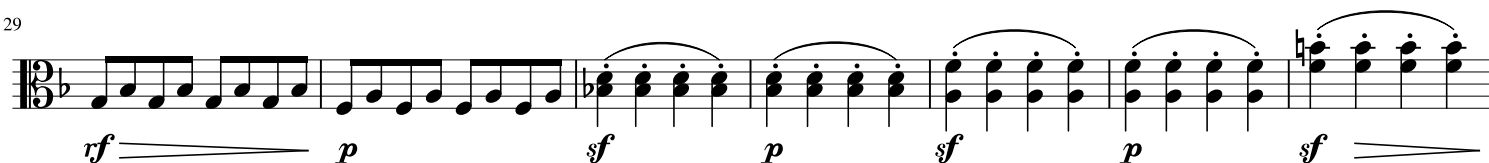
14



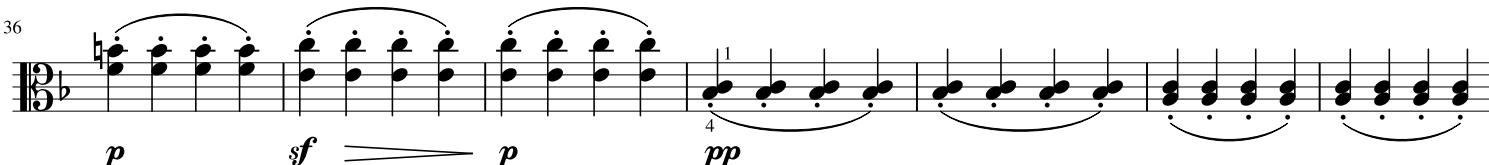
24



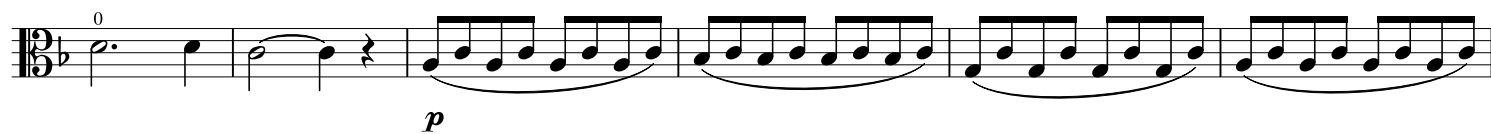
29



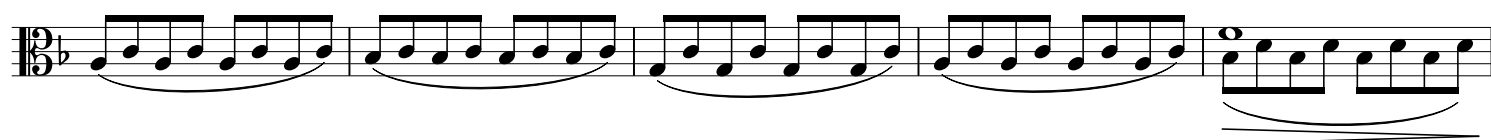
36



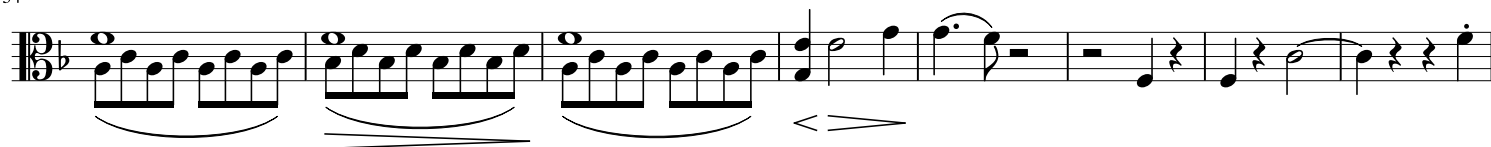
43



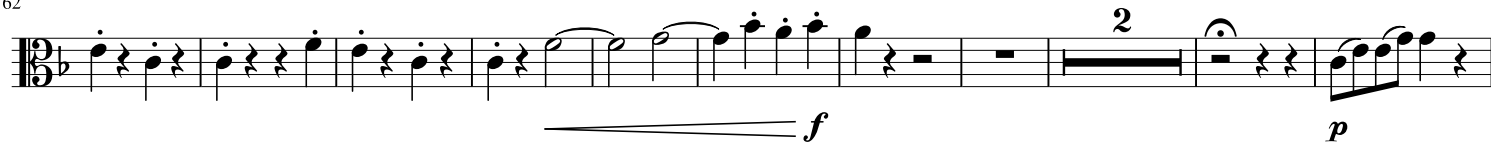
49



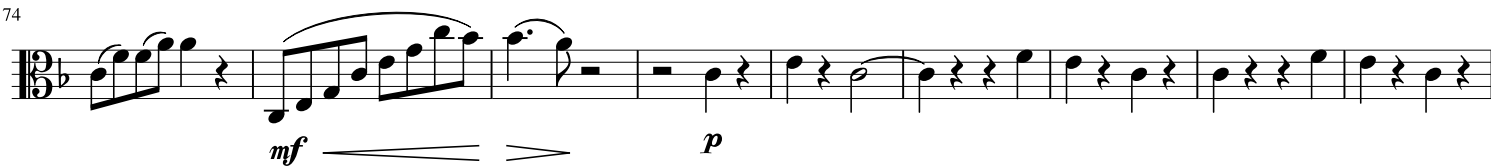
54



62



74



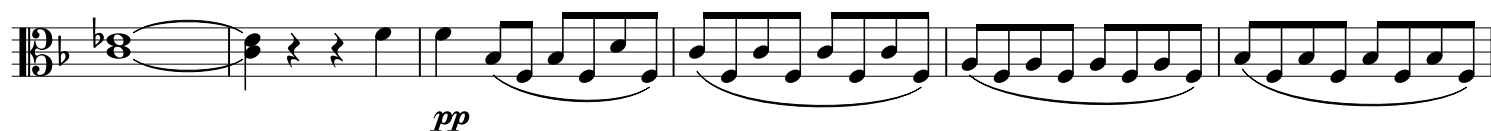
83



94



105



111



116



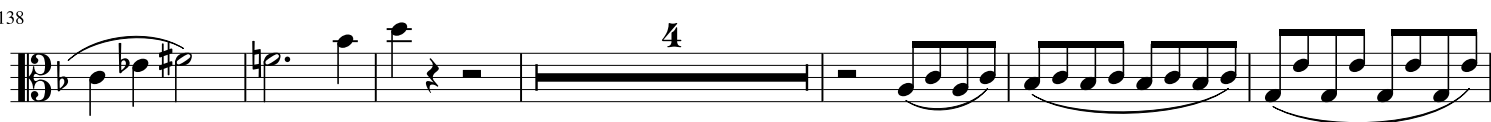
123



130



138



148



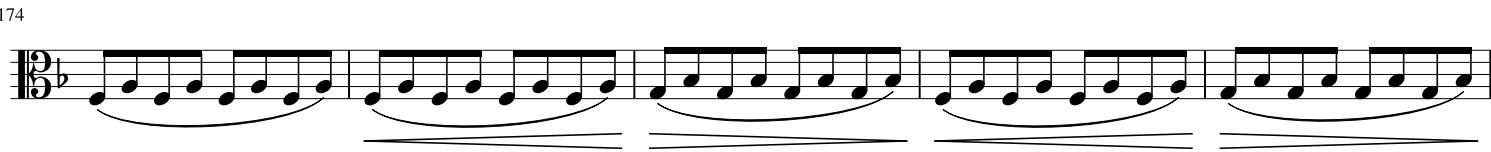
155



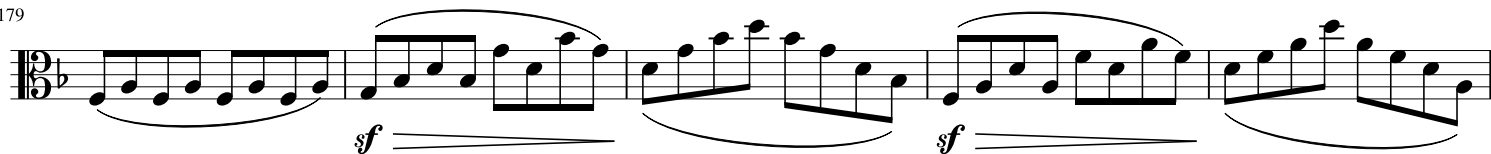
163



174



179



184



188

188-194: Musical staff in bass clef with a key signature of one flat. It contains six measures of music. The first measure starts with a piano (*p*) dynamic. The second measure is marked *pp*. The sixth measure ends with a fortissimo (*sf*) dynamic and a fermata.

195

195-204: Musical staff in bass clef with a key signature of one flat. It contains ten measures of music. The first measure is marked *p*. The tenth measure is marked *f* and ends with a fermata.

205

Ritardando Tempo primo

205-214: Musical staff in bass clef with a key signature of one flat. It contains ten measures of music. The first measure has an accent (>). The second measure has a fermata. The fifth measure is marked *p*. The tempo marking "Ritardando Tempo primo" is placed above the staff between measures 205 and 206.

215

215-225: Musical staff in bass clef with a key signature of one flat. It contains eleven measures of music. The sixth measure is marked *f*. The eleventh measure is marked *f* and ends with a fermata.

226

226-235: Musical staff in bass clef with a key signature of one flat. It contains ten measures of music.

236

236-245: Musical staff in bass clef with a key signature of one flat. It contains ten measures of music. The first measure is a whole rest. The last five measures are marked with increasing dynamics: *f*, *f*, *f*, *f*, and *ff*.