

Stephen W. Beatty

Duet for Bassoon and
Bass Voice, Op.2245

Instrumentation:

Bassoon

Bass voice

Play time: 4' 43"

sdbeatty145@gmail.com

http://imslp.org/wiki/Category:Beatty,_Stephen_W.

Style: American Baroque

Duet for Bassoon and Bass Voice, Op.2245

Stephen W. Beatty (1938)

$\text{♩} = 90$

Bassoon

Bass

f *mf*

AA

4

Bsn.

B.

mp *mf*

7

Bsn.

B.

f *mf*

10

Bsn.

B.

f

13

Bsn.

B.

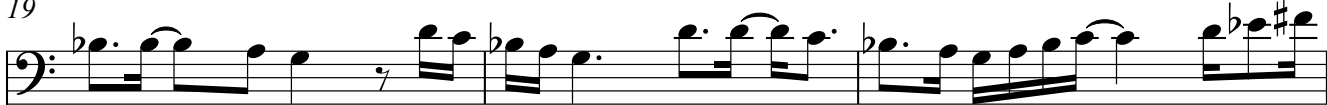
mf *mf*

16


Bsn. 

B. 

19

Bsn. 


f *mp* *mf* *mf* *p*

B. 


22

Bsn. 

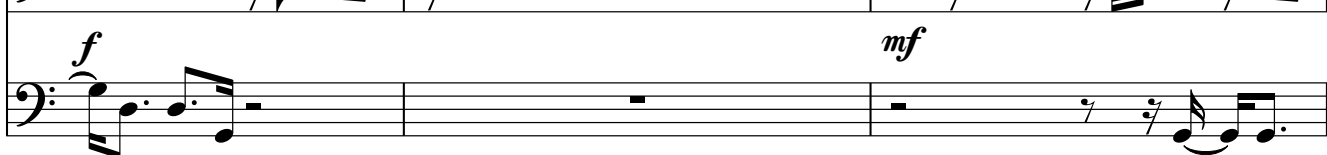
f *mp* *mp*

B. 

25

Bsn. 

f *mf*

B. 


28

Bsn. 


mp

B. 

31

Bsn. 

mp *mf* *mp*

B. 

34

Bsn. *f* *mf*

B. *mf*

Measures 34-36. Bsn. part starts with a forte (*f*) dynamic, then mezzo-forte (*mf*). B. part starts with mezzo-forte (*mf*). Both parts feature eighth and sixteenth note patterns with slurs and ties.

37

Bsn.

B.

Measures 37-39. Bsn. part continues with eighth and sixteenth note patterns. B. part continues with eighth and sixteenth note patterns.

40

Bsn. *f*

B. *p*

Measures 40-42. Bsn. part features a forte (*f*) dynamic. B. part features a piano (*p*) dynamic. Both parts continue with eighth and sixteenth note patterns.

43

Bsn. *mf* *pp*

B. *mf* *pp*

Measures 43-45. Bsn. part features mezzo-forte (*mf*) and pianissimo (*pp*) dynamics. B. part features mezzo-forte (*mf*) and pianissimo (*pp*) dynamics. Both parts continue with eighth and sixteenth note patterns.

46

Bsn. *mf* *mp* *pp*

B. *mf* *mp* *pp*

Measures 46-48. Bsn. part features mezzo-forte (*mf*), mezzo-piano (*mp*), and pianissimo (*pp*) dynamics. B. part features mezzo-forte (*mf*), mezzo-piano (*mp*), and pianissimo (*pp*) dynamics. Both parts continue with eighth and sixteenth note patterns.

49

Bsn.



B.



52

Bsn.

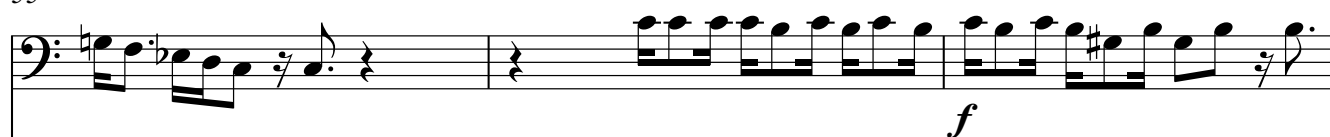


B.

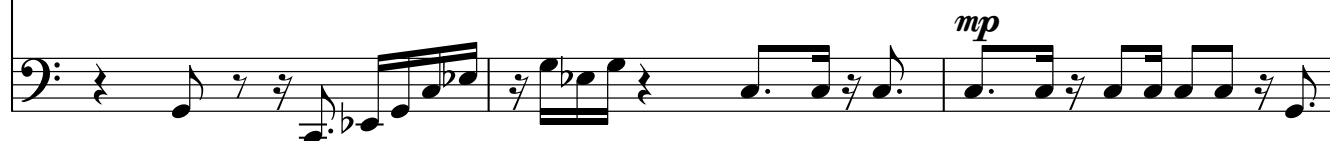


55

Bsn.



B.



58

Bsn.



B.

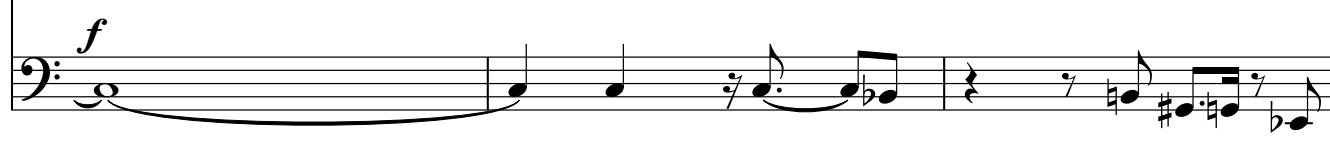


61

Bsn.



B.



64

Bsn. *f* *mf*

B. *mp* *mf*

68

Bsn. *f* *mf*

B. *mp* *pp*

71

Bsn. *mp*

B. *mf* *pp*

74

Bsn. *mf* *f* *mf*

B. *mf*

77

Bsn. *f*

B.

80

Bsn.

B.

mp

Measures 80-82. Bsn. part: 80: eighth-note runs with many sharps; 81: quarter rest, eighth-note; 82: quarter rest, eighth-note. B. part: 80: whole rest; 81: eighth-note runs; 82: quarter note. Dynamics: *mp* at measure 82.

83

Bsn.

B.

mf

mp

Measures 83-85. Bsn. part: 83: quarter rest, eighth-note; 84: eighth-note runs; 85: eighth-note runs. B. part: 83: quarter note, quarter rest; 84: quarter note, quarter rest; 85: quarter note, quarter rest. Dynamics: *mf* at measure 84, *mp* at measure 85.

86

Bsn.

B.

ppp

mf

f

mf

Measures 86-88. Bsn. part: 86: eighth-note runs; 87: eighth-note runs; 88: eighth-note runs. B. part: 86: quarter note, quarter rest; 87: quarter note, quarter rest; 88: quarter note, quarter rest. Dynamics: *ppp* at measure 86, *mf* at measure 87, *f* at measure 88, *mf* at measure 88.

89

Bsn.

B.

ff

mf

mp

Measures 89-91. Bsn. part: 89: eighth-note runs; 90: eighth-note runs; 91: eighth-note runs. B. part: 89: quarter note, quarter rest; 90: quarter note, quarter rest; 91: quarter note, quarter rest. Dynamics: *ff* at measure 89, *mf* at measure 90, *mp* at measure 91.

92

Bsn.

B.

mf

Measures 92-94. Bsn. part: 92: eighth-note runs; 93: eighth-note runs; 94: eighth-note runs. B. part: 92: quarter note, quarter rest; 93: quarter note, quarter rest; 94: quarter note, quarter rest. Dynamics: *mf* at measure 93.

95

Bsn.

B.

mp

mp

mf

Measures 95-97. Bsn. part: 95: eighth-note runs; 96: eighth-note runs; 97: eighth-note runs. B. part: 95: quarter note, quarter rest; 96: quarter note, quarter rest; 97: quarter note, quarter rest. Dynamics: *mp* at measure 95, *mp* at measure 96, *mf* at measure 97.

98

Bsn.

B.

mf *mp* *f*

101

Bsn.

B.

mf *p*

104

Bsn.

B.

f *mp*

106

Bsn.

B.

mf *mf*