

Neu gesetzte Stimme zu
CV 40.614 und BA 4858
(*NMA I/1 Band 1, N°. 2 BA 4547*)

Missa solemnis in c

Trombone II · Tenore

KV 139 . "Waisenhausmesse"

Kyrie

Wolfgang A. Mozart
MDCCLVI - MDCCXCI

Adagio

Adagio

12/8

f

VI I

5

VI.

f

VI.

10

VI.

13

Allegro

Ob.

15

8

VI I+II

23

+Ob., Trp.

f

28

1

fp

34

4

38

f

p

44

f

50

56

7

63

Archi + Ob.

f

67

1

fp

4

76



83



90



98

**Andante**

(Fine)

Chri - ste e - lei - son.

(dal Segno al Fine)

Kyrie **Allegro** (T. 13) da capo**Gloria****Allegro**

6



12



18

**Andante**

VI I 24



A solo

S solo

Nachspiel
ohne Soli

68 (VI I) **Adagio**
f

73 **Vivace**
Trb. I

78

83 **Andante**
VI I 5 91 10 101 12 113 26
T solo B solo T solo

139 **Adagio**
VII f

144

150

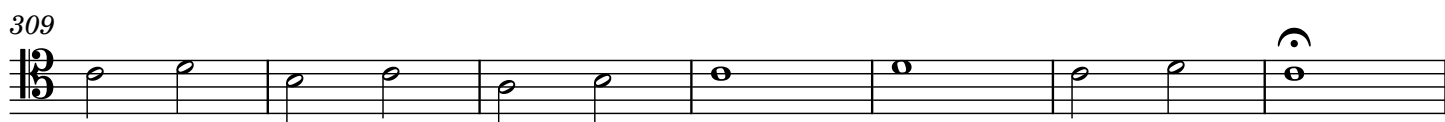
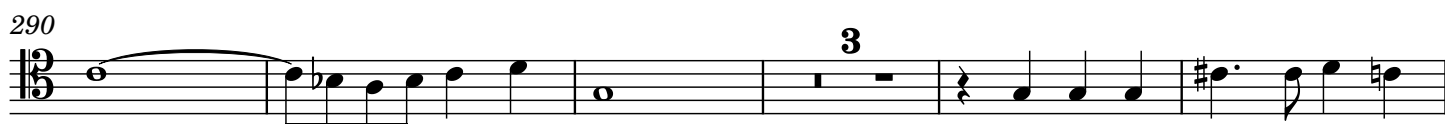
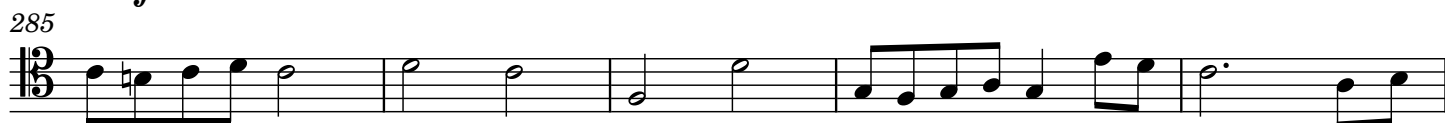
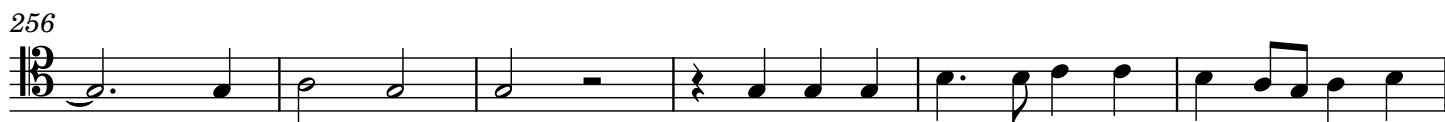
156

161

166 **Allegro**
VI I 6 174 35 209 35
S solo S solo

244 **Allegro**

Trb. III



328



334



Allegro

Credo

$$f$$

7



13

2

16



21



27



33

1



39



45



51



56



62

8



Andante

75 S solo

18 95 20 VI I

Et in - car - na - tus est de S, A soli

Adagio

116 Trp. a 4 con sord.

fp Trp. *fp* Trp. *fp*

120

fp *fp* Trp. *fp*

124

p

128 **Allegro** S solo

Et re - sur - re - - - - - (-xit)

132

f

137

143

148

2

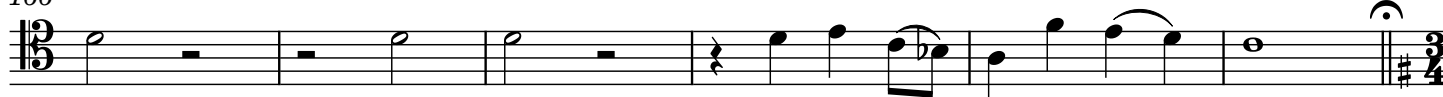
154

Adagio **Allegro**

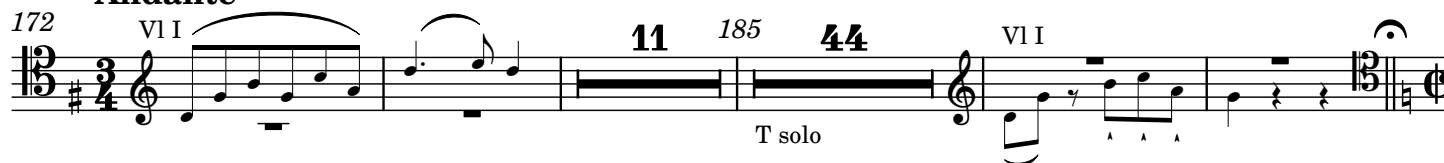
160



166

**Andante**

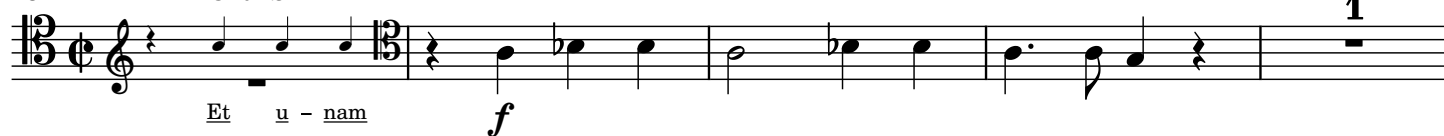
172



231

Allegro

Chor S



236



241



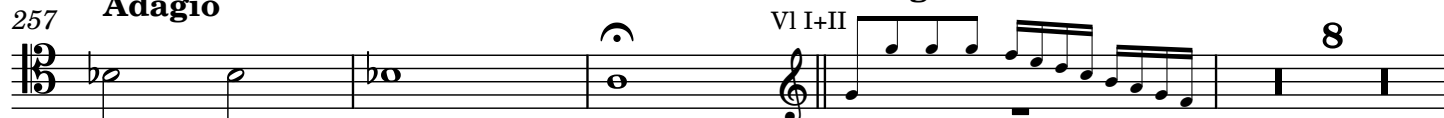
248

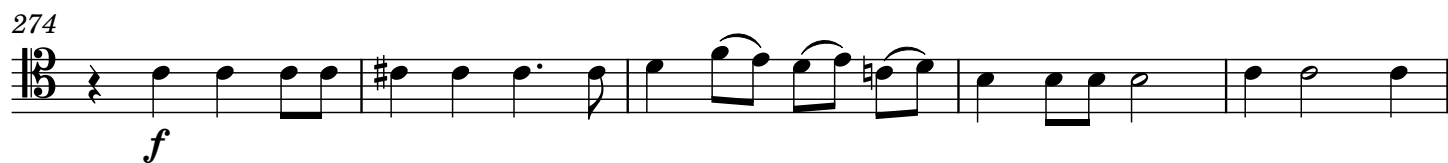
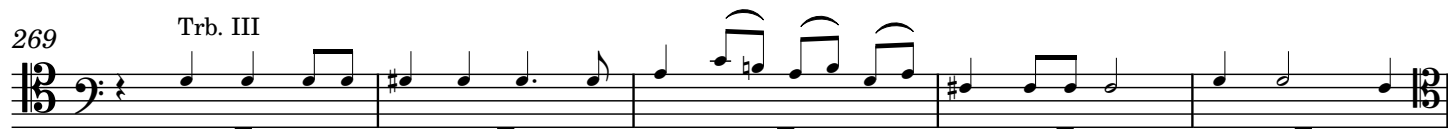


253



257

Adagio**Allegro**



325

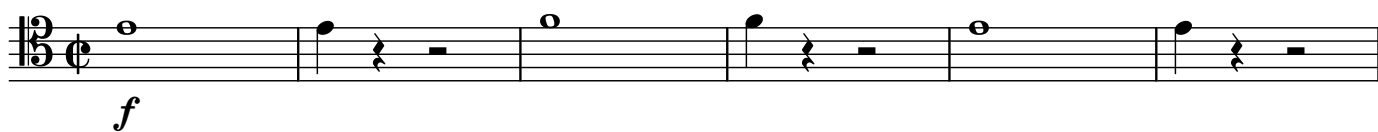


331



Adagio

Sanctus



7



13

Allegro



19



26



34

Trb. I



40



26

f

32

38

45

p **Allegro** VI I+II

56

f

67

75

83

p

94

102

109

118

p

Notizen