

Stephen W. Beatty

Duet for Alto Trombone and
Violin in C major, Op.2544

Instrumentation:

Alto Trombone

Violin

Play time: 5' 58"

sdbeatty145@gmail.com

http://imslp.org/wiki/Category:Beatty,_Stephen_W.

Style: American Baroque

Duet for Alto Trombone and Violin in C major, Op.2544

Stephen W. Beatty (1938)

♩ = 95

Alto Trombone

Violin

A. Tbn.

Vln.

A. Tbn.

Vln.

A. Tbn.

Vln.

A. Tbn.

Vln.

16

A. Tbn.

Vln.

*pp**mp*

19

A. Tbn.

Vln.

*mf**f**mf*

22

A. Tbn.

Vln.

*f**mf*

25

A. Tbn.

Vln.

28

A. Tbn.

Vln.

*mp**mf**mp**mp*

31

A. Tbn.



Vln.

*mf**f**mf*

34

A. Tbn.  
Vln.  *f*


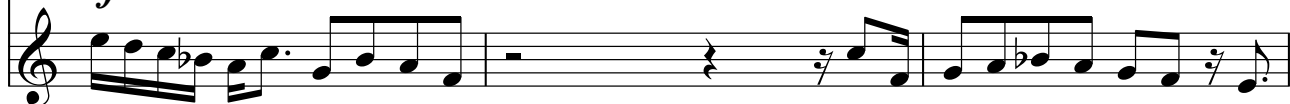
37

A. Tbn.  *mf*
Vln.  *mp* *mf*

40

A. Tbn.  *ff*
Vln. 

43

A. Tbn.  *mf*
Vln. 

46

A. Tbn.  *mp* *mf*
Vln. 

49

A. Tbn.  *p* *pp*
Vln.  *f* *mf*

52

A. Tbn.



Vln.

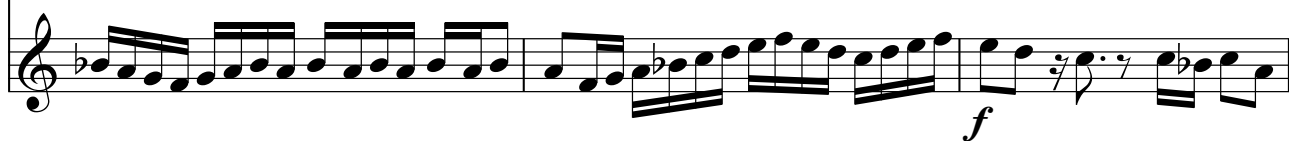


55

A. Tbn.



Vln.



58

A. Tbn.



Vln.



61

A. Tbn.



Vln.



64

A. Tbn.



Vln.



67

A. Tbn.



Vln.



70

A. Tbn.

p *ppp* *mf*

Vln.

mp

73

A. Tbn.

Vln.

pp

pp

77

A. Tbn.

Vln.

81

A. Tbn.

Vln.

ff *mf*

84

A. Tbn.

pp *mf* *mp*

Vln.

The image shows a musical score for two instruments: A. Tbn. (Alto Trombone) and Vln. (Violin). The A. Tbn. part is written in bass clef and the Vln. part is written in treble clef. The A. Tbn. part has dynamics *pp*, *mf*, and *mp* marked. The Vln. part has a key signature of one sharp (F#) and a time signature of 4/4. The Vln. part has a dynamic of *pp* marked.

87

[illegible]

91

A. Tbn. *pp* *mf* *pp*

Vln.

95

A. Tbn. *mp* *pp*

Vln. *p* *mf*

98

A. Tbn. *p* *mf* *p*

Vln. *mp*

101

A. Tbn. *mp* *p*

Vln. *mf* *mp*

105

A. Tbn. *mf*

Vln. *mf* *f*

108

A. Tbn. *mp*

Vln.

111

A. Tbn. *mf* *mp*

Vln. *mf* *f* *mf*

114

A. Tbn. *mf*

Vln. *f*

117

A. Tbn. *pp* *mf*

Vln. *mp* *mf*

120

A. Tbn. *f*

Vln. *f*

123

A. Tbn. *mf*

Vln. *mf*

126

A. Tbn. *mp* *mf*

Vln. *f*

129

A. Tbn. *pp*

Vln. *mp*

Double bar line

132

A. Tbn. *mp* *p* *pp*

Vln. *mf*

Double bar line

135

A. Tbn. *mf*

Vln. *f*

Double bar line

138

A. Tbn. *mp*

Vln.

Double bar line

140

A. Tbn. *mf* *mp*

Vln. *mf* *f* *mp*

Double bar line