

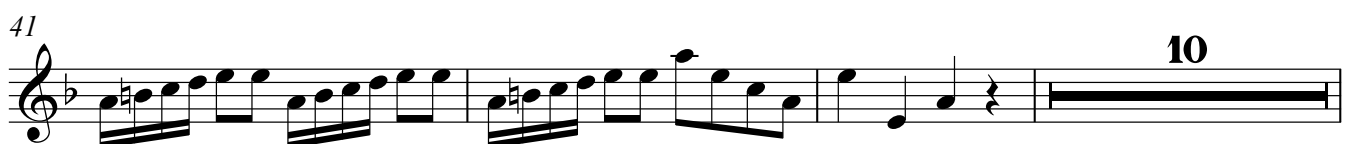
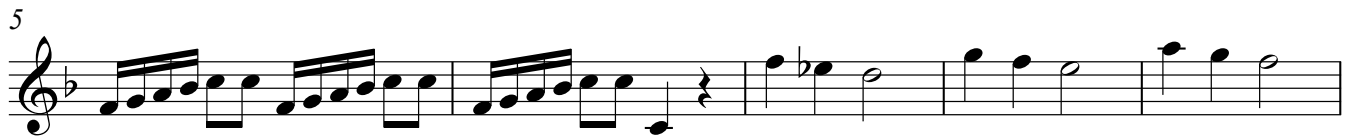
Concerto Del S. D. Anto. Vivaldi

(RV 99)

Violino

Manuscript I-Tn , Giordano 31, Bl. 357-363)

Allegro



10

54



57



60



64



79



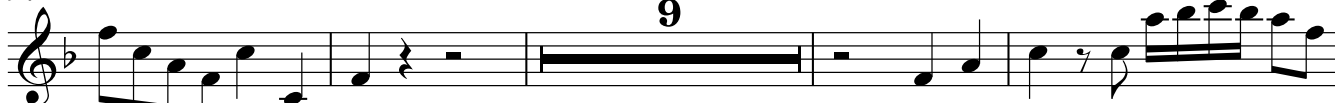
84



89



94



107



111

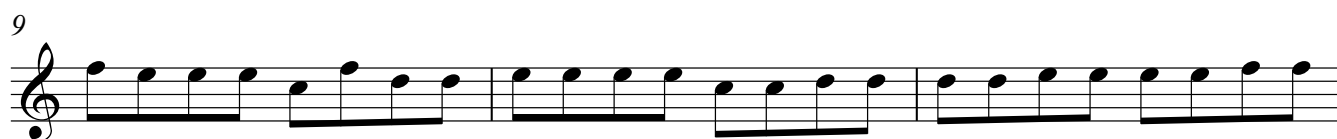


116



Violino

Largo



Violino

Allegro

8

16

38

45

58

73

79

94

116

16

7

9

10

18

3

3

126

2

135

140

This musical score for Violino consists of three staves. The first staff (measures 126-134) begins with a treble clef and a key signature of one flat (B-flat). It features a series of eighth-note runs, a quarter rest, and a double bar line with a '2' above it. The second staff (measures 135-139) continues the eighth-note runs. The third staff (measures 140-144) starts with a quarter rest, followed by more eighth-note runs, and ends with a half note and a fermata.