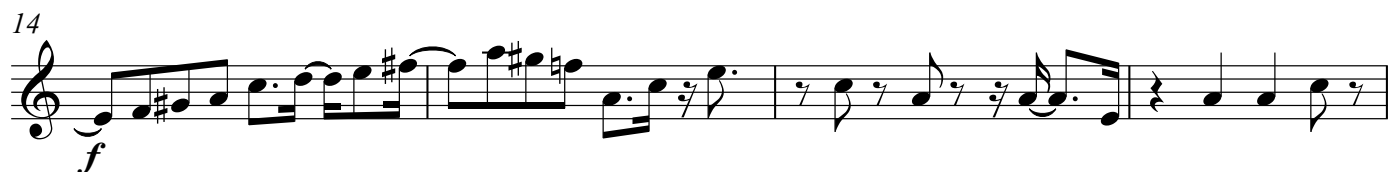


Cornett

Duet for Cornett and Soprano, Op.2283

Stephen W. Beatty (1938)

♩ = 90



40 *mp* *mf*

45 *mp*

49 *mf* *mp*

53 *mf*

58 *mp* *mf*

62 *mp* *pp* *mf*

67 *mp*

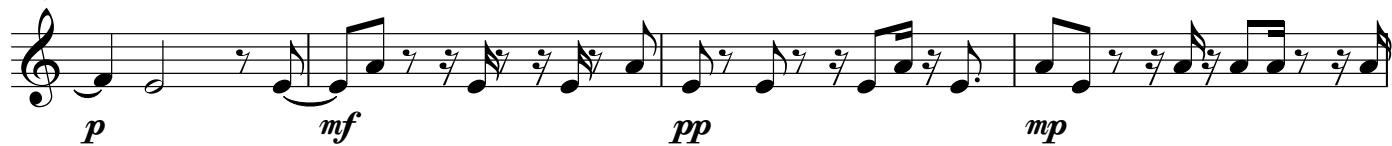
71 *p* *mp* *mf*

75 *mp* *f*

80 *mp* *mf* *mp*

This musical score for Cornett spans measures 40 to 80. The notation is in treble clef with a key signature of one sharp (F#). The score consists of nine staves of music. Measure numbers are placed at the beginning of each staff. Dynamic markings are placed below the notes: *mp* (mezzo-piano), *mf* (mezzo-forte), *p* (piano), *pp* (pianissimo), and *f* (forte). The music features a variety of rhythmic patterns, including eighth and sixteenth notes, often beamed together, and rests. The overall texture is melodic and rhythmic, typical of a cornett part in a Renaissance or Baroque ensemble.

127



131



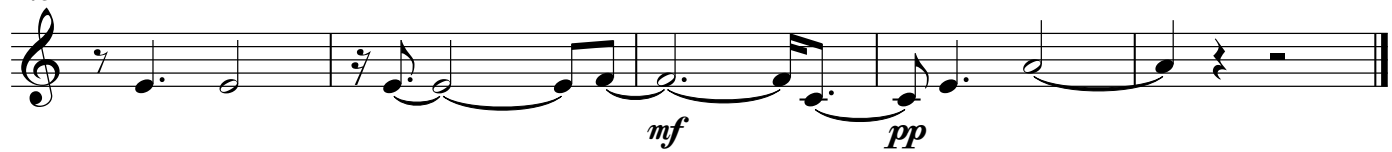
135



139



143



Duet for Cornett and Soprano, Op.2283

Soprano

Stephen W. Beatty (1938)

f ♩ = 90

AA

4

mf

7

f

12

mp

17

f

22

mf *f* *mf*

26

mp

30

mf *mp* *mf*

34

pp *mf*

38 *f* *mf*

42 *pp* *mf*

46 *mp* *mf* *f*

50 *mf*

54 *mp*

58 *mf*

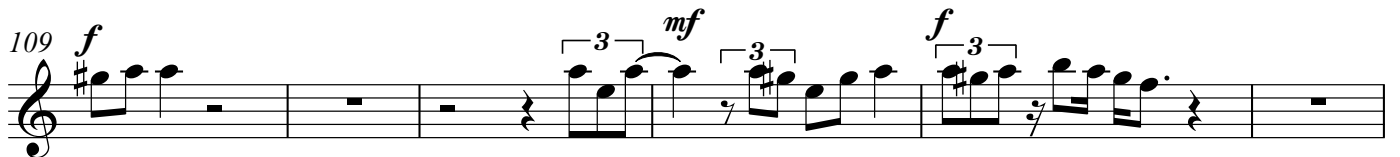
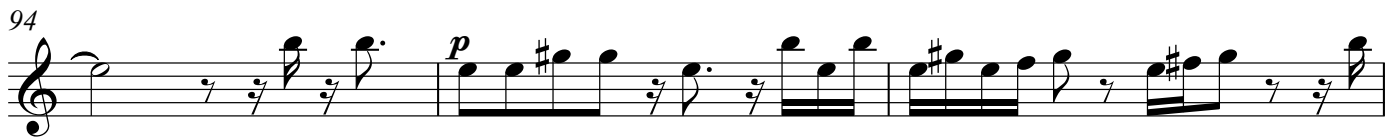
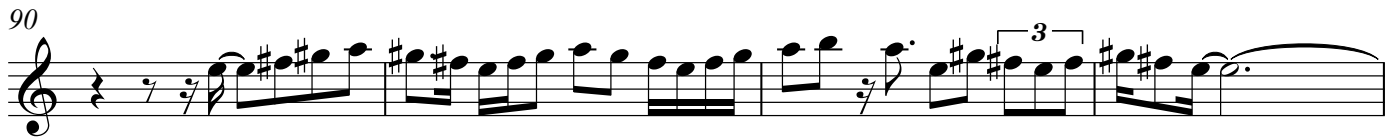
61

65

69

73

This musical score for Soprano consists of nine staves of music, numbered 38 to 73. The notation is in treble clef with a key signature of one flat (B-flat). The music features a variety of dynamic markings: *f* (forte), *mf* (mezzo-forte), *pp* (pianissimo), *mp* (mezzo-piano), and *f* (forte). The melodic lines are primarily eighth and sixteenth notes, often beamed together in groups. There are several triplet markings (indicated by a '3' over a bracket) in measures 54, 58, and 61. The score includes various rests, including whole, half, and quarter rests, as well as slurs and ties. The overall texture is melodic and rhythmic, typical of a vocal line in a contemporary or classical setting.



Soprano

