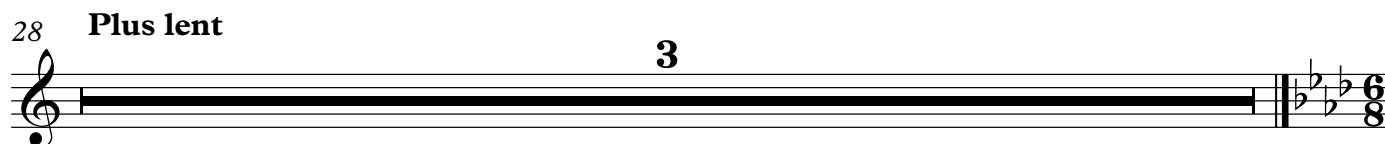
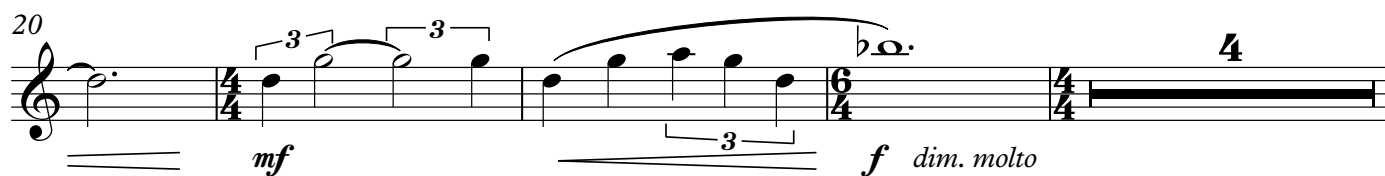
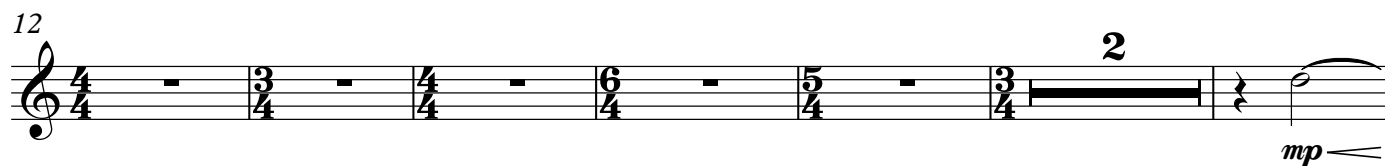
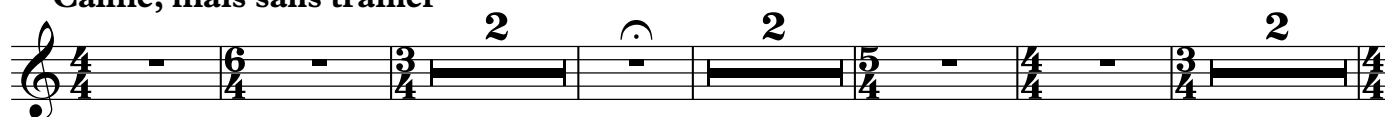


Piccolo

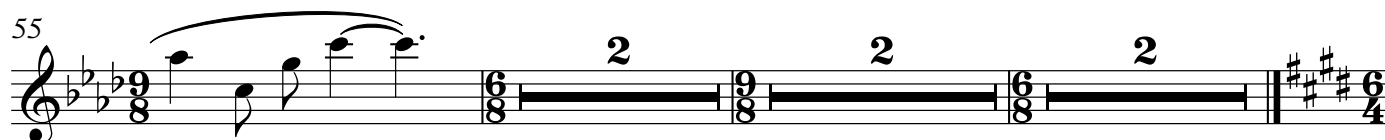
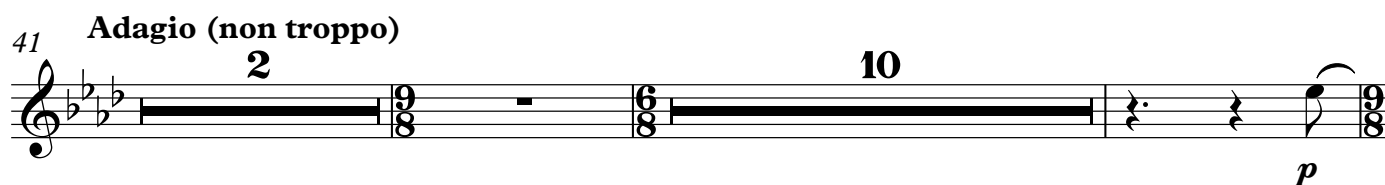
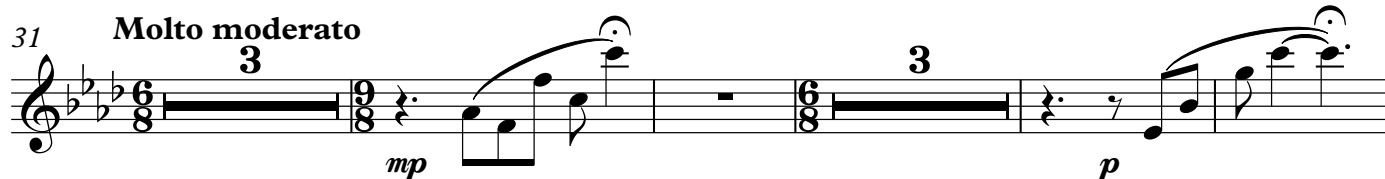
Paysages et marines

1. Sur la Falaise

Calme, mais sans trainer

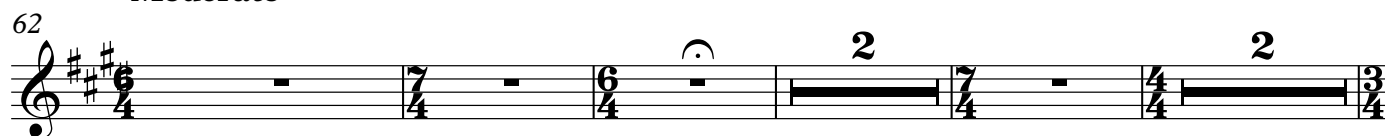


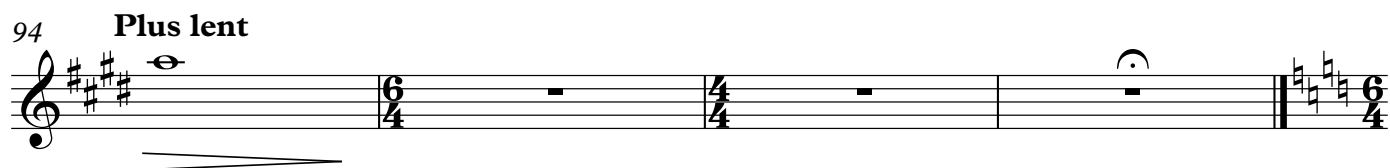
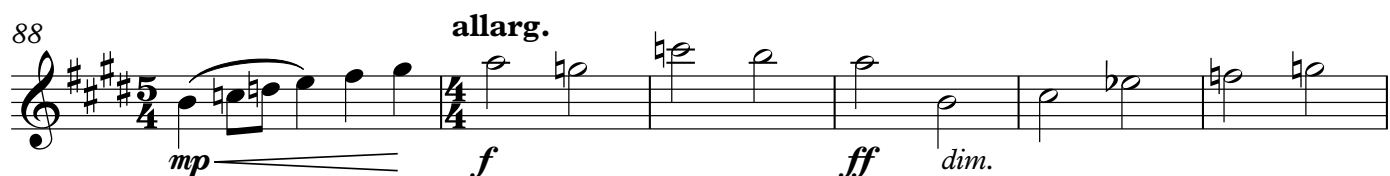
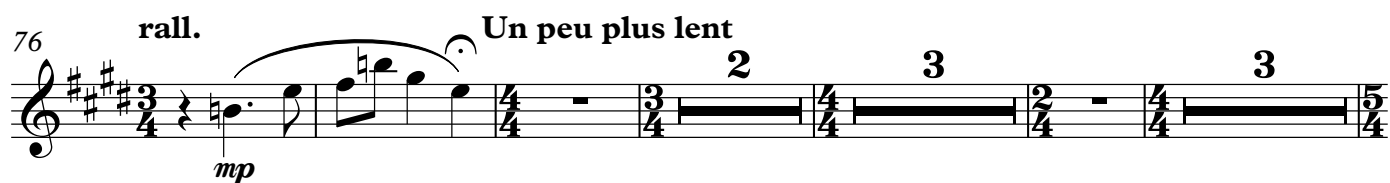
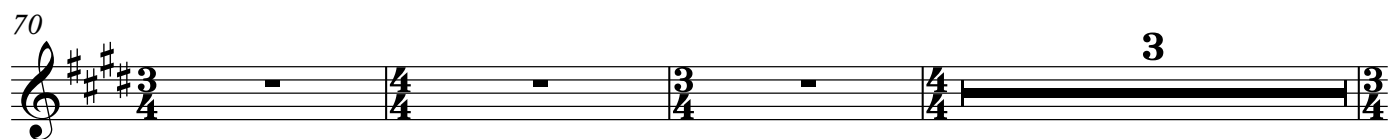
2. Matin Calme



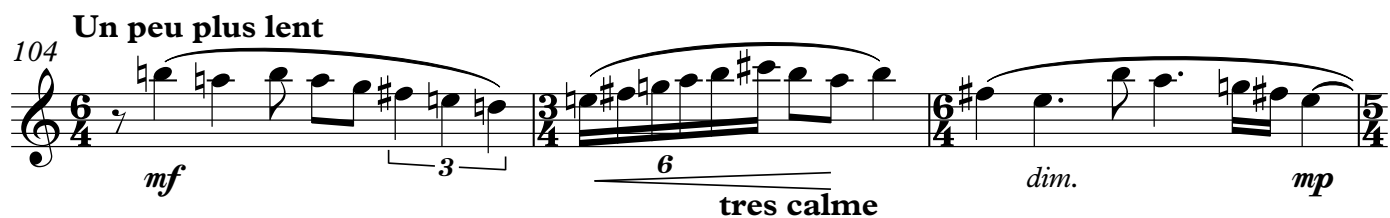
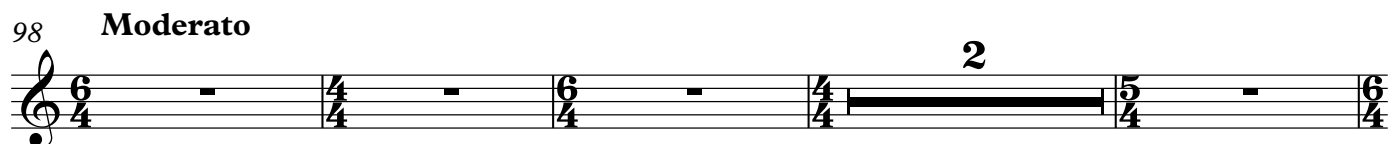
3. Promenade vers la Mer

Moderato





4. Le Chant du Chevrier



112

f *dim. mf* *mp* *dim.*

114

p

5. Soir d'Ete

116 **Tres calme et presque adagio**

134

mf *f* *3* *f*

139

p

147 **Enserrant le Mouvt. (♩=♩) rall.**

6. Ceux qui s'en vont Pecher au Large, dans la Nuit

151 **Largement (♩=60)**

4

Piccolo

164

2 7

p

177

pp 3

181

A tempo

2

190

Plus lent rall.

Plus lent encore

2

7. Soir d'Angoisses

196

Non troppo adagio (♩=54)

TACET

8. La Chanson des Pommiers en Fleurs

206

Allegro moderato

TACET

9. Paysage d'Octobre

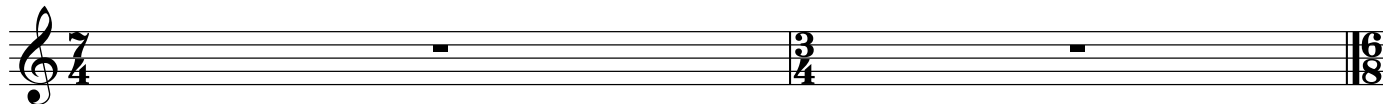
233 **Adagio** (♩=76)

mp *f* *p* *rall.*

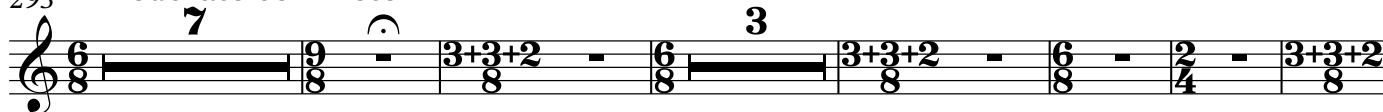
10. Chant de Pecheurs

256 **Moderato**

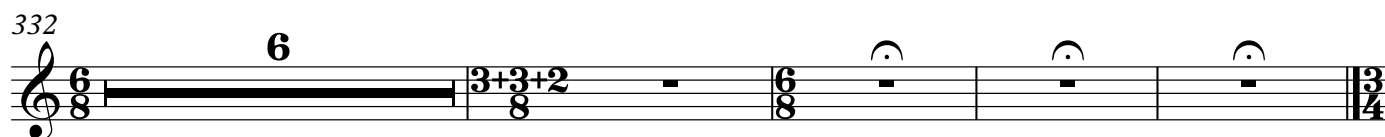
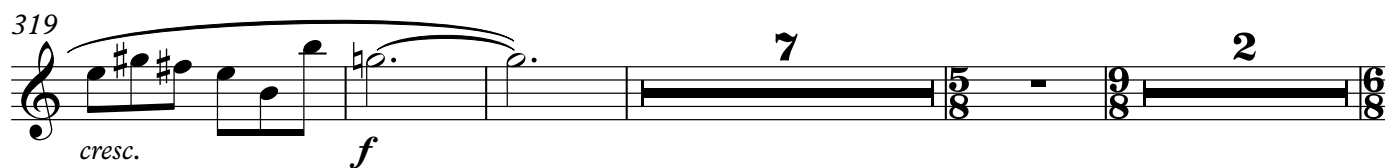
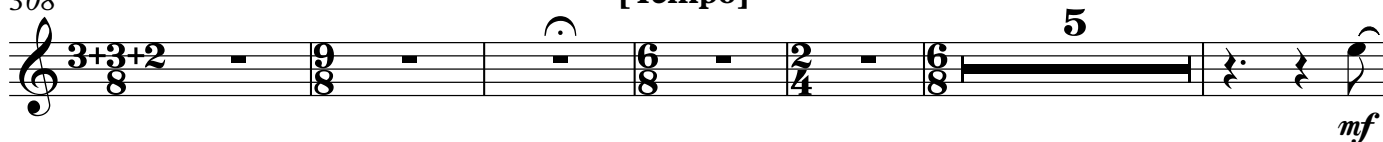
mp *mf* *f* *ff* *p subito e cresc. molto* *f cresc.* *ff dim. molto*

291 **rall.**

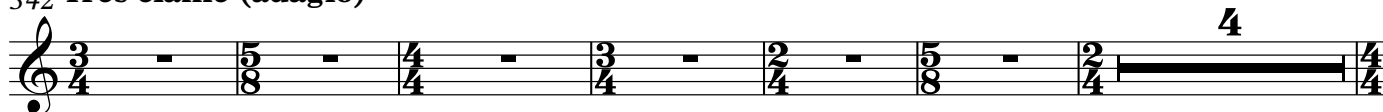
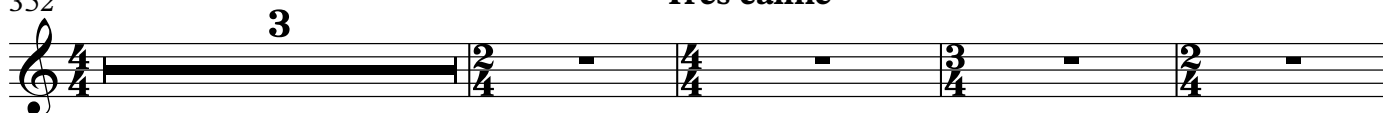
11. Dans les Grands Champs

293 **Moderato con moto**

308 [Tempo]



12. Poeme Virgilien

342 **Tres calme (adagio)**352 **Tres calme**359 **encor plus calme serrez un peu A tempo**

Piccolo

7

375

Bien calme

2

2



Flute

Paysages et marines

1. Sur la Falaise

Calme, mais sans trainer

mp

8 mp

15 mp cresc. 3 mp

21 mf 3 f dim. molto p 2

28 Plus lent p

Detailed description: This block contains the first system of music for '1. Sur la Falaise'. It consists of five staves of music. The first staff starts with a treble clef, a key signature of one flat (B-flat), and a 4/4 time signature. It contains a melody with a triplet of eighth notes. The second staff continues the melody with various time signature changes (5/4, 4/4, 3/4, 4/4, 3/4, 4/4, 6/4). The third staff features a crescendo and a triplet. The fourth staff includes a triplet, a forte (f) dynamic, a decrescendo, and a piano (p) dynamic. The fifth staff begins with the tempo change 'Plus lent' and a piano (p) dynamic, ending with a double bar line and a key signature change to two flats (B-flat, E-flat).

2. Matin Calme

31 Molto moderato 3 p

39 Adagio (non troppo) 2 4 pp

48 p 2

Detailed description: This block contains the second system of music for '2. Matin Calme'. It consists of three staves of music. The first staff starts with a treble clef, a key signature of two flats (B-flat, E-flat), and a 6/8 time signature. It includes a triplet and a piano (p) dynamic. The second staff begins with the tempo change 'Adagio (non troppo)' and features a piano-piano (pp) dynamic. The third staff continues the melody with a piano (p) dynamic and ends with a double bar line and a 2-measure rest.

Flute

54

p

59

p

3. Promenade vers la Mer

Moderato

62

mp

70

mp

76

rall. *Un peu plus lent*

mp

87

allarg.

mp *f* *ff* *dim.*

92

Plus lent

mp

4. Le Chant du Chevrier

98 **Moderato**

p 5 3

100 3 *p* *mp* 9 *mf*

103 **Un peu plus lent** *mp* 3

108 **tres calme Tempo I (le double plus vite)** 2 *pp* *ppp*

5. Soir d'Ete

116 **Tres calme et presque adagio** 3 5 6

133 *mf* *f* 3 *f* 3 *mp*

138 3 *p*

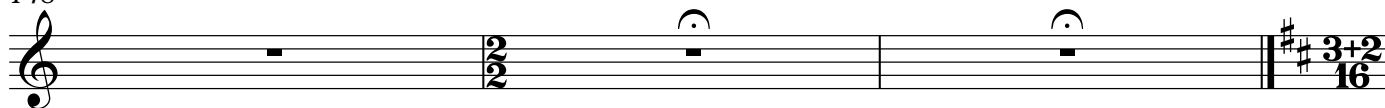
143 **Enserrant le Mouvt. (♩=♩)** 2

4

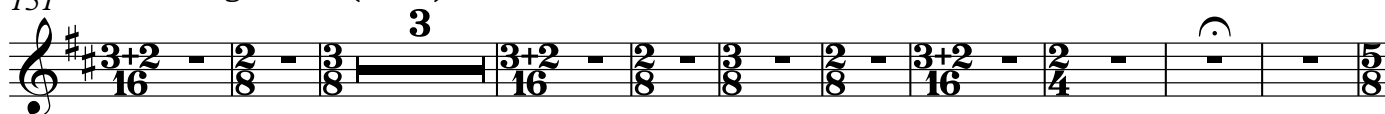
rall.

Flute

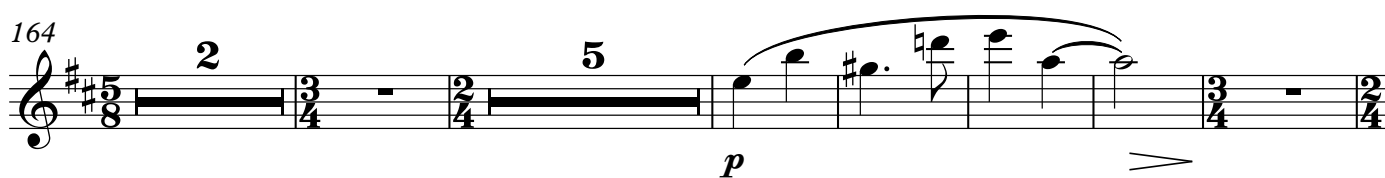
148



6. Ceux qui s'en vont Pecher au Large, dans la Nuit

151 **Largement** (♩=60)

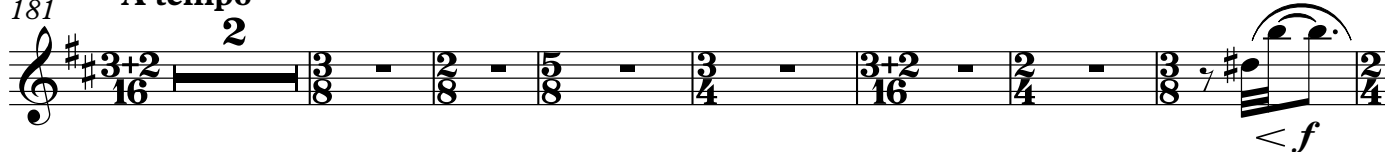
164



177



181

A tempo

190

Plus lent**rall.****Plus lent encore**

7. Soir d'Angoisses

196

Non troppo adagio (♩=54)**TACET**

8. La Chanson des Pommiers en Fleurs

206 **Allegro moderato**

211

215

223

mp

p

9. Paysage d'Octobre

233 **Adagio** (♩=76)

238

245

253 **rall.**

mp

f *dim.* *p*

10. Chant de Pêcheurs

256 **Moderato**
7 2

mp cresc.

270

mf *mp* *cresc.*

276

mf *cresc.*

280

f *ff* *p subito e cresc. molto* *f cresc.*

283

ff dim. molto

290

p *rall.* *smorzando*

Tres calme