

Piano Quartet No. 2 in E-Flat Major

Timpani

1. Allegro

Wolfgang Amadeus Mozart

Joshua Choe

Allegro

f

5

9

f

20

f

27

29

p

29

89

p

f

94

2

22

f

122

18

ff

p

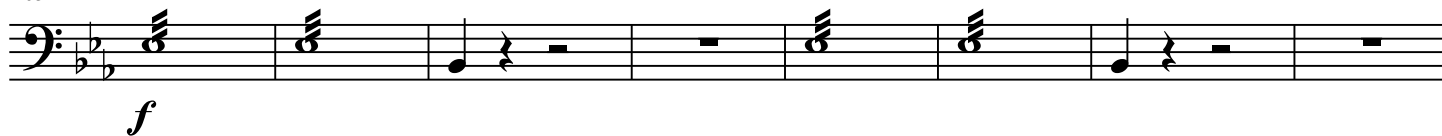
145

f

150



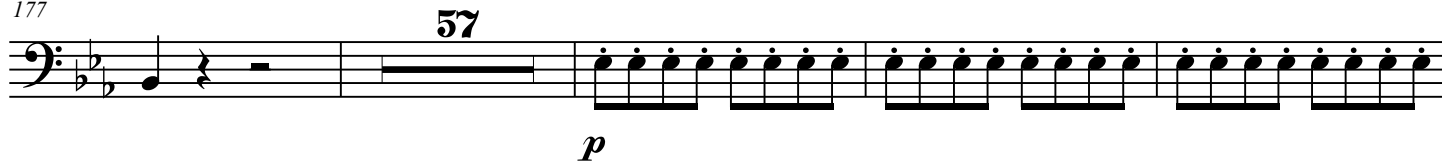
163



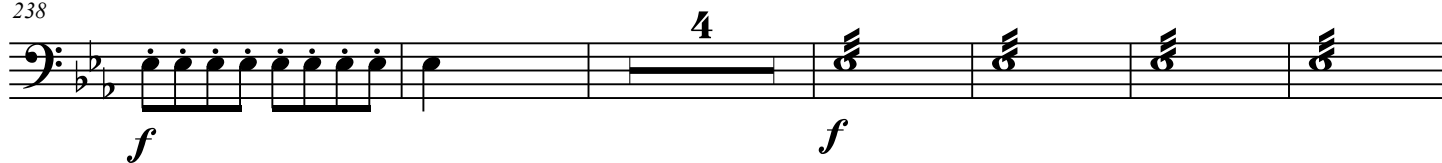
171



177



238



248



Piano Quartet No. 2 in E-Flat Major

Timpani

3. Allegretto

Wolfgang Amadeus Mozart

Joshua Choe

Allegretto

8

f

13

41

f

59

64

2

72

14

pp

cresc.

mf

93

f

99

23

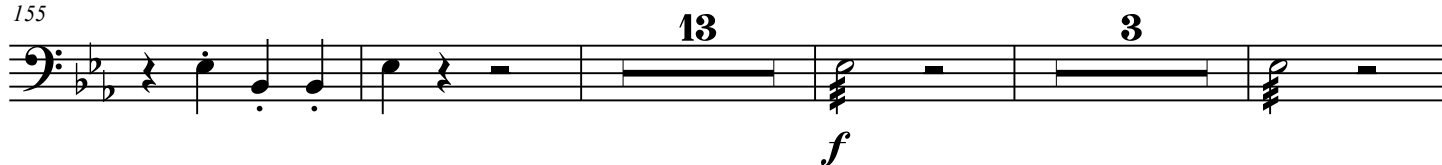
f

23

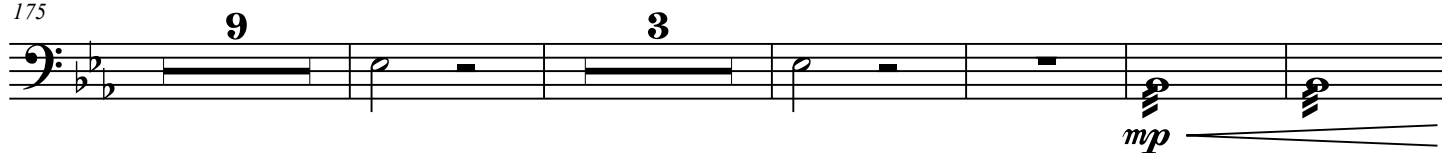
149

f

155



175



192



201



243



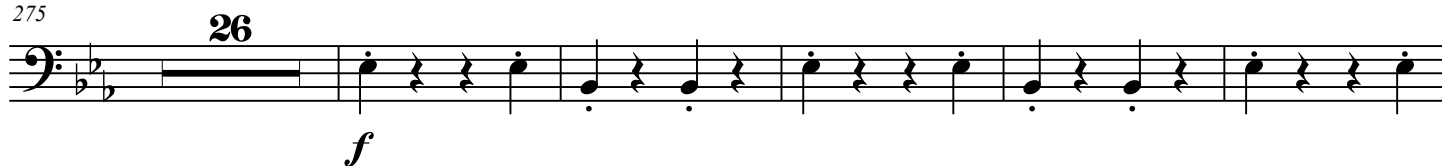
250



269



275



3

334

31

2

372

f *p* *p* *p* *pp* *pp*

The bass line is written on a single staff in bass clef with a key signature of two flats (B-flat and E-flat). It consists of six measures, each containing a half note followed by a quarter rest. The notes are G2, F2, E2, D2, C2, and B1, which correspond to the lyrics 'The', 'rose', 'tree', 'grew', 'up', 'in', 'a', 'house'.

390

3

f

397

11

f

The first measure of the bass line in the key of B-flat major. It begins with a bass clef and a key signature of two flats (B-flat and E-flat). The melody consists of a half note B-flat, followed by a quarter rest, a half note E-flat, a quarter rest, and a final double bar line. The staff is empty for the remainder of the measure.