

Tamás Beischer-Matyó

Concerto stilizzato

paraphrase on a motif by Brahms

8 cellos

8 cellos

Concerto stilizzato

paraphrase on a motif by Brahms

PARTE PRIMA: "CADENZA"

Adagio $\text{♩} = 60$ Cadenza Tamás Beischer-Matyó

22

3 3 3 3 3 3

ppp

25 30

3 3 3 3 3 3 2

ff

PARTE SECONDA: "FORMA-SONATA"

poco rall. . . . Poco sostenuto Allegro con brio $\text{♩} = 180$ ($\text{♩} = 60$) (unis.)

4

ff

40 45

2 pizz. 3

pp *p* *mf*

50 55

3 col legno

f

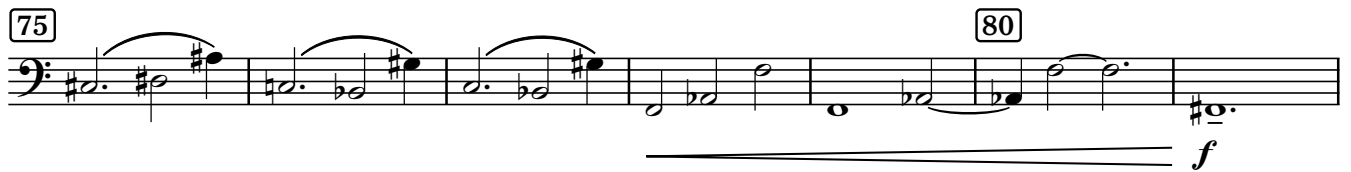
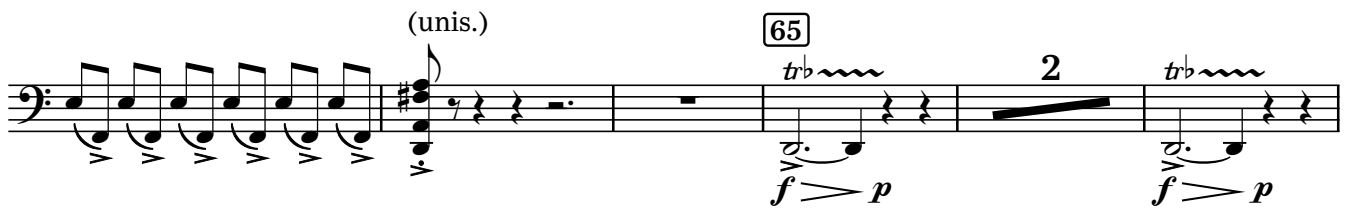
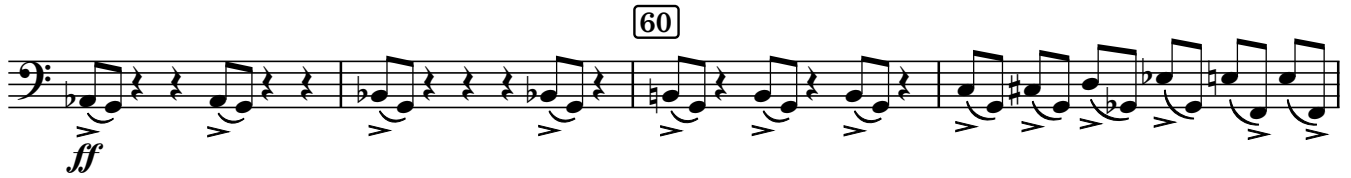
ord.

f

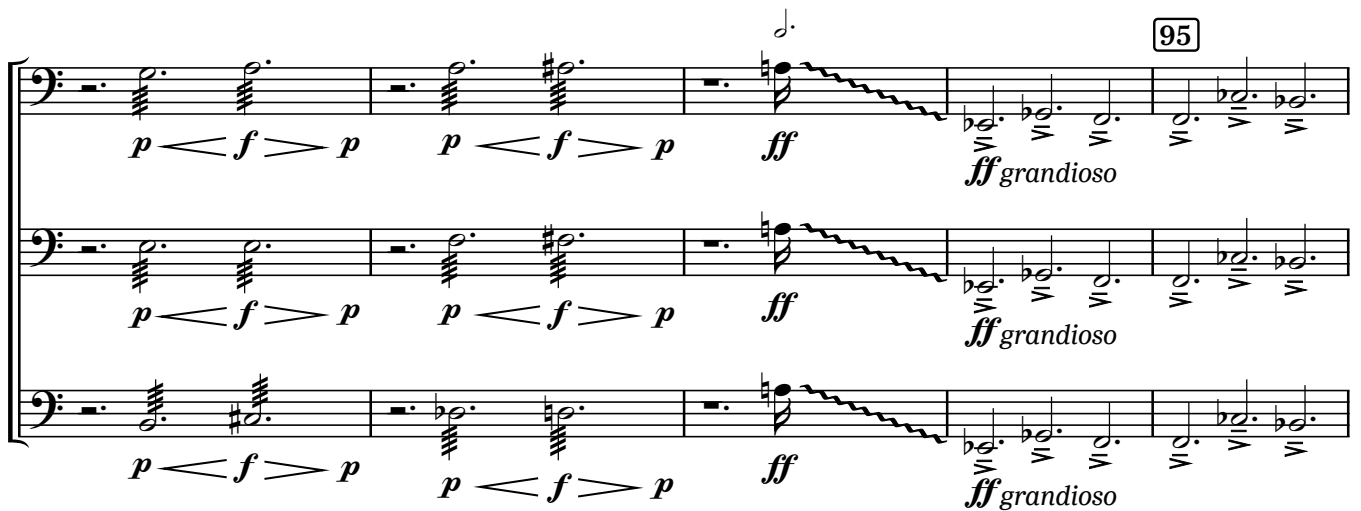
Copyright Tamás Beischer-Matyó, 1996

www.beischermatyó.hu/concerto_stilizzato

This work is licensed under the Creative Commons Attribution-NonCommercial-NoDerivatives 4.0 International License.
To view a copy of this license, visit www.creativecommons.org/licenses/by-nc-nd/4.0/



poco ritard. Sostenuto $\text{♩} = 48$ ($\text{♩} = 144$)



allarg. - - - - - a tempo $\text{♩} = 60$ ($\text{♩} = 180$)



col legno 105 c. l.

f *f*

poco ritard. a tempo poco ritard. a tempo 110

ord. *f* *ff* *pp*

(unis.) col legno 115 ord.

f *f*

120

f espress. 3

(unis.) 125

ff 3 3

130

8 Picc., Vln. *f* espress. *fff* *pp*

molto rall. a tempo

135 3 140

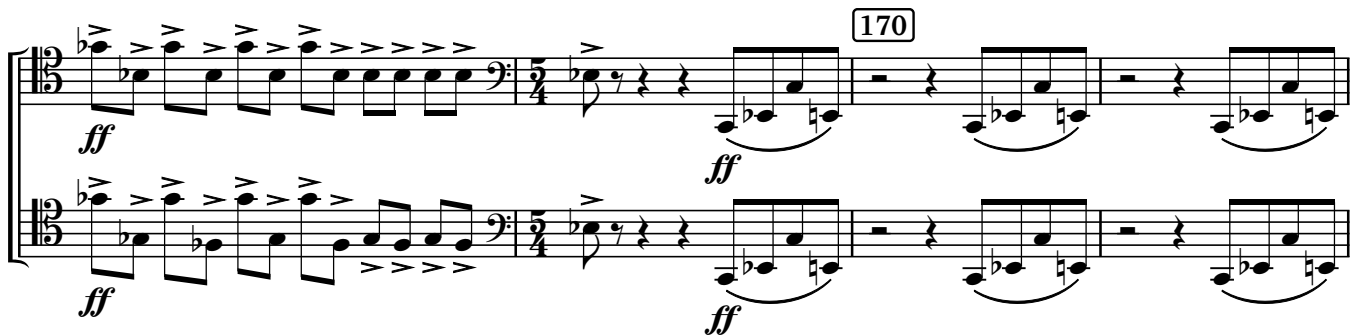
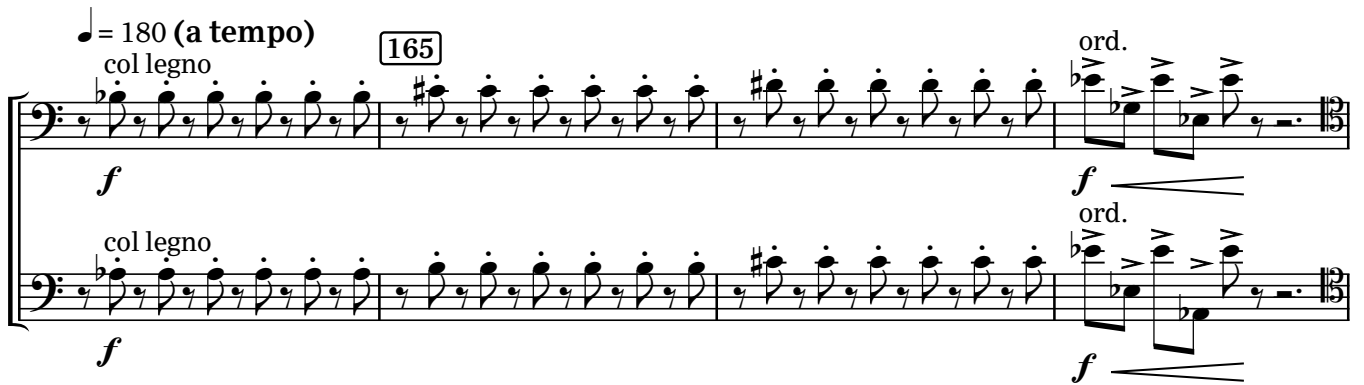
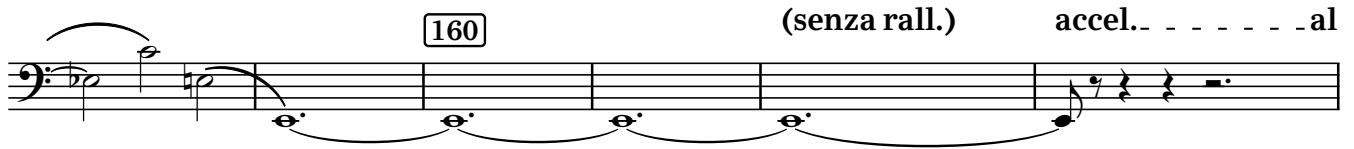
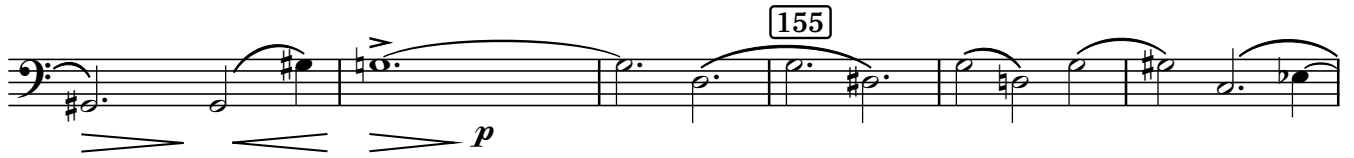
ff *p*

145

f 3

rall. Meno allegro ♩ = 120 150

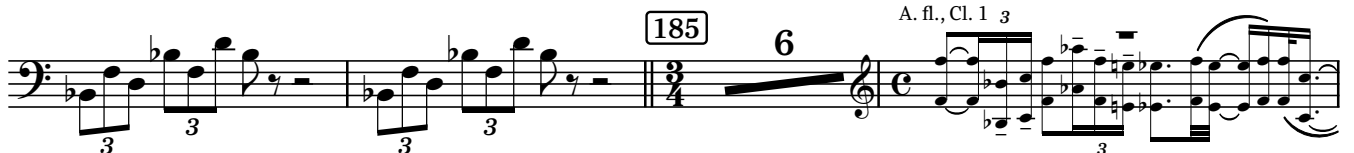
p espressivo



PARTE TERZA: "LIED"

subito **Adagio molto** ♩ = 60 (♩ = ♩)

A. fl., Cl. 1 3



allargando

205 lunga *ppp* *cresc. molto*

S. pno. *f* *p* *f* *p*

p *ppp* *cresc. molto*

a tempo

210 *fff* *ppp*

molto rall. più adagio e molto flessibile ♩ = 48

poco a poco allarg. - -

220 Hp.

a tempo (♩ = 48)

rall. - - - -

PARTE QUARTA: "RONDÒ"

Allegro vivace ♩ = 180 (♩ = 90)

p

225

230 *cresc.* *f* 235

poco rall. - - a tempo

240 *f* *mf* *sf* *sf*

rall. - - - a tempo

245 2

sul pont.

250 (sul pont.)

sf *ff* *ff*

pizz.

255

mf *f* *mf*

arco

260

ff

harm. gliss. on III

265

p

ord. gliss. on II

270

ff

pizz.

p

275 4

3 S. pno.

290

p marcato

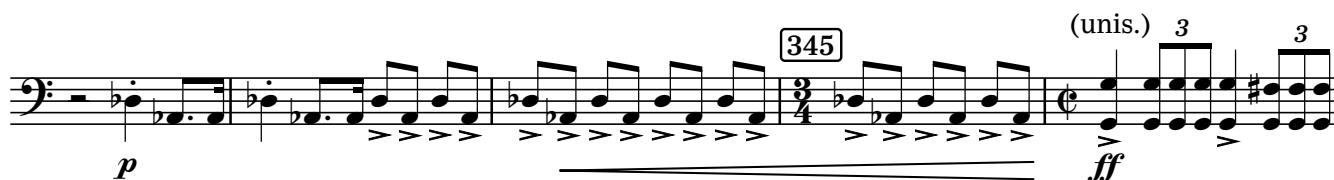
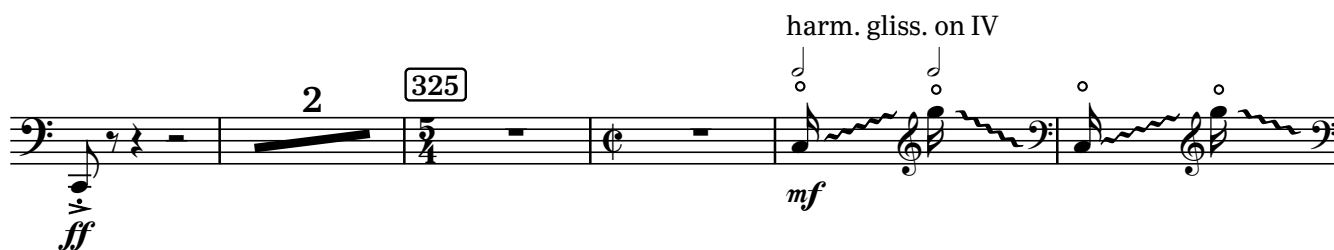
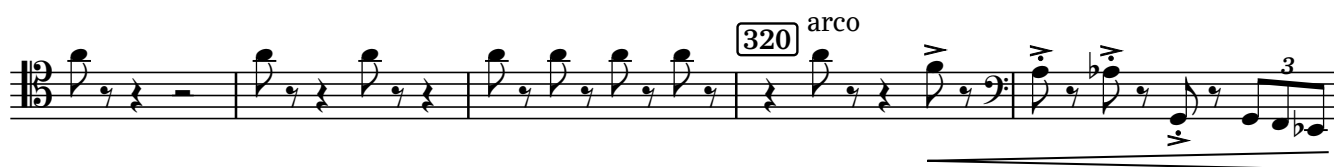
295 poco ritard. - - -

a tempo

arco



rall. ----- Meno vivace ♩ = 144



rall. Allegro vivace ♩ = 180

[350] [1] [2]

sffz *ppp*

[3] [4] [5] [355] [6] [7] [8] [9] [10]

[360] [11] [12] [13] [14] [15] [365] [16] [17] [18]

[370]

f

[375]

[380] poco rall. . . Sostenuto ♩ = 48 (♩ = 144)

ff grandioso

allarg. . . a tempo ♩ = 180

rall. molto

[385] [390] 2

PARTE QUINTA: "CONCLUSIONE"

a tempo ♩ = 180

2 395

sf sf sf ff marc.

400 *fff*

405

410

sul pont. 415 ord.

p < f < mf < più f > f < ff < p

(unis.) 420 rall.

f < ff f < ff

Poco sostenuto 2 a tempo, ma poco agitato 430

ff ff ff

rall. molto - - - - - a tempo, molto pomposo 435

(unis.) *ff*

440 pizz.