

Violoncello

Sonate in a-moll
für 2 Violinen und Basso continuo

op.5 Nr.4

Gottfried Finger

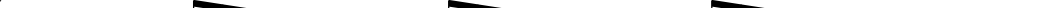
5

10

[illegible]

Allegro

Allegro



The first staff of music is in bass clef and 2/4 time. It begins with a quarter rest, followed by a quarter note G2, an eighth note A2, and an eighth note B2 beamed together. This is followed by a quarter note C3, a quarter note D3, and a quarter note E3. The next measure contains a quarter note F3, a quarter note G3, and a quarter note A3. The following measure has a quarter note B3, a quarter note C4, and a quarter note D4. The next measure contains a quarter note E4, a quarter note F4, and a quarter note G4. The following measure has a quarter note A4, a quarter note B4, and a quarter note C5. The next measure contains a quarter note D5, a quarter note E5, and a quarter note F5. The final measure of the staff has a quarter note G5, a quarter note A5, and a quarter note B5.

6

The bass line of 'The Rose Tree' is written on a single staff with a bass clef. It consists of 16 measures. The melody is primarily composed of eighth and sixteenth notes, with some triplet markings. A key signature change to one sharp (F#) occurs at measure 10. The line ends with a double bar line.

10

10

13

13

17

17

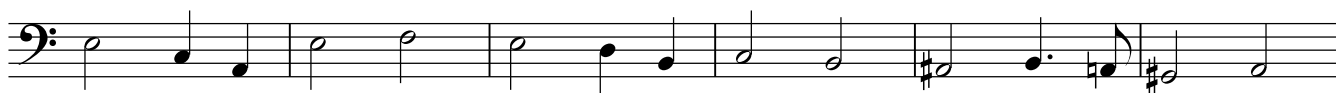
22

22 

25

[illegible]

Adagio



7

**Allegro**

8



13



17



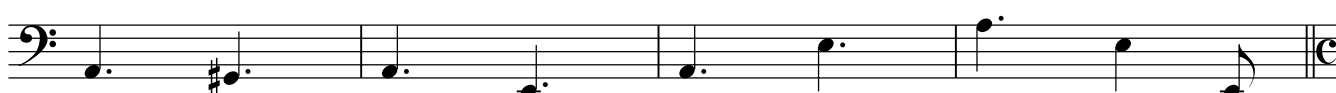
21



26



30

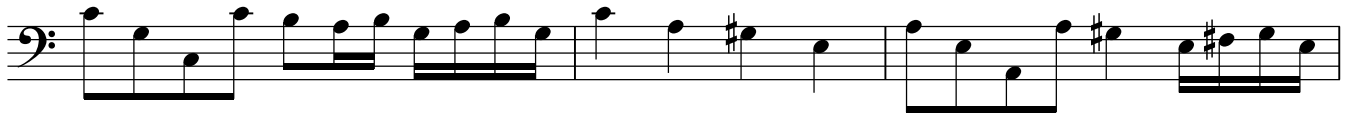


34 **Allegro**

42



47



50



54



59



63



67

