

Se consulta il suo dover

From Imeneo

G F Handel

Transcribed par A P Duncan

Maestoso

Measures 1-6 of the piece. The music is in G major (one sharp) and 3/4 time. The tempo is Maestoso. The first measure starts with a forte (*f*) dynamic. The piece features a mix of chords and moving lines in both hands. The sixth measure ends with a mezzo-forte (*mf*) dynamic marking.

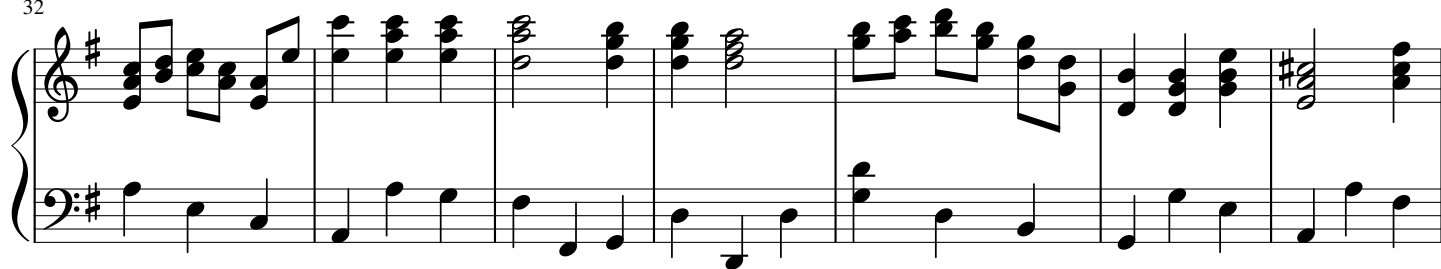
Measures 7-13. The melody continues with eighth and sixteenth notes. The bass line provides a steady accompaniment with chords and single notes. The key signature and time signature remain consistent.

Measures 14-19. Measure 14 is marked with the number 14. The piece includes a trill (*tr*) in the right hand at the end of measure 19. The musical texture remains consistent with the previous measures.

Measures 20-24. Measure 20 is marked with the number 20. The right hand features a more active melody with sixteenth notes. The bass line continues with a simple accompaniment pattern.

Measures 25-29. Measure 25 is marked with the number 25. The piece concludes with a double bar line and repeat signs. The final measures return to a more static harmonic texture with sustained chords.

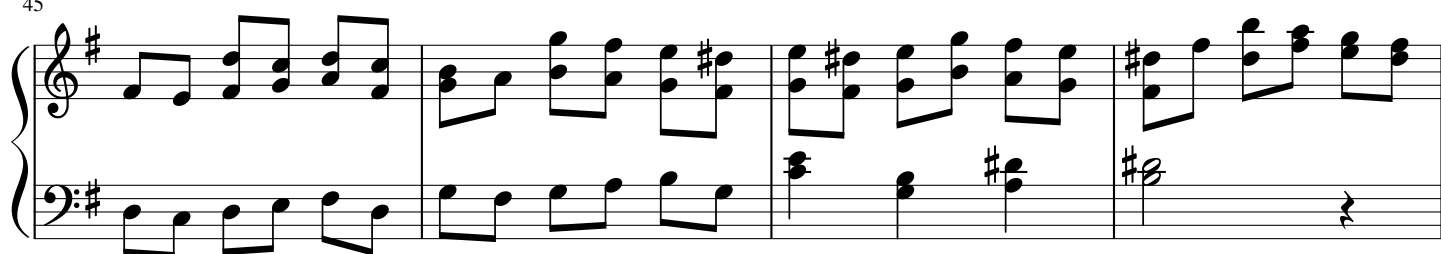
32



39



45



49



54



58

