

Suite 5

Ouverture

*Johann Kaspar
Ferdinand Fischer*

Sopranino

5

9

14

17

20

23

26

29

32

35

39

Entrée

Musical score for 'Entrée' in G major, 2/2 time, Soprano voice. The score consists of six staves of music. The first staff begins with a treble clef, a key signature of one sharp (F#), and a 2/2 time signature. The melody is written in a simple, lyrical style with various note values including quarter, eighth, and half notes, as well as rests. The second staff starts at measure 6. The third staff starts at measure 11 and ends with a double bar line and repeat dots. The fourth staff starts at measure 17 and includes a repeat sign at the beginning. The fifth staff starts at measure 22. The sixth staff starts at measure 27 and ends with a double bar line and repeat dots.

Chaconne

Musical score for 'Chaconne' in G major, 3/4 time, Soprano voice. The score consists of five staves of music. The first staff begins with a treble clef, a key signature of one sharp (F#), and a 3/4 time signature. The melody is more rhythmic and complex than the 'Entrée', featuring many beamed eighth and sixteenth notes. The second staff starts at measure 7 and includes dynamic markings 'f' (forte) and 'p' (piano). The third staff starts at measure 15 and includes a 'Fin' marking above a fermata and a 'f' marking below. The fourth staff starts at measure 22. The fifth staff starts at measure 30 and includes a 'p' marking at the end.

37

45

53

61

Traquenard

6

12

Menuet

6

12

19

Suite 5

Ouverture

*Johann Kaspar
Ferdinand Fischer*

Soprano

5

9

14

17

20

23

26

29

32

35

39

Entrée



6



11



16



22



27



Chaconne



8



16

Fin



24



33



41



50



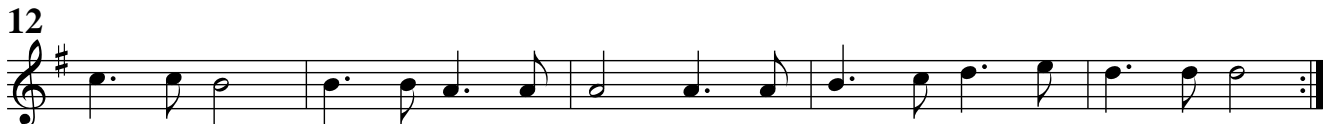
59



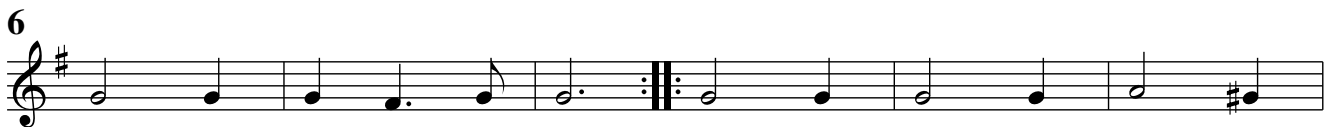
64



Traquenard



Menuet



Suite 5

Ouverture

*Johann Kaspar
Ferdinand Fischer*

Alto

[illegible]

12

1 2

17

[illegible]

26

The musical notation for measure 26 consists of a single staff with a treble clef and a key signature of one sharp (F#). The melody begins with a half note G4, followed by quarter notes A4, B4, and C5. This is followed by a dotted quarter note B4 and an eighth rest. The next two measures each contain a half note D5, a quarter note E5, and a quarter note F#5. The final measure contains a half note G5, a quarter note F#5, and a quarter note E5.

30

Musical notation for exercise 30, consisting of three measures on a single staff. The first measure contains four eighth notes: G4, A4, B4, and C5. The second measure contains a dotted quarter note G4, followed by two eighth notes: F#4 and E4. The third measure contains a dotted quarter note D4, followed by two eighth notes: C4 and B3. The key signature has one sharp (F#), and the time signature is 8/8.

33

33

39



1 2

Entrée

Musical score for the piece "Entrée" in G major, 2/2 time, Alto part. The score consists of seven staves of music. The first staff begins with a treble clef, a key signature of one sharp (F#), and a 2/2 time signature. The melody is composed of eighth and quarter notes. The second staff is marked with a "6" above the first measure. The third staff is marked with a "10" above the first measure. The fourth staff is marked with a "14" above the first measure and contains a repeat sign followed by a double bar line. The fifth staff is marked with a "19" above the first measure. The sixth staff is marked with a "24" above the first measure. The seventh staff is marked with a "28" above the first measure and ends with a double bar line and repeat dots.

Chaconne

Musical score for the piece "Chaconne" in G major, 3/4 time, Alto part. The score consists of five staves of music. The first staff begins with a treble clef, a key signature of one sharp (F#), and a 3/4 time signature. The melody is composed of eighth and quarter notes. The second staff is marked with a "7" above the first measure. The third staff is marked with a "16" above the first measure and contains a "Fin" marking above the first measure. The fourth staff is marked with a "25" above the first measure. The fifth staff is marked with a "34" above the first measure.

42



51



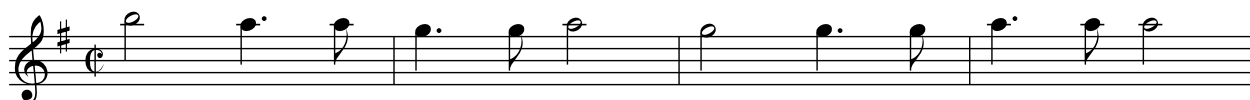
57



63



Traquenard



5



9



13



Menuet



10



18



Suite 5

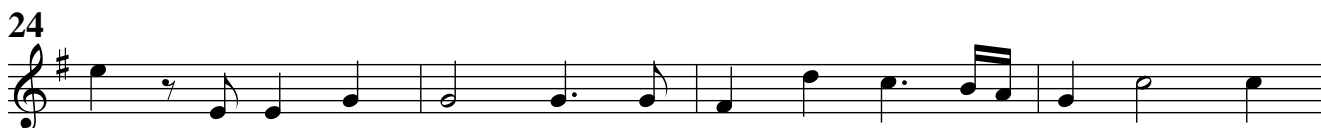
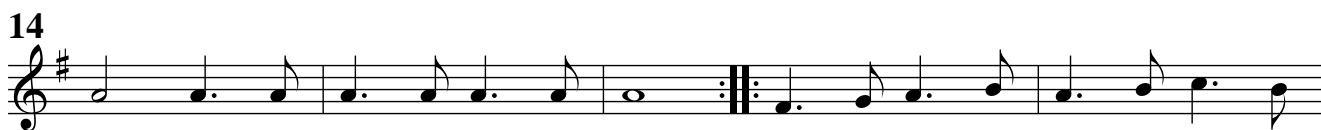
Ouverture

*Johann Kaspar
Ferdinand Fischer*

Tenore



Entrée



Chaconne



42



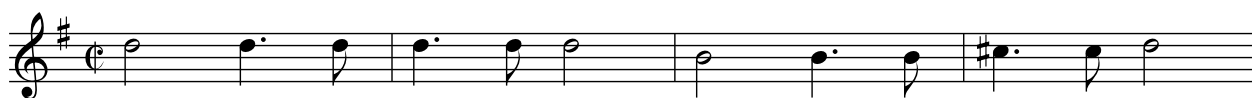
51



60



Traquenard



5



9



13



Menuet



10



18

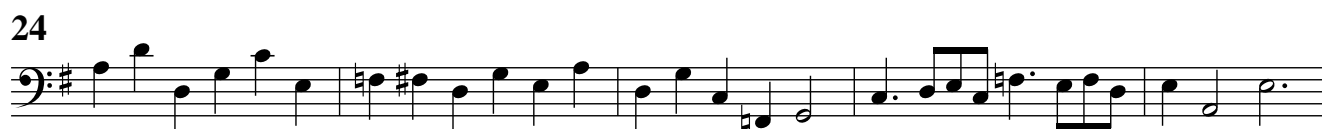
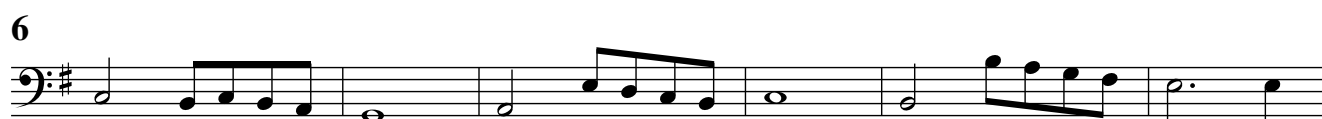


Suite 5

Ouverture

*Johann Kaspar
Ferdinand Fischer*

Basso



Entrée



6



11



17



22



27



Chaconne



8



15



23



31



39



47



54



58



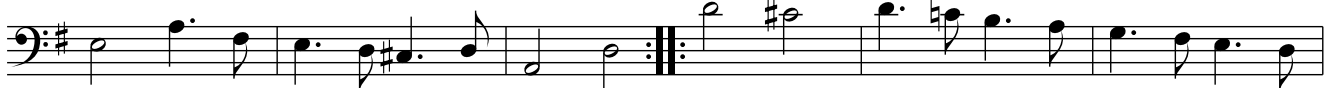
63



Traquenard



6



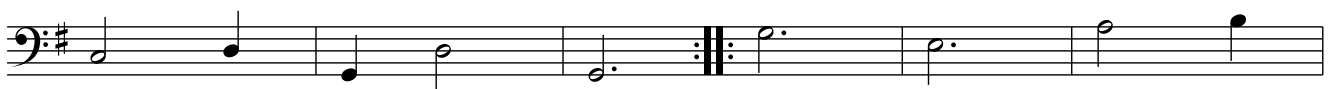
12



Menuet



6



12



19

