

Stephen W. Beatty

873 Trio for Violin,  
Viola and Cello No. 2

## Instrumentation:

Violin

Viola

Violoncello

Play Time: 6' 57"

[iridisc@q.com](mailto:iridisc@q.com)

Vienna Symphonic Library instruments used for  
the performance in the Weiler StoneRoom

# 873 Trio for Violin, Viola and Cello No. 2

3

Stephen W. Beatty (1938)

**A** ♩ = 90

Violin

Viola

Violoncello

4

Vln.

Vla.

Vc.

8<sup>va</sup>

7 (8)

Vln.

Vla.

Vc.

9

Vln. *mp* *mf* *f* *8va*

Vla. *mf*

Vc. *mf*

Measure 9: Violin I (Vln.) starts with a melodic line in treble clef, marked *mp*. It includes a triplet of eighth notes and a quarter note. Viola (Vla.) and Violoncello (Vc.) play a rhythmic accompaniment in bass clef, marked *mf*. Measure 10: Vln. continues the melody, marked *mf* and *f*, with an *8va* section indicated by a dashed line. Vla. and Vc. continue their accompaniment, with Vc. marked *mf*.

11 (8)

Vln. *mf* *f* *mf*

Vla. *mp* *mf* *f*

Vc. *mp* *mf*

Measure 11: Vln. continues the melody, marked *mf*, *f*, and *mf*. Vla. and Vc. continue their accompaniment, with Vla. marked *mp*, *mf*, and *f*, and Vc. marked *mp* and *mf*. Measure 12: Vln. continues the melody, marked *mf*. Vla. and Vc. continue their accompaniment, with Vla. marked *f* and Vc. marked *mf*.

13

Vln. *f* *mp*

Vla. *mp* *mf* *f* *mf*

Vc. *f* *mf*

Measure 13: Vln. continues the melody, marked *f* and *mp*. Vla. and Vc. continue their accompaniment, with Vla. marked *mp*, *mf*, *f*, and *mf*, and Vc. marked *f* and *mf*. Measure 14: Vln. continues the melody, marked *mp*. Vla. and Vc. continue their accompaniment, with Vla. marked *mf* and Vc. marked *mf*.

15

Vln.

Vla.

Vc.

*mf* *f* *mf*

*f* *mp*

17

Vln.

Vla.

Vc.

*pp* *mp* *p* *ppp*

*mf* *f* *mf*

*f* *mp*

19

Vln.

Vla.

Vc.

*f* *mf* *mp* *ppp* *mf*

*f* *mf* *mp* *8va* *ppp*

22

Vln.

Vla.

Vc.

*f* *mp* *f* *mp* *mf* *f*

*f* *mf* *pp*

25 (8)

Vln. *mp* *f*

Vla. *f*

Vc. *mf*

27

Vln. *mp* *mf*

Vla. *mf*

Vc. *f* *mf*

29 8<sup>va</sup>

Vln. *f* *mf*

Vla. *f* *mp* *mf* *mp* *mf*

Vc. *pp* *mp* *f*

31

Vln. *f* *mf*

Vla. *f* *mp* *mf*

Vc. *ff* *f*

33

Vln. *ff* *f*

Vla. *f* *mf* *f*

Vc. *mf* *p* *mp*

35

Vln. *ff* *mf* *mp* *mf*

Vla. *mf* *p* *mf* *f*

Vc. *f* *mf*

37

Vln. *f*

Vla. *mf* *mp*

Vc. *f* *mf*

39

Vln. *mf* *mp* *mf* *f*

Vla. *ppp* *f*

Vc. *f*

**B**  $\text{♩} = 90$

42

Vln. *mf* *f* *mp* *mf*

Vla. *ff*

Vc. *mf* *f*



44 *f* *8va*-----

Vln. *f*

Vla. *f* *ff*

Vc. *f* *mf*

47 *mf* (8)<sup>va</sup>-----

Vln. *mf*

Vla. *f* *ff* *f* *ff*

Vc. *mp* *mf* *f* *mp*

50

Vln. *mf* *f*

Vla. *mf* *f* *mp* *f*

Vc. *mf* *mp* *f*

53

Vln. *mf* *f* *mf* *f* *mp* *mf* *ff* *mf*

Vla. *mf*

Vc. *mf* *f* *mf*

56

Vln. *f*

Vla. *f* *mf* *ff* *f*

Vc. *mp* *mf* *f* *mf*



59

Vln. *ff* *mf* *ff*

Vla. *f* *mp* *mf*



61

Vln. *mf* *f*

Vla. *f*

Vc. *mp* *mf* *f* *mf* *mp* *f* *mf*

64 C ♩ = 100

Vln. *mf ff mf f*

Vla. *mf*

Vc.

67

Vln. *mf f mp mf f*

Vla. *ff f mf ff*

Vc. *ff f*

70

Vln.

Vla. *f*

Vc. *ff*

73

Vln.

Vla.

Vc.

*f* *ff* *f* *mf* *f* *mp* *f*

76

Vln.

Vla.

Vc.

*mf* *f* *mf* *f* *mf* *mp* *f*

78

Vln.

Vla.

Vc.

*mf* *f* *mf* *f* *mp* *mf* *f* *mf*

80

Vln.

Vla.

Vc.

*ff* *mf* *f* *f* *mf* *mp* *mf* *f* *ff* *f*

This musical score page contains measures 73 through 80 for three instruments: Violin (Vln.), Viola (Vla.), and Violoncello (Vc.). The music is written in a key with one flat (B-flat) and a 3/4 time signature. The Violin part features a melodic line with various dynamics including *f*, *ff*, *mf*, and *mp*. The Viola part provides harmonic support with patterns of eighth and sixteenth notes, also marked with dynamics like *f*, *ff*, *mf*, and *mp*. The Violoncello part has a more active, rhythmic role, often playing eighth notes and sixteenth notes, with dynamics ranging from *f* to *ff*. Measure 79 shows a key signature change to two flats (B-flat and E-flat) for the Viola and Violoncello parts. The page is numbered 12 at the top left.

83

Vln.

Vla.

Vc.

*mf* *f* *mf*

*mp* *mf* *f*

86

Vln.

Vla.

Vc.

*mf* *f*

*f* *mp* *mf* *f*

89

**D**

$\text{♩} = 95$

*mf* *ff*

*mf*

**D**

$\text{♩} = 95$

*mf* *pp*

8va

91 (8)

Vln. *f*

Vla. *f*

Vc. *mp* *mf* *f* *mf*

93

Vln. *mf*

Vla. *mf*

Vc. *f*

95 8va

Vln. *ff* *f* *mf*

Vla. *mp* *mf*

Vc. *mf* *mp* *f* *mf*

(8)---|

97

Vln. *f* *mf*

Vla. *f* *mf*

Vc. *ff* *f*

99

Vln. *f* *mf* *ff* *f*

Vla. *f* *mf*

Vc. *mf* *p* *mp*

101

8va-----|

Vln. *mf* *mp* *mf* *ff* *mf*

Vla. *f* *mp* *mf*

Vc. *f* *mf*

103 *8va*

Vln. *f*

Vla. *f* *mf* *f* *mf* *mp*

Vc.

105 (8)

Vln. *mf* *mp*

Vla. *ppp*

Vc. *f*

**E** ♩ = 95

**E** ♩ = 95

109

Vln. *f* *p* *f*

Vla. *f*

Vc. *mf* *f* *ff* *f* *mf*



112

Vln.

Vla.

Vc.

*ff*

*mf* *f* *mf*

*p* *f*

*p* *f* *mf* *f*

115

Vln.

Vla.

Vc.

*f*

*ff* *mf* *f* *mf*

*mf* *f* *mf*

118

Vln.

Vla.

Vc.

*f* *mf* *f*



129

Vln. *f* *mf* *ff* *mf*

Vla. *f* *mf* *ff* *mf*

Vc. *mf*

132

Vln. *f* *mf* *ff* *f*

Vla. *f* *mf* *f*

Vc. *f* *ff* *f*

135

Vln. *mf* *f* *mf*

Vla. *mf*

Vc. *mf* *f* *mf* *pp*

138

Vln. *f* *mf* *f* *mf* *f* F ♩ = 90

Vla. *f* *mf* *f* F ♩ = 90

Vc. *mf* *mp* *pp*

141

Vln. *mp* *f* *mf*

Vla. *mf* *f* *mp*

Vc. *mf* *f*

144

Vln. *f* *mf* 8va

Vla. *f* *mp* *mf* *f*

Vc. *mp* *f* *mf*

147 (8) 

Vln. *mp*

Vla. *mf*

Vc. *f*

149 *8va* 

Vln. *mf* *f*

Vla. *mp* *mf*

Vc. *mf*

151 (8) 

Vln. *mf* *f* *mf* *f* *mp*

Vla. *f* *mp* *mf* *f* *mf*

Vc. *mp* *mf* *f* *mf*

154

Vln.

Vla.

Vc.

*mf* *f* *mf*

*f* *mf*

*mp*

156

Vln.

Vla.

Vc.

*pp* *mp* *p* *ppp*

*mf* *f* *mf*

*f* *mp*

158

Vln.

Vla.

Vc.

*f* *mf* *mp*

*f*

159

Vln.

*mp* *ppp*

Vla.

*ppp*

Vc.

*mf* *mp* *ppp*

This musical score snippet shows measures 159 through 162 for three instruments: Violin (Vln.), Viola (Vla.), and Violoncello (Vc.). The Violin part begins with a treble clef and a key signature of one sharp (F#). It features a melodic line with eighth and sixteenth notes, marked with a mezzo-piano (*mp*) dynamic in measure 159 and a pianissimo (*ppp*) dynamic in measure 160. The Viola part, in bass clef, provides harmonic support with sustained notes and a long melisma in measure 160, marked *ppp*. The Violoncello part, also in bass clef, starts with a mezzo-forte (*mf*) dynamic in measure 159, moves to mezzo-piano (*mp*) in measure 160, and returns to pianissimo (*ppp*) in measure 161. The section concludes in measure 162 with a final chord and a repeat sign.

Violin

# 873 Trio for Violin, Viola and Cello No. 2

Stephen W. Beatty (1938)

**A**  $\text{♩} = 90$

5 *mf* *f* *mp* *f* *mf*

8 *f* *mf* *8va*

11 *mf* *f* *mf* *8va*

14 *f* *mp* *mf* *f* *mf*

17 *pp* *mp* *p* *ppp* **3**



## Violin

23 *f* *mf* *f* *mp* *8va*

26 (8) *f* *mp* *mf* *f* *8va*

30 (8) *mf* *f* *mf*

33 *ff* *f* *ff* *mf* *mp*

36 *mf* *f*

39 *mf* *mp* *mf* *f*  $\text{♩} = 90$  **B**

42 *mf* *f* *mp* *mf* *f*

46 *8va*

50 *mf* *f*

53 *mf* *f* *mf* *f* *mp* *mf* *ff* *mf*

57 *f*

61 *mf f*

65 **C** ♩ = 100  
*mf ff mf f mf*

68 *f mp mf f*

72

76 *mf f mf f*

79 *mf f mp mf ff mf f*

84 *mf*

87 *f*

89 **D** ♩ = 95 *8va*  
*mf ff f*

## Violin

Violin score for measures 93-125. The score is written in treble clef with a key signature of one flat (B-flat). The tempo is marked as  $\text{♩} = 95$ . The score includes various dynamic markings and articulations.

Measures 93-95: *mf*, *ff*, *f*. *8va* marking above measure 95.

Measures 96-98: *mf*, *f*, *mf*. *8va* marking above measure 98.

Measures 99-101: *f*, *mf*, *ff*, *f*, *mf*, *mp*. *8va* marking above measure 101.

Measures 102-104: *mf*, *ff*, *mf*, *f*. *8va* marking above measure 104.

Measures 105-107: *mf*, *mp*, *f*. *8va* marking above measure 107. A box labeled **E** is present above measure 105.

Measures 108-110: *p*, *f*, *ff*.

Measures 111-113: *mf*, *f*, *mf*, *f*.

Measures 114-116: *ff*, *mf*.

Measures 117-119: *f*, *ff*, *f*, *ff*.

Measures 120-122: *mf*, *f*.

128 *mf f mf f mf ff mf*

132 *f mf ff f*

135 *mf f mf*

138 *f mf f*

140 **F**  $\text{♩} = 90$  *mf f mp f mf*

144 *f mf* *8va*

147 *(8) mf f* *8va*

150 *(8) mf f mf*

153 *f mp mf f mf*

156 *pp mp p ppp*

159

A musical score for a violin part, measures 159 to 164. The notation is on a single staff with a treble clef. Measure 159 begins with a repeat sign and contains a sixteenth-note triplet (G4, A4, B4) and a quarter note (C5). Measure 160 contains a quarter note (B4), an eighth note (A4), and a quarter note (G4). Measure 161 contains a quarter note (F4), an eighth note (E4), and a quarter note (D4). Measure 162 contains a quarter note (C4), an eighth note (B3), and a quarter note (A3). Measure 163 contains a quarter note (G3), an eighth note (F3), and a quarter note (E3). Measure 164 contains a quarter note (D3), an eighth note (C3), and a quarter note (B2). The dynamic *mp* is placed below the staff between measures 160 and 161. The dynamic *ppp* is placed below the staff between measures 162 and 163. The piece concludes with a double bar line at the end of measure 164.

Viola

# 873 Trio for Violin, Viola and Cello No. 2

Stephen W. Beatty (1938)

**A**  $\text{♩} = 90$

6

9

11

14

17

21

25

28

*mf f mp f mp mf*

*f*

*mf*

*mp mf f mp mf*

*f mf f mp*

*mf f mf f mf mp ppp*

*mf f mp f mp mf*

*f*

*mf mp mf mp*

30



33



36

40 **B**

♩ = 90



44



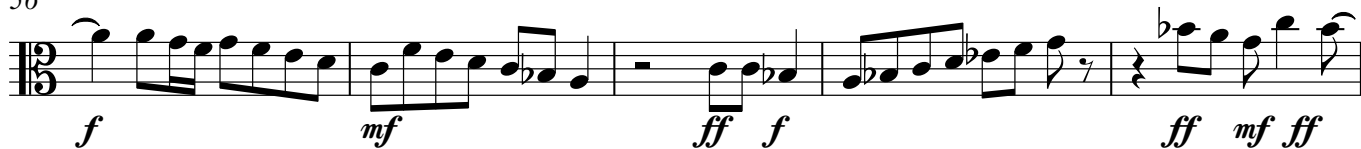
48



52



56



61

65 **C** ♩ = 100

69



73



76



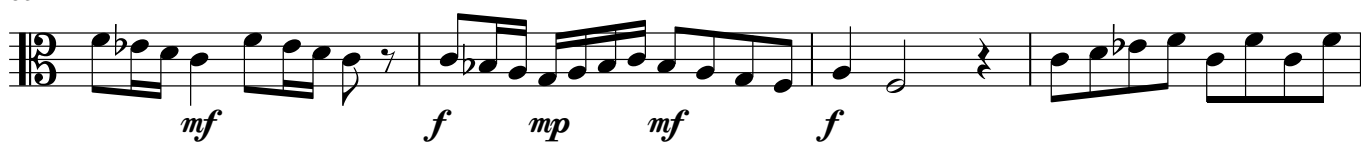
79



82



85

89 **D**

93



95



98





101



104

107 E ♩ = 95

114



118



124



127



130



134

139 F ♩ = 90

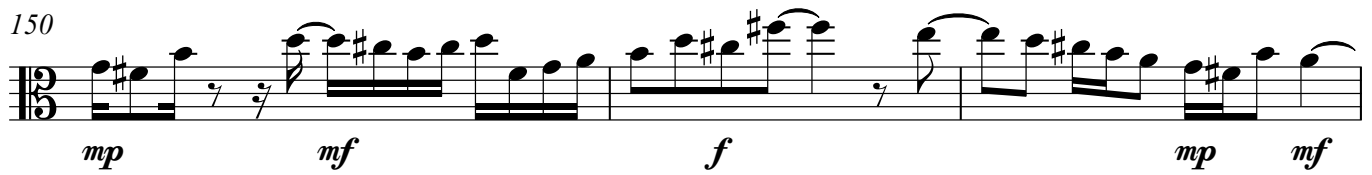
144



148



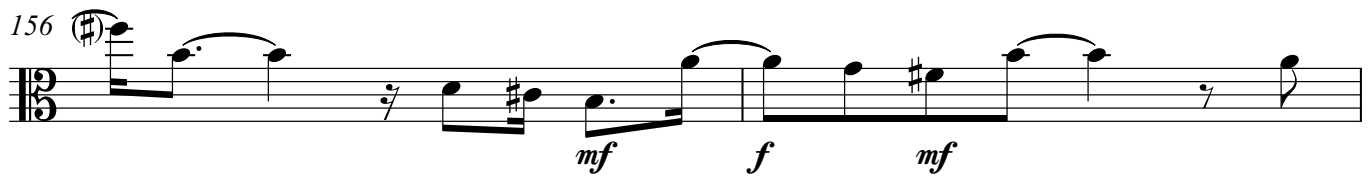
150



153



156



158



Violoncello

# 873 Trio for Violin, Viola and Cello No. 2

Stephen W. Beatty (1938)

**A** ♩ = 90



7



10



13



16



19



21



24



27



30



34



38



42



45



49



53



56



60

*mf mp mf f mf*

63

**C**  $\text{♩} = 100$   
2

*mp f mf ff f*

69

*ff*

73

*f mp f mp f*

77

*mf ff f*

82

*mp mf f*

86

*f mf f*

89 **D**  $\text{♩} = 95$

*mf pp mp mf f mf*

93

*f mf mp*

96

*f mf ff f*

99



103

107 E ♩ = 95

111



115



119



123



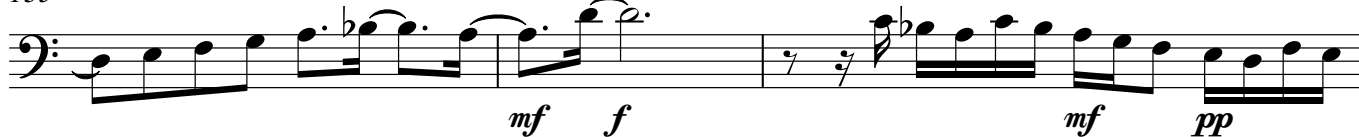
127



131



135



Violoncello

5

138



144



148



151



154



157



159

