

Tamás Beischer-Matyó

Concerto antico

for violin, cello and string orchestra

Double bass

Double bass

dedicated to László G. Horváth, Richárd Rózsa
and the Anima Musicæ Chamber Orchestra

Concerto antico

for violin, cello and string orchestra

I

Tamás Beischer-Matyó

Vivace ♩ = 138

Score for Double Bass, Part I, measures 1-50. The score is written in treble and bass staves with a key signature of two sharps (F# and C#). The tempo is marked **Vivace** with a quarter note equal to 138 beats per minute. The score includes various dynamics and articulations:

- Measures 1-13: Vln. I 8th line, *pp* (pianissimo).
- Measures 13-18: S. vc. (Solo Violoncello), *p* (piano).
- Measures 18-25: Vc. 8th line, *pp* (pianissimo).
- Measures 25-32: Vln. I 8th line, *pp* (pianissimo).
- Measures 32-41: Vln. I 8th line, *pp* (pianissimo), *gliss.* (glissando).
- Measures 41-46: Vln. I 8th line, *col legno* (col legno), *p* (piano), *f* (forte), *p* (piano), *f* (forte).
- Measures 46-50: Vln. I 8th line, *pizz.* (pizzicato), *f* (forte), *ff* (fortissimo), *arco* (arco), *sfz* (sforzando), *p* (piano).

Copyright Tamás Beischer-Matyó, 2020

http://beischermatyó.hu/concerto_antico

This work is licensed under the Creative Commons Attribution-NonCommercial-NoDerivatives 4.0 International License.
To view a copy of this license, visit <https://creativecommons.org/licenses/by-nc-nd/4.0/>

III 58

sffz \rightrightarrows *p* *sffz* \rightrightarrows *pp*

68

pp

74 *rit.* - - **Allegro moderato** ♩ = 88 79 2

ppp *p* *f* \rightrightarrows *p*

83 *pizz.*

f *pesante* *pp*

87 91 *arco*

mf

97 **Vivo** ♩ = 112

ff *sffz* \rightrightarrows *p*

pizz. *arco* *rit.* - - -

f \rightrightarrows *p* *f* *pp*

106 *a tempo* ♩ = 112 *pizz.*

f *p*

111 *rall.* - - - - - ♩ = 76 116 2 *rit.* - - - - -

ff

♩ = 69
arco
con sord.

125
rall. ----- Adagio ♩ = 63 rall.

129
♩ = 60 rall. ♩ = 58

135
rall. ♩ = 56 rall. ♩ = 54

139
rall. . . ♩ = 52 Vivace ♩ = 138

147
gliss. al niente

Vln. I
8^{va}

157
senza sord.

162
p f

171
p f

180
p f p

188 195

f *sfz* *p*

sfz *p* *sfz* *p* *sfz* *p* *sfz*

203 210 220

5 10 2

S. vln. 8

228

(8) *rit. molto* *a tempo* ♩ = 138

mf *f* *f marcato*

234

rall. ♩ = 88 *a tempo* ♩ = 138

sfz *p* *f*

239

rall. ♩ = 88 *ten.* ♩ = 138 ♩ = 88

pp *f* *mf*

244

♩ = 138 *arco*

f *ff*

rall. ♩ = 88

pp *f* *ff*

II

Con moto ♩ = 126 10 19 27 33 37 *rit.*

9 9 8 6 4 4

(rit.) **a tempo** 43 *rall. molto* 47 **Un poco agitato** ♩ = 138

Vln. I s. col legno *pp*

56 **un poco tratt.** ♩ = 112 *mf*

a tempo ♩ = 138 *ord.* *pp* *col legno* *pp* 61 *mp* *rall.*

68 **un poco tratt.** ♩ = 112 *pp* *rit.* ♩ = 112 *rit.*

77 *rit.* **Con moto** ♩ = 126 *rall.*

♩ = 112 *ord. ten. ten.* *col legno* *mp* *pp* *f*

82 **un poco tratt.** ♩ = 112 *rall. molto* 89 **Un poco agitato** ♩ = 138

con sord. *ord.* *pizz.* *p* *ppp* *f* *p*

100



mf *p*

104

rall. molto *al* ♩ = 84 *un poco tratt.* ♩ = 112



110

114

rit. *a tempo*



120

arco

rit. - -



mp *mf*

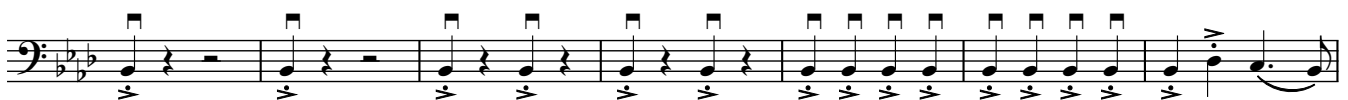
123

Appassionato ♩ = 168

131

pizz. *ff*

arco



140

pizz.

tratt. ♩ = 152

rit.

144

a tempo ♩ = 168



148



152

156



mf

160

rall. - - - -

S. vc. 8

*p**pp**ppp**mf*

(rall.) - - - *al* ♩ = 84 **168** *Con moto* ♩ = 126

ppp

177

183

rit. - - - - - *a tempo*
col legno

p *pp*

197 *rit.* - - - - - *a tempo*
ord.

202 *rall.* - - - - - *Lento molto* ♩ = 48
con sord. *rit.* - -

pppp *pp* *pp* *pp* *pp* *pp* *pp*

211 *a tempo* ♩ = 48 *rit.* ♩ = 112 *poco accel.* - - - - - **215** *Un poco agitato* ♩ = 138

ppp *pp* *p*

221 *rall.* ♩ = 112 *rall.* ♩ = 96 *rall.*

p *p* *f*

229 *(rall.)* - - - ♩ = 76 *rall.* - - - - -
col legno

p *p* *p* *mp* *ppp*

III

Allegretto ♩. = 88

sul pont. - -> ord. [8] sul pont. -
sfz pp *mp pp* *mp pp*
 - -> ord. [16] sul pont. - -> ord.
mp pp *mp pp*
 sul pont. - -> ord. [24] sul pont. - -> ord.
mp pp *mp pp*
 sul pont. - -> ord. [33] *pp*
mp pp [42]
 pizz. *f*
[52]
p
 arco [57] *ff*
[66]
[73]
Meno mosso ♩ = 76
 3
ppp

pizz.

84

mf pp *mf pp* *mf pp*

92

mf pp

mf *p* *mf* *p*

102

pp *f*

110

Allegretto ♩ = 88

ff *p*

115

123

Vln. I
8 arco, sul pont.
pp trem.

(8) arco, sul pont. col legno

mp

133

Allegro vivace ♩ = 152

f *mp*

138

Vln. I
8

142

mp

146



S. vln.

8

153



arco

159



167



173



182

S. vc.



188

S. vc.

193



199



206

S. vc.



213 217

mf *pp*

221 225

ff $\text{ff} > \text{mp}$ *ff*

sffz

233 240

2 *mf*

sffz *sffz* *sffz* *sffz* *sffz* *sffz* *sffz* *sffz*

246 250

3 3

ff

254 258

mp *mf*

262

arco *f* *ff*

269

275

poco rall. **Allegretto** $\text{♩} = 88$

arco *pp* sul pont. - \rightarrow ord.

mp *pp*

281 pizz. *p* 289

297 *mf*

S. vc. 8

306 *f* 4

315 *un poco tratt.* $\text{♩} = 76$
arco *ff espr.*

320 *rit.* ... *accel.* ... *a tempo* $\text{♩} = 88$
f > p f > p f > p f > p

325 *rit.* 2 S. vc. 8 *a tempo*

(8) arco *f* 337 *p*

poco rit. ... *ppp*