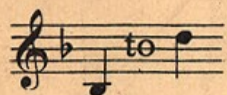
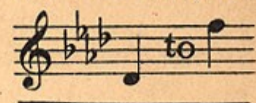


† 12269  
N<sup>o</sup> 1. IN F.



† 12268  
N<sup>o</sup> 2. IN A<sup>b</sup>.



# O PERFECT LOVE

Wedding Song

THE WORDS BY

D. F. Blomfield

THE MUSIC BY

H. T. BURLEIGH.

PRICE 60 CENTS

Philadelphia  
Theodore Presser Co.  
1712 Chestnut Str.

G. Fred Kranz Music Co.  
327 N. CHARLES ST.  
Baltimore, Md.

To Miss Dora J. Cole, Philadelphia, Pa.

June 15, 1904.

No. 12268

# O Perfect Love

## WEDDING SONG.

Words by  
D. F. BLOMFIELD

Music by  
H. T. BURLEIGH

Voice. *mf* O per-fect

Piano. *mf*

Love, all hu-man thought trans-cend-ing, Low-ly we kneel in

pray'r be-fore Thy throne, That theirs may be the

love that knows no end - ing, Whom Thou for - ev - er - more dost

join — in one, — whom Thou for - ev - er - more dost

join — in one.

O per - fect

Life, be Thou their full as - sur - ance Of ten - der

char - i - ty and stead - fast faith, Of pa - tient

hope, and qui - et, brave en - dur - ance, With child - like

trust that fears nor pain — nor death, With — child - like

trust that fears nor pain — nor death.

*rit.* - - -

*(Brightly.)*

Grant them the joy which bright - ens earth - ly sor - row;

*p*

Grant them the peace which calms all earth - ly strife,

*p*

Detailed description: This system contains the first two lines of music. The top line is a vocal melody in a treble clef, starting with a piano (*p*) dynamic. The bottom two lines are a piano accompaniment in a grand staff (treble and bass clefs). The key signature has three flats (B-flat, E-flat, A-flat). The music consists of four measures. The piano accompaniment features a steady eighth-note bass line and chords in the right hand.

*cresc. sempre*

And to life's day the glo-rious un-known mor - row,

*cresc.*

Detailed description: This system contains the second two lines of music. The vocal line continues with a piano (*p*) dynamic. The piano accompaniment is marked with a *cresc. sempre* (crescendo) instruction. The music consists of four measures. The piano accompaniment features a steady eighth-note bass line and chords in the right hand.

That dawns up - on e - ter - nal love — and life,

Detailed description: This system contains the third two lines of music. The vocal line continues with a piano (*p*) dynamic. The piano accompaniment features a steady eighth-note bass line and chords in the right hand. The music consists of four measures.

that dawns up - on e - ter - nal love — and life.

Detailed description: This system contains the final two lines of music. The vocal line continues with a piano (*p*) dynamic. The piano accompaniment features a steady eighth-note bass line and chords in the right hand. The music consists of four measures.

(Slower and more fervently.)

O per-fect Love! O per-fect Life!

The first system consists of a vocal line and piano accompaniment. The vocal line is in a treble clef with a key signature of three flats (B-flat, E-flat, A-flat). It features a melodic line with a fermata over the word "Love!". The piano accompaniment is in a grand staff (treble and bass clefs) with a key signature of three flats. It includes chords and a bass line with eighth notes.

Grant them Thy joy! Grant them Thy

The second system continues the vocal and piano parts. The vocal line has a fermata over "joy!". The piano accompaniment includes a change in key signature to two flats (B-flat, E-flat) and a *rit.* marking. The piano part features chords and a bass line with eighth notes.

peace! A-men, A - men, A - men.

The third system concludes the piece. The vocal line starts with a *ppp* dynamic and has a fermata over "peace!". The piano accompaniment includes a *pp* dynamic marking and a *rit.* marking. The piano part features chords and a bass line with eighth notes.