

## Violino Secondo

# Sinfonia

RV 122

## 1. Allegro

Antonio Vivaldi  
(1678 - 1741)

4

7

10

13

16

19

22

25

28

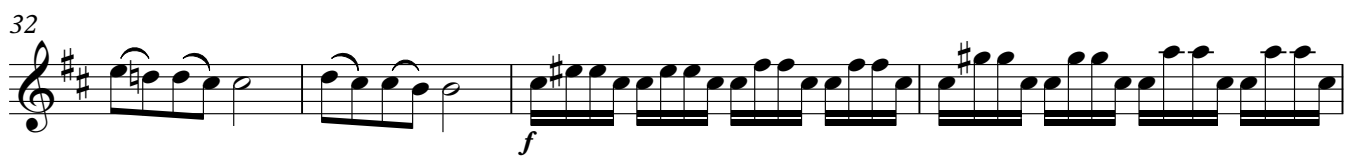
*p*

*f*

*p*

V.S.

32



32 33 34 35

*f*

This staff contains measures 32 through 35. It begins with a treble clef and a key signature of two sharps (F# and C#). Measures 32 and 33 feature eighth-note patterns. Measure 34 starts with a forte (*f*) dynamic marking and contains a continuous sixteenth-note run. Measure 35 continues this sixteenth-note run.

36



36 37 38 39

This staff contains measures 36 through 39. Measure 36 continues the sixteenth-note run. Measure 37 has a whole rest. Measure 38 has a half rest followed by an eighth rest and an eighth note. Measure 39 contains a quarter note and a half note.

40



40 41 42

This staff contains measures 40 through 42. Measure 40 continues the sixteenth-note run. Measure 41 continues the sixteenth-note run. Measure 42 continues the sixteenth-note run.

43



43 44 45

This staff contains measures 43 through 45. Measure 43 continues the sixteenth-note run. Measure 44 continues the sixteenth-note run. Measure 45 continues the sixteenth-note run.

46



46 47 48

This staff contains measures 46 through 48. Measure 46 begins with a sixteenth rest followed by a sixteenth-note run. Measure 47 continues the sixteenth-note run. Measure 48 continues the sixteenth-note run.

49



49 50 51

This staff contains measures 49 through 51. Measure 49 begins with a sixteenth rest followed by a sixteenth-note run. Measure 50 continues the sixteenth-note run. Measure 51 continues the sixteenth-note run.

52



52 53 54

This staff contains measures 52 through 54. Measure 52 continues the sixteenth-note run. Measure 53 continues the sixteenth-note run. Measure 54 continues the sixteenth-note run.

55



55 56 57

*p*

This staff contains measures 55 through 57. Measure 55 continues the sixteenth-note run. Measure 56 continues the sixteenth-note run. Measure 57 begins with a piano (*p*) dynamic marking and contains a sixteenth rest followed by a sixteenth-note run.

58



58 59 60

*f*

This staff contains measures 58 through 60. Measure 58 continues the sixteenth-note run. Measure 59 begins with a forte (*f*) dynamic marking and contains a sixteenth rest followed by a sixteenth-note run. Measure 60 continues the sixteenth-note run.

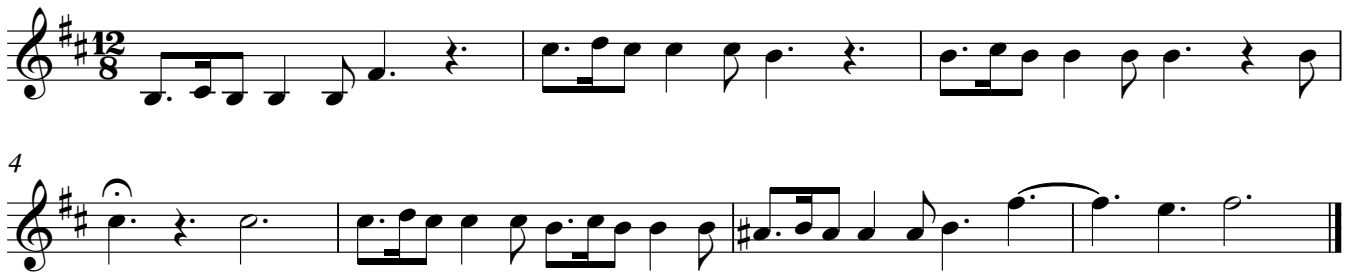
61



61 62 63

This staff contains measures 61 through 63. Measure 61 continues the sixteenth-note run. Measure 62 contains a quarter note, a half note, and a whole note. Measure 63 contains a quarter note, a half note, and a whole note.

## 2. Largo



## 3. Presto

