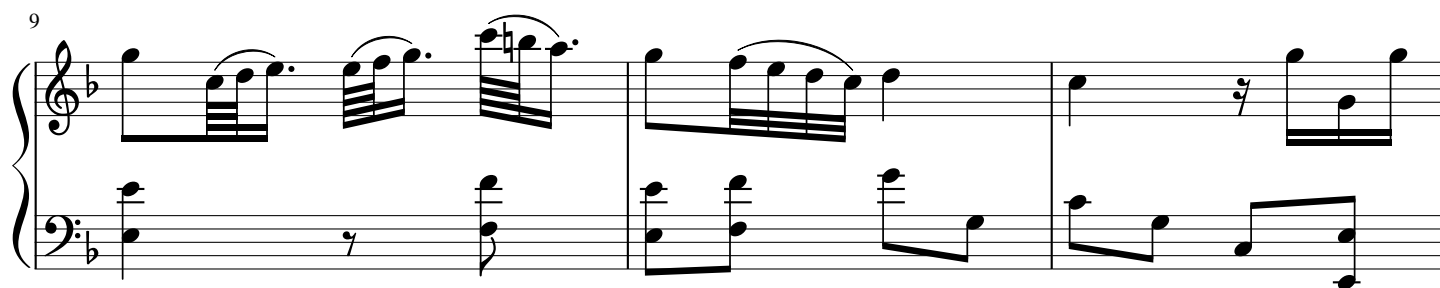
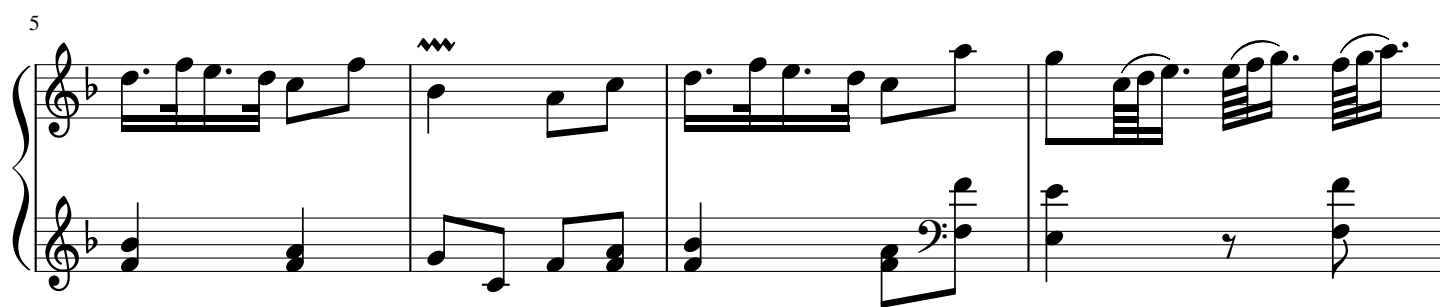
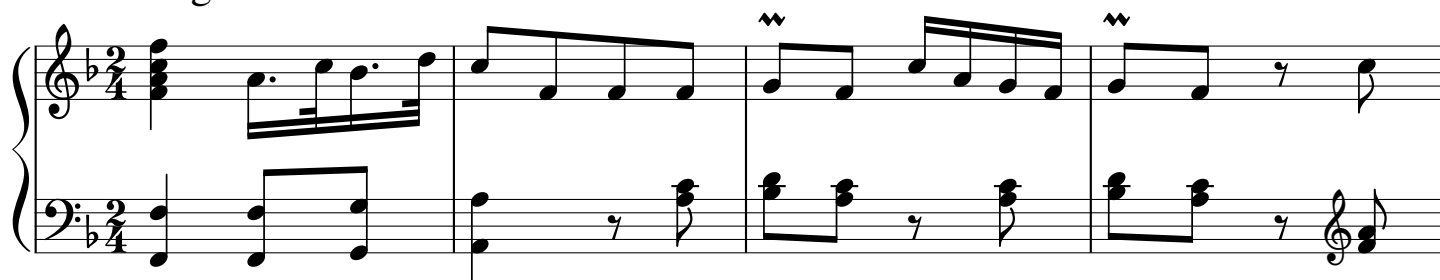


# Keyboard Sonata, Divertimento no. 3

Hob. XVI:9

Joseph Haydn

Allegro



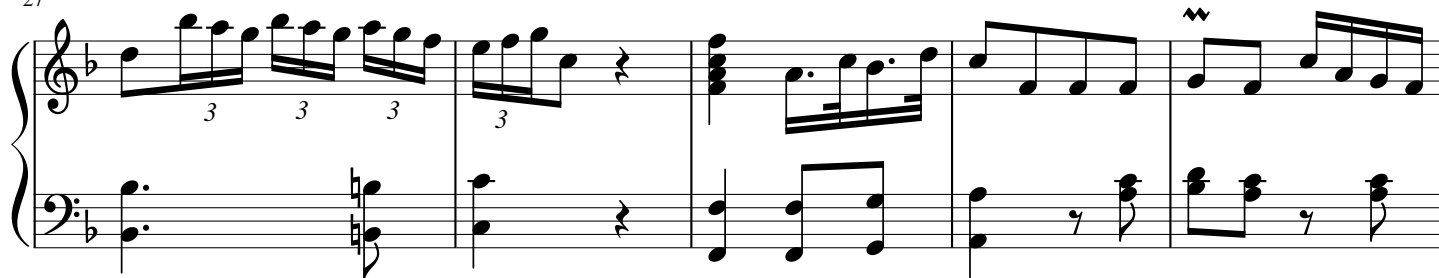
16



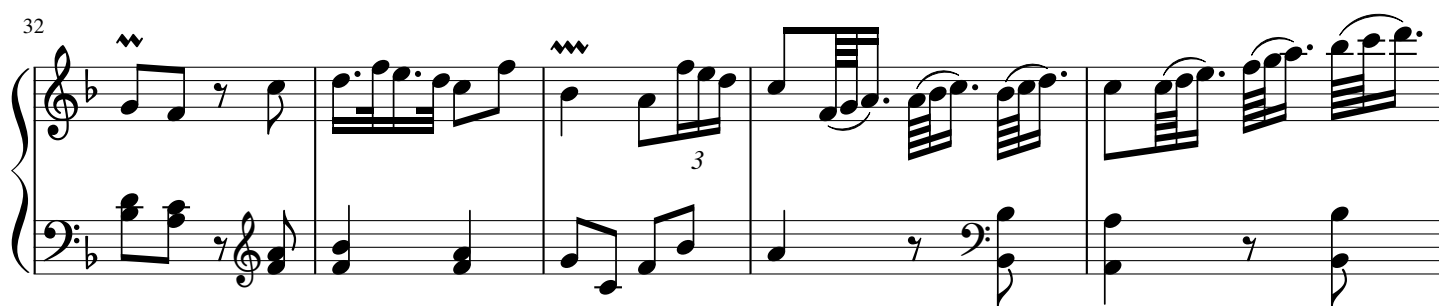
22



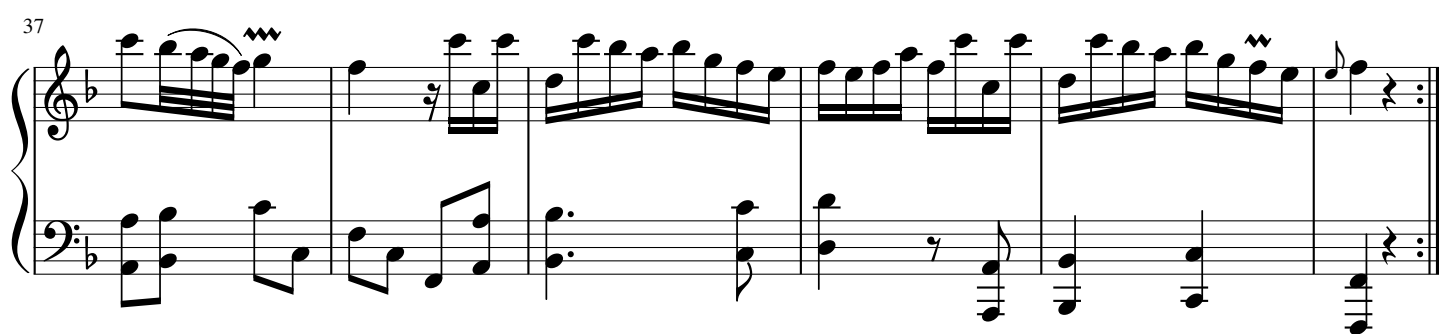
27



32



37



# Menuet

Measures 1-5 of the Minuet. The piece is in 3/4 time with a key signature of one flat (B-flat). The right hand features a melody with trills and triplets, while the left hand provides a simple harmonic accompaniment.

Measures 6-10 of the Minuet. The right hand continues with triplets and a trill, leading to a repeat sign at the end of measure 10. The left hand accompaniment remains consistent.

Measures 11-15 of the Minuet. This section includes a repeat sign at the beginning of measure 11. The right hand features more triplets and a trill, while the left hand has a melodic line in the first two measures.

Measures 16-22 of the Minuet. The right hand has a trill in measure 17 and continues with triplets. The left hand accompaniment is steady, with some melodic movement in the first two measures.

Measures 23-28 of the Minuet. The right hand features a series of triplets and a trill, ending with a repeat sign at the end of measure 28. The left hand accompaniment is consistent throughout.

29 Trio

Measures 29-32 of the Trio section. The music is in 3/4 time and B-flat major. Measure 29 starts with a repeat sign. The right hand features a triplet of eighth notes (G4, A4, Bb4) in measure 29, and triplets of eighth notes (Bb4, A4, G4) in measures 30 and 31. The left hand provides a simple harmonic accompaniment with single notes and chords.

33

Measures 33-36. The right hand continues with a melodic line, featuring a triplet of eighth notes (G4, A4, Bb4) in measure 35. The left hand plays a steady eighth-note accompaniment in measures 33 and 34, which then changes to a more complex pattern in measures 35 and 36.

37

Measures 37-40. The right hand features a continuous eighth-note triplet pattern in measures 37, 38, and 39. The left hand provides a harmonic accompaniment with single notes and chords.

41

Measures 41-44. The right hand has a melodic line with a triplet of eighth notes (G4, A4, Bb4) in measure 43. The left hand plays a steady eighth-note accompaniment in measures 41 and 42, which then changes to a more complex pattern in measures 43 and 44.

Menuet D.C. al Fine

# Scherzo

