

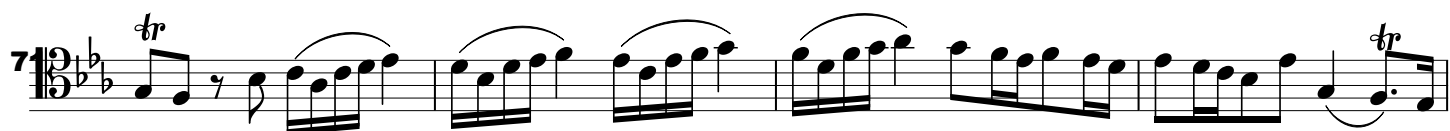
Cello concerto in E flat Major, RV 408

Cello solo

Vivaldi, Antonio

Allegro non molto

1
6
11
18
21
24
31
34
37
41



Largo

94

95

104

105

106

The image displays a musical score for the song "The Rose Tree". It consists of six staves of music, each with a measure number in the top left corner: 114, 120, 125, 130, and 135. The music is written in a key signature of three flats (B-flat, E-flat, and A-flat) and a 3/4 time signature. The notation includes various musical symbols such as notes, rests, beams, and bar lines. The melody is primarily composed of eighth and sixteenth notes, with some measures featuring triplets. The score is presented in a clean, black-and-white format, typical of a printed musical manuscript.

