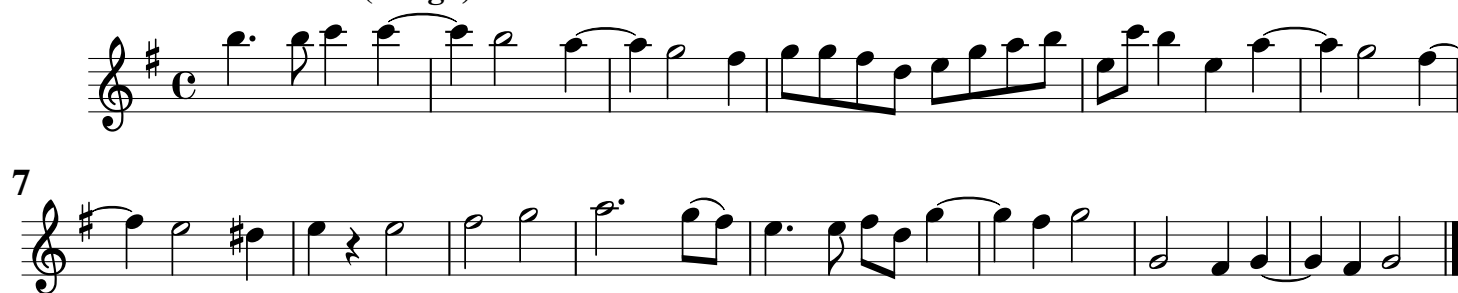
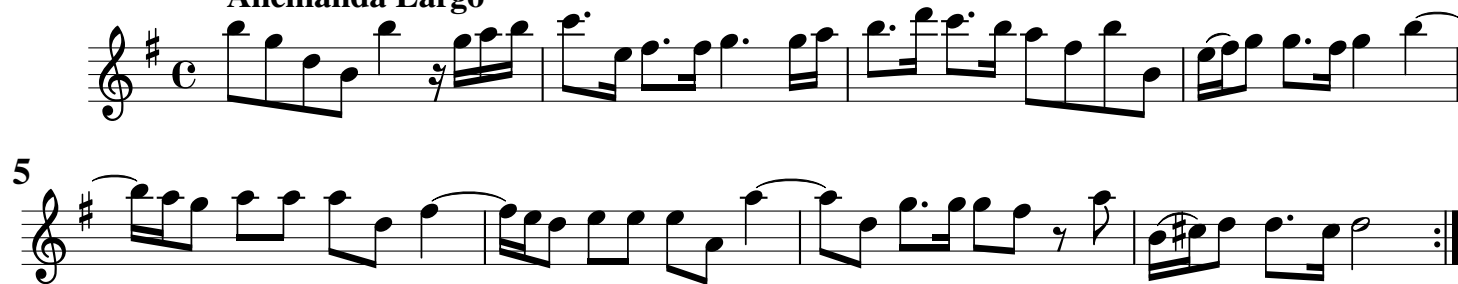


Preludio (Largo)



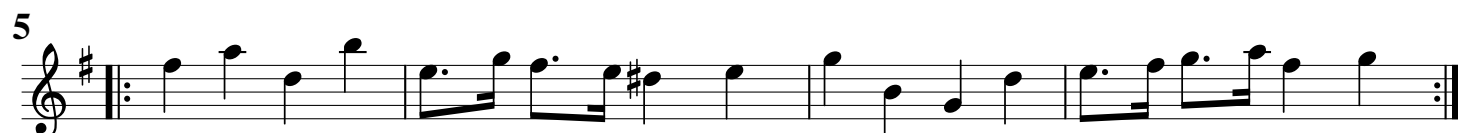
Allemanda Largo



Corrente Allegro



Gavotta Allegro



Englischhorn

Sonata da Camera

op. 2 No. 2

Arcangelo Corelli

Allemanda Adagio



Musical score for Allemanda Adagio, Op. 2 No. 2 by Arcangelo Corelli. The piece is in G major and common time (C). It consists of 19 measures. The notation is in treble clef. The first measure starts with a whole rest. The melody is characterized by eighth and sixteenth notes, with some triplets. The piece ends with a double bar line and repeat dots.

Corrente Allegro



Musical score for Corrente Allegro, Op. 2 No. 2 by Arcangelo Corelli. The piece is in G major and 3/4 time. It consists of 40 measures. The notation is in treble clef. The melody is characterized by eighth and sixteenth notes, with some triplets. The piece ends with a double bar line and repeat dots.

p

Giga Allegro



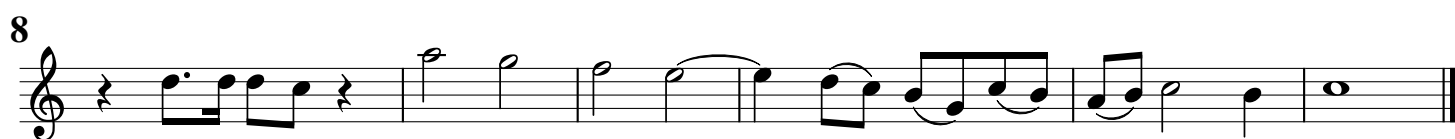
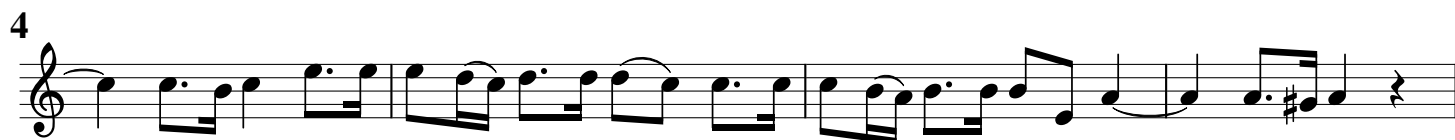
Englischhorn

Sonata da Camera

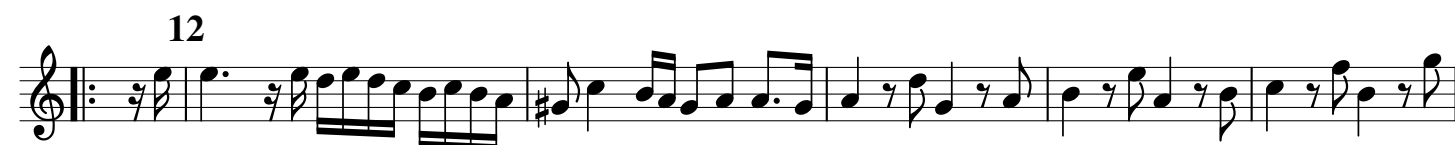
op. 2 No. 3

Arcangelo Corelli

Preludio Largo



Allemanda Allegro



Adagio



Allemanda Presto



Englischhorn

Sonata da Camera

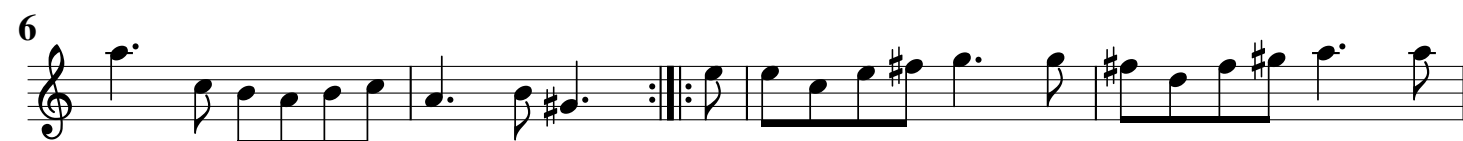
Op. 2 No. 4

Arcangelo Corelli

Preludio Adagio



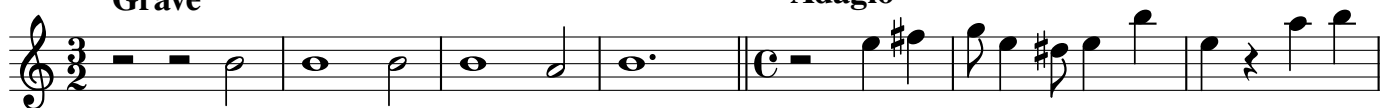
Allemanda Presto



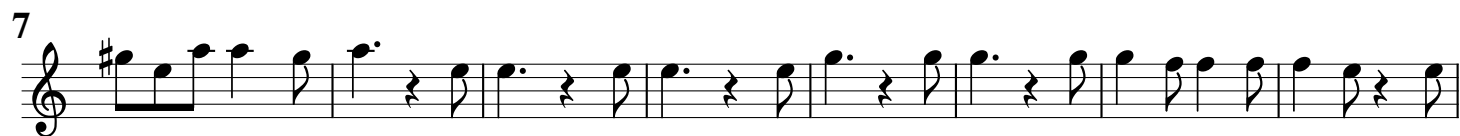
p

Grave

Adagio

*p*

Giga Allegro



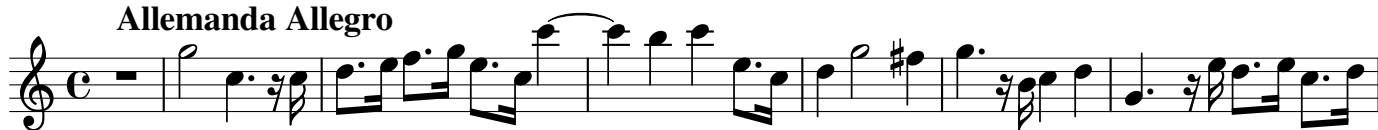
Preludio Adagio



8



Allemanda Allegro



8



14



22



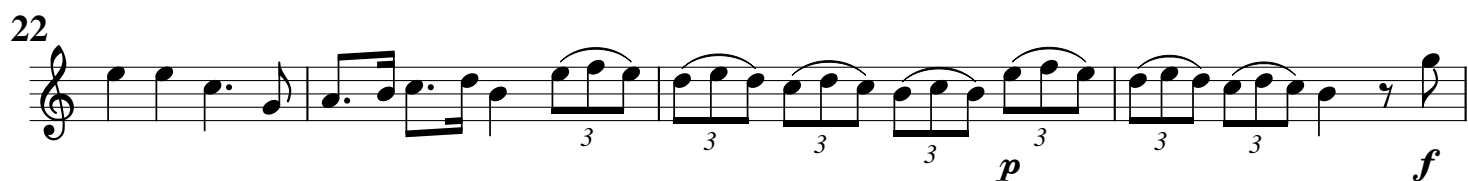
29



Sarabanda Adagio



Tempo di Gavotta Allegro



Englischhorn

Sonata da Camera

op. 2 No. 6

Arcangelo Corelli

Allemanda Largo



Musical score for Allemanda Largo, Op. 2 No. 6 by Arcangelo Corelli. The piece is in C major, common time (C), and 4/4 meter. It consists of 15 measures. The notation is in treble clef. The first measure starts with a repeat sign. The piece ends with a double bar line and repeat dots. A dynamic marking *p* (piano) is placed below the final measure.

5

9

12

15

p

Corrente Allegro



Musical score for Corrente Allegro, Op. 2 No. 6 by Arcangelo Corelli. The piece is in C major, 3/4 meter, and 4/4 meter. It consists of 20 measures. The notation is in treble clef. The first measure starts with a repeat sign. The piece ends with a double bar line and repeat dots.

9

20

Giga Allegro

[illegible][illegible]

7

Measure 7: Treble clef, 4/4 time. The melody consists of a dotted quarter note G4, an eighth rest, an eighth note A4, a quarter note B4, a quarter note A4, and a quarter note G4. The bass line consists of a dotted quarter note G3, an eighth rest, an eighth note F3, a quarter note E3, a quarter note D3, and a quarter note C3.

11



Measure 11: Treble clef, 4/4 time. The melody consists of: a dotted quarter note G4, an eighth rest, an eighth note A4, a quarter note B4, an eighth note A4, an eighth note G4, a dotted quarter note F#4, an eighth rest, an eighth note E4, a quarter note D4, an eighth note C4, an eighth note B3, a dotted quarter note A3, an eighth rest, an eighth note G3, a quarter note F#3, an eighth note E3, an eighth note D3, a dotted quarter note C3, an eighth rest, an eighth note B2, a quarter note A2, an eighth note G2, an eighth note F#2, a dotted quarter note E2.

[illegible]

19

p

[illegible][illegible]

28

p

Englischhorn

Sonata da Camera

op. 2 No. 7

Arcangelo Corelli

Preludio Adagio

7

12

18

Allemanda Allegro

8

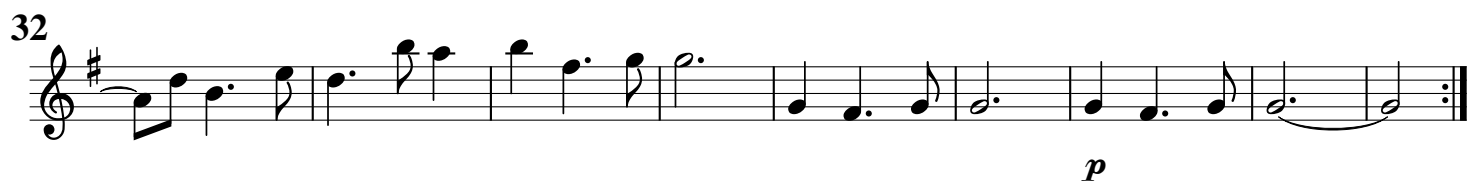
15

21

p

p

Corrente Allegro



Giga Allegro



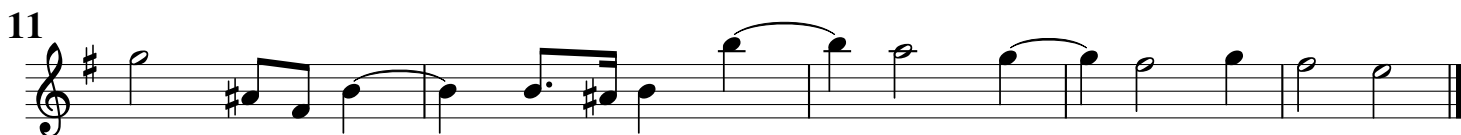
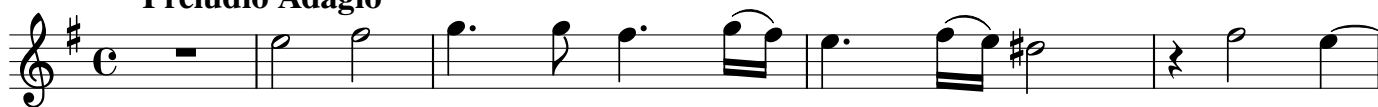
Englischhorn

Sonata da Camera

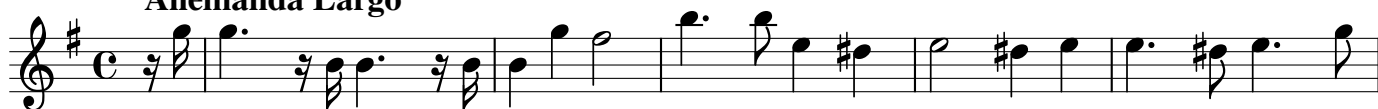
op. 2 No. 8

Arcangelo Corelli

Preludio Adagio



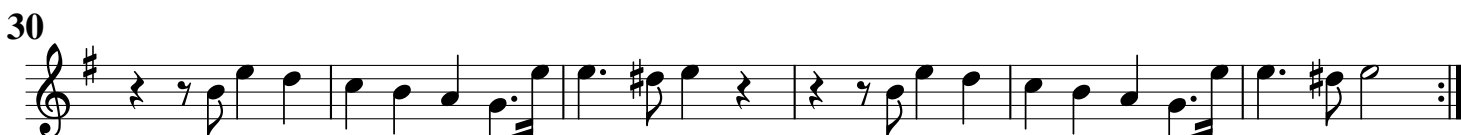
Allemanda Largo



p

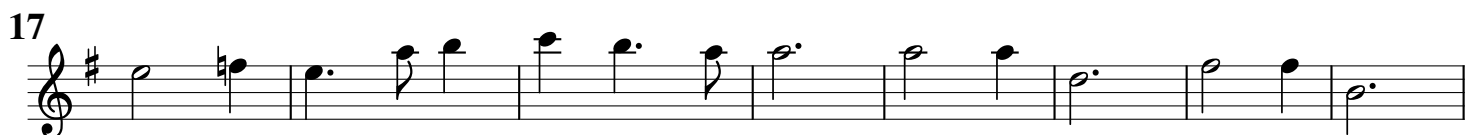
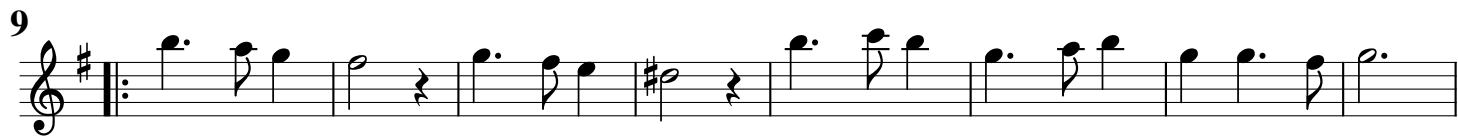


f



p

Tempo di Sarabanda Adagio



p

Tempo di Gavotta Allegro



p

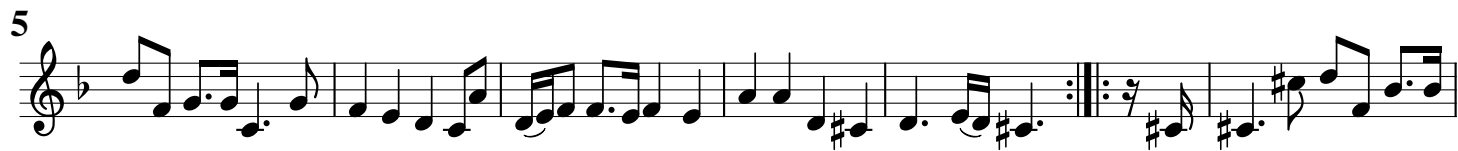
Oboe II

Sonata da Camera

op. 2 No. 9

Arcangelo Corelli

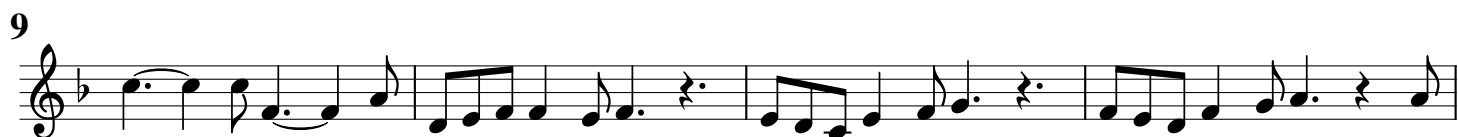
Allemanda Largo



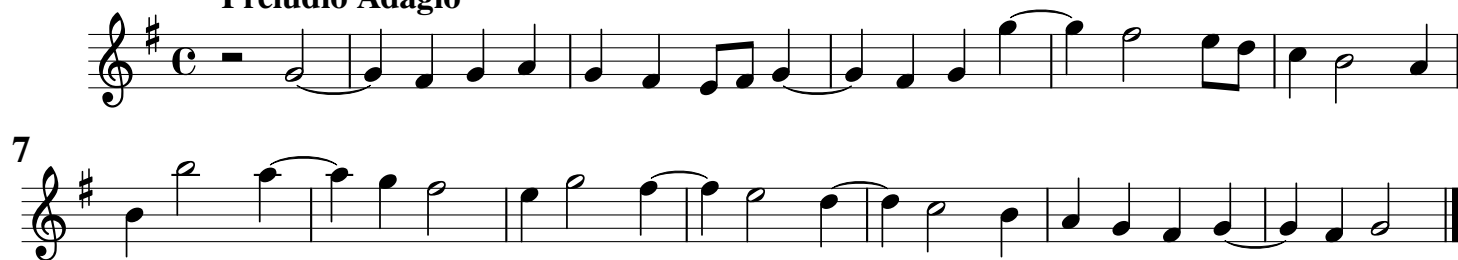
Giga Allegro



Giga Allegro



Preludio Adagio



Allemanda Allegro



Sarabanda Largo



Corrente Allegro



op. 1 No. 11

Preludio Adagio



Allemanda Presto



Giga Allegro



Oboe II

Sonata da Camera

Arcangelo Corelli

Ciaccona Largo

Op. 2 No. 12

14

24

30

41

52

64

73

83

96

103

115

p