

Oboe 1

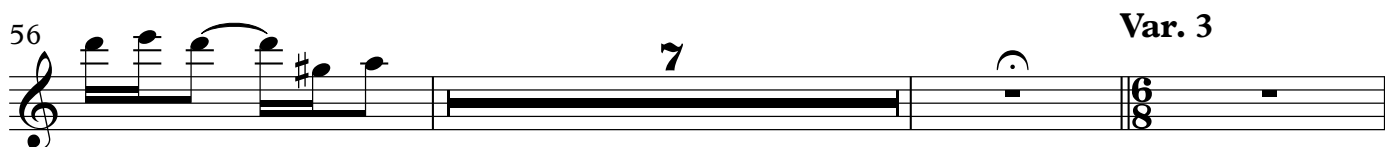
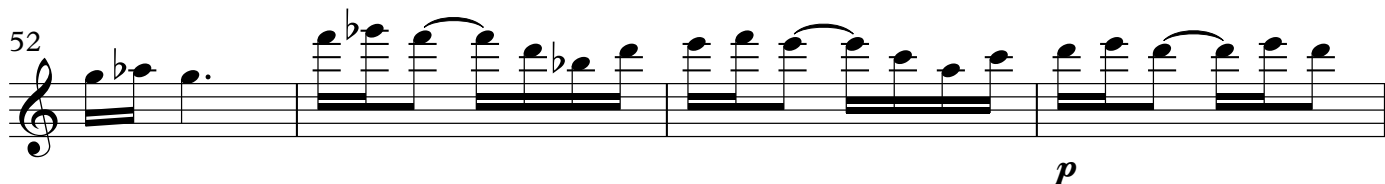
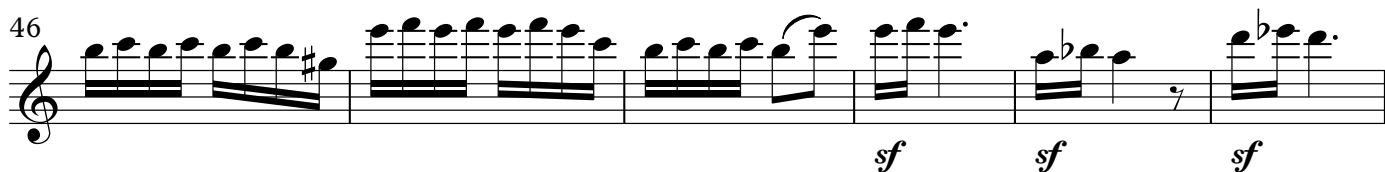
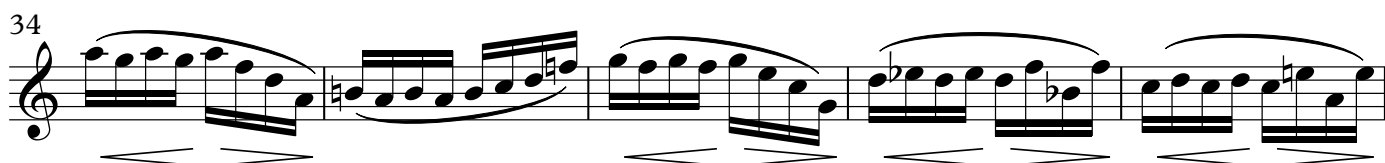
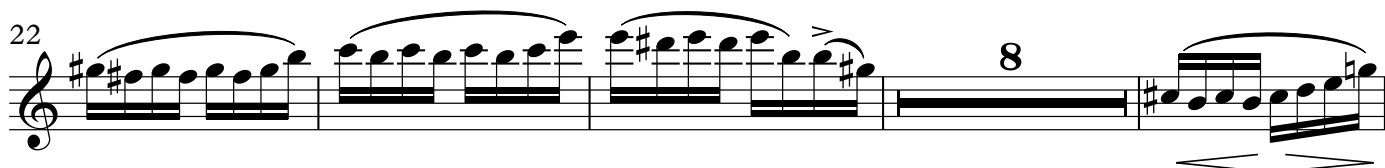
Variations on a theme of Paganini

Set 1

Brahms/Johnson

Thema

1 Non troppo presto [♩=110]



66



71



76



83



Var. 4

90



94



101



105

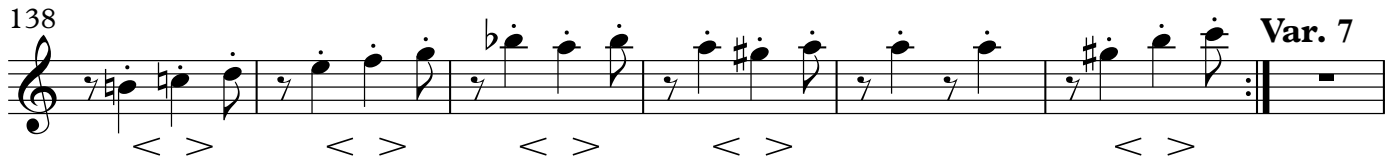
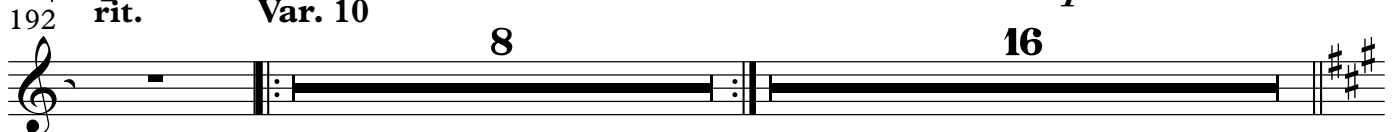
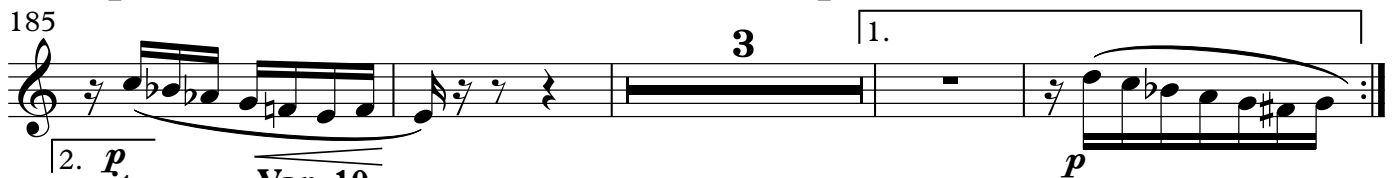
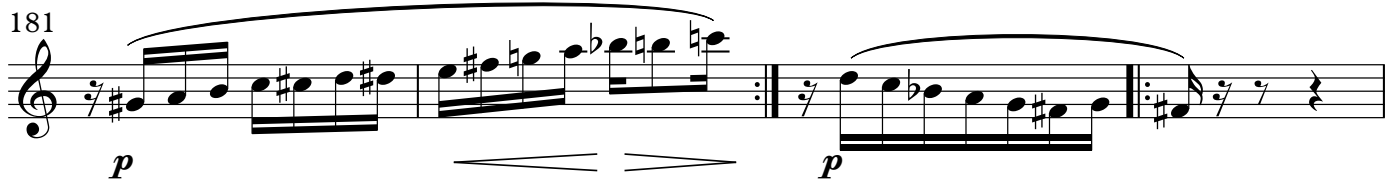


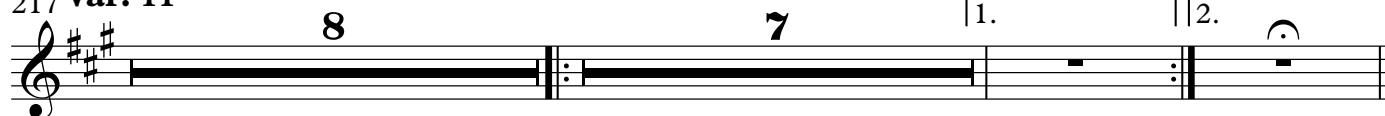
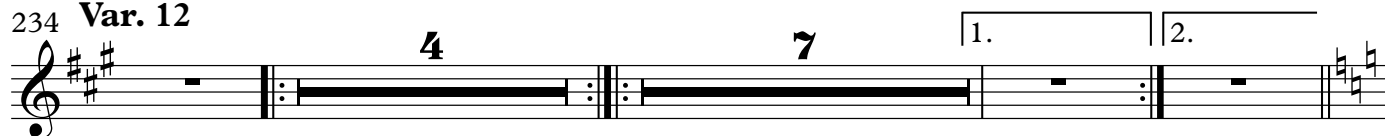
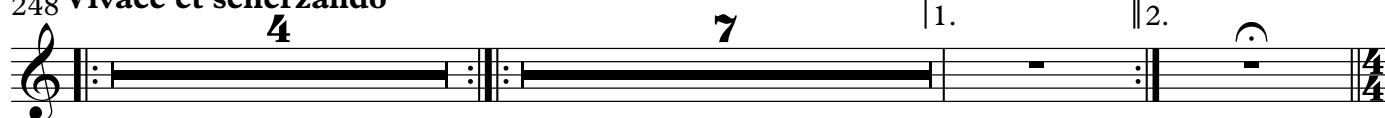
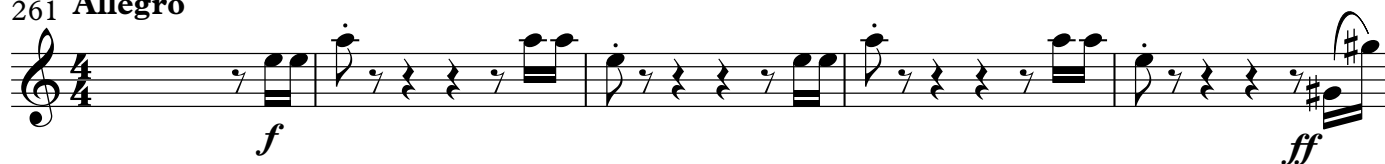
118



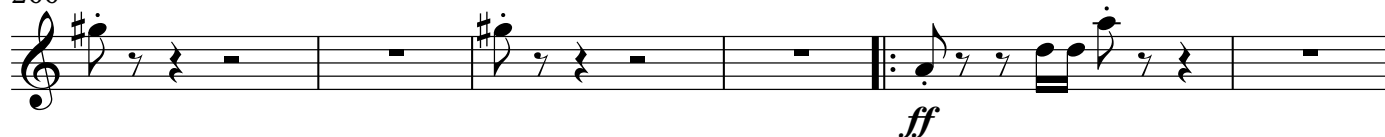
124



132 **Var. 6****Var. 8**

217 **Var. 11**234 **Var. 12****Var. 13**248 **Vivace et scherzando****Var. 14**261 **Allegro**

266



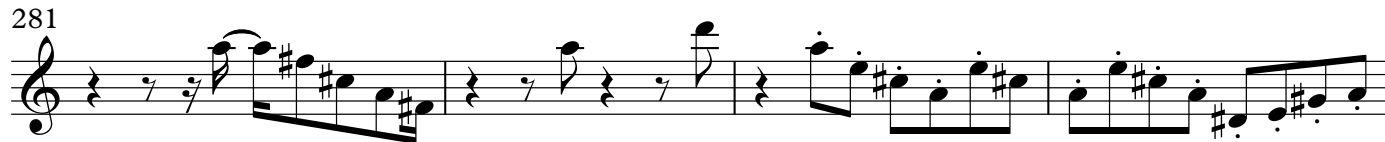
272



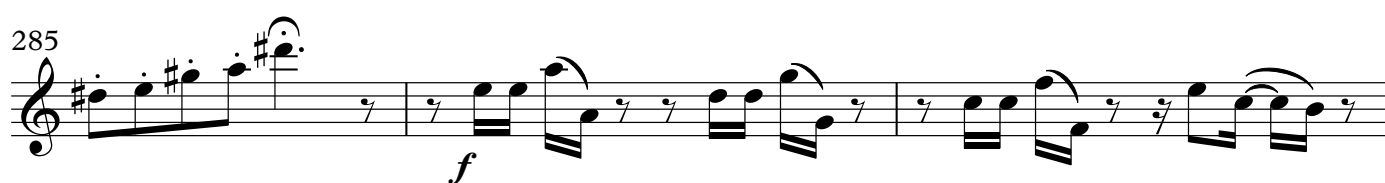
277



281



285



288



291



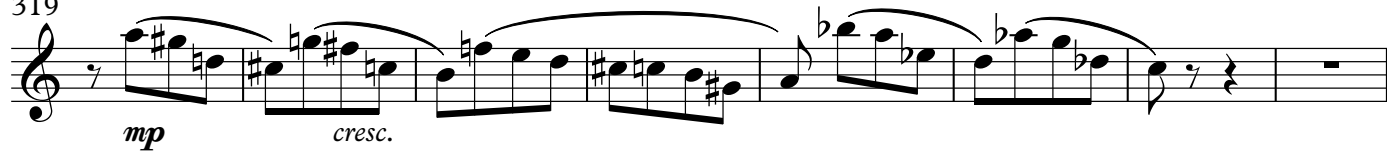
295

Presto, ma non troppo

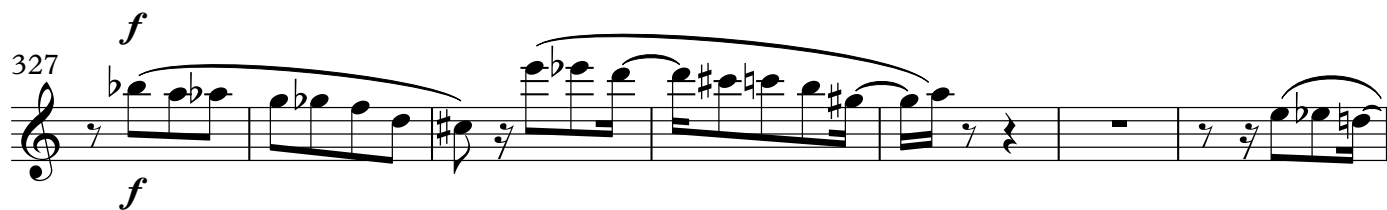
307



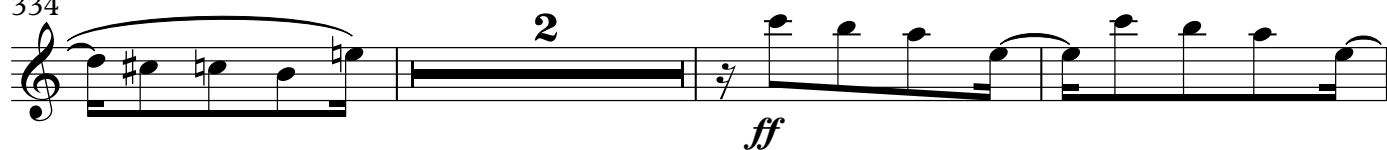
319



327



334



339



Variations on a theme of Paganini

Set 1

Brahms/Johnson

Thema

1 Non troppo presto [$\text{♩} = 110$]

65 **Var. 3**

8

sf sf

76

3

83

4

12/8

90 **Var. 4**

sf sf sf sf sf sf sf sf

94 **Var. 5**

20

p

120

126

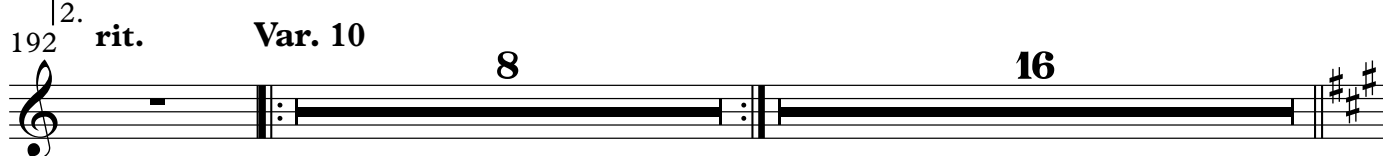
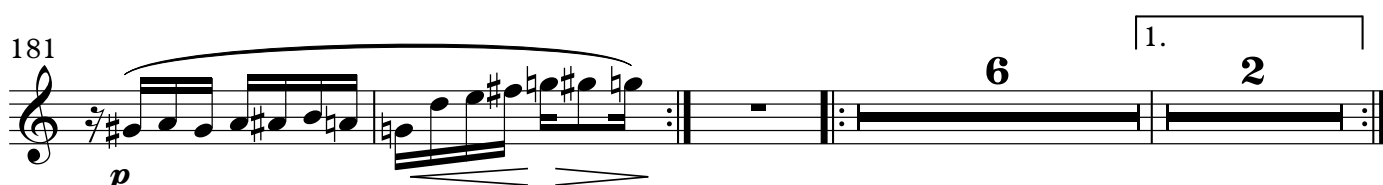
1. 2.

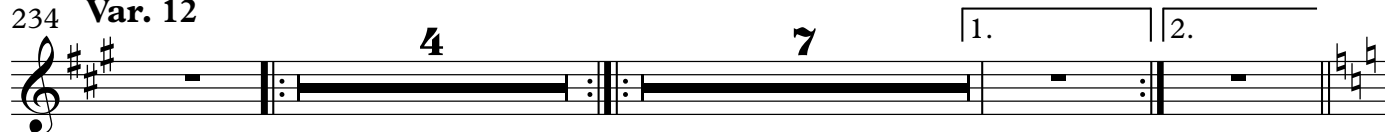
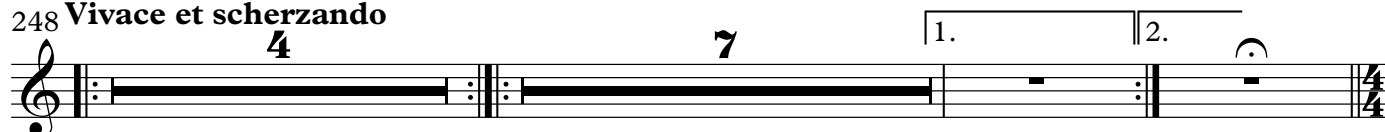
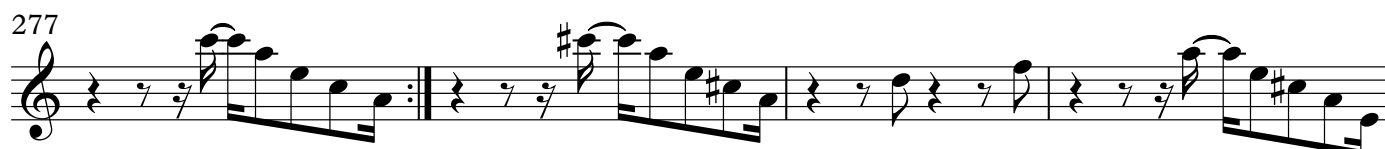
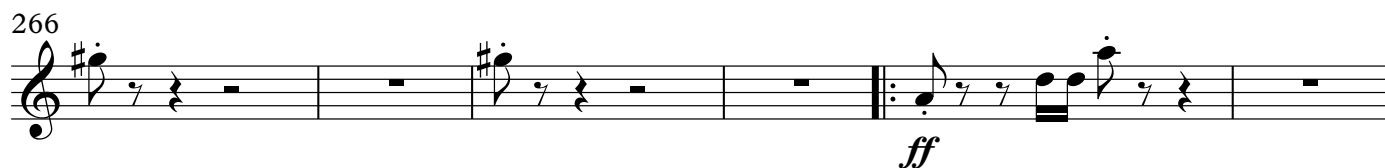
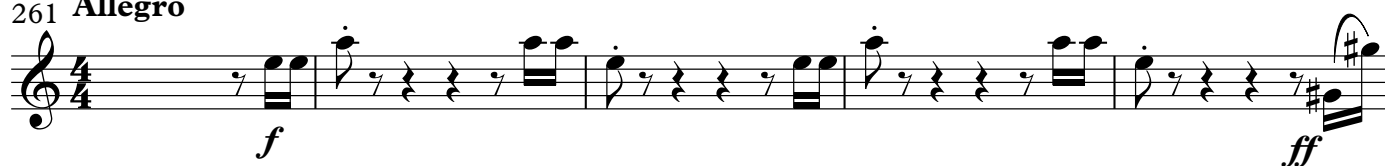
132 **Var. 6**

mp < > < > < > < > < > < >

138

< > < > < > < > < >

144 **Var. 7****Var. 8****Var. 9****Var. 10****Var. 11**

234 **Var. 12****Var. 13**
248 **Vivace et scherzando****Var. 14**
261 **Allegro**

292

sf sf sf sf

2

297 **Presto, ma non troppo**

14 6 *mp cresc.*

321

f

329

2

337

ff

2

English Horn

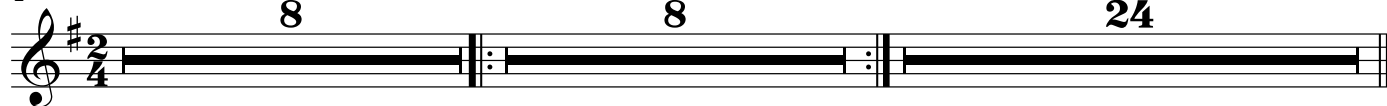
Variations on a theme of Paganini

Set 1

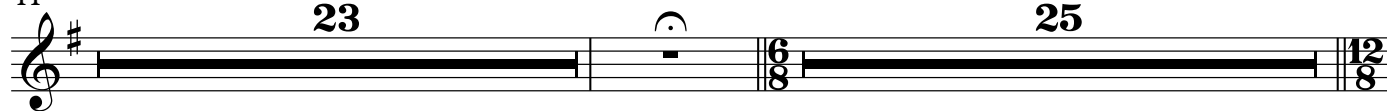
Brahms/Johnson

Thema

1 Non troppo presto [$\text{♩} = 110$] 8 8 Var. 1 24



41 Var. 2 23 Var. 3 25



90 $\text{♩} = \text{♩}$ Var. 4 24 $\text{♩} = \text{♩}$ Var. 5




120



127



132 Var. 6 4 8 Var. 7 9

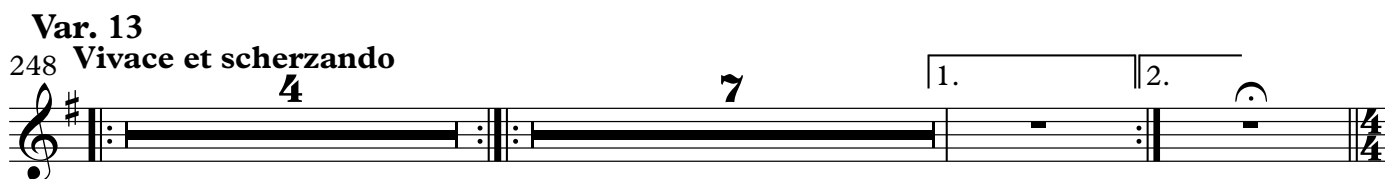
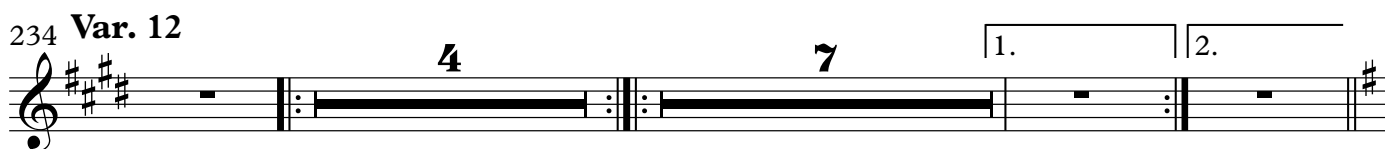
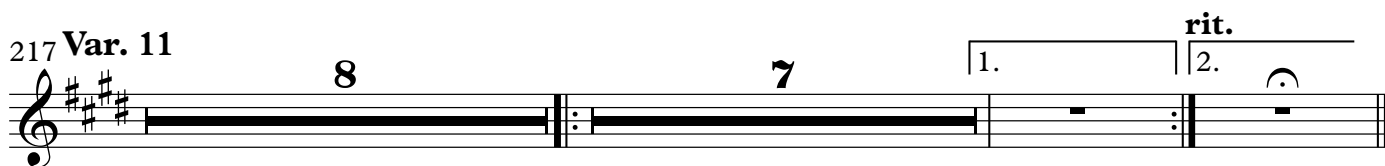
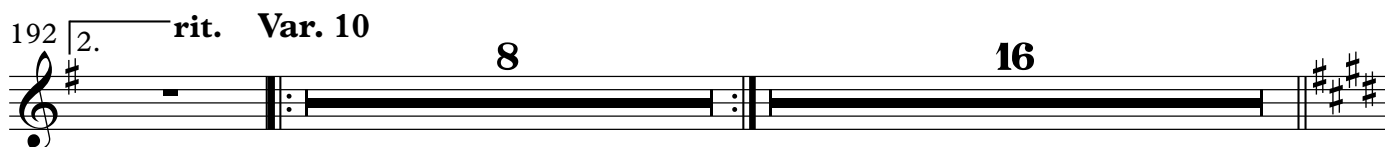
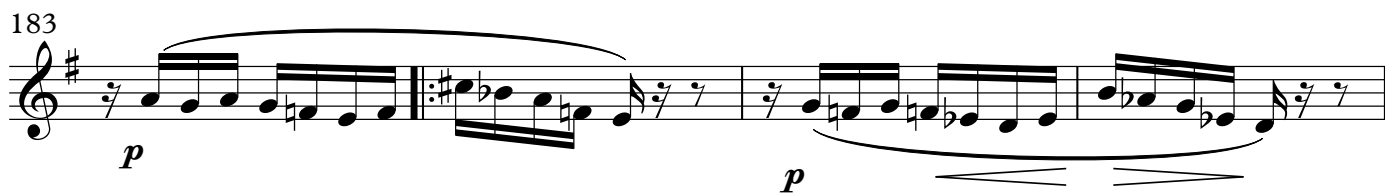
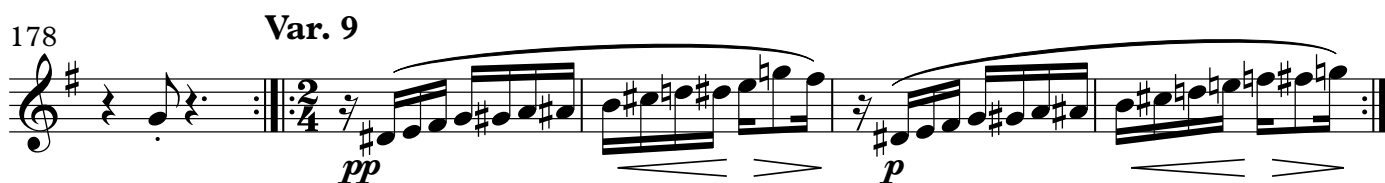


155



159 Var. 8 9





269

7

280

2

285

Measures 285-290 of the musical score. Measure 285: Treble clef, key signature of one sharp (F#), 4/4 time. The melody consists of eighth notes: F#4, G#4, A4, B4, C5, D5, followed by a quarter rest. The piano accompaniment consists of eighth notes: F#3, G#3, A3, B3, C4, D4. Measure 286: Treble clef, key signature of one sharp (F#), 4/4 time. The melody is a whole rest. The piano accompaniment consists of eighth notes: F#3, G#3, A3, B3, C4, D4. Measure 287: Treble clef, key signature of one sharp (F#), 4/4 time. The melody is a whole rest. The piano accompaniment consists of eighth notes: F#3, G#3, A3, B3, C4, D4. Measure 288: Treble clef, key signature of one sharp (F#), 4/4 time. The melody is a whole rest. The piano accompaniment consists of eighth notes: F#3, G#3, A3, B3, C4, D4. Measure 289: Treble clef, key signature of one sharp (F#), 4/4 time. The melody is a whole rest. The piano accompaniment consists of eighth notes: F#3, G#3, A3, B3, C4, D4. Measure 290: Treble clef, key signature of one sharp (F#), 4/4 time. The melody is a whole rest. The piano accompaniment consists of eighth notes: F#3, G#3, A3, B3, C4, D4.

289

Measure 289: Treble clef, key signature of one sharp (F#). The melody consists of eighth and sixteenth notes with various accidentals (sharps, naturals, and flats).

292 **Presto, ma non troppo**

The musical score for measures 292-295 is written on a single staff in treble clef with a key signature of one sharp (F#). Measure 292 begins with a quarter rest, followed by eighth notes G#4, A4, B4, and C5. Measure 293 contains a quarter rest, eighth notes D5, E5, and F#5, and a quarter note G#5. Measure 294 is a whole rest. Measure 295 is a whole rest. Above the staff, the tempo marking 'Presto, ma non troppo' is centered. Above measure 294, the number '4' is written. Above measure 295, the number '28' is written. A slur connects the eighth notes in measure 293 to the eighth notes in measure 294.

327

ff

340

The musical score for measures 340-344 is written for voice and piano. The key signature is one sharp (F#). The melody is in the voice part, and the piano accompaniment is in the piano part. The score shows a complex rhythmic pattern with many beamed notes and rests.