

Alto

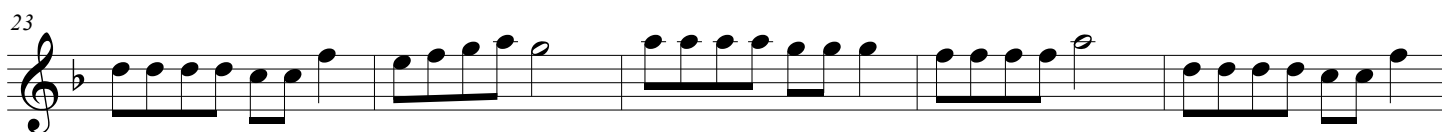
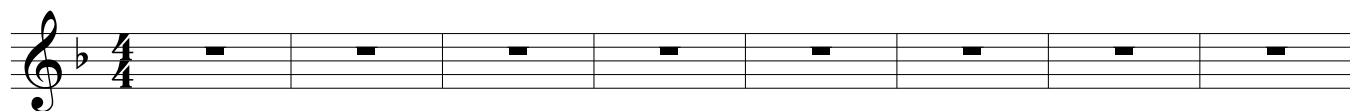
Christmas Canon

(Jolly Old St. Nicholas)

Johann Pachelbel

David Kemp

Moderato Grazioso ♩ = 76



Tenor

Christmas Canon

(Jolly Old St. Nicholas)

Johann Pachelbel

David Kemp

Moderato Grazioso ♩ = 76

12

16

20

4

27

31

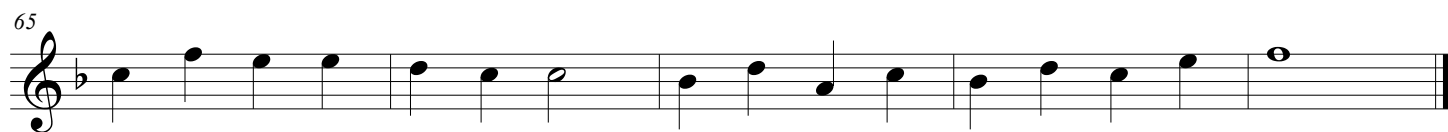
4

38

4

45

49



Christmas Canon

(Jolly Old St. Nicholas)

Johann Pachelbel

David Kemp

Moderato Grazioso ♩ = 76

8

7

12

17

23

28

33

38

44

50

55

60

66

Detailed description: This image shows five staves of musical notation for the piece 'Christmas Canon'. Each staff begins with a treble clef, a key signature of one flat (B-flat), and a common time signature (C). The first staff (measures 44-49) starts with a whole note G4, followed by eighth notes A4-B4, C5-B4, A4-G4, and a half note F#4. The second staff (measures 50-54) features a continuous eighth-note canon pattern. The third staff (measures 55-59) continues this pattern. The fourth staff (measures 60-65) includes a measure rest at the beginning, followed by a half note G4, and then eighth notes A4-B4, C5-B4, A4-G4. The fifth staff (measures 66-70) concludes with a half note G4, eighth notes A4-B4, C5-B4, A4-G4, and a final whole note G4.

Christmas Canon

(Jolly Old St. Nicholas)

Johann Pachelbel
David Kemp

Moderato Grazioso = 76

The first staff of music is in bass clef, 4/4 time, and key of B-flat major. It contains the following notes: a half note B-flat (2nd line), a quarter note D-flat (3rd space), a quarter note E-flat (4th space), a half note F (5th line), a quarter note G (1st line), a quarter note A (2nd space), a half note B-flat (2nd line), and a quarter note C (1st space).

7

[illegible]

13

19

[illegible]

25

[illegible]

31

[illegible]

37

[illegible]

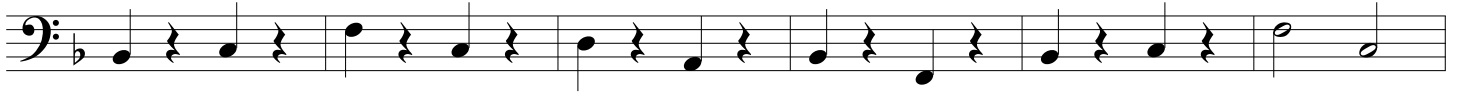
43

[illegible]

50



56



62



69

