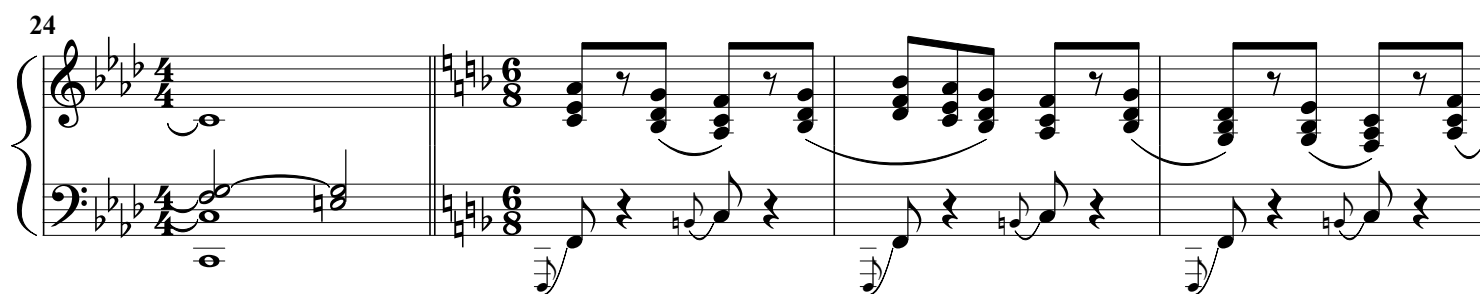
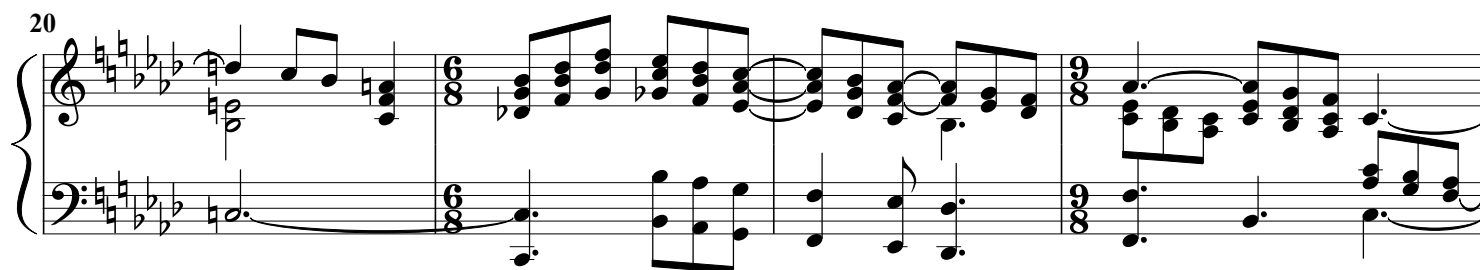
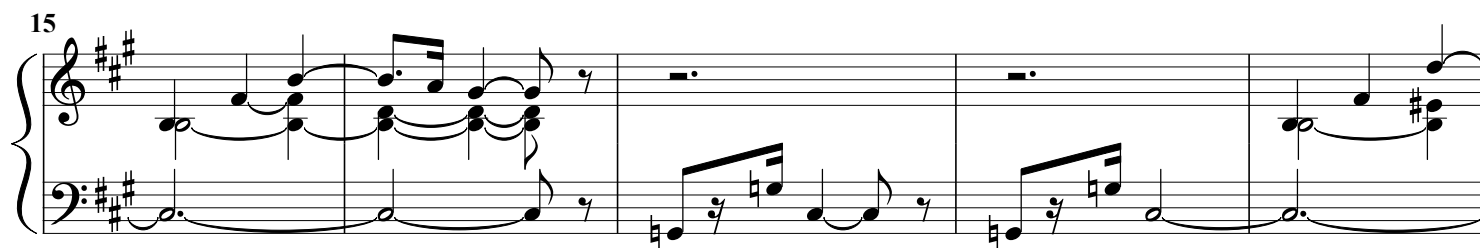
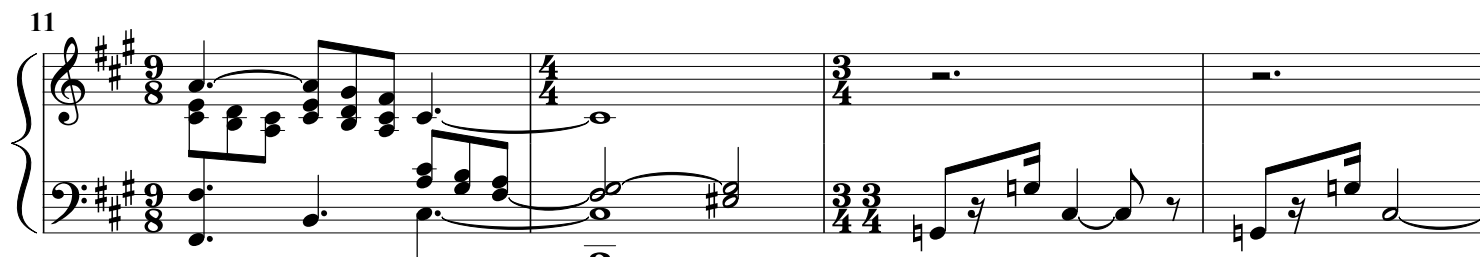
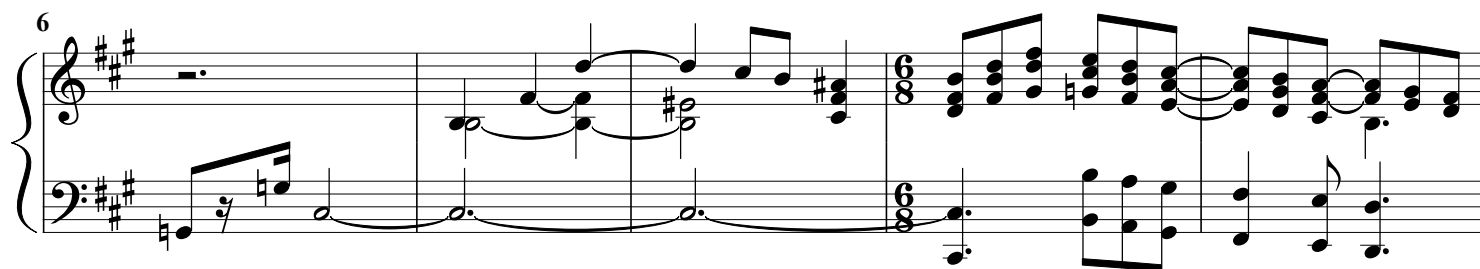
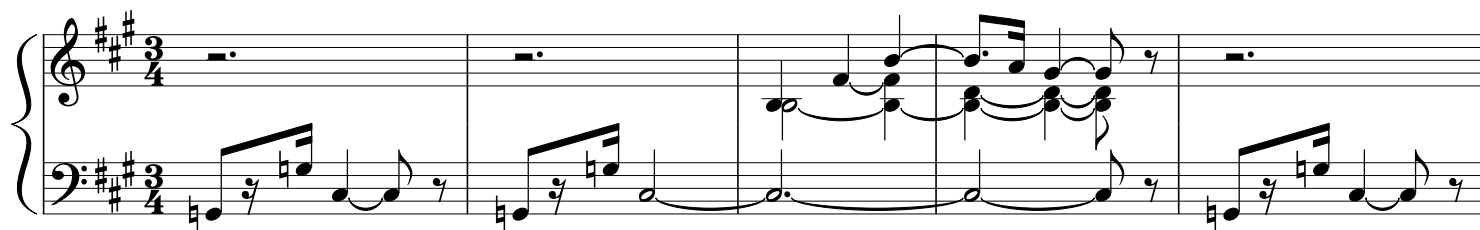


BALLADE

Jef TINEL (1885 - 1972)



28

Measures 28-31. Treble staff: Chords with eighth notes. Bass staff: Eighth notes and rests.

32

Measures 32-37. Treble staff: Chords with eighth notes. Bass staff: Eighth notes and rests.

38

Measures 38-42. Treble staff: Chords with eighth notes. Bass staff: Eighth notes and rests.

43

Measures 43-46. Treble staff: Chords with eighth notes. Bass staff: Eighth notes and rests.

47

Measures 47-50. Treble staff: Chords with eighth notes. Bass staff: Eighth notes and rests.

51

Measures 51-54. Treble staff: Chords with eighth notes. Bass staff: Eighth notes and rests.

55

Measures 55-58: Treble and bass staves. Treble staff has a melodic line with eighth and sixteenth notes, often beamed together. Bass staff has a rhythmic accompaniment with eighth and sixteenth notes. The key signature has three flats (B-flat, E-flat, A-flat).

59

Measures 59-62: Treble and bass staves. Treble staff continues the melodic line. Bass staff has a rhythmic accompaniment. The key signature has three flats (B-flat, E-flat, A-flat).

63

Measures 63-67: Treble and bass staves. Treble staff has a melodic line with eighth and sixteenth notes. Bass staff has a rhythmic accompaniment. The key signature changes to three sharps (F-sharp, C-sharp, G-sharp).

68

Measures 68-71: Treble and bass staves. Treble staff has a melodic line with eighth and sixteenth notes. Bass staff has a rhythmic accompaniment. The key signature changes to three sharps (F-sharp, C-sharp, G-sharp).

72

Measures 72-76: Treble and bass staves. Treble staff has a melodic line with eighth and sixteenth notes. Bass staff has a rhythmic accompaniment. The key signature changes to three sharps (F-sharp, C-sharp, G-sharp).

77

Measures 77-81: Treble and bass staves. Treble staff has a melodic line with eighth and sixteenth notes. Bass staff has a rhythmic accompaniment. The key signature changes to three sharps (F-sharp, C-sharp, G-sharp).

82

Measures 82-85. Treble and bass staves. Key signature: G major (one sharp). Time signature: 4/4. Measures 82-85 show complex chordal textures with many accidentals and ties. A slur covers measures 83-84.

86

Measures 86-89. Treble and bass staves. Key signature: G major. Time signature: 4/4. Measures 86-89 continue the complex chordal textures with many accidentals and ties. A slur covers measures 87-88.

90

Measures 90-95. Treble and bass staves. Key signature: G major. Time signature: 4/4. Measures 90-95 show complex chordal textures with many accidentals and ties. A slur covers measures 91-92. A 3/4 time signature change occurs at measure 93.

96

Measures 96-100. Treble and bass staves. Key signature: G major. Time signature: 4/4. Measures 96-100 show complex chordal textures with many accidentals and ties. A slur covers measures 97-98. A 6/8 time signature change occurs at measure 99.

101

Measures 101-104. Treble and bass staves. Key signature: G major. Time signature: 4/4. Measures 101-104 show complex chordal textures with many accidentals and ties. A slur covers measures 102-103. A 3/4 time signature change occurs at measure 102.

105

Measures 105-108. Treble and bass staves. Key signature: G major. Time signature: 4/4. Measures 105-108 show complex chordal textures with many accidentals and ties. A slur covers measures 106-107. A 4/4 time signature change occurs at measure 105.