

**MEERESSANG**

(De Zang der Zee)

op. 4 (1895)

**Andante sostenuto con molto espressione**

11 **A** Ob. 1 **B** *pp*

23 *pp* *mf* *ff* IV

31 (IV) **C** *ff*

37 *poco rit.* **Maestoso** *ff* 9

[41] 9

44

[46]

**D**

49

53 10

58 3

Violin I score for Brandts Buys Meeressang, measures 63-101. The score is written in treble clef with a key signature of one flat (B-flat). The music features various dynamics, articulations, and performance markings.

Measures 63-67: Melodic line with slurs and ties. Measure 65 includes a boxed letter **E**.

Measures 68-72: Continuation of the melodic line.

Measures 73-78: Melodic line starting with a piano (*p*) dynamic. Measure 76 includes the marking *cresc. poco a poco*.

Measures 79-84: Melodic line.

Measures 85-89: Melodic line starting with a fortissimo (*ff*) dynamic. Measure 85 includes a boxed letter **G**.

Measures 90-94: Melodic line featuring trills (*tr.*) and a pianissimo (*pp*) dynamic. Measure 90 includes a boxed letter **H**.

Measures 95-97: Rapid sixteenth-note passages marked with an 8 and *ppp* and *pp* dynamics.

Measures 98-100: Continuation of the rapid sixteenth-note passages, marked with an 8.

Measures 101-104: Final measures of the excerpt, marked with a *pp* dynamic and an 8.

Violin I score for 'Meeressang' by Brandts Buys, measures 104-132. The score is written for Violine I in G major (one sharp) and 4/4 time. The key signature has one sharp (F#). The score consists of nine staves of music.

Measures 104-106: A continuous eighth-note scale starting on G4, ascending to D5. A bracket labeled '8' spans measures 104-106.

Measure 107: Continuation of the eighth-note scale. A bracket labeled '8' spans measures 107-109. A box labeled 'I' is placed above measure 107. A dynamic marking *f* is placed below measure 107. A crescendo hairpin leads to a dynamic marking *pp* at the start of measure 110. A bracket labeled '7' spans measures 110-112.

Measures 110-112: Continuation of the eighth-note scale. A dynamic marking *pp* is placed below measure 110.

Measures 113-115: Continuation of the eighth-note scale. A dynamic marking *sempre pp* is placed below measure 113.

Measures 116-118: Continuation of the eighth-note scale. A dynamic marking *pp* is placed below measure 116.

Measures 119-122: Continuation of the eighth-note scale. A dynamic marking *pp* is placed below measure 119.

Measures 123-125: Continuation of the eighth-note scale. A box labeled 'K' is placed above measure 123. A dynamic marking *pp* is placed below measure 123.

Measures 126-128: Continuation of the eighth-note scale. A dynamic marking *pp* is placed below measure 126.

Measures 129-131: Continuation of the eighth-note scale. A dynamic marking *pp* is placed below measure 129.

Measure 132: Continuation of the eighth-note scale. A dynamic marking *pp* is placed below measure 132.

137 *p*

**L**

142 *f*

145

148

151

**M**

155 *7* *p* *mp* pizz.

161 arco *mf*

**N**

166 *2* pizz.

173 arco pizz. arco pizz.

179

Detailed description of the musical score: The score is for Violin I, measures 137 to 179. It is in G minor (three flats) and 4/4 time. Measure 137 starts with a half rest, followed by a quarter note G4, a quarter note A4, and a quarter note B4. Measure 138 has a half rest, followed by a quarter note C5, a quarter note D5, and a quarter note E5. Measure 139 has a half rest, followed by a quarter note F5, a quarter note G5, and a quarter note A5. Measure 140 has a half rest, followed by a quarter note B5, a quarter note C6, and a quarter note D6. Measure 141 has a half rest, followed by a quarter note E6, a quarter note F6, and a quarter note G6. Measure 142 is marked with a box 'L' and starts with a half rest, followed by a quarter note G5, a quarter note A5, and a quarter note B5. Measure 143 has a half rest, followed by a quarter note C6, a quarter note D6, and a quarter note E6. Measure 144 has a half rest, followed by a quarter note F6, a quarter note G6, and a quarter note A6. Measure 145 has a half rest, followed by a quarter note B6, a quarter note C7, and a quarter note D7. Measure 146 has a half rest, followed by a quarter note E7, a quarter note F7, and a quarter note G7. Measure 147 has a half rest, followed by a quarter note A7, a quarter note B7, and a quarter note C8. Measure 148 has a half rest, followed by a quarter note D8, a quarter note E8, and a quarter note F8. Measure 149 has a half rest, followed by a quarter note G8, a quarter note A8, and a quarter note B8. Measure 150 has a half rest, followed by a quarter note C9, a quarter note D9, and a quarter note E9. Measure 151 has a half rest, followed by a quarter note F9, a quarter note G9, and a quarter note A9. Measure 152 has a half rest, followed by a quarter note B9, a quarter note C10, and a quarter note D10. Measure 153 has a half rest, followed by a quarter note E10, a quarter note F10, and a quarter note G10. Measure 154 has a half rest, followed by a quarter note A10, a quarter note B10, and a quarter note C11. Measure 155 has a half rest, followed by a quarter note D11, a quarter note E11, and a quarter note F11. Measure 156 has a half rest, followed by a quarter note G11, a quarter note A11, and a quarter note B11. Measure 157 has a half rest, followed by a quarter note C12, a quarter note D12, and a quarter note E12. Measure 158 has a half rest, followed by a quarter note F12, a quarter note G12, and a quarter note A12. Measure 159 has a half rest, followed by a quarter note B12, a quarter note C13, and a quarter note D13. Measure 160 has a half rest, followed by a quarter note E13, a quarter note F13, and a quarter note G13. Measure 161 has a half rest, followed by a quarter note A13, a quarter note B13, and a quarter note C14. Measure 162 has a half rest, followed by a quarter note D14, a quarter note E14, and a quarter note F14. Measure 163 has a half rest, followed by a quarter note G14, a quarter note A14, and a quarter note B14. Measure 164 has a half rest, followed by a quarter note C15, a quarter note D15, and a quarter note E15. Measure 165 has a half rest, followed by a quarter note F15, a quarter note G15, and a quarter note A15. Measure 166 has a half rest, followed by a quarter note B15, a quarter note C16, and a quarter note D16. Measure 167 has a half rest, followed by a quarter note E16, a quarter note F16, and a quarter note G16. Measure 168 has a half rest, followed by a quarter note A16, a quarter note B16, and a quarter note C17. Measure 169 has a half rest, followed by a quarter note D17, a quarter note E17, and a quarter note F17. Measure 170 has a half rest, followed by a quarter note G17, a quarter note A17, and a quarter note B17. Measure 171 has a half rest, followed by a quarter note C18, a quarter note D18, and a quarter note E18. Measure 172 has a half rest, followed by a quarter note F18, a quarter note G18, and a quarter note A18. Measure 173 has a half rest, followed by a quarter note B18, a quarter note C19, and a quarter note D19. Measure 174 has a half rest, followed by a quarter note E19, a quarter note F19, and a quarter note G19. Measure 175 has a half rest, followed by a quarter note A19, a quarter note B19, and a quarter note C20. Measure 176 has a half rest, followed by a quarter note D20, a quarter note E20, and a quarter note F20. Measure 177 has a half rest, followed by a quarter note G20, a quarter note A20, and a quarter note B20. Measure 178 has a half rest, followed by a quarter note C21, a quarter note D21, and a quarter note E21. Measure 179 has a half rest, followed by a quarter note F21, a quarter note G21, and a quarter note A21.

185 **O** arco *ff*

194 *ff* *am Frosch* *ff*

200 **P** *ff* *ff*

209

214

219 *poco rit.* **Q** *Molto meno mosso* *pizz.* *arco con sord.* *p*

227 *senza sord.* **R** *pp*

242 **Tempo I** *pp* *cantando* *cresc. poco a poco*

249 **S** *9*

264 **T**

*p* *f* *p* *f*

271 IV - - - - -

*ff* *ff*

277 **U**

*tr* *tr* *pp*

282 8

285 8 *mf* *p*

289 8

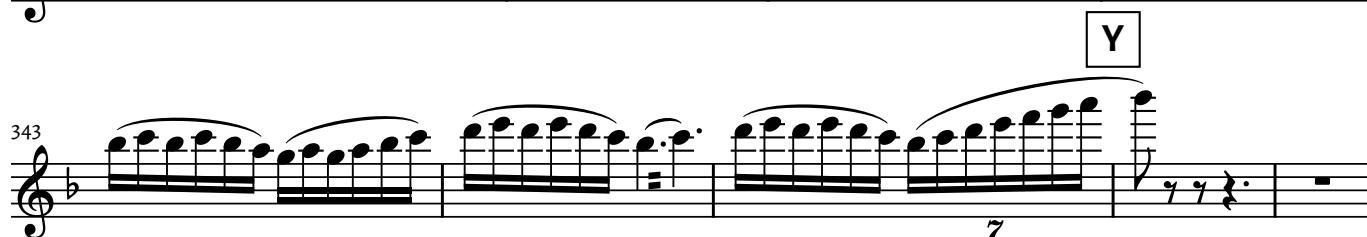
292 8

**V**

295 7

298

301 >



348

*f*

354

**Z** Maestoso

*ff* *ff*

359

*ff*

362

*ff*

365

*ff*

369

*ff*

373

*f*