

Alma de la Tierra

Fernando Giunta

1)Edem-Atuel y sus Amigos-Fiesta en la Aldea

Tranquilo $\text{♩} = 76$ rit..... a tempo 29

5 **17** **2** **29** **4**

A

rit..... a tempo 11 rit..... a tempo $\text{♩} = 116$

50 **1** **5** **11** **1**

65

68 a tempo **27** **1** **B** **17**

115 **25** rit.....a tempo **24** **C** rit.....a tempo

168 a tempo **1** **4** **D** a tempo **18** **E** Allegro $\text{♩} = 86$ **1** Trompe *mf*

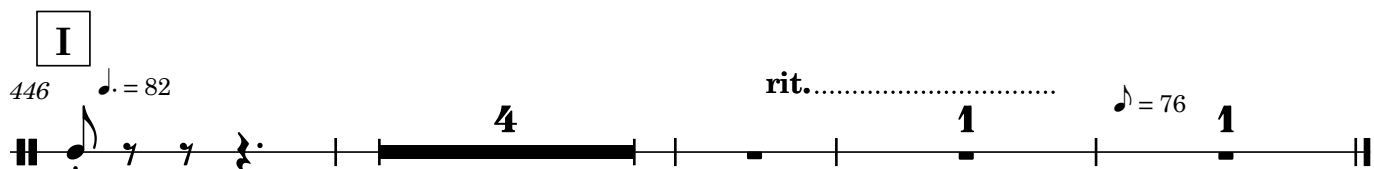
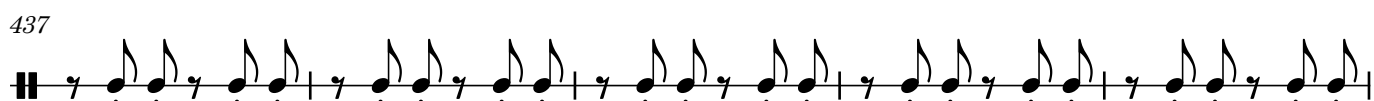
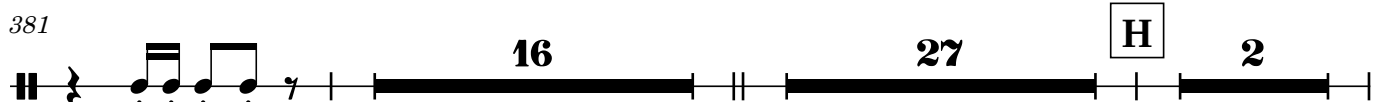
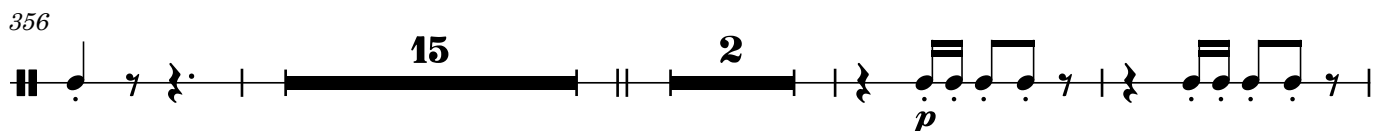
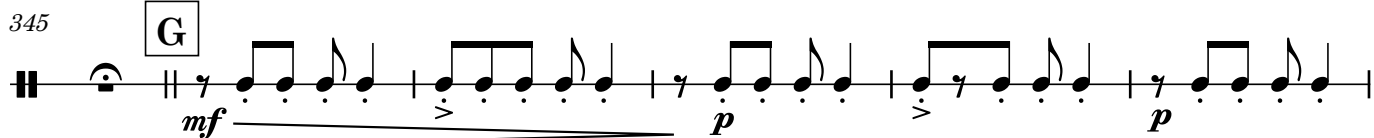
193 Trompe-Jew's harp **1** **3** *f*

201

207 **106** **F** **25** rit..... **4** rit..... **1**

.. ♩ = 30

Tamb.



Tambourine

Alma de la Tierra

Fernando Giunta

3-Guerra por las Tierras

$\text{♩} = 126$

Whip

7 1. **1** 2. **1** rit..... **1**

A **C**

12 Whip a tempo **47** **B** Yunque **7** Yunque

ff **ff** Tamb.

69 **3**

77 **12** **D** **17** **E** **25**

F

134 Látigo Tamb. **5** **p** **mp**

143 **mf** **f** **2**

G

149 **7**

159 rit..... **13** **1** **1**

176 latigo **H** Allegro justo $\text{♩} = 120$ **I** **37** **J** Yunque.

1 **2** **48** **F**

264

269 K **23** L **24**

M 319 **24** N Cbsa. *mp*

347 **10**

O 362 **15** rit.....♩ = 80 **3** **7** molto rit..... Lento **3** **1**

391 ♩ = 52 P Largo ♩ = 56 **13** Q **2** molto rit. **2** a tempo **1**

The musical score for the Tambourine part consists of five staves. The first staff (measures 269-291) features a repeating eighth-note pattern with a box 'K' above measure 285, followed by a 23-measure rest (box 'L') and a 24-measure rest. The second staff (measures 319-346) begins with a 24-measure rest (box 'M'), followed by a box 'N' above measure 325, a 'Cbsa.' marking, and a melody starting at measure 325 with a mezzo-piano (*mp*) dynamic. The third staff (measures 347-361) continues the melody and ends with a 10-measure rest. The fourth staff (measures 362-390) starts with a box 'O' above measure 362, followed by rests of 15, 3, 7, 3, and 1 measures, with tempo markings 'rit.', '♩ = 80', 'molto rit.', and 'Lento'. The fifth staff (measures 391-404) begins with a box 'P' above measure 391, a 'Largo' marking with '♩ = 56', a 13-measure rest, a box 'Q' above measure 400, a 2-measure rest, another 2-measure rest with 'molto rit.' marking, and ends with a 1-measure rest with 'a tempo' marking.

4-Tacet