



Arrangement : Alain BRUNET

Johann PACHELBEL (1653 - 1706)

2

8

12

16

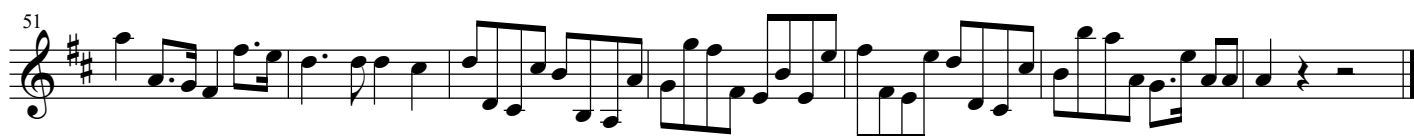
20

22

26

29

32



KANON und GIGUE

3

Arrangement : Alain BRUNET

Johann PACHELBEL (1653 - 1706)

Measures 1-5 of the musical score. The key signature is D major (two sharps). The time signature is common time (C). The score is arranged for four staves: a single treble staff at the top, and a grand staff (treble and bass) below it. Measures 1-4 contain whole rests for all parts. In measure 5, the top treble staff has a half note D4, the grand staff treble has a half note D4, and the grand staff bass has a half note D3.

Measures 6-9 of the musical score. Measure 6 begins with a measure rest in the top treble staff. In measure 7, the top treble staff has a half note E4, the grand staff treble has a half note D4, and the grand staff bass has a half note E3. In measure 8, the top treble staff has a half note F#4, the grand staff treble has a half note E4, and the grand staff bass has a half note F#3. In measure 9, the top treble staff has a half note G4, the grand staff treble has a half note F#4, and the grand staff bass has a half note G3.

Measures 10-13 of the musical score. Measure 10 begins with a measure rest in the top treble staff. In measure 11, the top treble staff has a half note A4, the grand staff treble has a half note G4, and the grand staff bass has a half note A3. In measure 12, the top treble staff has a half note B4, the grand staff treble has a half note A4, and the grand staff bass has a half note B3. In measure 13, the top treble staff has a half note C5, the grand staff treble has a half note B4, and the grand staff bass has a half note C4.

13



System 13: This system contains measures 13 through 15. The melody in the upper staff features a series of eighth-note runs in measures 13 and 14, followed by a quarter note and a half note in measure 15. The piano accompaniment in the lower staves consists of a steady eighth-note pattern in the right hand and a simple quarter-note bass line in the left hand.

16



System 16: This system contains measures 16 through 18. The melody in the upper staff has a quarter note in measure 16, followed by a quarter note and a half note in measure 17, and a quarter note and a half note in measure 18. The piano accompaniment continues with the eighth-note pattern in the right hand and the quarter-note bass line in the left hand.

19



System 19: This system contains measures 19 through 21. The melody in the upper staff features a complex, fast-moving eighth-note run in measure 19, followed by a quarter note and a half note in measure 20, and a quarter note and a half note in measure 21. The piano accompaniment remains consistent with the eighth-note pattern in the right hand and the quarter-note bass line in the left hand.

21

Measures 21-22 of a musical score in D major. The score is written for four staves: a single treble staff and a grand staff (treble and bass). Measures 21 and 22 feature a complex texture with rapid sixteenth-note runs in the upper staves and a simple bass line in the lower staff. The key signature has two sharps (F# and C#).

23

Measures 23-24 of a musical score in D major. The score is written for four staves: a single treble staff and a grand staff (treble and bass). Measures 23 and 24 feature a complex texture with rapid sixteenth-note runs in the upper staves and a simple bass line in the lower staff. The key signature has two sharps (F# and C#).

25

Measures 25-26 of a musical score in D major. The score is written for four staves: a single treble staff and a grand staff (treble and bass). Measures 25 and 26 feature a complex texture with rapid sixteenth-note runs in the upper staves and a simple bass line in the lower staff. The key signature has two sharps (F# and C#).

27



Measures 27-29 of a musical score in D major (two sharps). The score is written for four staves: a single treble staff at the top, and a grand staff (treble and bass) below. Measure 27 features a complex treble staff with sixteenth-note runs and eighth-note chords, while the grand staff provides a harmonic accompaniment with eighth and sixteenth notes. Measures 28 and 29 continue this pattern, with the treble staff becoming more active in measure 29.

30



Measures 30-32 of the musical score. Measure 30 shows a significant increase in activity in the treble staff, featuring rapid sixteenth-note passages. The grand staff continues with a steady accompaniment. Measures 31 and 32 maintain this intensity, with the treble staff playing a series of ascending and descending sixteenth-note ladders.

33



Measures 33-35 of the musical score. Measure 33 begins with a very active treble staff, characterized by continuous sixteenth-note runs. The grand staff accompaniment remains consistent. Measures 34 and 35 show the treble staff continuing its rapid sixteenth-note patterns, with some melodic variation, while the grand staff provides a solid harmonic foundation.

35

Measures 35-36 of a musical score in D major (two sharps). The score is written for four staves: a single treble staff at the top, and a grand staff (treble and bass) below. Measures 35 and 36 are marked with a repeat sign. The melody in the top staff consists of eighth-note patterns. The grand staff features a complex accompaniment with sixteenth-note runs in the treble and a simple bass line of quarter notes.

37

Measures 37-38 of the musical score. The notation continues with the same instrumental parts. Measures 37 and 38 are marked with a repeat sign. The melodic and harmonic patterns established in the previous measures continue.

39

Measures 39-40 of the musical score. In measure 39, the top staff has a melodic line with dotted rhythms, while the grand staff continues with the same accompaniment. Measure 40 is marked with a repeat sign. The piece concludes with a final chord in the grand staff.

41

Measures 41 and 42 of a musical score in D major. The score is written for four staves: Treble, Piano Right Hand (RH), Piano Left Hand (LH), and Bass. Measure 41 features a melody in the Treble staff with eighth and quarter notes, while the Piano RH and LH provide accompaniment with eighth and quarter notes. Measure 42 continues the melodic and accompanimental patterns.

43

Measures 43 and 44 of a musical score in D major. The score is written for four staves: Treble, Piano Right Hand (RH), Piano Left Hand (LH), and Bass. Measure 43 features a melody in the Treble staff with eighth and quarter notes, while the Piano RH and LH provide accompaniment with eighth and quarter notes. Measure 44 continues the melodic and accompanimental patterns.

46

Measures 46 and 47 of a musical score in D major. The score is written for four staves: Treble, Piano Right Hand (RH), Piano Left Hand (LH), and Bass. Measure 46 features a melody in the Treble staff with eighth and quarter notes, while the Piano RH and LH provide accompaniment with eighth and quarter notes. Measure 47 continues the melodic and accompanimental patterns.

49

Measures 49-52 of a musical score in D major (two sharps). The score is written for four staves: a single treble staff at the top, and a grand staff (treble and bass) below. The melody in the top treble staff features eighth and quarter notes. The grand staff provides harmonic support with chords and moving lines in both hands. Measure 52 ends with a double bar line.

53

Measures 53-56 of the musical score. The notation continues across the four staves. Measures 54 and 55 show more complex rhythmic patterns in the melody, including sixteenth notes. Measure 56 concludes the system with a double bar line.

58

Measures 58-60 of the musical score. Measure 58 begins with a 12/8 time signature change. The melody in the top treble staff has a long rest for the first two measures. The grand staff continues with active accompaniment. Measure 60 ends with a double bar line.

61

Measures 61-63 of a musical score in D major. Measure 61 features a treble staff with eighth-note runs and a bass staff with a steady eighth-note accompaniment. Measure 62 continues the treble staff's melodic line with a repeat sign, while the bass staff maintains its accompaniment. Measure 63 shows the treble staff concluding with a whole note, and the bass staff with a half note and a quarter rest.

64

Measures 64-67 of a musical score in D major. Measure 64 has a treble staff with eighth-note runs and a bass staff with a steady eighth-note accompaniment. Measure 65 continues the treble staff's melodic line with a repeat sign, while the bass staff maintains its accompaniment. Measure 66 shows the treble staff concluding with a whole note, and the bass staff with a half note and a quarter rest. Measure 67 shows the treble staff concluding with a whole note, and the bass staff with a half note and a quarter rest.

68

Measures 68-70 of a musical score in D major. Measure 68 features a treble staff with a whole rest and a bass staff with a steady eighth-note accompaniment. Measure 69 continues the treble staff's whole rest, while the bass staff maintains its accompaniment. Measure 70 shows the treble staff concluding with a whole note, and the bass staff with a half note and a quarter rest.

71

Measures 71-73 of a musical score in D major. The score is written for four staves: a single treble staff at the top, and a grand staff (treble and bass) below. Measure 71 features a treble staff with eighth and quarter notes, and a grand staff with a steady eighth-note accompaniment. Measure 72 continues the melodic and harmonic development. Measure 73 concludes the system with a final chord in the treble and a sustained bass line.

74

Measures 74-77 of a musical score in D major. The score is written for four staves: a single treble staff at the top, and a grand staff (treble and bass) below. Measure 74 begins with a treble staff featuring a melodic line and a grand staff with a rhythmic accompaniment. Measures 75 and 76 continue the piece with complex melodic patterns in the treble and active bass lines. Measure 77 ends the system with a double bar line and repeat dots in all staves.