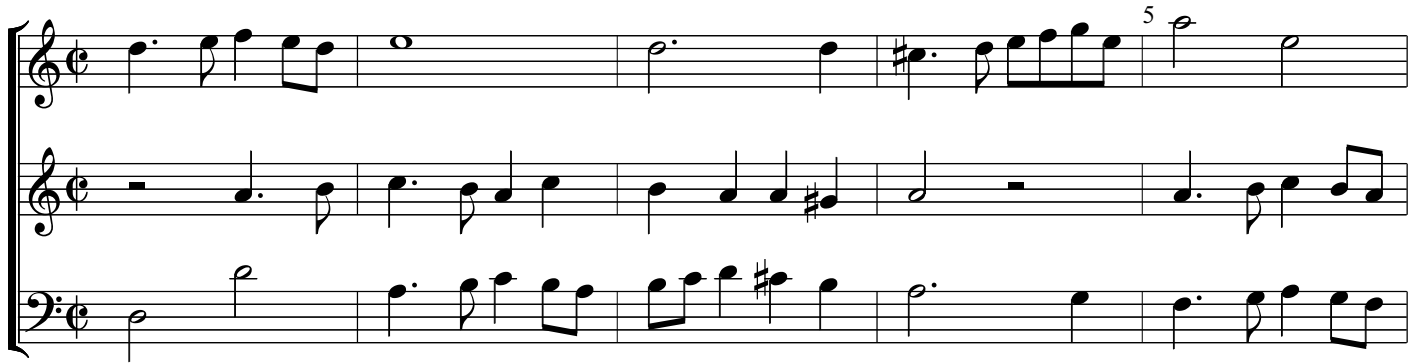


Fantasia

VdGS No. 6

Orlando Gibbons (c. 1620)



20

This system contains measures 20 through 24. The top staff (treble clef) begins with a measure rest, followed by a melodic line starting on G4, moving up stepwise to A4, B4, and C5, with some chromatic alterations. The middle staff (treble clef) provides harmonic support with chords and single notes. The bottom staff (bass clef) features a steady eighth-note accompaniment in the left hand.

25

This system contains measures 25 through 29. The top staff continues the melodic line with a half-note rest in measure 28. The middle staff has a measure rest in measure 25, followed by a more active eighth-note accompaniment. The bottom staff continues the eighth-note accompaniment with some chromatic movement.

30

This system contains measures 30 through 34. The top staff features a long, flowing melodic line with a half-note rest in measure 31. The middle and bottom staves continue the accompaniment, with the middle staff showing more complex rhythmic patterns.

35

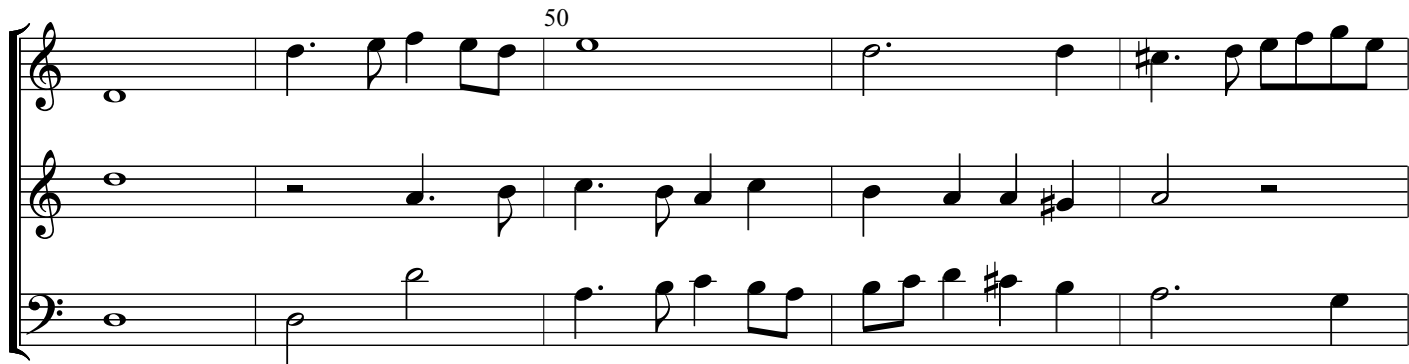
This system contains measures 35 through 39. The top staff has a measure rest in measure 36, followed by a melodic line. The middle and bottom staves provide a consistent accompaniment throughout the system.



First system of a musical score, measures 37-40. The system consists of three staves: Treble, Treble, and Bass. Measure 37: Treble 1 has a half note G4, Treble 2 has a half note F#4, Bass has a half note G3. Measure 38: Treble 1 has a half note A4, Treble 2 has a half note G4, Bass has a half note A2. Measure 39: Treble 1 has a half note B4, Treble 2 has a half note A4, Bass has a half note B2. Measure 40: Treble 1 has a half note C5, Treble 2 has a half note B4, Bass has a half note C3. A slur with the number 40 is above the Treble 1 staff in measure 40.



Second system of a musical score, measures 41-45. The system consists of three staves: Treble, Treble, and Bass. Measure 41: Treble 1 has a half note D5, Treble 2 has a half note C5, Bass has a half note D3. Measure 42: Treble 1 has a half note E5, Treble 2 has a half note D5, Bass has a half note E3. Measure 43: Treble 1 has a half note F5, Treble 2 has a half note E5, Bass has a half note F3. Measure 44: Treble 1 has a half note G5, Treble 2 has a half note F5, Bass has a half note G3. Measure 45: Treble 1 has a half note A5, Treble 2 has a half note G5, Bass has a half note A3. A slur with the number 45 is above the Treble 1 staff in measure 45.



Third system of a musical score, measures 46-50. The system consists of three staves: Treble, Treble, and Bass. Measure 46: Treble 1 has a half note B5, Treble 2 has a half note A5, Bass has a half note B3. Measure 47: Treble 1 has a half note C6, Treble 2 has a half note B5, Bass has a half note C4. Measure 48: Treble 1 has a half note D6, Treble 2 has a half note C6, Bass has a half note D4. Measure 49: Treble 1 has a half note E6, Treble 2 has a half note D6, Bass has a half note E4. Measure 50: Treble 1 has a half note F6, Treble 2 has a half note E6, Bass has a half note F4. A slur with the number 50 is above the Treble 1 staff in measure 50.



Fourth system of a musical score, measures 51-55. The system consists of three staves: Treble, Treble, and Bass. Measure 51: Treble 1 has a half note G6, Treble 2 has a half note F6, Bass has a half note G4. Measure 52: Treble 1 has a half note A6, Treble 2 has a half note G6, Bass has a half note A4. Measure 53: Treble 1 has a half note B6, Treble 2 has a half note A6, Bass has a half note B4. Measure 54: Treble 1 has a half note C7, Treble 2 has a half note B6, Bass has a half note C5. Measure 55: Treble 1 has a half note D7, Treble 2 has a half note C7, Bass has a half note D5. A slur with the number 55 is above the Treble 1 staff in measure 55.