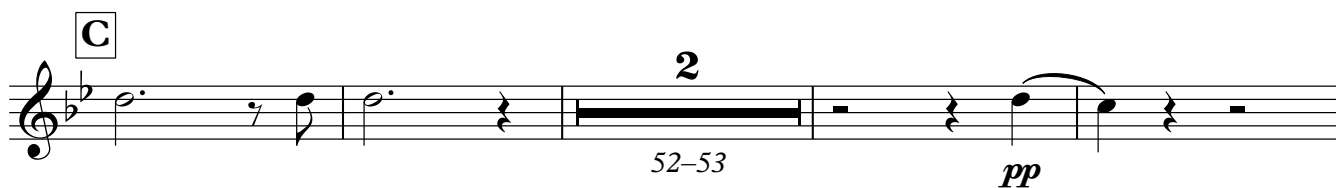
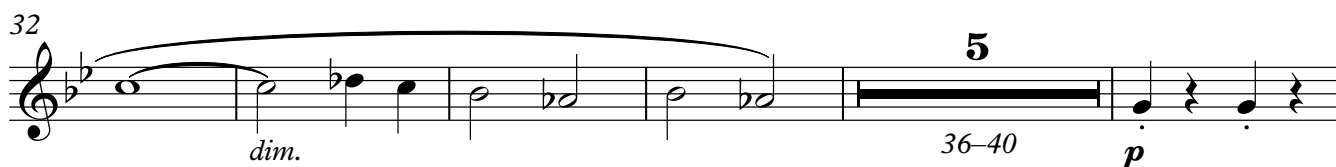
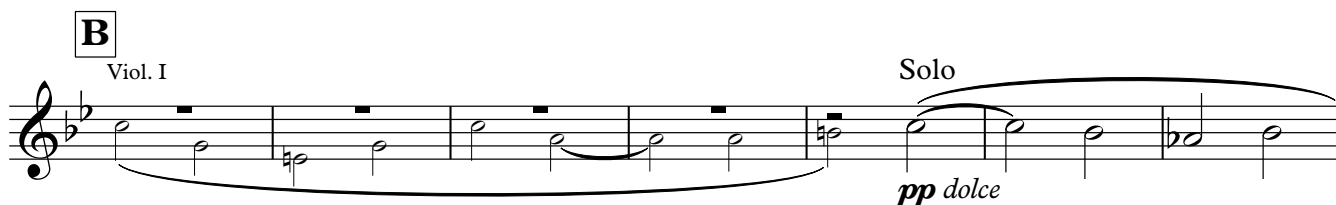
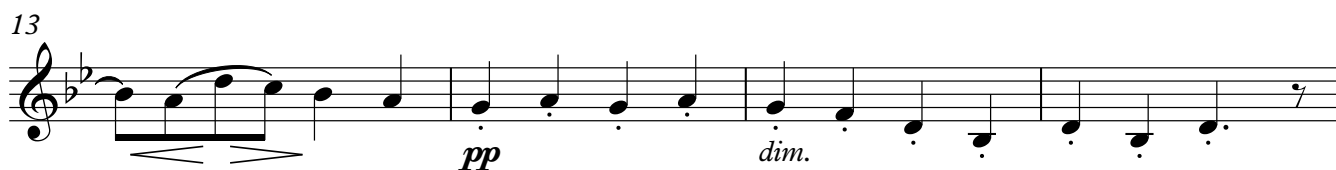


Horn I in F

Academic Festival Overture

Johannes Brahms

Allegro

64

p dolce *p*

72

D

cresc. poco a poco

88 **L'istesso tempo, un poco maestoso**

ff *marc.*

94

marc.

100

106 **Solo**

p

112 **E**

3 *114-116* *p*

4 **3**

119-122 *f* *124-126*

F

10 *2* *127-136* *137-138* *Hr. III*

13 **Fag. I**

143-155 *animato*

8
161-168
Fag. I >
f

175
7
181-187

G
14
188-201
Fag. I

H
4
211-214
p
3
219-221
p cresc.

225
4
8
ff

234

241
f
f

248
f

253
I
f

258
gestopft
poco f
offen
dim.

264
p
2
270-271

272

p *cresc.*

K

f

283

sf *sf* *sf*

290

f *ff*

297

303

cresc.

309

L

fp *p*

315

M

mp espress.

330

dim. *4* 332-335 *p* *dim.*

338

4 342-345

Horn I in F

5

8
346-353
Ob. I
p cresc.

362
8
ff

371
sf

379 *Maestoso*

385

392

397

Horn II in F

Academic Festival Overture

Johannes Brahms

Allegro

6-7

2

pp

8

Solo

molto p

12

2

pp

15-16

A

pp

3

22-24

B

12

Fag. I

25-36

p

42

3

46-48

f

p

C

12

52-63

64

Hn. I

p

72

Horn II in F

79 **D**

cresc. poco a poco

87 **L'istesso tempo, un poco maestoso**

ff marc.

93

99

marc.

105 **Solo**

p

111 **E**

114-116

117

p f 119-122 124-126

F

127-136 137-138

13

143-155

8

161-168 f

Horn II in F

3

175

181-187

G 22 **H** 5 Hn. I 3

188-209 210-214 219-221 *p cresc.*

223

4 8 *ff*

233

241

f *f*

248

f

253

I *f*

258

gestopft *poco f* *dim.* offen

264

2 270-271 *p*

272

p *cresc.*

K

f

283

sf *sf* *sf*

290

f *ff*

297

303

cresc.

L

310

fp *p*

318

M

2 21

320-321 325-345

8 Ob. I 4

346-353 *p cresc.*

362

8 *ff*

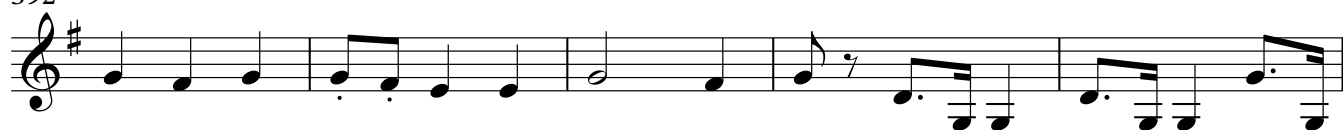
371

379 *Maestoso*

385



392



397



Horn III in F

Academic Festival Overture

Johannes Brahms

Allegro

A 16 8

1-16 17-24

B 12 Fag. I Hn. I

25-36

42 *mf* *f* *f*

46 *p*

C 12

52-63

64 Hn. I

72 *p dolce*

D *cresc. poco a poco*

79

L'istesso tempo, un poco maestoso

87 7 2

88-94 *f* 98-99

100 *marc.* 9

104-112

Horn III in F

E

4 Hn. II 4 Hn. I

113–116 119–122 *f*

125 *fp* *p*

131

F

p *dim.* 4 143–146

147 *p* *espress.* 3 153–155

156 Fag. I 13 Hn. I 161–173

175 2 179–180 *f* 3 3 3 3

183 3 3 3 3 3 3 3

G 21 **H** 5 Hn. I 3 189–209 210–214 219–221

222 4 8 *p cresc.* *ff*

232 4

241 **11** *f* 244–254

I **3** Hn. I (gest.) *offen* 255–257

263 *gestopft* *p* **K** **7** **4** Hn. I II *offen* **2** 270–276 277–280 283–284 *f* *sf*

286 **2** *sf* 288–289 *f*

4 293–296

302 *cresc.*

307 **2** 310–311

L **10** **M** **2** Hn. I 312–321 322–323

329 **12** *p dolce* 334–345

12 346–357

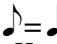
Horn III in F

358 Hn. I II

ff

369

371-373 sf sf

379  **Maestoso**
Hn. I II

381-386 ff

390

ff

396

ff

Horn IV in F

Academic Festival Overture

Johannes Brahms

Allegro

A 16 8
1-16 17-24

B 12 Fag. I Hn. I
25-36

42 *mf* *f* *f*

46 *p*

C 12
52-63

64 Hn. I

72 *p dolce*

D *cresc. poco a poco*

L'istesso tempo, un poco maestoso

7 88-94 *f*

2 11 98-99 *marc.* 102-112

Horn IV in F

E

113–116 **4** Hn. II

119–122 **4** Hn. I

f

125

fp *p*

F

133 **2**

135–136

p

140 **13**

143–155

dim.

Fag. I

157 **13** Hn. I

161–173

animato *f*

177 **2**

179–180

f

G

185 **21**

189–209

H

210–214 **5** Hn. I

219–221 **3**

p cresc.

226 **8**

ff

234 **4**

241 **11**
244–254
f

I **3** Hn. I (gest.) *offen*
255–257

263 *gestopft*
p *offen* **2**
Hn. I II
270–276 277–280 283–284
f *sf*

286 **2** 288–289 *f*

4 293–296

302 *cresc.*

307 **4** **L** **10**
308–311 312–321

M **24** **12** Hn. I II
322–345 346–357 ₄

363 *ff* **3**
371–373

Horn IV in F

374

sf *sf*

379 *Maestoso*
Hn. I II

6

381-386

ff

390

396