

Alessandro Grego

Aire

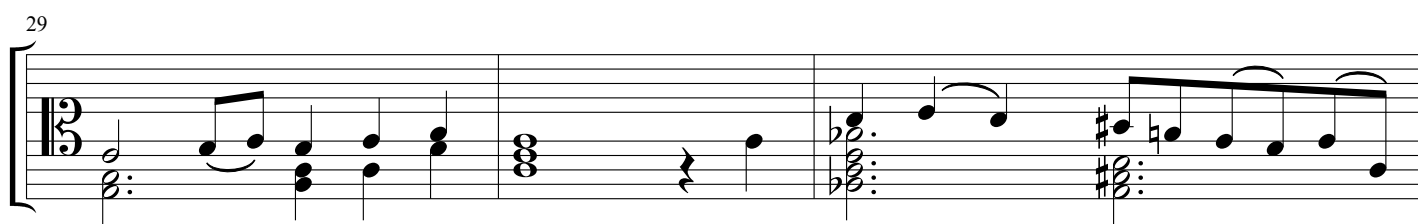
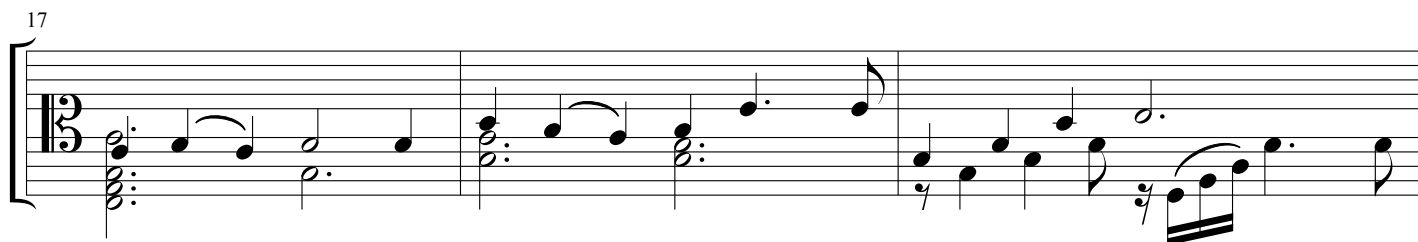
per viola sola

Aire

Adagio

Alessandro Grego

The musical score for 'Aire' by Alessandro Grego is written in 6/4 time and consists of five systems of music. The first system begins with a treble clef and a key signature of one flat (B-flat). The tempo is marked 'Adagio'. The score features a variety of musical notations, including eighth and sixteenth notes, rests, and dynamic markings such as 'p' (piano) and 'f' (forte). The second system starts at measure 5 and includes a key signature change to two flats (B-flat and E-flat). The third system starts at measure 8 and features a fermata over the first measure. The fourth system starts at measure 11 and continues the melodic and harmonic development. The fifth system starts at measure 14 and concludes the piece with a final cadence. The score is presented in a clear, professional layout with standard musical notation.



35

Measures 35-37. Measure 35: Bass clef, 3/4 time signature. Treble staff has a half note G4, a half note F#4, and a half note E4. Bass staff has a quarter note G2, a quarter note F#2, and a quarter note E2. Measure 36: Treble staff has a half note D4, a half note C4, and a half note B3. Bass staff has a quarter note D2, a quarter note C2, and a quarter note B1. Measure 37: Treble staff has a half note A3, a half note G3, and a half note F#3. Bass staff has a quarter note A1, a quarter note G1, and a quarter note F#1. The word "Pizz." is written below the first measure.

38

Measures 38-40. Measure 38: Treble staff has a half note G4, a half note F#4, and a half note E4. Bass staff has a quarter note G2, a quarter note F#2, and a quarter note E2. Measure 39: Treble staff has a half note D4, a half note C4, and a half note B3. Bass staff has a quarter note D2, a quarter note C2, and a quarter note B1. Measure 40: Treble staff has a half note A3, a half note G3, and a half note F#3. Bass staff has a quarter note A1, a quarter note G1, and a quarter note F#1.

41

Measures 41-43. Measure 41: Treble staff has a half note G4, a half note F#4, and a half note E4. Bass staff has a quarter note G2, a quarter note F#2, and a quarter note E2. Measure 42: Treble staff has a half note D4, a half note C4, and a half note B3. Bass staff has a quarter note D2, a quarter note C2, and a quarter note B1. Measure 43: Treble staff has a half note A3, a half note G3, and a half note F#3. Bass staff has a quarter note A1, a quarter note G1, and a quarter note F#1.

45

Measures 45-47. Measure 45: Treble staff has a half note G4, a half note F#4, and a half note E4. Bass staff has a quarter note G2, a quarter note F#2, and a quarter note E2. Measure 46: Treble staff has a half note D4, a half note C4, and a half note B3. Bass staff has a quarter note D2, a quarter note C2, and a quarter note B1. Measure 47: Treble staff has a half note A3, a half note G3, and a half note F#3. Bass staff has a quarter note A1, a quarter note G1, and a quarter note F#1.

48

Measures 48-50. Measure 48: Treble staff has a half note G4, a half note F#4, and a half note E4. Bass staff has a quarter note G2, a quarter note F#2, and a quarter note E2. Measure 49: Treble staff has a half note D4, a half note C4, and a half note B3. Bass staff has a quarter note D2, a quarter note C2, and a quarter note B1. Measure 50: Treble staff has a half note A3, a half note G3, and a half note F#3. Bass staff has a quarter note A1, a quarter note G1, and a quarter note F#1.

51

Measures 51-53. Measure 51: Treble staff has a half note G4, a half note F#4, and a half note E4. Bass staff has a quarter note G2, a quarter note F#2, and a quarter note E2. Measure 52: Treble staff has a half note D4, a half note C4, and a half note B3. Bass staff has a quarter note D2, a quarter note C2, and a quarter note B1. Measure 53: Treble staff has a half note A3, a half note G3, and a half note F#3. Bass staff has a quarter note A1, a quarter note G1, and a quarter note F#1.

54

Arco

58

61

64

68

71

74