

W. A. Mozart

Sinfonia N°6

KV 43

Bassoon 2

Bassoon 2

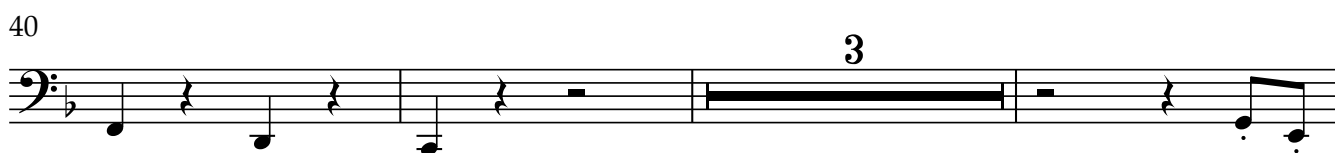
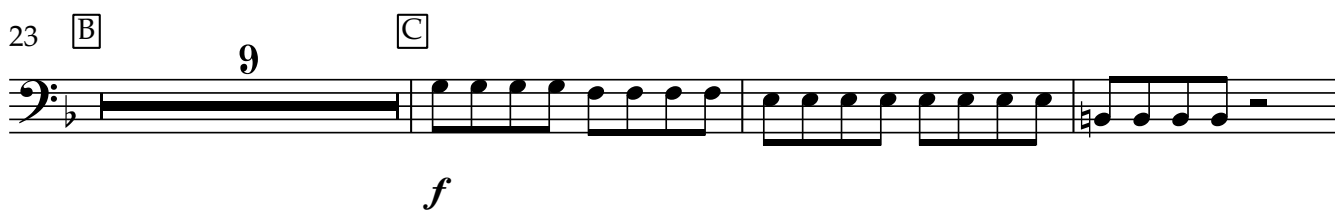
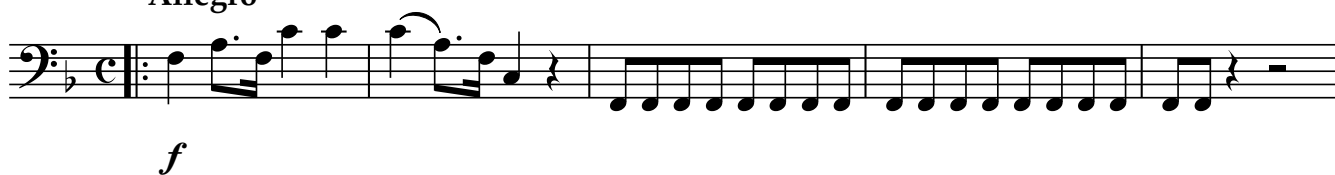
Sinfonia N°6 in F

arr. N P Thomas
chamber orchestra
rev.03

KV 43 (1767)

W. A. Mozart

Allegro



Bassoon 2

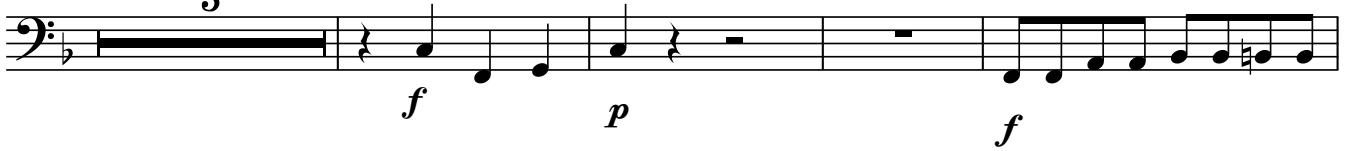
50 [D]



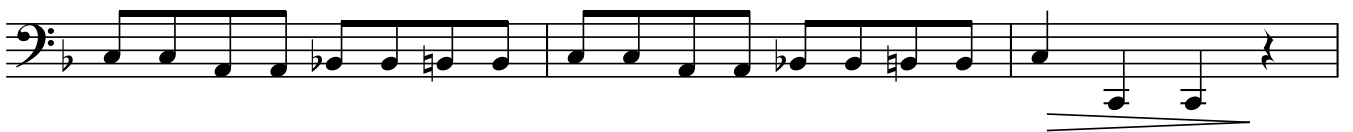
55 [E]



63 [3]



70



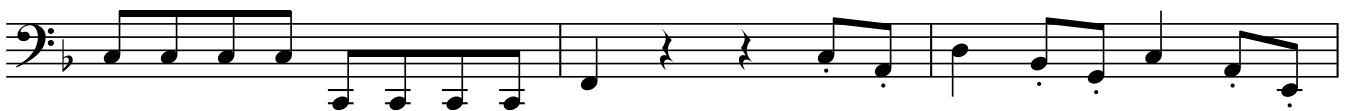
73 [F] [G]



90



96



99



Bassoon 2

Andante

ob1



Bassoon 2

Menuetto

fl1
3
mp

5

9 [A] 8 [B]
mp

22 [C] 7

16 [D] TRIO 5 [E] 11

[F] 8 [G]
mp

48

Bassoon 2

fg1 **Allegro**

2

8 A

4

17 B

4

p

25 C

4

f

32 D

7

f *p* *f*

43

p *f*

Bassoon 2

48 E

56 F

63 G

68

76 H

83

88 I

95 J

104

108

fp

fp

fp

fp

f

f

p

f

p

f

p

f

f