

# Trio op.4.1

Luigi Boccherini

Bearbeitung  
Anton Höger

Allegro con spirito

Git. 2

The musical score for guitar 2 is written in treble clef with a key signature of one flat (B-flat) and a common time signature (C). The tempo is marked 'Allegro con spirito'. The score consists of nine staves of music, each starting with a measure number and an octave indicator (8). The first staff (measures 1-6) begins with a forte (f) dynamic. The second staff (measures 7-13) includes a forte (f) dynamic followed by piano (p) dynamics. The third staff (measures 14-19) features a forte (f) dynamic and a triplet of eighth notes. The fourth staff (measures 20-23) continues with a forte (f) dynamic. The fifth staff (measures 24-28) includes a forte (f) dynamic and a trill. The sixth staff (measures 29-34) features a piano (p) dynamic and a trill. The seventh staff (measures 35-38) includes a forte (f) dynamic and a trill. The eighth staff (measures 39-43) features a forte (f) dynamic and a trill. The ninth staff (measures 44-47) includes a piano (pp) dynamic and a forte (f) dynamic.

2  
50

54

57

60

65

70

76

81

86

93

*f*

*f*

*f*

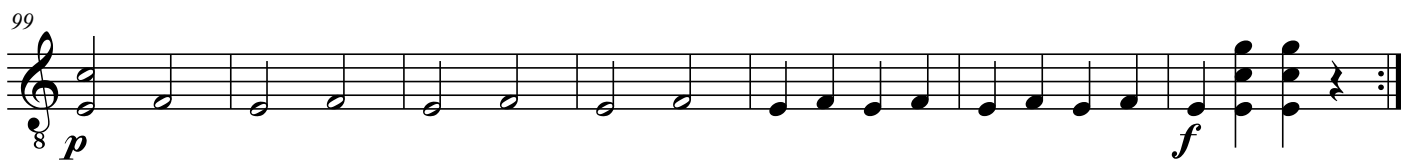
*p*

*p*

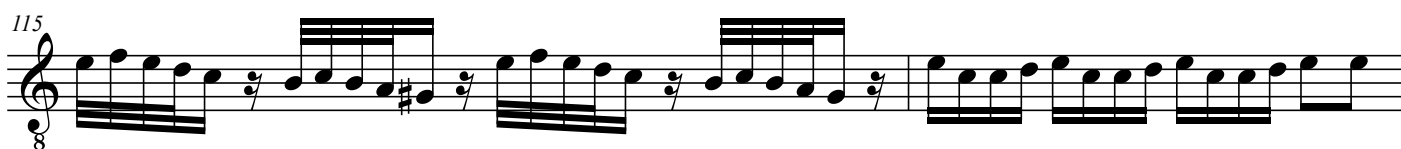
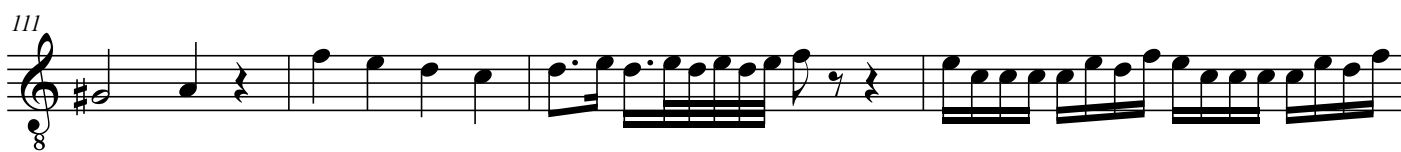
*p*

*f*

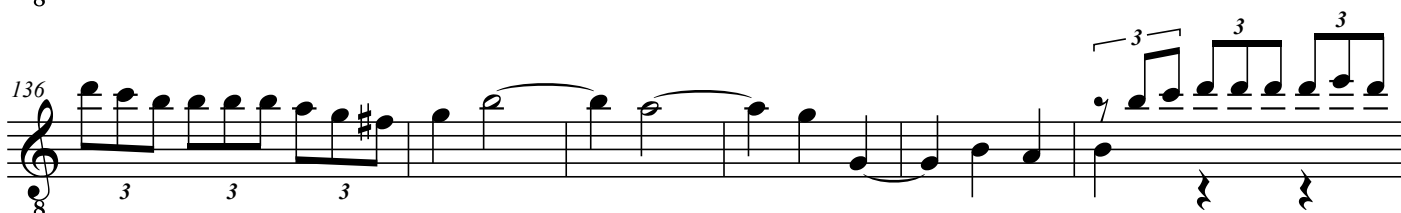
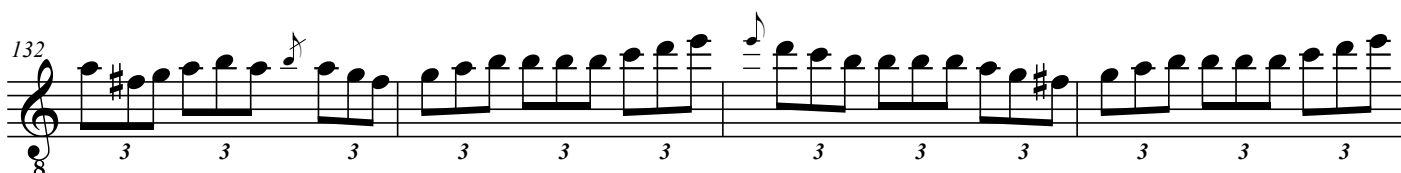
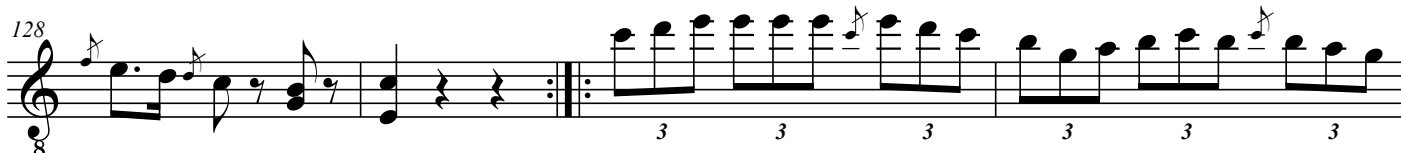
*f*



### Largo assai



### Tempo di Minuetto



142 *f* 3 3 3 3 3 3 3 3 *tr*

147 *f* *p*<sup>3</sup> *f* *p*<sup>3</sup>

153 *p*

159

166 *p* *f* *p*<sup>3</sup>

172 *f* *p*<sup>3</sup>

177 *f* *p*<sup>3</sup>

183 *f* *p*<sup>3</sup> *f* 3 3 3

Detailed description: This image shows a page of musical notation for guitar, measures 142 through 183. The music is written in treble clef with a key signature of one flat (B-flat). The time signature is 8/8. The notation includes various rhythmic patterns, including triplets and sixteenth notes. Dynamics such as *f* (forte), *p* (piano), and *tr* (trill) are indicated. Measure numbers 142, 147, 153, 159, 166, 172, 177, and 183 are placed at the beginning of their respective staves. The piece concludes with a double bar line and repeat dots at the end of measure 183.