

**W. A. Mozart**

*Sinfonia N°6*

KV 43

Contrabass

Contrabass

# Sinfonia N°6 in F

KV 43 (1767)

arr. N P Thomas  
chamber orchestra  
rev.03

W. A. Mozart

**Allegro**



*f*

5



*p*

*cresc.*

9



*f*

13

[A]



*f*

18



23

[B]

9

[C]



*f*

35



40



45



# Contrabass

50 [D]

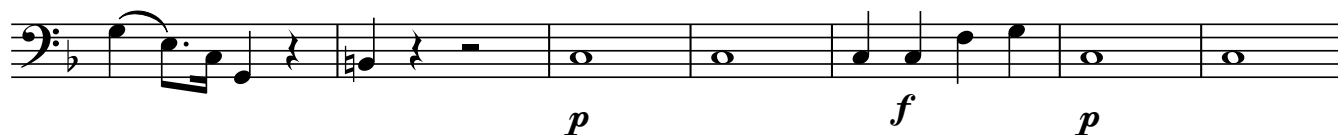


56

[E]



62



69



73

[F]

[G]

11



87



92

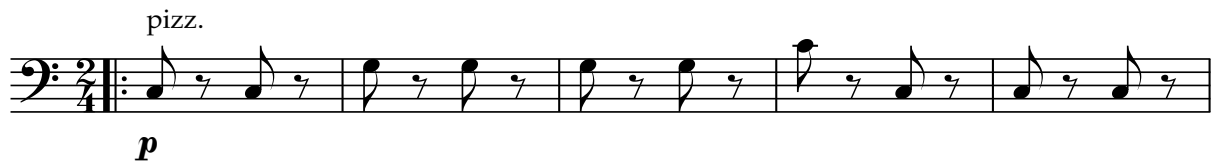


97



# Contrabass

## Andante



6



13 [A]



21 [B]



26



31 [C]



39 [D]



47 [E]



55

[F]



62



# Menuetto

Contrabass

fl1 arco

3 *mp*

6 [A] *f*

13 [B]

19

25 [C]

16 [D] TRIO *p*

[E] *f* 3 3 3 3

30 *p fp p*

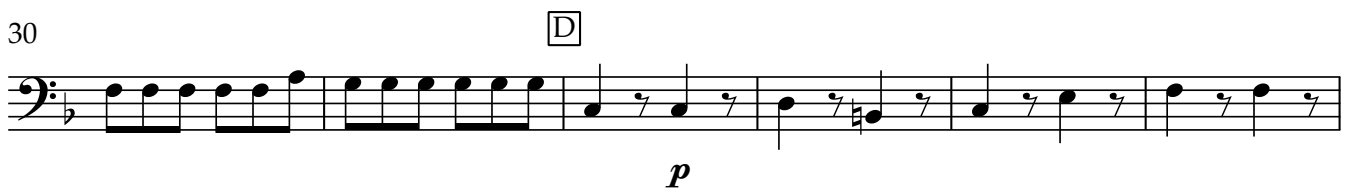
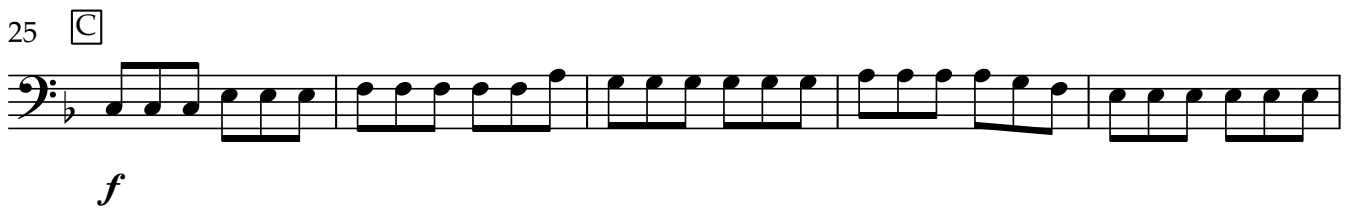
[F] ob1 *f* 3

43 [G]

48

Contrabass

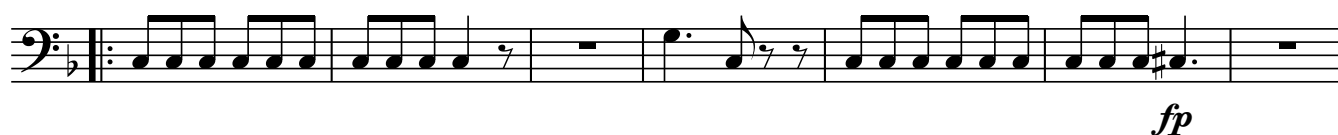
Allegro



# Contrabass

48

**E**



55

**F**



62

**G**



67



74

**H**



81



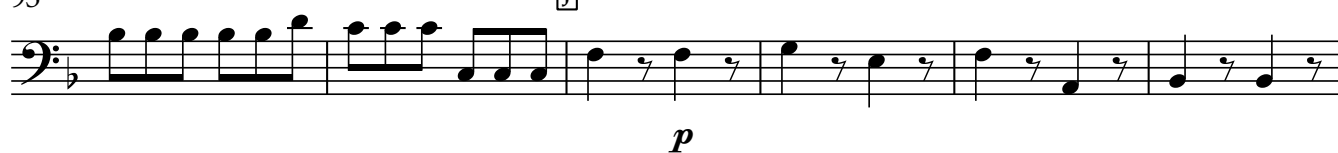
87

**I**

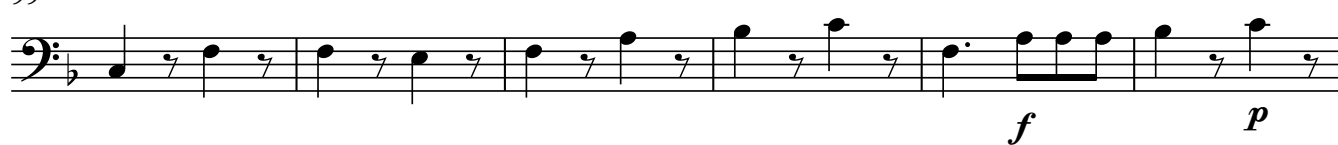


93

**J**



99



105

