

Trumpet in B $\flat$  1

# Concerto No. 1, Op. 5

Albinoni  
Bob Reifsnnyder

Allegro  $\text{♩} = 96$

*mf*

4

7 *tr* *mp*

11 *pp* *p*

14 *mp* *mf* *f* *ff*

16 *mp* *f* *p* *p*

19 *mp*

22 *mf* *f* *mf*

25 *mp* *p*

27 *mp* *mf* *f* *tr*

30 *mp*

32

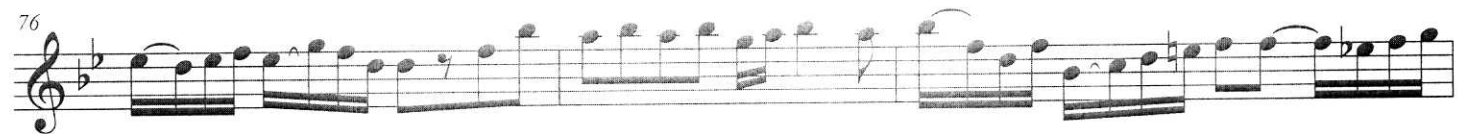
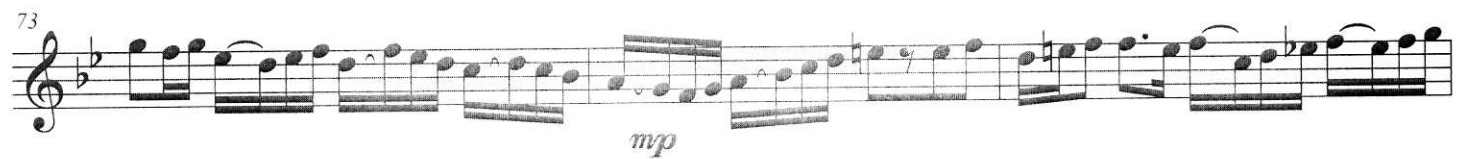
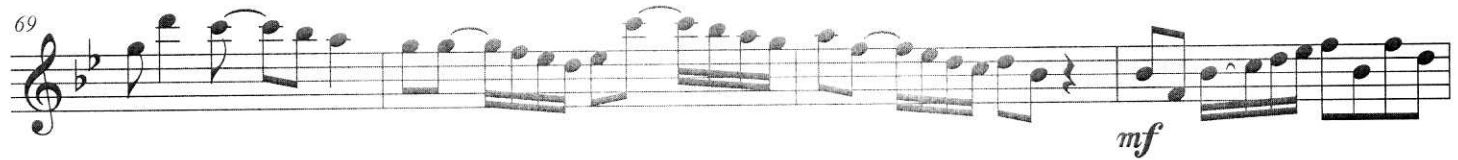
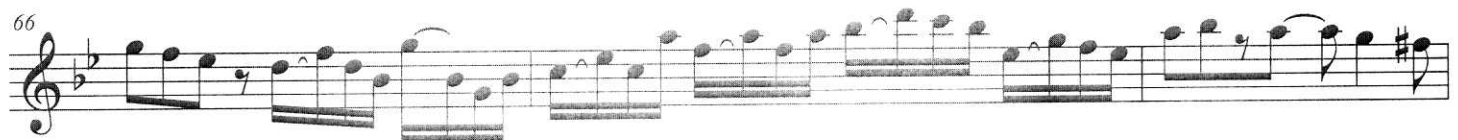
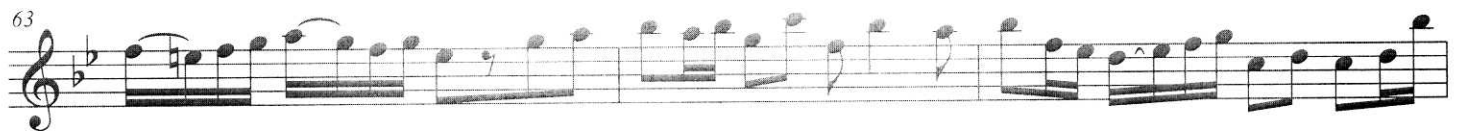
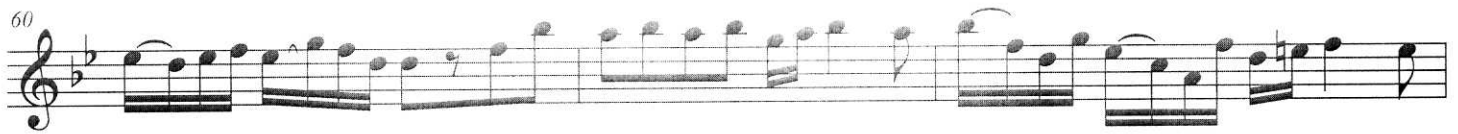
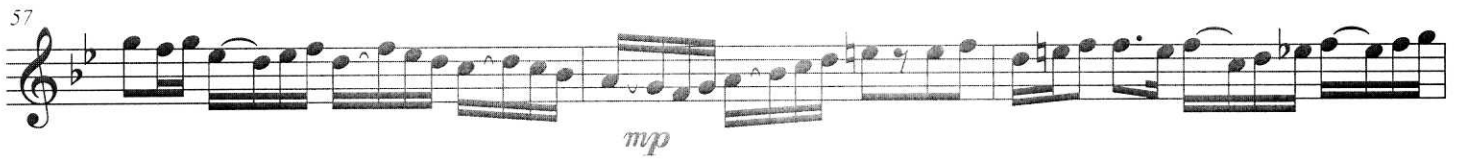
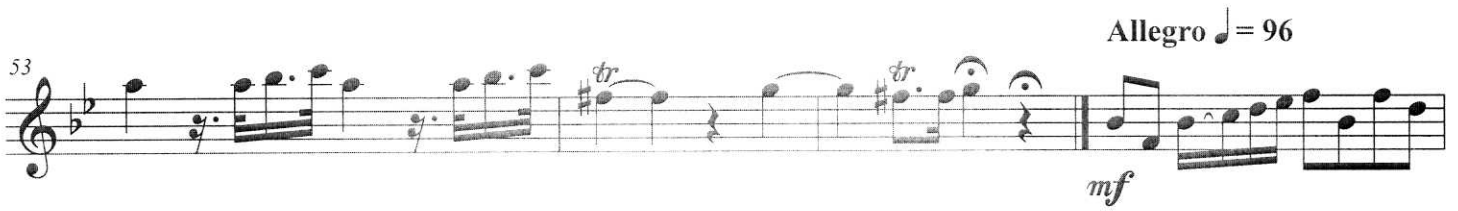
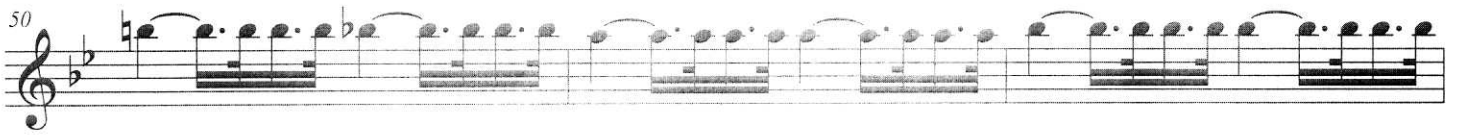
34

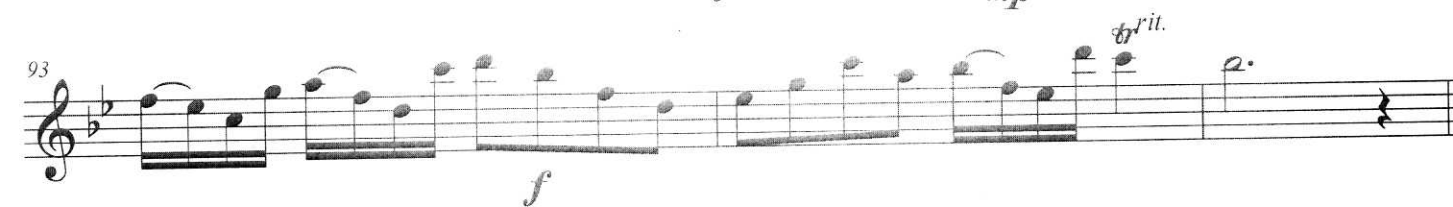
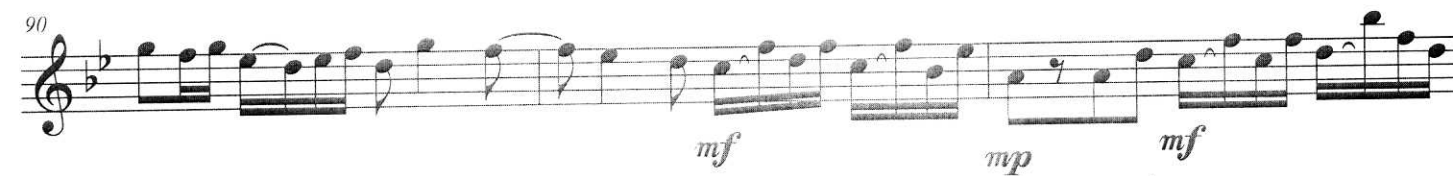
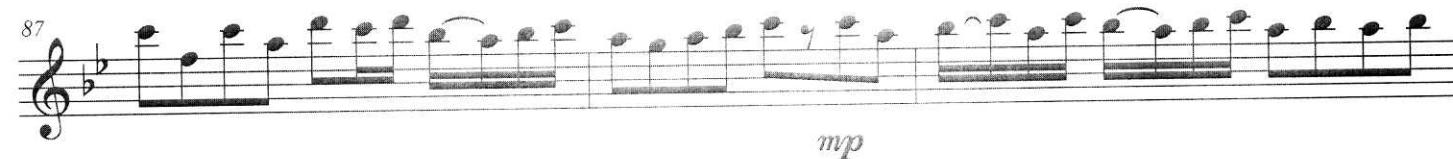
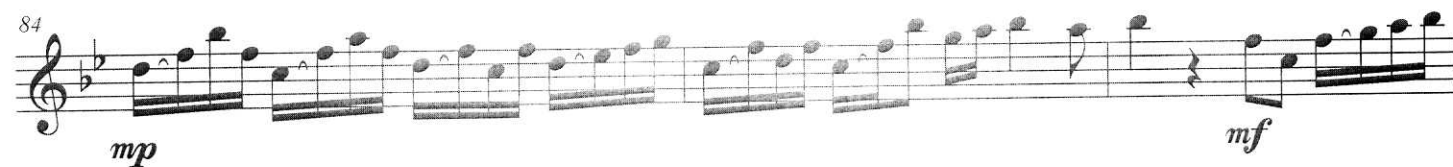
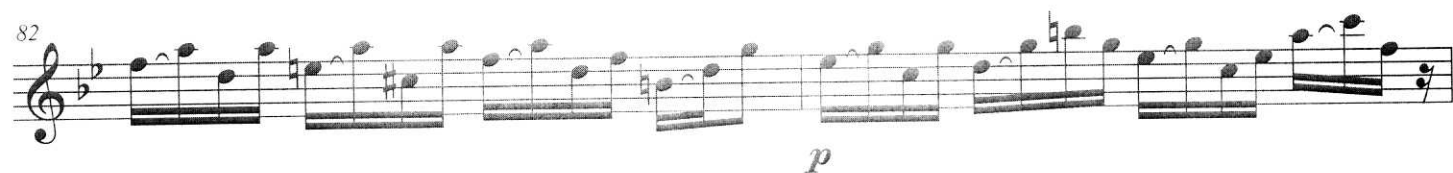
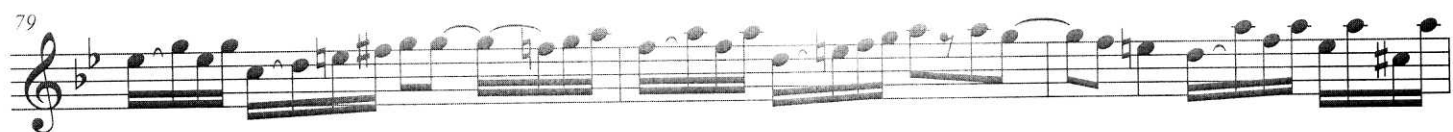
36 *mf* *mp*

39 *f* *p* *f*

42 *p* *f* *tr* *p* *f*

46 *rit.* *tr* *p* Adagio ♩=50





Trumpet in B $\flat$  2

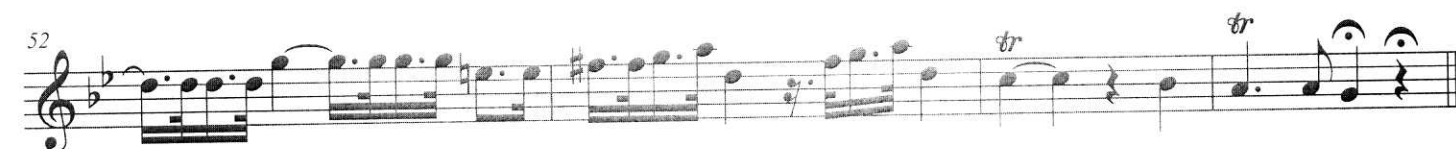
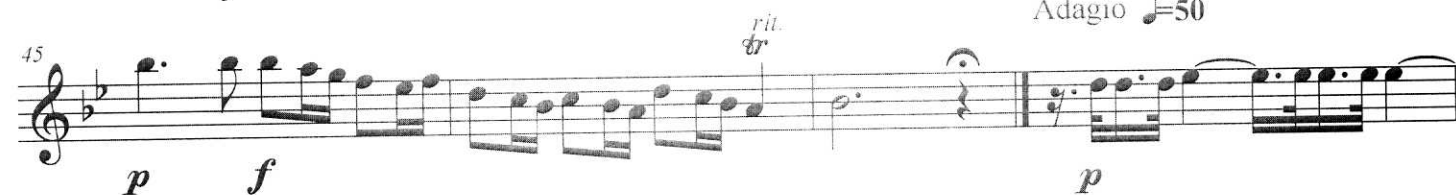
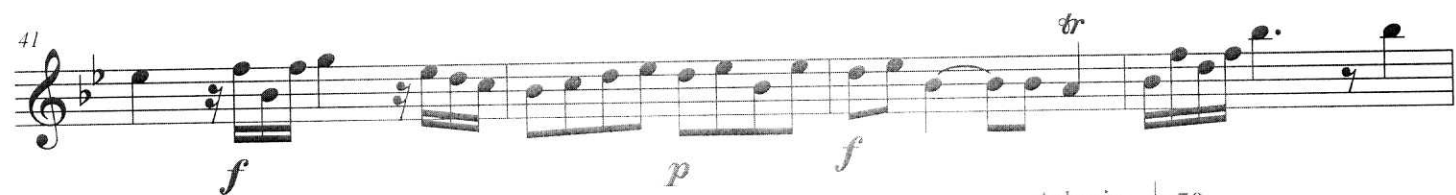
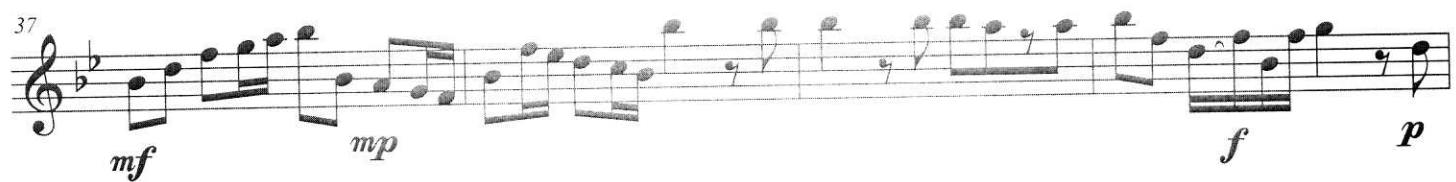
# Concerto No. 1, Op. 5

Albinoni

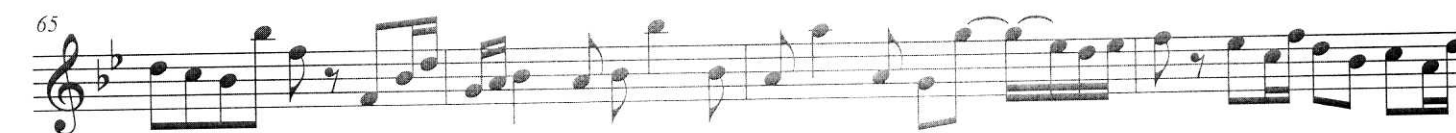
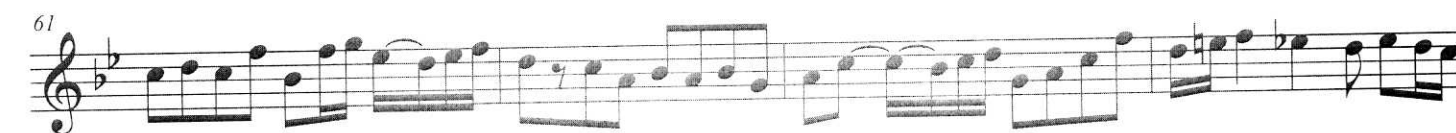
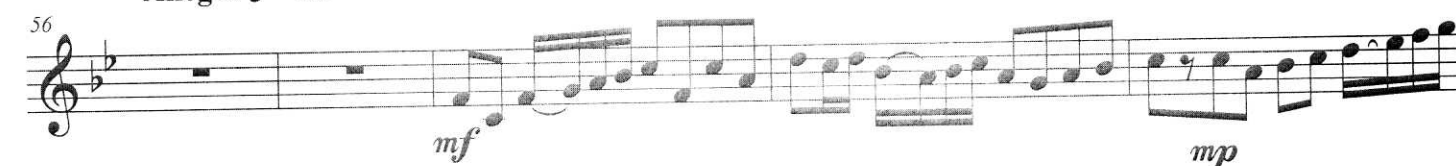
Bob Reifsnyder

**Allegro** ♩ = 96

Musical score for "The Rose Tree" in G major, 4/4 time. The score consists of 31 measures across six staves. It features a melody with various dynamics (*mf*, *mp*, *pp*, *p*, *ff*, *f*) and articulations (trills, slurs). The key signature has one sharp (F#) and the time signature is 4/4.



Allegro ♩=96



72 *mf*

76 *mp*

79

82 *p* *mp* *mf*

86 *mp*

89 *mf* *mp*

93 *f* *ff<sup>rit.</sup>*



Horn in F

# Concerto No. 1, Op. 5

Albinoni  
Bob Reifsnyder

Allegro ♩ = 96

*mf*

6 *mp*

11 *pp* *p* *mp* *mf* *f* *ff*

16 *mp* *f* *p* *mp*

21 *mf* *f* *mf* *mp*

27 *p* *mp* *mf* *f* *mp*

32 *mp*

37 *mf* *mp* *f* *p* *f*



42 *rit.*

*p f p f*

Adagio ♩ = 50

47 *p*

52 *Allegro ♩ = 96*

57 *mf*

64 *mp*

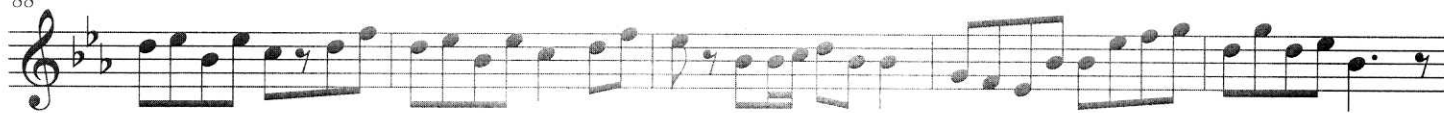
68

73

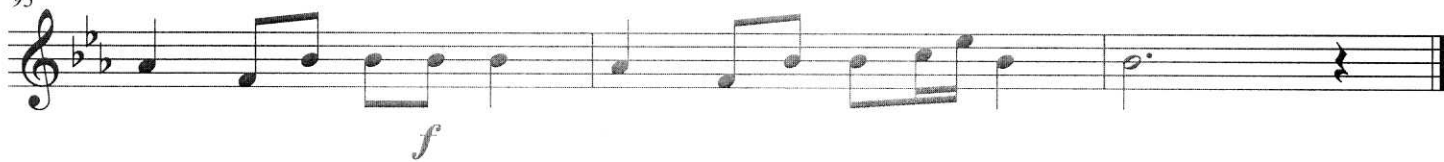
78

83 *p mp*

88



93



## Concerto No. 1, Op. 5

Albinoni

Bob Reifsnyder

Allegro ♩ = 96

*mf*

6 *mp*

11 *pp p mp mf f ff*

16 *mp f p mp*

21 *mf f mf mp*

27 *p mp mf f mp*

32 *mp*

37 *mf mp f p f*

42 *rit.*

*p* *f* *p* *f*

Adagio ♩ = 50

Detailed description: This musical staff contains measures 42 through 46. It begins with a bass clef and a key signature of two flats. The tempo is marked 'Adagio' with a quarter note equal to 50 beats. The dynamics are marked *p* (piano), *f* (forte), *p* (piano), and *f* (forte) at measures 42, 43, 45, and 46 respectively. The music features a series of eighth-note patterns with slurs and accents.

47

*p*

Detailed description: This musical staff contains measures 47 through 50. It begins with a bass clef and a key signature of two flats. The dynamics are marked *p* (piano) at measure 47. The music features a series of eighth-note patterns with slurs and accents.

51

Allegro ♩ = 96

Detailed description: This musical staff contains measures 51 through 54. It begins with a bass clef and a key signature of two flats. The tempo is marked 'Allegro' with a quarter note equal to 96 beats. The music features a series of eighth-note patterns with slurs and accents.

55

Detailed description: This musical staff contains measures 55 through 62. It begins with a bass clef and a key signature of two flats. The music features a series of eighth-note patterns with slurs and accents.

63

*mf* *mp*

Detailed description: This musical staff contains measures 63 through 68. It begins with a bass clef and a key signature of two flats. The dynamics are marked *mf* (mezzo-forte) at measure 63 and *mp* (mezzo-piano) at measure 66. The music features a series of eighth-note patterns with slurs and accents.

69

Detailed description: This musical staff contains measures 69 through 73. It begins with a bass clef and a key signature of two flats. The music features a series of eighth-note patterns with slurs and accents.

74

Detailed description: This musical staff contains measures 74 through 78. It begins with a bass clef and a key signature of two flats. The music features a series of eighth-note patterns with slurs and accents.

79

*p*

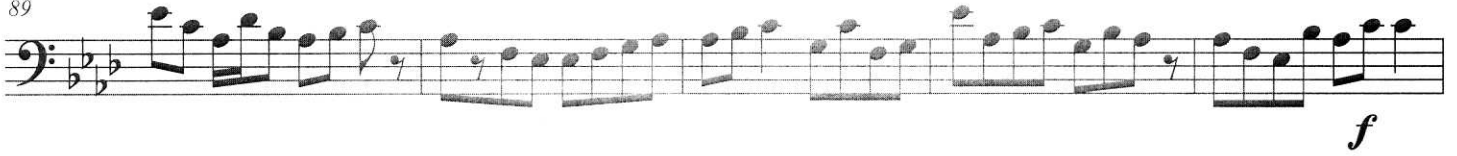
Detailed description: This musical staff contains measures 79 through 83. It begins with a bass clef and a key signature of two flats. The dynamics are marked *p* (piano) at measure 81. The music features a series of eighth-note patterns with slurs and accents.

84

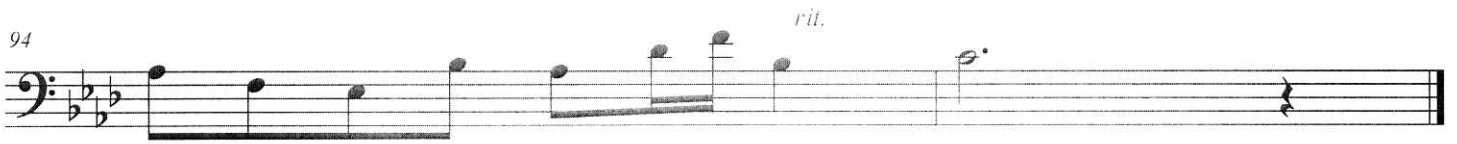
*mp*

Detailed description: This musical staff contains measures 84 through 87. It begins with a bass clef and a key signature of two flats. The dynamics are marked *mp* (mezzo-piano) at measure 84. The music features a series of eighth-note patterns with slurs and accents.

89



94



## Concerto No. 1, Op. 5

Albinoni

Bob Reifsnyder

Allegro ♩ = 96

6

11

16

20

25

30

35

*mf*

*mp*

*pp*

*p*

*mp*

*mf*

*f*

*ff*

*mp*

*f*

*p*

*mf*

*f*

*mp*

*mf*

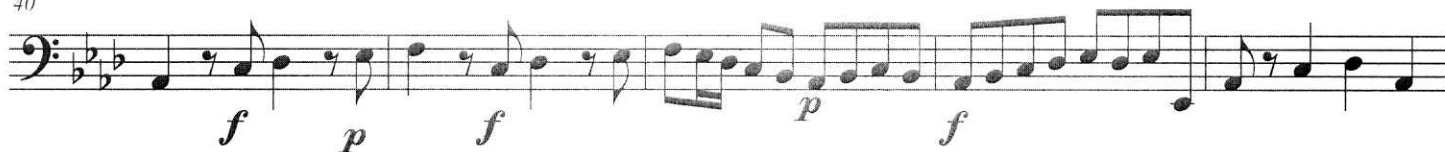
*f*

*mp*

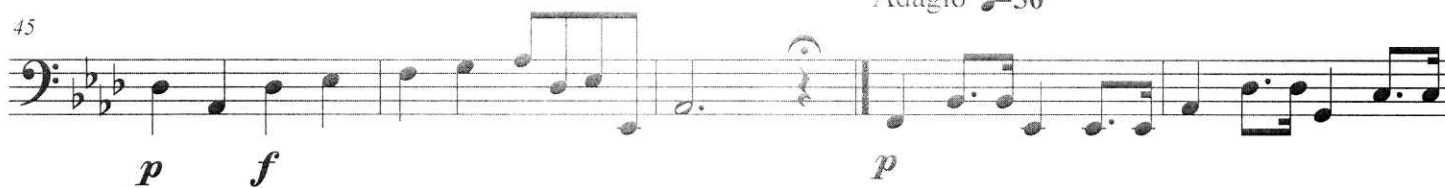
*mf*

*mp*

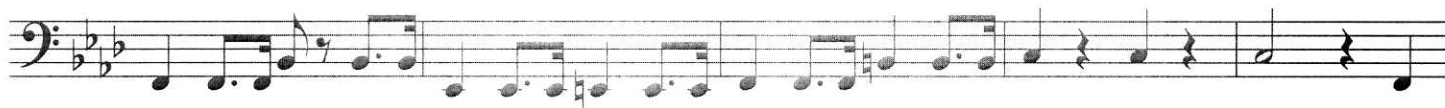
40



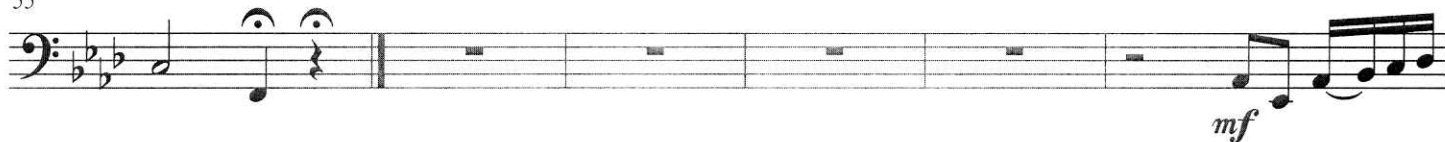
45



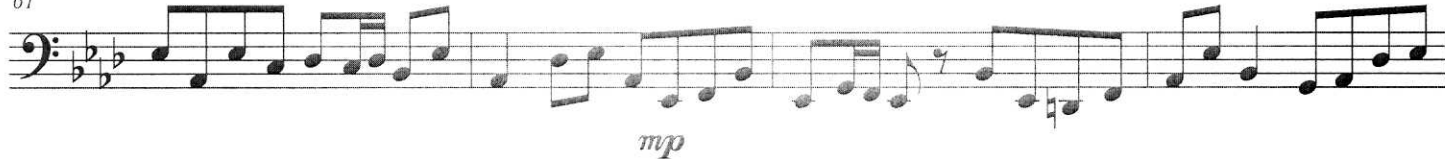
50

*Allegro* ♩ = 96

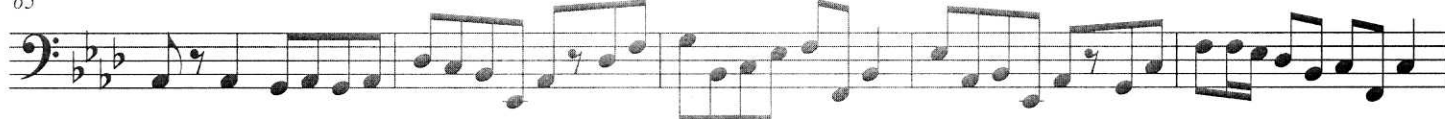
55



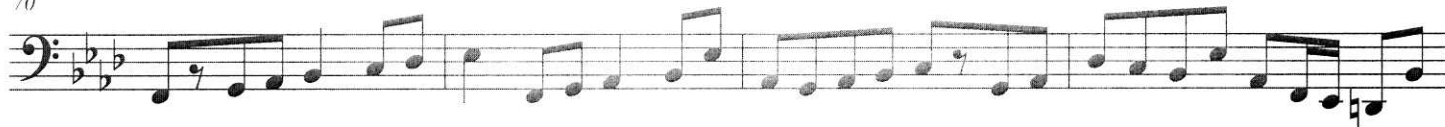
61



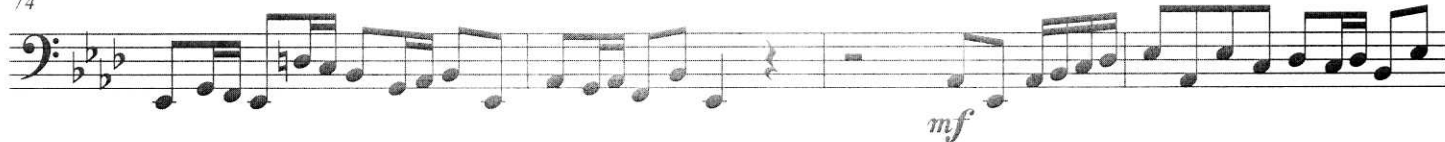
65



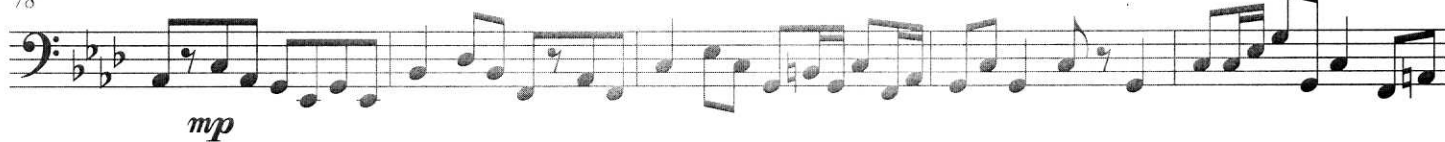
70



74

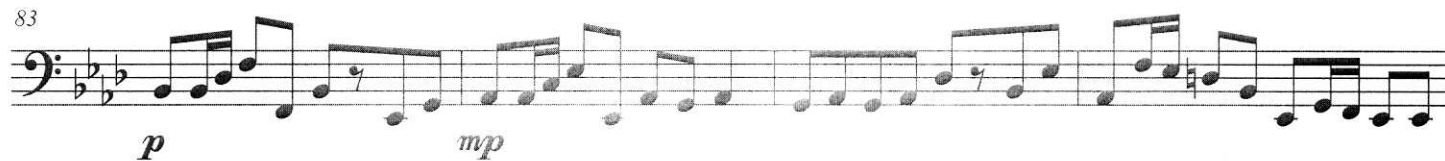


78





83



87



92

