

Viola

Sonata Opus 5 nr 4

A. Corelli
Arr. G.H.Kruithof

Adagio

Measures 1-15 of the Adagio section. The music is in 4/4 time, key of B-flat major (two flats). The notation features a variety of note values including eighth, quarter, and half notes, with frequent use of slurs and ties. Measure numbers 6, 11, and 15 are indicated at the start of their respective staves.

Allegro

Measures 16-23 of the Allegro section. The tempo and key signature remain the same. The notation is more rhythmic, featuring many eighth and sixteenth notes, often beamed together. Measure numbers 5, 10, 16, 21, and 23 are indicated at the start of their respective staves.

25



27



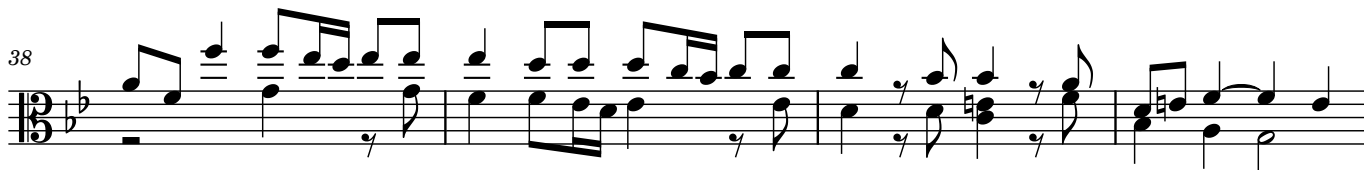
30



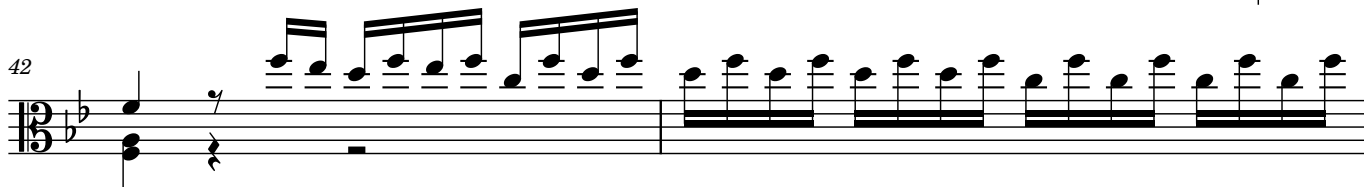
33



38



42



44



46



50

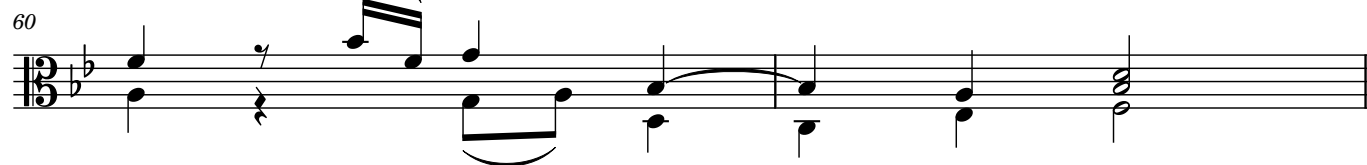


55



Adagio

3



Vivace

4

7

14

20

24

28

34

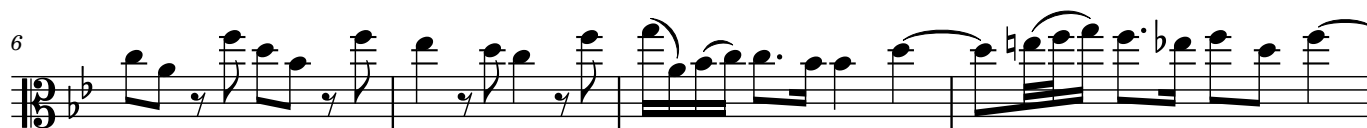
40

47

54

Adagio

5



6

Allegro