

# Sonata G.6

pour Violoncelle et Basse

Violoncelle

Luigi BOCCHERINI  
(1743-1805)

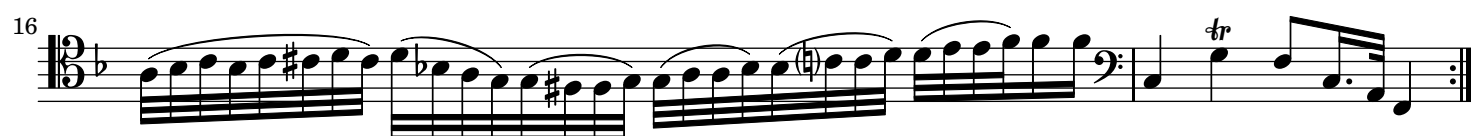
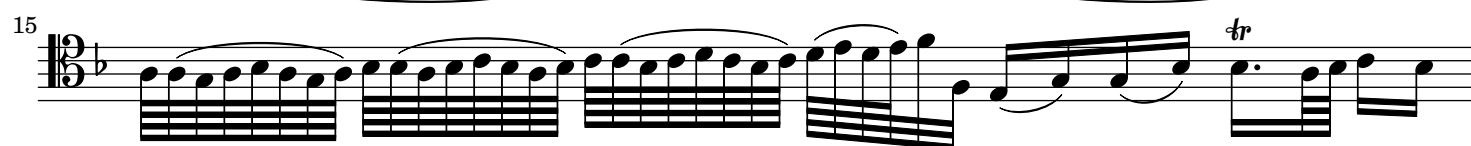
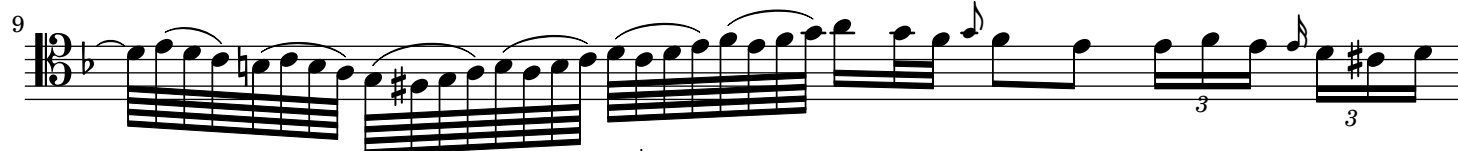
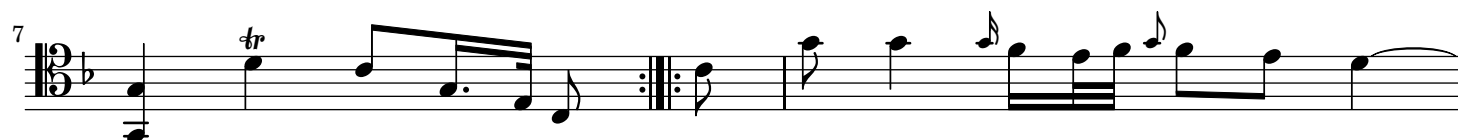
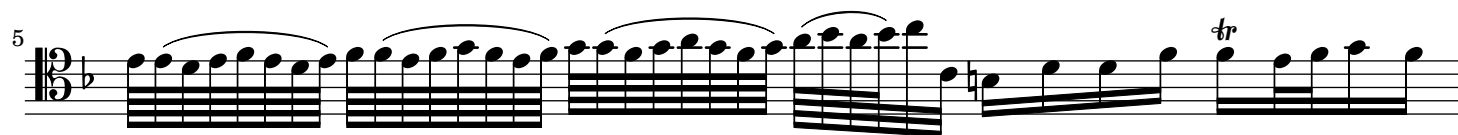
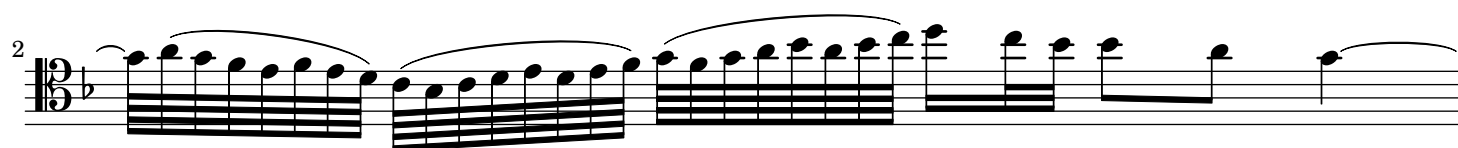
**Allegro**

The image displays a musical score for the Violoncelle part of Sonata G.6 by Luigi Boccherini. The score is written in 12/8 time and begins with a treble clef. It consists of 17 numbered measures. The notation includes various musical symbols such as eighth notes, sixteenth notes, and triplets, along with dynamic markings like 'tr' (trill) and 'f' (forte). The score is presented on a single staff with a key signature of one sharp (F#).



Violoncelle score for Sonata G.6, measures 19-40. The score is written for a single staff in 12/8 time. The key signature is one flat (B-flat). The score includes various musical notations such as eighth notes, sixteenth notes, and triplets, as well as trills and slurs. The measures are numbered 19, 21, 24, 26, 28, 30, 32, 34, 36, 38, and 40. The score ends with a double bar line and repeat dots at measure 40.







[illegible]



66 *tr* *tr*

73 *tr* *tr* *tr* *tr*

79 (b)

85

97

104

109

115

120 *tr*

125 *tr* *p*

131 *p*

Detailed description: This page contains the musical score for the Violoncelle part, measures 66 through 131. The score is written in 12/8 time. Measures 66-72 are in the bass clef with a key signature of one sharp (F#). Measures 73-84 are in the bass clef with a key signature of one flat (Bb). Measures 85-96 are in the bass clef with a key signature of two flats (Bb, Eb). Measures 97-103 are in the bass clef with a key signature of two flats. Measures 104-108 are in the bass clef with a key signature of two flats. Measures 109-114 are in the bass clef with a key signature of two flats. Measures 115-119 are in the treble clef with a key signature of two flats. Measures 120-124 are in the treble clef with a key signature of two flats. Measures 125-130 are in the treble clef with a key signature of two flats, ending with a key signature change to one flat (Bb) in measure 130. Measures 131-136 are in the bass clef with a key signature of one flat. The score includes various musical notations such as eighth notes, sixteenth notes, triplets, and trills. Dynamics include *p* (piano) and *tr* (trill).