

Viola

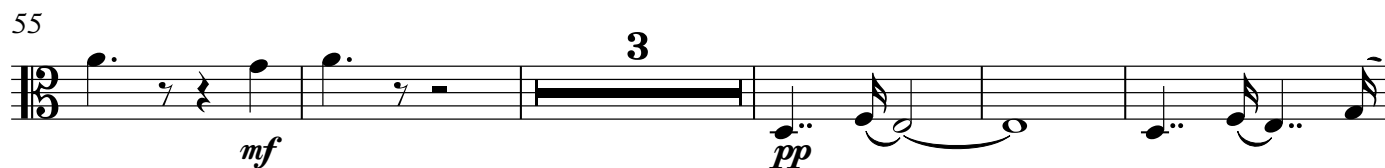
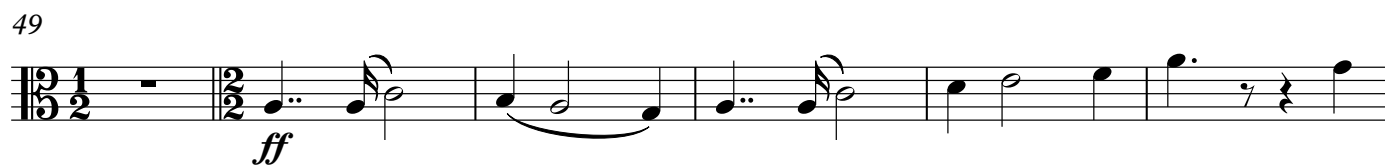
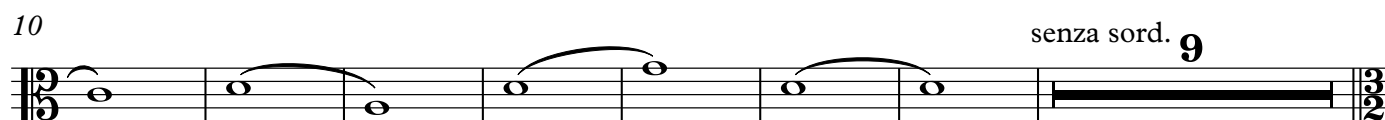
Contes d'Espagne, Op. 20

1. Devant la tour du Clavero (Salamanca)

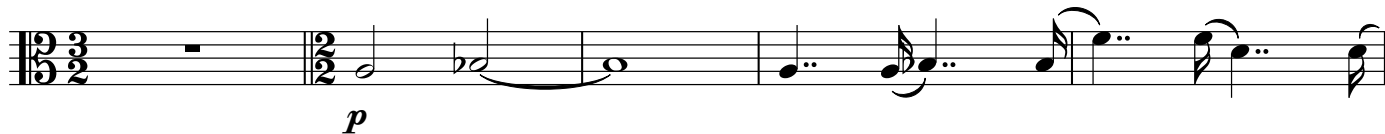
Turina/Johnson

Moderato [$\text{♩}=76$]

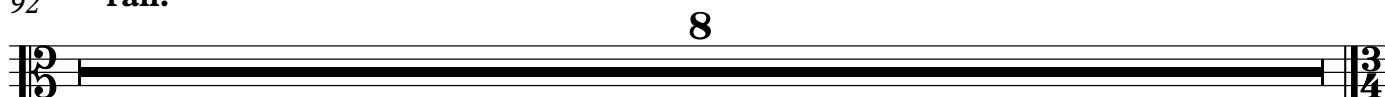
con sord.



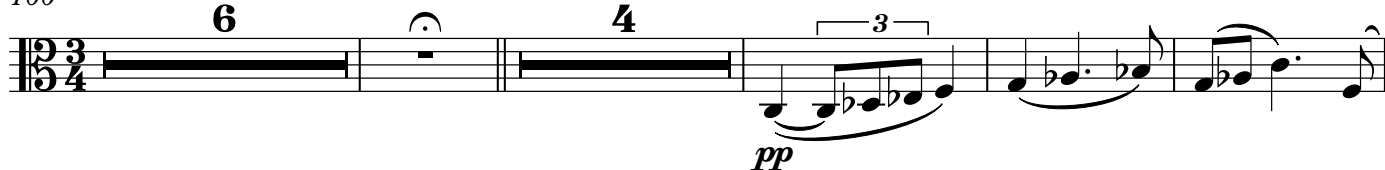
81



86

92 **rall.**

2. Une vieille eglise a Logrono

100 **Andante**

114



119



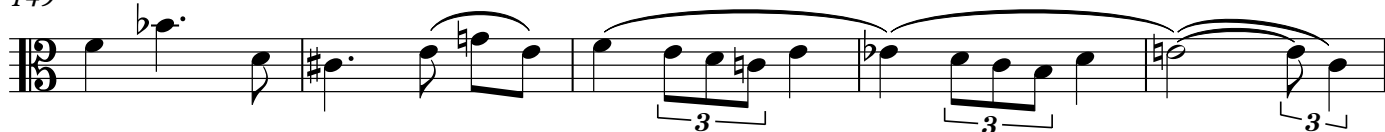
127



134



149



Viola

3

154 **rit.** **a tempo**
senza sord.

4

mf *f* *cresc.*

163 *ff*

167 *cresc.* *fff*

171 *mf* *pp* **con sord.**

3. Miramar (Valencia)

178 **Allegro vivo**

f *p*

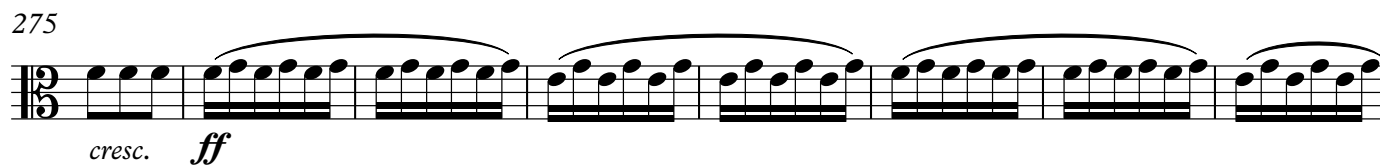
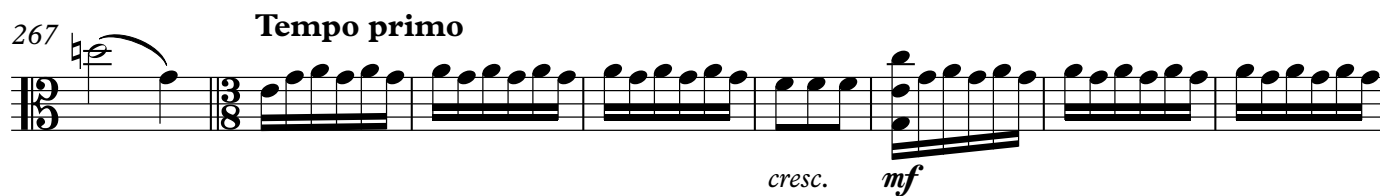
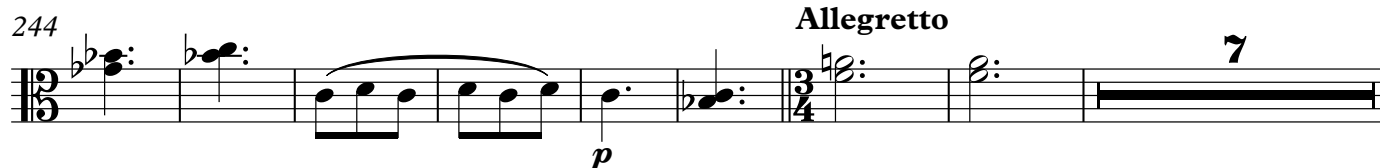
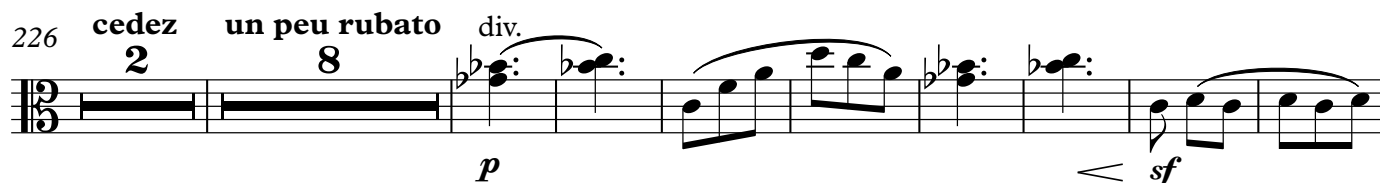
186 *f*

194 *mp* *mf* *f*

204

210 *dim.* *p* 4

220



319 *dim.* *pp*

326 *pp* *ff* *pizz.* *arco* *con sord.*

4. Dans les jardins de Murcia

336 **Allegretto mosso** [♩.=48]

346 **9**

360 **[molto rit.]** *pp* *senza* **Piu mosso** **5** *solo* *mf*

372 *tutti* *f* *f* *mf* *solo*

382 **rit.** *sforz.* *tutti* **Piu lento** **10** **2** *con sord.*

399 **Tempo primo**

p

412 *cresc.* *dim.* *p* **2** **2** *rit.*

426 **a tempo** **Andante**

11 2

ppp *pp*

5. Le Chemin de la Alhambra

445 **pizz. Allegro martial**

mf

453 **arco**

f

461 *p* *cresc.* *f*

470 *f* *sfz* *mf*

482 *f*

499 *mf* **pizz.**

510

519 **arco** *f* *dim.* *p* *dim.*

Viola

7

535

G.P.



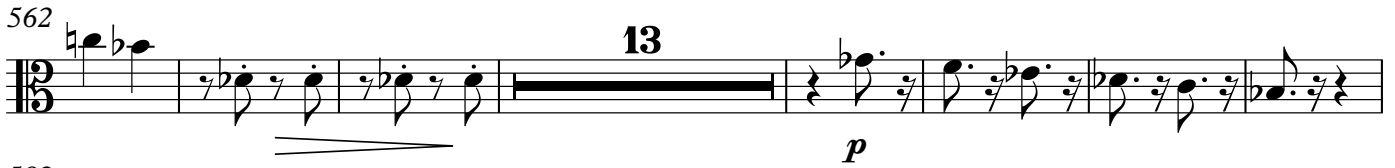
545



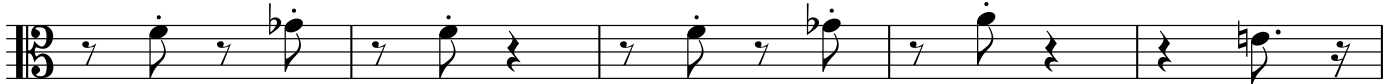
553



562



582

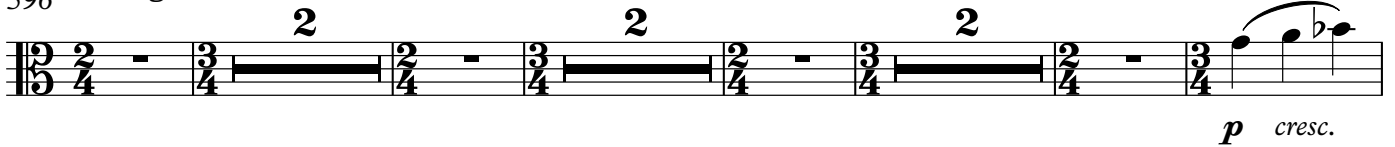


587

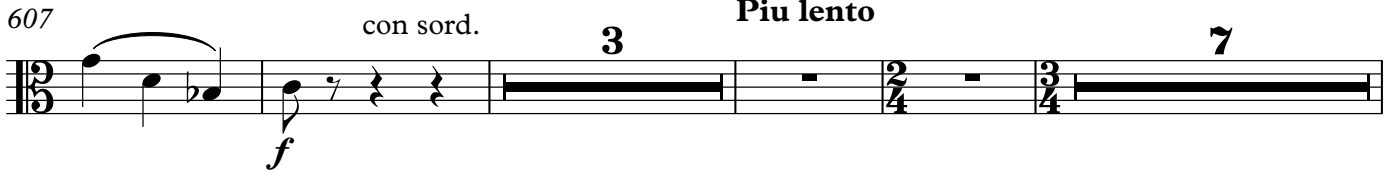


6. La Caleta (Malaga)

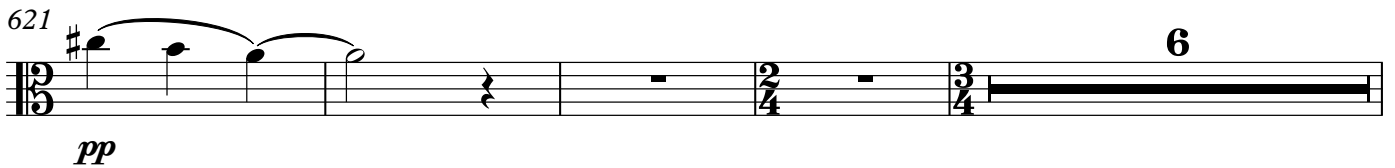
596 Allegretto mosso



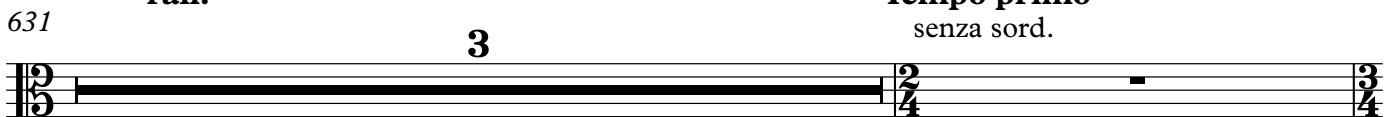
607



621



631



635 *con sord.* *senza sord.*

p cresc. *f* *pp*

641 **Piu Lento**

ff

648 **rall.** **Molto Adagio** **Tempo primo**

dim. molto *p cresc.* *mf cresc.*

657

f *cresc.* *ff*

661

fff

7. Rompeolas (Jeux des vagues)

666 **Allegro vivo**

p

677

p *mp*

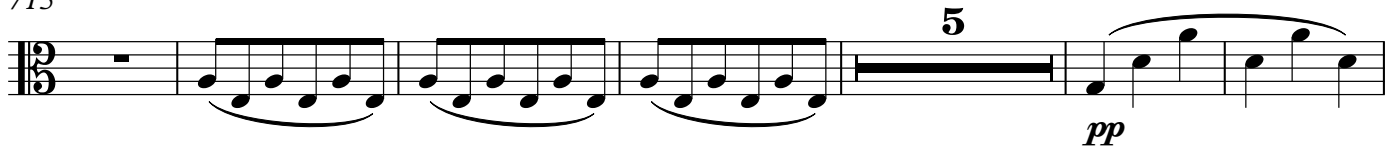
703

f

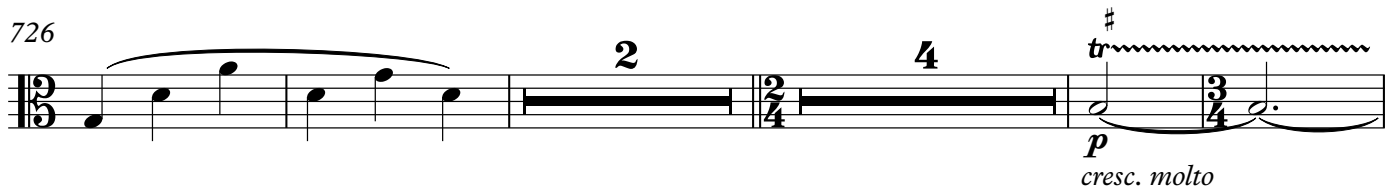
709

f

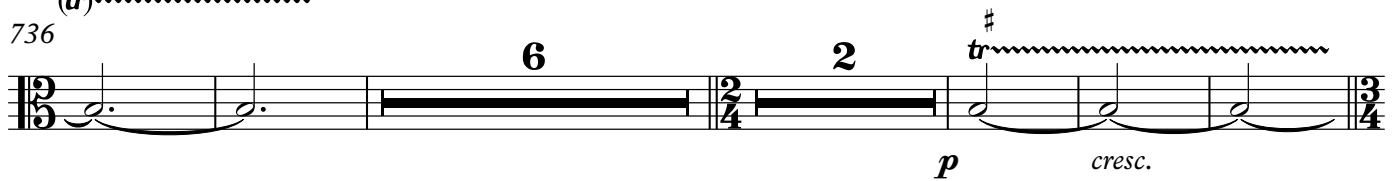
715



726



736



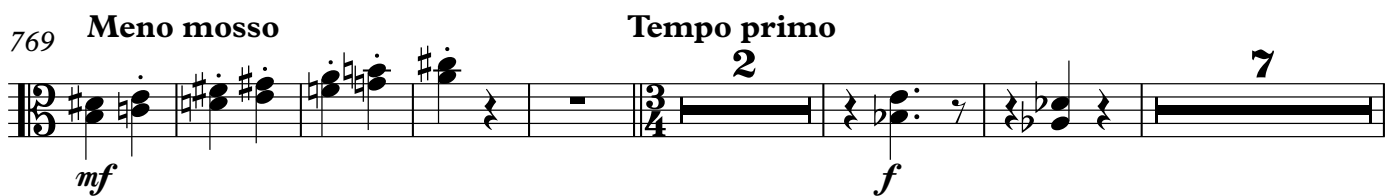
749



759



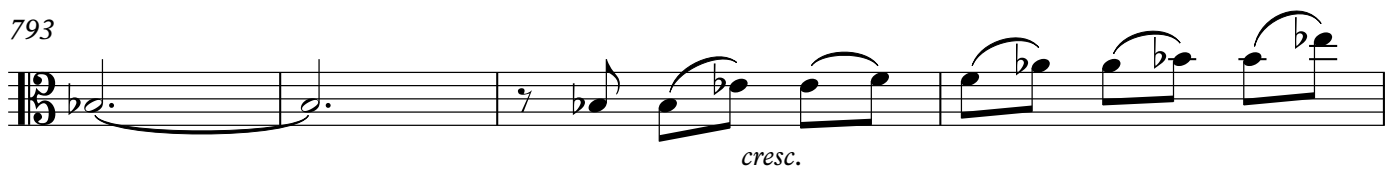
769



785



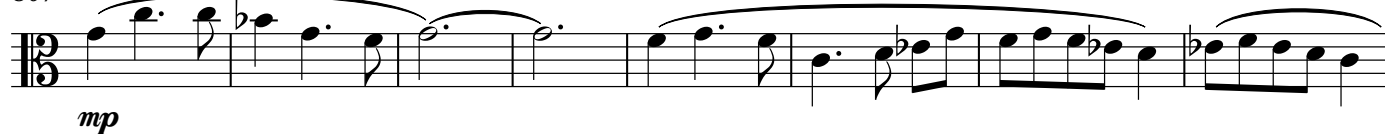
793



797



807



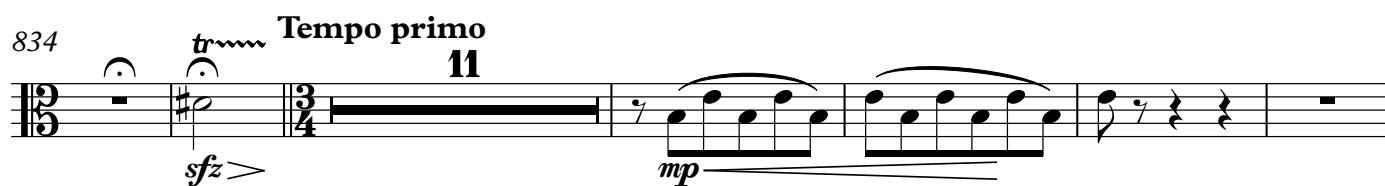
815



824



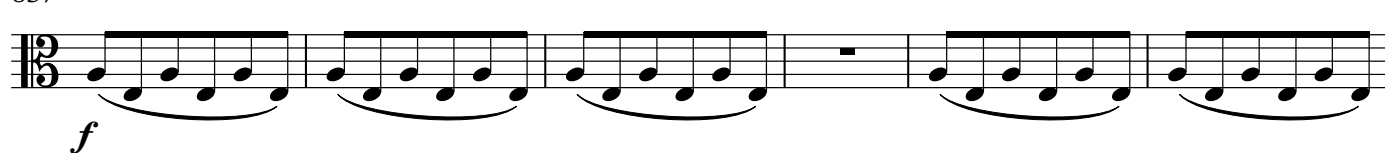
834



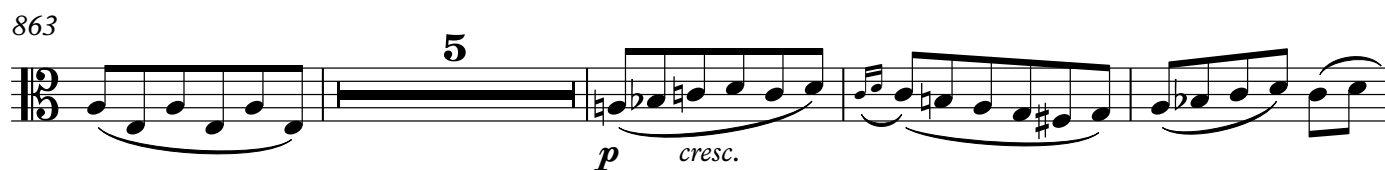
851



857



863



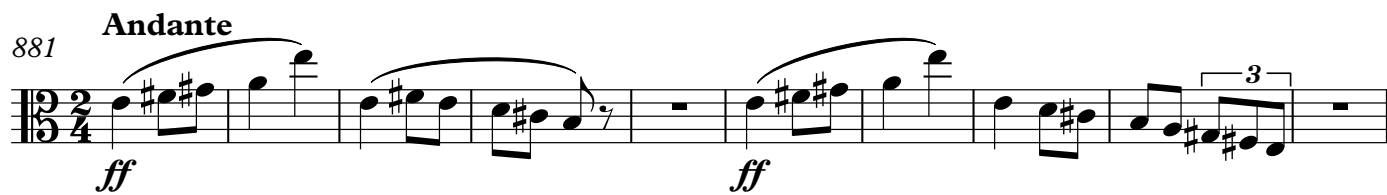
872



878 [rall.]



881 **Andante**



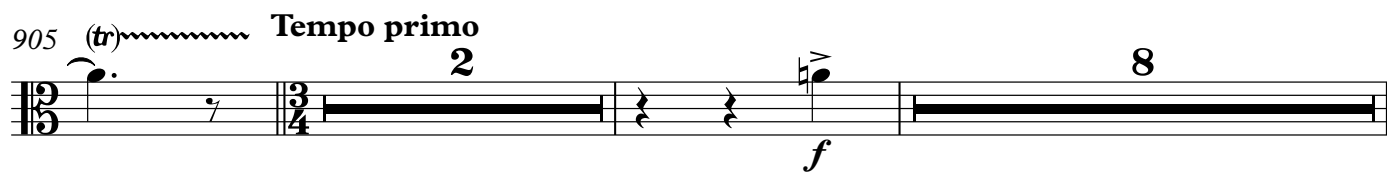
ff *ff*

891



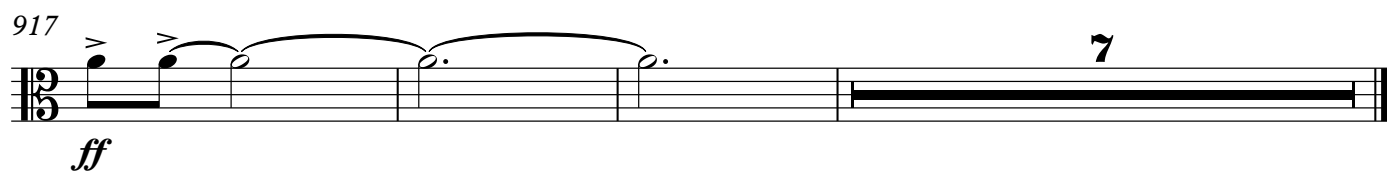
ff *p*

905 (tr) **Tempo primo**



f

917



ff