



Aria variata

1

BWV 989

Johann Sebastian BACH (1685 - 1750)

Thème (version Livre d'Andreas Bach)

4

7

10

13

13

16

16

19

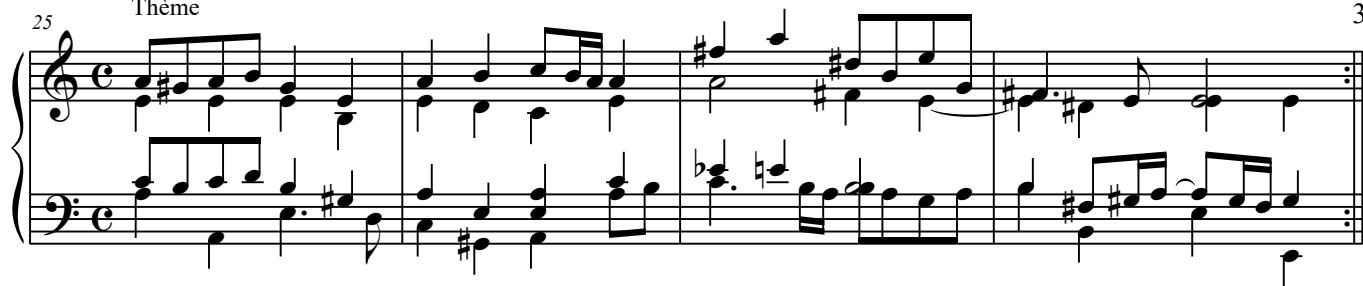
19

22

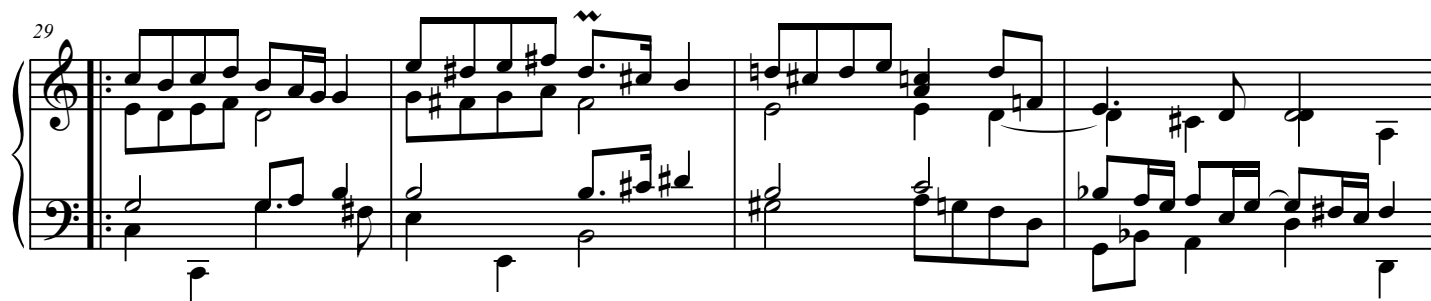
22

Thème

25



29



33



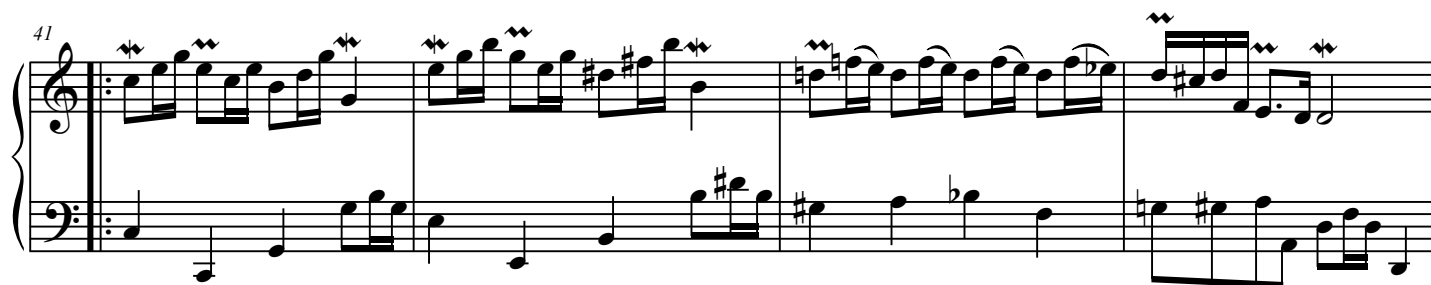
Var. 1

Largo

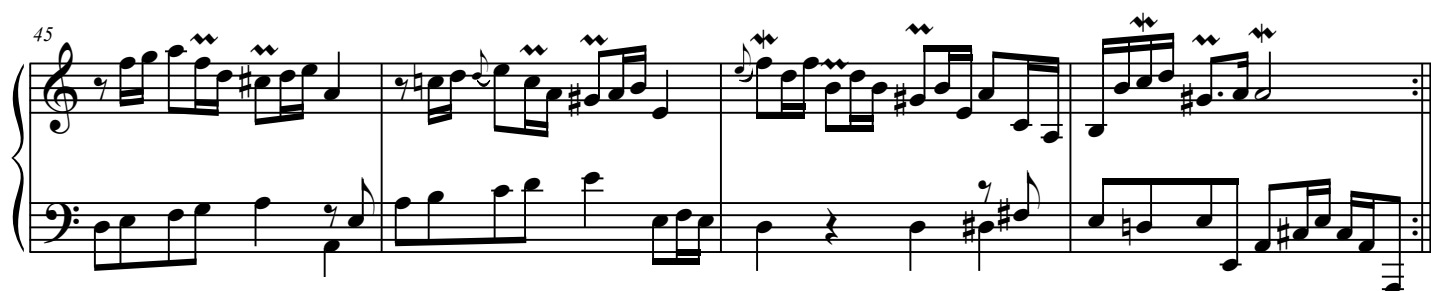
37



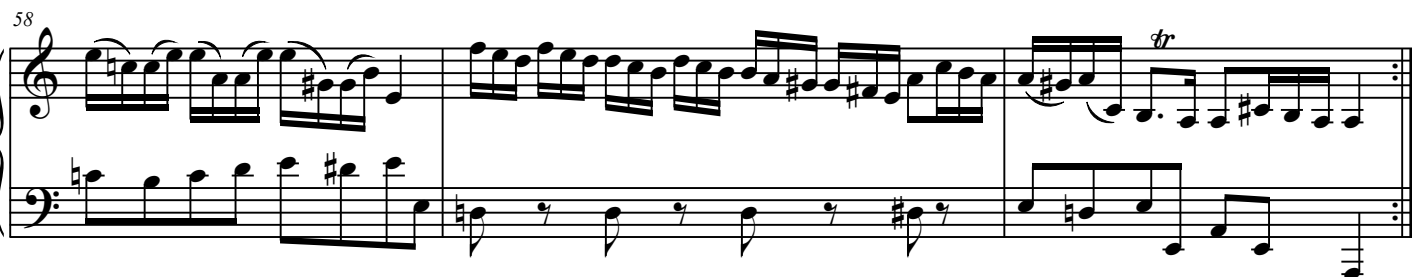
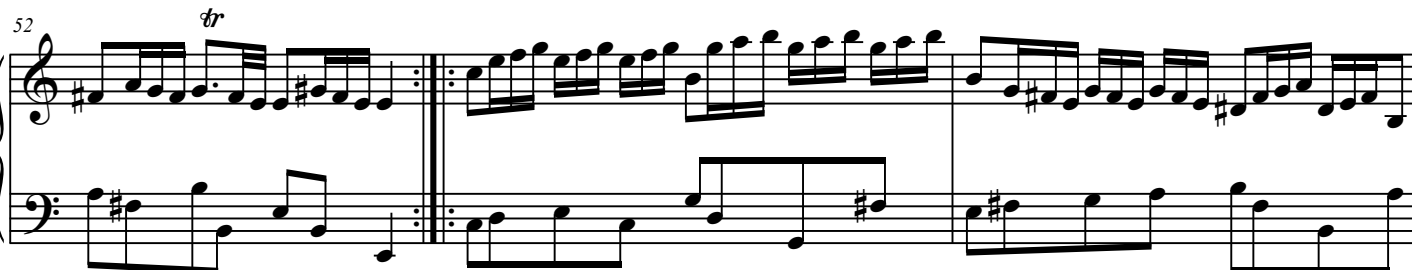
41



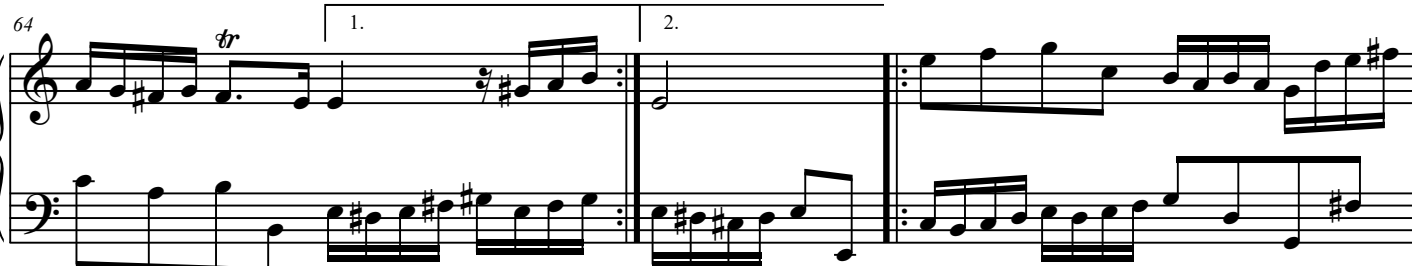
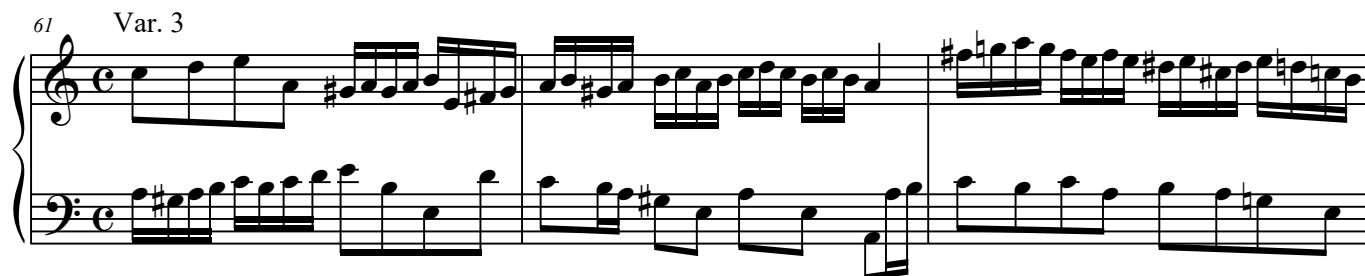
45



49 Var. 2



61 Var. 3



66

Measures 66-67 of a piano piece. Measure 66 features a treble staff with a sequence of eighth notes and a sharp sign, and a bass staff with a similar eighth-note pattern. Measure 67 continues with a treble staff of sixteenth-note runs and a bass staff with a few notes and a flat sign.

68

Measures 68-70. Measure 68 has a treble staff with trills and a bass staff with eighth notes. Measure 69 continues the patterns. Measure 70 includes a trill in the treble staff and a bass staff with eighth notes.

71

Measures 71-72. Measure 71 shows a treble staff with a trill and a first ending bracket, and a bass staff with eighth notes. Measure 72 shows a second ending in the treble staff and a bass staff with eighth notes.

Var. 4
Allegro

73

Measures 73-75 of the 'Var. 4 Allegro' section. Measure 73 has a treble staff with a trill and a bass staff with eighth notes. Measure 74 continues with similar patterns. Measure 75 features a treble staff with a trill and a bass staff with eighth notes.

76

Measures 76-78. Measure 76 has a treble staff with a trill and a bass staff with eighth notes. Measure 77 includes a repeat sign in the treble staff. Measure 78 features a treble staff with a trill and a bass staff with eighth notes.

79

Measures 79-80. Measure 79 has a treble staff with eighth notes and a bass staff with eighth notes. Measure 80 continues with eighth notes in both staves.

6
81

Two staves of music. The right staff (treble clef) contains a melody with eighth and sixteenth notes, including some triplets. The left staff (bass clef) provides a harmonic accompaniment with eighth and sixteenth notes.

83

Two staves of music. The right staff (treble clef) features a more complex melody with many beamed sixteenth and thirty-second notes. The left staff (bass clef) continues the accompaniment with steady eighth notes.

85
Var. 5
Un poco allegro

Two staves of music. The right staff (treble clef) has a melody with eighth notes and some triplets. The left staff (bass clef) has a simple accompaniment of eighth notes.

87

Two staves of music. The right staff (treble clef) has a fast, repetitive melody of sixteenth notes. The left staff (bass clef) has a steady eighth-note accompaniment. A first and second ending bracket is shown at the end of the system.

89

Two staves of music. The right staff (treble clef) has a fast, repetitive melody of sixteenth notes. The left staff (bass clef) has a steady eighth-note accompaniment.

92

Two staves of music. The right staff (treble clef) has a fast, repetitive melody of sixteenth notes. The left staff (bass clef) has a steady eighth-note accompaniment.

95

Measures 95-96 of a musical score. The treble clef staff contains a series of eighth and sixteenth notes, mostly ascending, with some accidentals (sharps and naturals). The bass clef staff contains a series of eighth notes, mostly ascending, with some accidentals. The key signature has one sharp (F#).

Var. 6
97 Andante

Measures 97-98 of a musical score, marked "Var. 6" and "Andante". The treble clef staff contains a series of eighth notes, mostly ascending, with some accidentals (sharps and naturals). The bass clef staff contains a series of eighth notes, mostly ascending, with some accidentals. The key signature has one sharp (F#).

99

Measures 99-101 of a musical score. The treble clef staff contains a series of eighth notes, mostly ascending, with some accidentals (sharps and naturals). The bass clef staff contains a series of eighth notes, mostly ascending, with some accidentals. The key signature has one sharp (F#).

102

Measures 102-103 of a musical score. The treble clef staff contains a series of eighth notes, mostly ascending, with some accidentals (sharps and naturals). The bass clef staff contains a series of eighth notes, mostly ascending, with some accidentals. The key signature has one sharp (F#).

104

Measures 104-105 of a musical score. The treble clef staff contains a series of eighth notes, mostly ascending, with some accidentals (sharps and naturals). The bass clef staff contains a series of eighth notes, mostly ascending, with some accidentals. The key signature has one sharp (F#).

106

Measures 106-108 of a musical score. The treble clef staff contains a series of eighth notes, mostly ascending, with some accidentals (sharps and naturals). The bass clef staff contains a series of eighth notes, mostly ascending, with some accidentals. The key signature has one sharp (F#).

Var. 7

Un poco allegro

109

112

115

118

Var. 8

Allegro

121

124

1.

2.

126

Measures 126-128: Treble and bass staves. Measure 126 features a treble staff with eighth-note runs and a bass staff with a similar pattern. Measure 127 continues the eighth-note runs in both staves. Measure 128 shows a change in the treble staff with a dotted quarter note and eighth-note pattern, while the bass staff continues with eighth notes.

129

Measures 129-130: Treble and bass staves. Measure 129 has a treble staff with eighth-note runs and a bass staff with a similar pattern. Measure 130 continues the eighth-note runs in both staves.

131

Measures 131-132: Treble and bass staves. Measure 131 features a treble staff with eighth-note runs and a bass staff with a similar pattern. Measure 132 shows a change in the treble staff with a dotted quarter note and eighth-note pattern, while the bass staff continues with eighth notes. A first ending bracket is present over measures 131 and 132, with a second ending bracket over measure 132.

133 Var. 9

Measures 133-134: Treble and bass staves. Measure 133 features a treble staff with eighth-note runs and a bass staff with a similar pattern. Measure 134 continues the eighth-note runs in both staves.

135

Measures 135-136: Treble and bass staves. Measure 135 features a treble staff with eighth-note runs and a bass staff with a similar pattern. Measure 136 continues the eighth-note runs in both staves.

137

Measures 137-138: Treble and bass staves. Measure 137 features a treble staff with eighth-note runs and a bass staff with a similar pattern. Measure 138 continues the eighth-note runs in both staves.

Measures 139-141 of a musical score. The key signature has one sharp (F#). Measure 139 features a continuous eighth-note pattern in both hands. Measure 140 continues this pattern. Measure 141 shows a change in the right hand's pattern, while the left hand continues with eighth notes.

Measures 142-143 of a musical score. Measure 142 continues the eighth-note patterns. Measure 143 features a more complex rhythmic structure with some rests and eighth notes.

Measures 144-146 of a musical score, including a first and second ending. Measure 144 starts with a first ending bracket. Measure 145 continues the first ending. Measure 146 starts the second ending, which concludes with a repeat sign.

Measures 147-148 of a musical score, labeled "Var. 10". Measure 147 features a melodic line in the right hand with grace notes. Measure 148 continues this variation.

Measures 149-152 of a musical score. Measure 149 features a melodic line in the right hand with grace notes. Measures 150-152 continue this variation with complex rhythmic patterns.

Measures 153-156 of a musical score. Measure 153 features a melodic line in the right hand with grace notes. Measures 154-156 continue this variation with complex rhythmic patterns.