

Tenor Saxophone 1, 2

# A Christmas Serenade

## for Two Tenor Saxophones

Daniel Léo Simpson

**Swing** ♩=154

1st Tenor Saxophone

2nd Tenor Saxophone

*f*

5

God Rest Ye Merry Gentleman

9 **con moto** ♩=144

14

19

Copyright 2011 by Daniel Léo Simpson

[www.danielsimpson.com](http://www.danielsimpson.com)

cum Sancto Spiritu

24

mp

O Little Town of Bethlehem

straight

Meno mosso  $\text{♩}=96$

28

rit. . . . .

p

p

34

40

45

rit. . . . . a tempo  $\text{♩}=104$

mp mf

mp

mp mf

mp

## Joy To The World

Allegro ♩=120

52

rit. *p* *f* *tr*



56



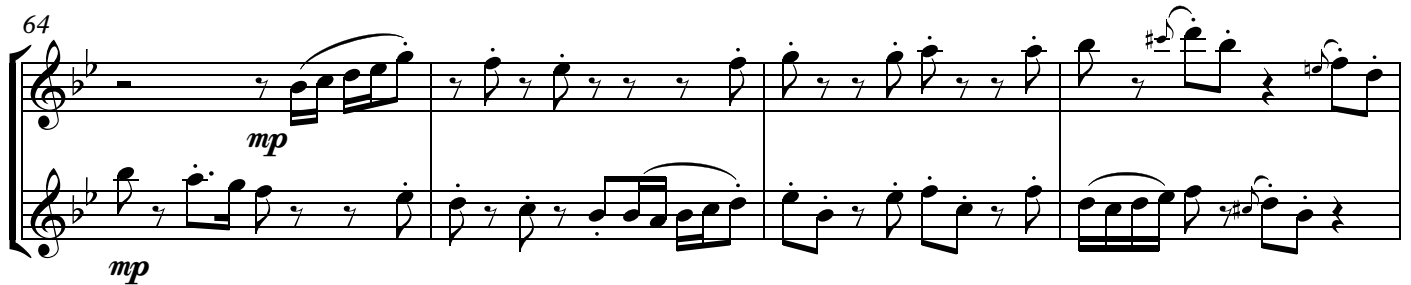
60

*tr*

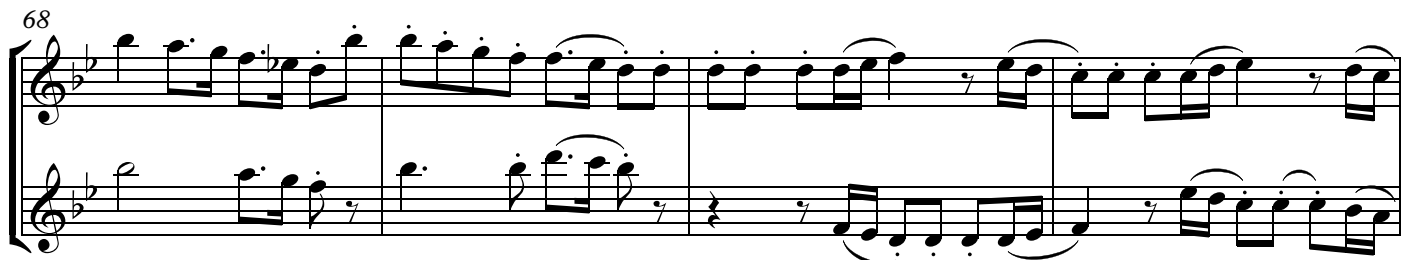


64

*mp*



68



72

76

rit. *tr* meno mosso

It Came Upon A Midnight Clear

Slower ♩=112

81

88

poco rit.

96

a tempo ♩=112

rit.

105 **a tempo** ♩=112 **rit.** . . . . .

*mp* *dim.* *p* *pp*

114 **Silent Night**

*p* *p*

122

129

136 **rit.** . . . . . **O Come All Ye Faithful**  
**con moto** ♩=120

*dim.* *p* *mf* *dim.* *p* *mf*

142

Measures 142-146 of the Tenor Saxophone part. The music is in 4/4 time and B-flat major. Measure 142 starts with a half note B-flat, followed by a quarter rest, then eighth notes D, E, F, G, A, B-flat, and a quarter note G. Measure 143 has a half note B-flat, a quarter note A, and a half note G. Measure 144 has a half note F, a quarter note E, and a half note D. Measure 145 has a half note C, a quarter note B-flat, and a half note A. Measure 146 has a half note G, a quarter note F, and a half note E.

147

Measures 147-150 of the Tenor Saxophone part. Measure 147 has a half note B-flat, a quarter note A, and a half note G. Measure 148 has a half note F, a quarter note E, and a half note D. Measure 149 has a half note C, a quarter note B-flat, and a half note A. Measure 150 has a half note G, a quarter note F, and a half note E.

151

Measures 151-155 of the Tenor Saxophone part. Measure 151 has a half note B-flat, a quarter note A, and a half note G. Measure 152 has a half note F, a quarter note E, and a half note D. Measure 153 has a half note C, a quarter note B-flat, and a half note A. Measure 154 has a half note G, a quarter note F, and a half note E. Measure 155 has a half note D, a quarter note C, and a half note B-flat.

156

Measures 156-159 of the Tenor Saxophone part. Measure 156 has a half note B-flat, a quarter note A, and a half note G. Measure 157 has a half note F, a quarter note E, and a half note D. Measure 158 has a half note C, a quarter note B-flat, and a half note A. Measure 159 has a half note G, a quarter note F, and a half note E.

160

Measures 160-163 of the Tenor Saxophone part. Measure 160 has a half note B-flat, a quarter note A, and a half note G. Measure 161 has a half note F, a quarter note E, and a half note D. Measure 162 has a half note C, a quarter note B-flat, and a half note A. Measure 163 has a half note G, a quarter note F, and a half note E.

164

167 Angels We Have Heard On High

171

175

180



2nd Tenor Saxophone

# A Christmas Serenade

for Two Tenor Saxophones

Daniel Léo Simpson

**Swing** ♩=154

*f*

5

9 **con moto** ♩=144

13

17

22

26 *mp* **rit.**

31 **Meno mosso** ♩=96  
**straight**  
*p*

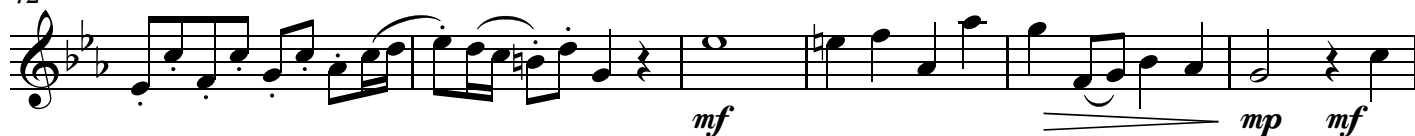
37

V.S.

2

## 2nd Tenor Saxophone

42



48

rit. . . . .

a tempo ♩=104

rit. . . . .



54

Allegro ♩=120



58



62



67



71



75

rit. . . . .



79

meno mosso

Slower ♩=112



86



## 2nd Tenor Saxophone

3

95 poco rit.. a tempo ♩=112

rit. . .



104 a tempo ♩=112

rit. . . .



113



122



129



134



140 con moto ♩=120



145



150



154



V.S.

159



163



167



172



177



182



188



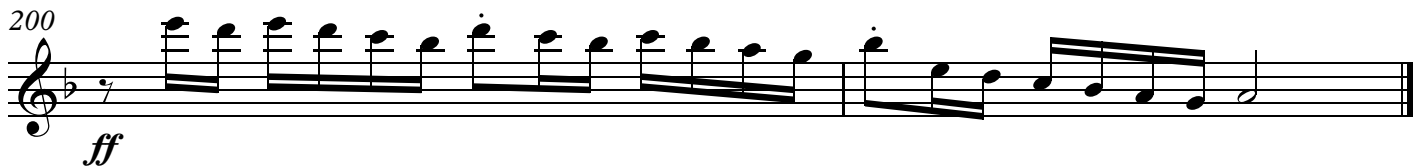
193



197



200

*ff*

1st Tenor Saxophone

# A Christmas Serenade

for Two Tenor Saxophones

Daniel Léo Simpson

Swing ♩=154

5

*f*

3

3

God Rest Ye Merry Gentleman

9 *con moto* ♩=144

15

21

27

*mp*

*rit.*

*p*

O Little Town of Bethlehem

Meno mosso ♩=96

straight

32

38

44

*mp*

*mf*

*rit.*

*mf*

V.S.

50 **a tempo** ♩=104 **rit.**

Joy To The World *mp* *p*

54 **Allegro** ♩=120

58 *f*

62 *tr* *mp*

67

71

75 **rit.** *tr*

It Came Upon A Midnight Clear

79 **meno mosso** **Slower** ♩=112

*mp* *p* *mp*

87 **poco rit..**

96 **a tempo** ♩=112 **rit.**

*mf*

## 1st Tenor Saxophone

3

104 - - - - - **a tempo** ♩=112 **rit.** - - - - -

*mp* *dim.*

110 - - - - -

*p* *pp*

117 **Silent Night**

*p*

125

132 **rit.** - - - - -

*dim.*

O Come All Ye Faithful

140 **con moto** ♩=120

*p* *mf*

146

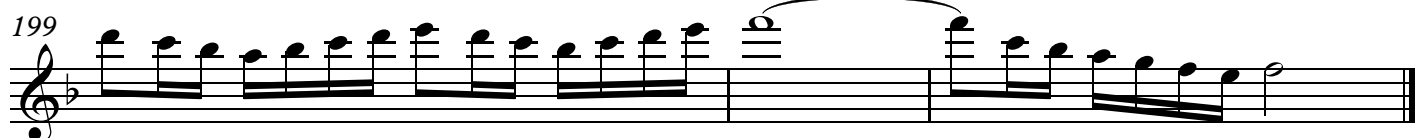
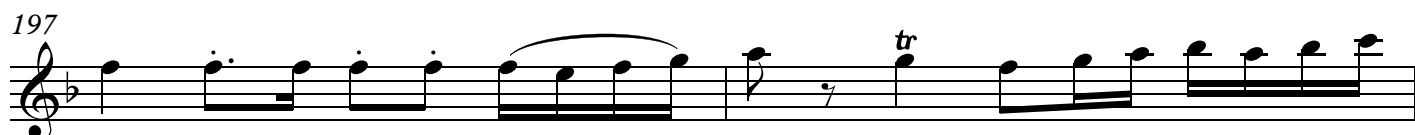
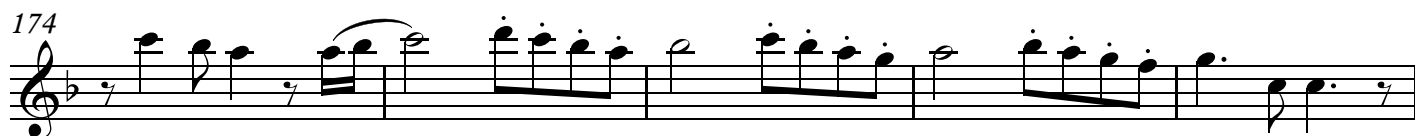
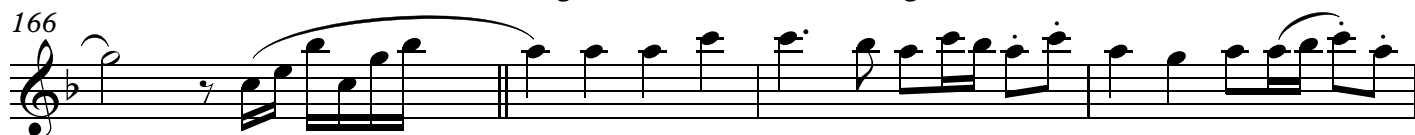
151

156

161

V.S.

1st Tenor Saxophone  
Angels We Have Heard On High



*ff*