

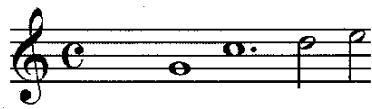
Assumpta est

In Assumptione B. M. Virginis

Juan Bautista Comes

1582 ? - 1643

Trans: José Climent



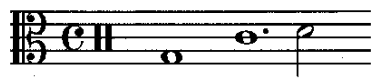
Cantus I



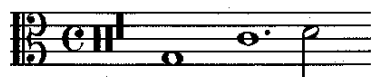
Cantus II



Altus



Tenor I



Tenor II



Bassus

Musical notation for the first system of the vocal ensemble. It includes staves for Cantus I, Cantus II, Altus, Tenor I, Tenor II, and Bassus. The key signature is C major (one sharp, F#), and the time signature is common time. The lyrics "As - sum - - - pta" are written under the Cantus I staff. The notes are: Cantus I (G4), Cantus II (G4), Altus (G3), Tenor I (G3), Tenor II (G3), and Bassus (G2).

Musical notation for the second system of the vocal ensemble. It includes staves for Cantus I, Cantus II, Altus, Tenor I, Tenor II, and Bassus. The key signature is C major (one sharp, F#), and the time signature is common time. The lyrics are: Cantus I (est Ma - ri - - - a in coe -), Cantus II (As - sum - - - pta est Ma - ri - - a in coe -), Altus (Ma - - - ri a in coe - lum, Ma - ri -), Tenor I (As - sum - - - pta), Tenor II, and Bassus. The notes are: Cantus I (G4), Cantus II (G4), Altus (G3), Tenor I (G3), Tenor II (G3), and Bassus (G2).

Assumpta est-2

C I
 C II
 A I
 T I
 T II
 B

lum, in coe - lum, as -
 lum, in coe - lum, in
 a in coe - lum, Ma - ri - a
 est Ma - ri - a in coe -
 As - sum - pta est Ma - ri -
 Ma - ri - a in coe -

C I
 C II
 A I
 T I
 T II
 B

sum - pta est Ma - ri - a in
 coe - lum, as - sum - pta
 in coe - lum, Ma - ri -
 lum, in coe -
 a, Ma - ri - a in coe - lum,
 lum, as - sum - pta est Ma - ri - a in coe -

Assumpta est-3

CI
coe - - - - - lum, as - sum - pta

CII
est Ma - ri - - - a in coe - - - - -

Al
- a in coe - - - lum, Ma - - - ri - a in

TI
lum, in coe - lum, as -

TII
as - - - sum - - - pta est Ma - ri -

B
lum,

CI
est Ma - ri - a in coe - - - - -

CII
lum, in coe - - - - -

Al
coe - lum, as - sum - - - pta

TI
sum - pta est Ma - ri - a

TII
a in coe - - - lum, in coe - - - lum

B
as sum - - - pta est Ma - ri - a, Ma - - - ri -

Assumpta est-4

CI
CII
Al
TI
TII
B

lum, in coe - lum, as - sum - pta est Ma - ri - a in coe - lum, coe - lum, as - sum - pta est

CI
CII
Al
TI
TII
B

lum, Ma - ri - a in as - sum - pta est Ma - ri - a in coe - lum, as - sum - pta Ma - ri - a in cae - lum,

Assumpta est-5

CI
CII
AI
TI
TII
B

coe - lum, as -

a in coe - - - - - lum,

lum, in coe - - - - -

lum, as - sum - - - - pta est Ma - - - - ri - - - - a

est Ma - ri - - - - a in coe - - - - -

as - - - - sum - - - - pta est Ma - ri - -

CI
CII
AI
TI
TII
B

sum - - - - pta est Ma - - - - - ri - a in

as - sum - pta est in coe - - - - -

lum, in coe - - - - -

in coe - lum, - - - - -

lum, as - sum - - - - pta est Ma -

a in coe - lum,

Assumpta est-6

CI
CII
AI
TI
TII
B

coe - - - lum, in coe - - - lum

lum, in coe - - - lum, in coe -

lum, in coe - - -

in coe - lum,

ri - - a in

in coe - - -

CI
CII
AI
TI
TII
B

in coe - - - lum, in

lum, in coe - - -

lum, in coe -

in coe - - -

coe lum, in coe -

lum, in cae - - -

CI
C II
Al
TI
T II
B

coe - - - lum: - - - gau -
- - - lum: - - - gau - dent An -
- - - lum: - - - gau - dent An - ge - li
lum, in coe - lum: - - - gau - dent An -
- - - lum: - - - gau -
- - - lum: - - - gau -

CI
C II
Al
TI
T II
B

dent An - - - ge - li, An - ge - li, gau - dent An -
- - - ge - li, - - - gau - dent An - ge - li, An -
- - - gau - dent An -
- - - ge - li, An - - - ge - li, An - - - ge -
dent An - - - ge - li, gau - dent An -
dent An - - - ge - li, gau - dent

Assumpta est-8

CI ge - li gau - dent An -

CII ge - li, gau - dent An - ge - li,

AI ge - li, gau -

TI li, gau - dent An - ge - li, An -

TII ge - li, gau - dent An -

B An - ge - li gau -

CI ge - li, An - ge - li, gau - dent An -

CII gau - dent An - ge - li, gau - dent An -

AI dent An - ge - li, An - ge - li, gau -

TI ge - li, gau - dent An -

TII ge - li, gau - dent An - ge - li,

B dent An - ge - li, gau - dent

Assumpta est-9

CI
CII
Al
TI
TII
B

ge - li, lau - dan -

ge - li, lau - dan -

dent An - ge - li, lau - dan -

ge - li, gau - dent An - ge - li,

gau - dent An - ge - li, lau - dan -

An - ge - li,

CI
CII
Al
TI
TII
B

tes be - ne di cunt

tes be - ne di - cunt, be - ne di - cunt

tes, be - ne di - cunt

tes be - ne di - cunt Do -

CI Do - - - mi - num,

CII Do - - - mi - num, lau - dan - -

AI Do - - - mi - num,

TI 8 lau - dan - - - tes,

TII 8 - - - mi - num, be -

B lau - dam -

CI lau - dan - - tes be - - - ne

CII tes, lau - dan - - tes be -

AI lau - dan - - - -

TI 8 lau - dan - - tes be - ne - di -

TII 8 - - ne di - cunt Do - mi - num,

B tes, be - - - ne -

CI di cunt Do - - - mi - num,

CII - - ne - di - cunt Do - mi - num, lau - dan - - -

Al - - - tes, lau - dan - - -

TI cunt Do - - - mi - num,

TII - - - lau - dan - - - tes,

B di - cunt Do - - - mi - num, lau - dan - - -

CI lau - dan - - - tes be - ne -

CII - - - tes, lau - dan - - - tes,

Al - - - tes lau - dan - - - tes, lau -

TI - - - lau - dan -

TII - - - lau - dan - - - tes, lau - dan -

B - - - tes be - ne - di - - - cunt, be - - - ne - di - cunt

CI di - cunt Do - mi - num, lau - dan - - tes be -

CII lau - dan - - - - tes be - ne - di - cunt,

AI dan - tes, lau - dan - - - -

TI 8 - - - - tes be - ne - di - cunt Do - mi -

TII 8 tes lau - dan - - - - tes, lau -

B Do - mi - num be - ne - di - - - - cunt Do - mi -

CI ne - di - cunt, be - ne di - cunt Do - - - mi - num.

CII be - ne - - - - di - - - - cunt Do - mi - num.

AI tes be - ne - di - cunt Do - - - mi - num.

TI 8 num, Do - - - - - mi - num.

TII 8 dan - tes be - ne - di - cunt Do - mi - num.

B num, be - ne - di - cunt Do - - - mi - num.

(1) En el original es "si". Debe ser errata.

(2) En el original tiene la mitad del valor. Debe ser errata.