

# Klavier Konzert N2

**Stephan Elmas**

## Allegro appassionato

Piano

**Allegro appassionato**

Piano

9

14

19

22

28

31

*dim e rall.*

*a tempo*

**A**

34

38

42

46

**B**

50

54

58

62

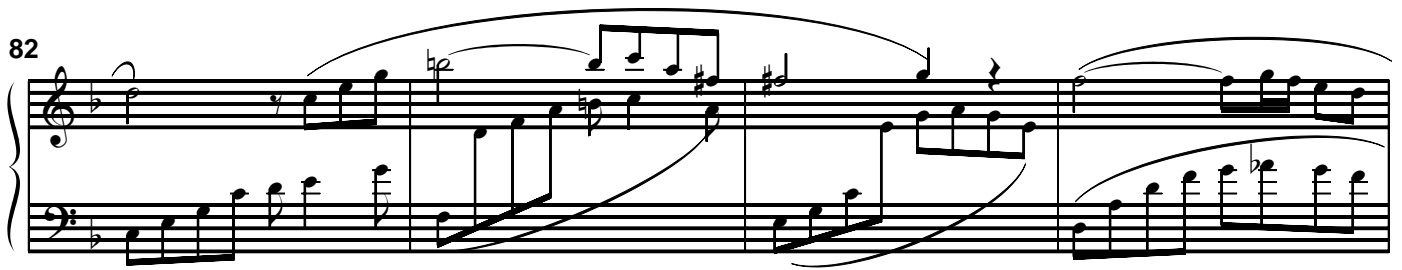
66

70

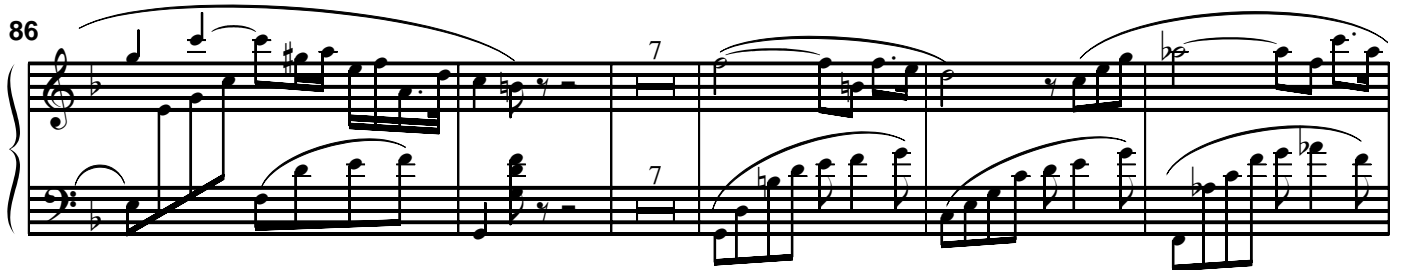
74

78

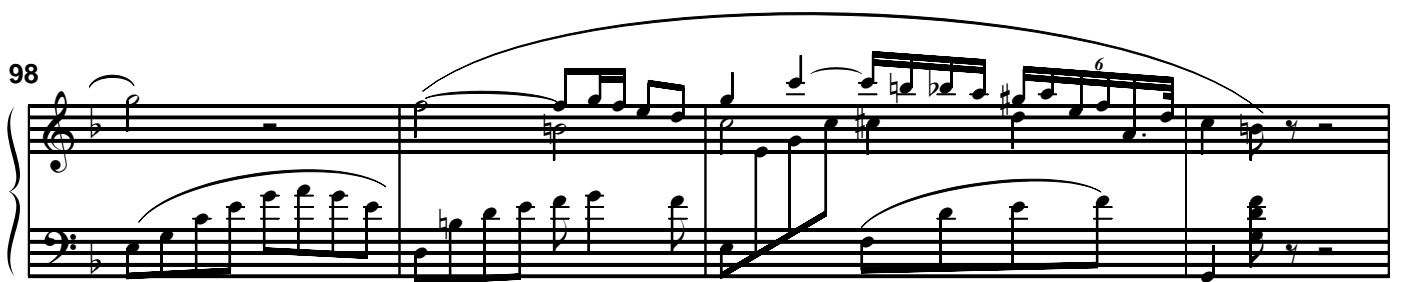
82



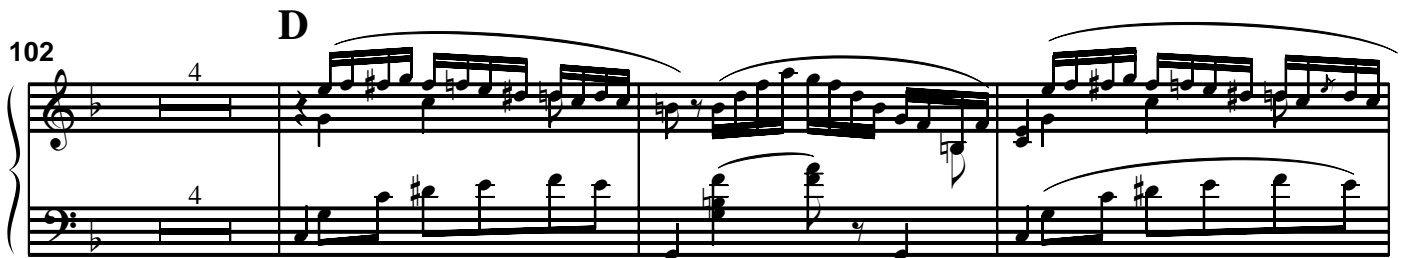
86



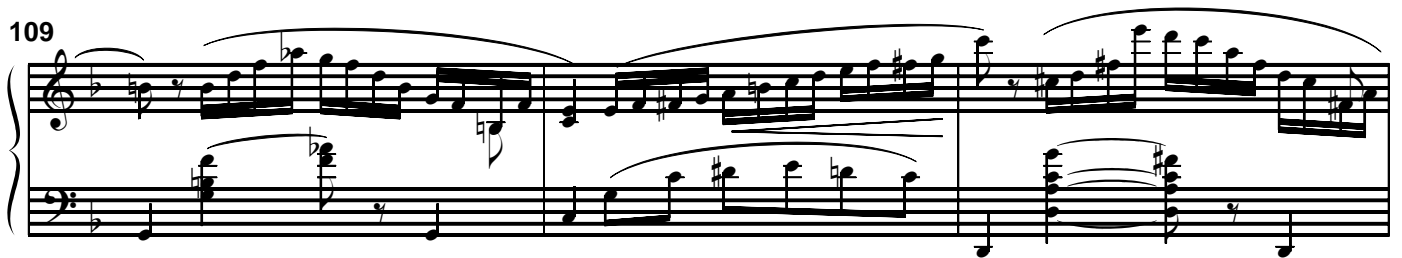
98

**D**

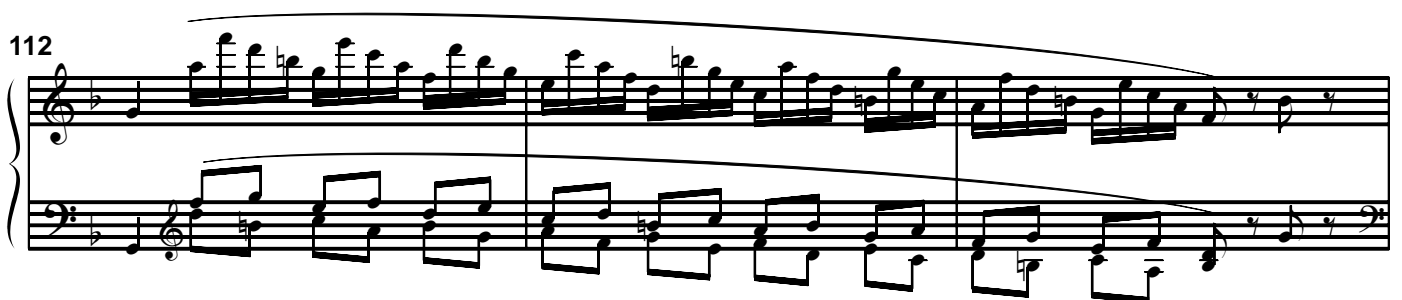
102



109



112



115

118

121

E <sup>8va</sup>

(8va)

124

127

*f*

130

**F**

*p*

133

8va ---

*cresc.*

*f*

136

(8va) ---

*p*

139

*cresc.*

142

8va ---

145

*f*

147

*ff*

149

152

155

156

158

196

200

203

206

212

216

220



224 **I** *poco sostenuto*

*dim e rall.* *cantabile*

228

232

21

235

3

239

9

242 **J** *8va*

245

248

251

254

257

260

263

8va

266

(8va)

K

269

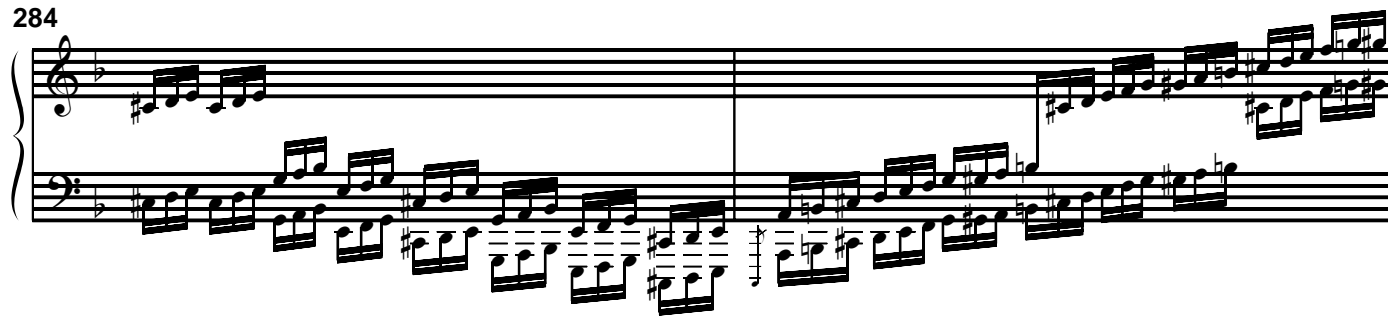
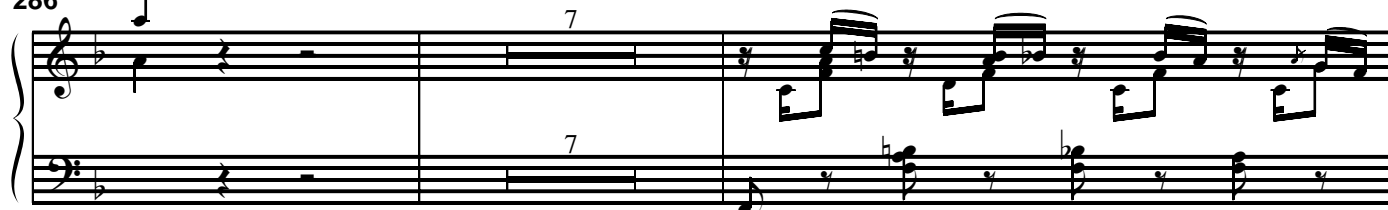
273

276

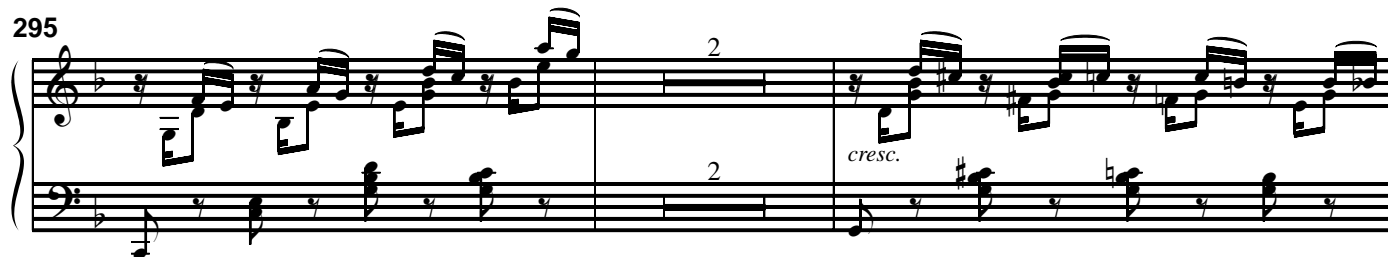
279

*f*

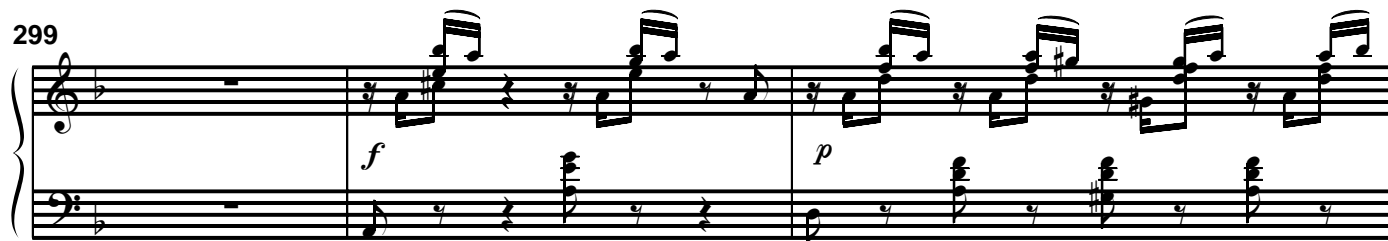
284

286 **L**

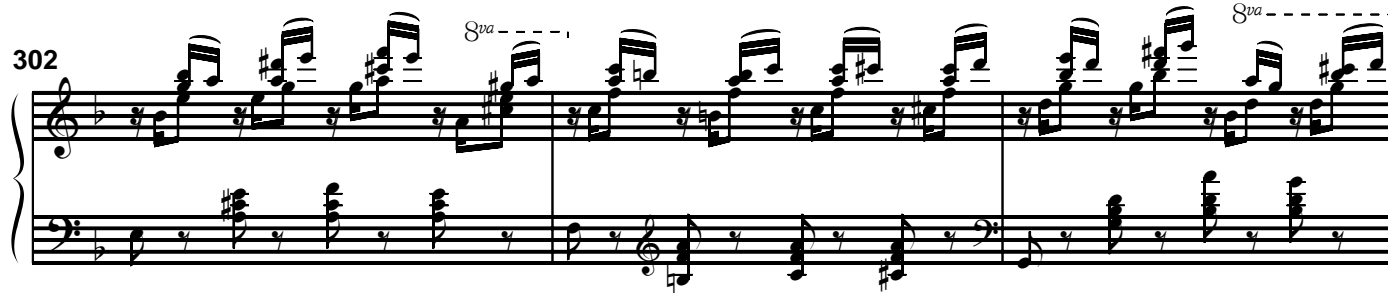
295



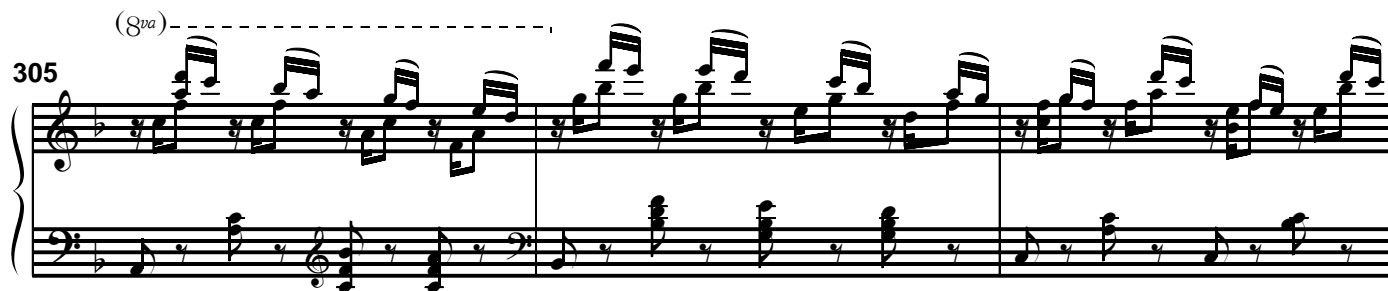
299



302



305



308 *8va*

311

314 *M*

317

321

332

340 *N*

343

346 *Sua*

349

352

355 *Sua* *O*

(8va)-----

358

361

364

367

(8va)-----

370

**P**

373

(8va)-----

376

379

382

385

387

(8va)-----

389



390

8va

Q

con forza

8va

392

395

398

401

404

407

410

413

416

419

422

Andante

1 II

5

10

14 A

25

30

7

7

*p*

8va

20

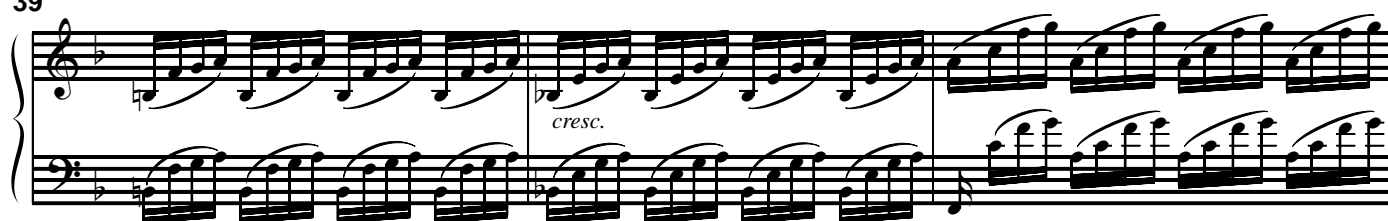
33 B



36



39



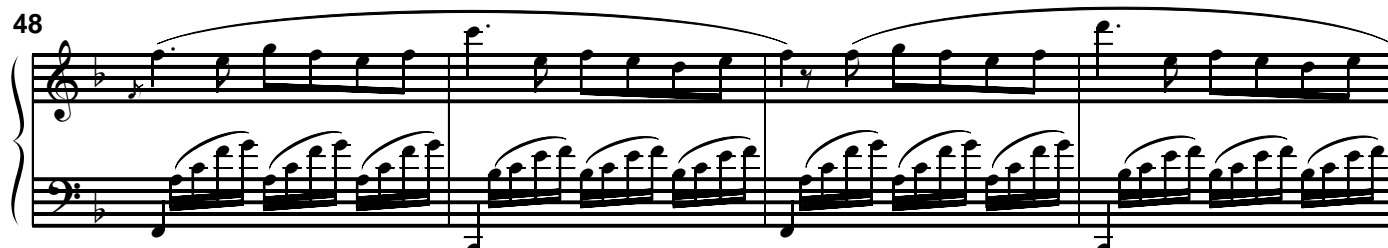
42



45



48



52

Measures 52-55: Treble clef contains a melodic line with a long slur. Bass clef contains a rhythmic accompaniment with eighth notes and a final half note.

56

C

Measures 56-60: Treble clef contains a series of chords and a final melodic phrase. Bass clef contains a complex accompaniment with many beamed eighth notes.

61

Measures 61-65: Treble clef features a triplet of eighth notes in measure 61. Bass clef continues the complex accompaniment with eighth notes.

68

Measures 68-70: Treble clef contains a melodic line with slurs. Bass clef continues the complex accompaniment with eighth notes.

71

Measures 71-73: Treble clef contains chords and a final half note. Bass clef continues the complex accompaniment with eighth notes.

74

Measures 74-76: Treble clef contains a melodic line with a trill (tr) in measure 75. Bass clef continues the complex accompaniment with eighth notes.

78 **D**

80

82

84

86

88

90 **E**

Measures 90-92. The music is in E major. The right hand features a melodic line with slurs and ties, while the left hand provides a harmonic accompaniment with chords and moving lines.

93

Measures 93-95. The music continues in E major. Measure 93 includes a triplet of eighth notes in both hands. The right hand has a melodic line with slurs, and the left hand has a more active accompaniment.

101

Measures 101-105. The key changes to F major. Measure 101 includes an 8-measure rest in both hands. The right hand has a melodic line with slurs, and the left hand has a more active accompaniment.

113

Measures 113-117. The music continues in F major. The right hand has a melodic line with slurs, and the left hand has a more active accompaniment.

118

Measures 118-120. The music continues in F major. Measure 118 includes an 8-measure rest in both hands. The right hand has a melodic line with slurs, and the left hand has a more active accompaniment.

121

Measures 121-125. The key changes to G major. Measure 121 includes an 8-measure rest in both hands. The right hand has a melodic line with slurs, and the left hand has a more active accompaniment.

125



129



133



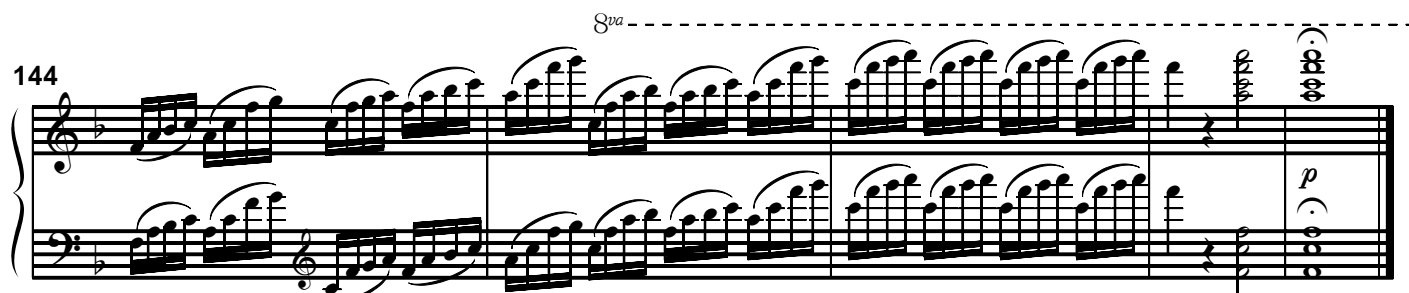
137



141



144





III

1 Allegro

8

*f*

8

14

21

*Sva*

14

*f*

14

39 A

*Sva*

46

*scherzando*

53

*Sva*

59

Measures 59-70. The system begins with a treble clef and a key signature of one flat. Measure 59 contains a whole note chord in the right hand and a whole note chord in the left hand. Measures 60-70 feature a complex melodic line in the right hand with many beamed sixteenth notes and a steady accompaniment in the left hand. A finger number '6' is written above the first measure of the system.

71

Measures 71-77. The system continues with the same key signature. Measure 71 starts with a treble clef. The right hand has a melodic line with some accidentals, while the left hand provides a harmonic accompaniment. A section marker 'B' is placed above the final measure of this system.

78

Measures 78-82. The system continues with the same key signature. The right hand features a more active melodic line with many beamed sixteenth notes, while the left hand continues with a steady accompaniment.

83

Measures 83-87. The system continues with the same key signature. The right hand has a melodic line with many beamed sixteenth notes, and the left hand provides a harmonic accompaniment.

88

Measures 88-92. The system continues with the same key signature. The right hand features a more active melodic line with many beamed sixteenth notes, while the left hand continues with a steady accompaniment.

93

Measures 93-97. The system continues with the same key signature. The right hand has a melodic line with many beamed sixteenth notes, and the left hand provides a harmonic accompaniment.

98

103

108

113

118

123

128

Measures 128-132. The right hand features a melodic line with a long slur over measures 128-132. The left hand has a steady eighth-note accompaniment. A crescendo hairpin is visible in measure 131.

133

Measures 133-137. The right hand continues the melodic line with a slur. The left hand continues the eighth-note accompaniment.

138

Measures 138-142. The right hand continues the melodic line with a slur. The left hand continues the eighth-note accompaniment. A "cresc." marking is present in measure 140.

143

Measures 143-147. The right hand continues the melodic line with a slur. The left hand continues the eighth-note accompaniment.

148

Measures 148-152. The right hand continues the melodic line with a slur. The left hand continues the eighth-note accompaniment.

153

Measures 153-157. The right hand continues the melodic line with a slur. The left hand continues the eighth-note accompaniment.

158

163

8va

**D**

*p*

(8va)

169

175

181

*sostenuto*

186

189 *8va* -----  
*cresc.*

193 *(8va)* -----

197 *(8va)* -----  
**E** *Tempo I*  
*p*

203 *(8va)* -----

208

213 *sostenuto*

218

221

225

230

Tempo I

*p*

234

**F**

239

244

8va

249

cresc.

254

259

264

269



274 **G**

281 **H**

296

302

308 **I**

328 *scherzando*

335

340

(8va)

**J**

3

3

*p*

347

352

8va - - - -

357

(8va)

362

8va

8va

8va

8va

(8va)-----

367 K

373

377 8va--

(8va)-----

381

385

8va-----

389

393

397

402

406

410

416

421 **M**

*p*

425

*p*

(8va) -

429

*cresc.*

*f*

(8va) -

433

437

441

*f*